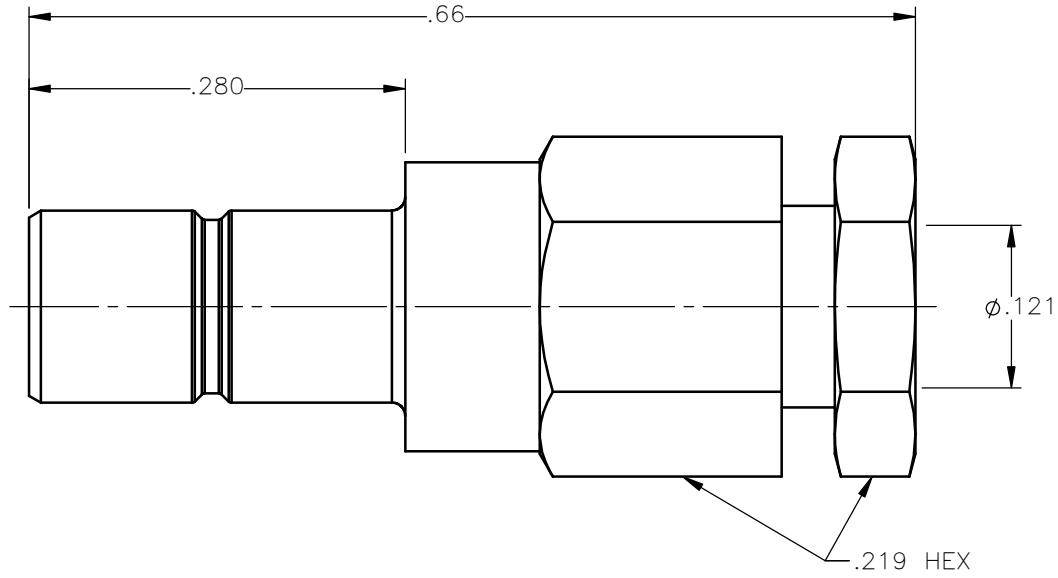


REVISIONS			
REV.	DESCRIPTION	DATE	APPROVED
A	REDRAWN ON NEW FORMAT	12/8/2014	D.N.





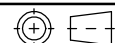
NOTES:

MATERIALS:

1. INSULATORS = VIRGIN WHITE TEFLON PER ASTM D1710, GRADE 1, TYPE I, CLASS "B".
2. ALL OTHER METAL PARTS = BRASS PER ASTM B16, ALLOY C36000, TEMPER H02.

FINISHES:

1. CONTACT = GOLD PLATE PER ASTM B488-01, TYPE II, 50 μ in MIN, GRADE C, OVER 100 TO 200 μ in STRESS FREE SULFAMATE NICKEL PER QQ-N-290.
2. ALL OTHER METAL PARTS = GOLD PLATE PER ASTM B488-01, TYPE II, 30 μ in MIN, GRADE C OVER 100 TO 200 μ in COPPER STRIKE PER MIL-C-14550.

UNLESS OTHERWISE SPECIFIED DIMENSIONS ARE IN INCHES TOLERANCES ON	DWN:	DATE	 Property of Radiall This document cannot be reproduced or communicated to a third party without prior written permission of RADIALL.	
	D.N.	12/08/14		
DECIMAL	ANGLE	CHKD:	DATE	SMB STRAIGHT MALE JACK CLAMP TYPE FOR RG-316 & SIMILAR CABLES
		N.D.	12/08/14	
		APVD:	DATE	
		J.M.	12/08/14	SIZE A FSCM NO. 19505 DWG NO. 2001-1551-003 REV A
REFERENCE:	MATERIALS & FINISHES:	SCALE 7:1		THIRD ANGLE PROJECTION 
ORIGINATED: D.N. DATE: 12/08/14	SEE NOTES	SHEET 1 OF 1		

2001-1551-003