

CONNECTOR WITH PEG

CONNECTOR WITHOUT PEG

CKT SIZE	DIMENSION		
	A	B	C
04	5.08	2.54	-
06	7.62	5.08	-
08	10.16	7.62	5.08
10	12.70	10.16	7.62
12	15.24	12.70	10.16
14	17.78	15.24	12.70
16	20.32	17.78	15.24
18	22.86	20.32	17.78
20	25.40	22.86	20.32
22	27.94	25.40	22.86
24	30.48	27.94	25.40
26	33.02	30.48	27.94
28	35.56	33.02	30.48
30	38.10	35.56	33.02
32	40.64	38.10	35.56
34	43.18	40.64	38.10
36	45.72	43.18	40.64
38	48.26	45.72	43.18
40	50.80	48.26	45.72

SYMBOLS	THIS DRAWING CONTAINS INFORMATION THAT IS PROPRIETARY TO MOLEX ELECTRONIC TECHNOLOGIES, LLC AND SHOULD NOT BE USED WITHOUT WRITTEN PERMISSION		CURRENT REV DESC: 87939-0805 ADD	
	DIMENSION UNITS	SCALE		
▽ = 0	mm	NTS		
▽ = 0	GENERAL TOLERANCES (UNLESS SPECIFIED)			
▽ = 0		MM	INCH	
▽ = 0	4 PLACES	±	±	
▽ = 0	3 PLACES	±	±	
▽ = 0	2 PLACES	± 0.2	±	
▽ = 0	1 PLACE	±	±	
▽ = 0	0 PLACES	±	±	
■ = 0	ANGULAR TOL ± 3.0°			
▽ = 0	DRAFT WHERE APPLICABLE MUST REMAIN WITHIN DIMENSIONS		THIRD ANGLE PROJECTION	DRAWING SERIES
			DRWN: SKLIM01 2006/06/29	2006/07/07
			APPR: PATEY	
DOCUMENT STATUS		P1	RELEASE DATE	2019/06/18 18:31:47

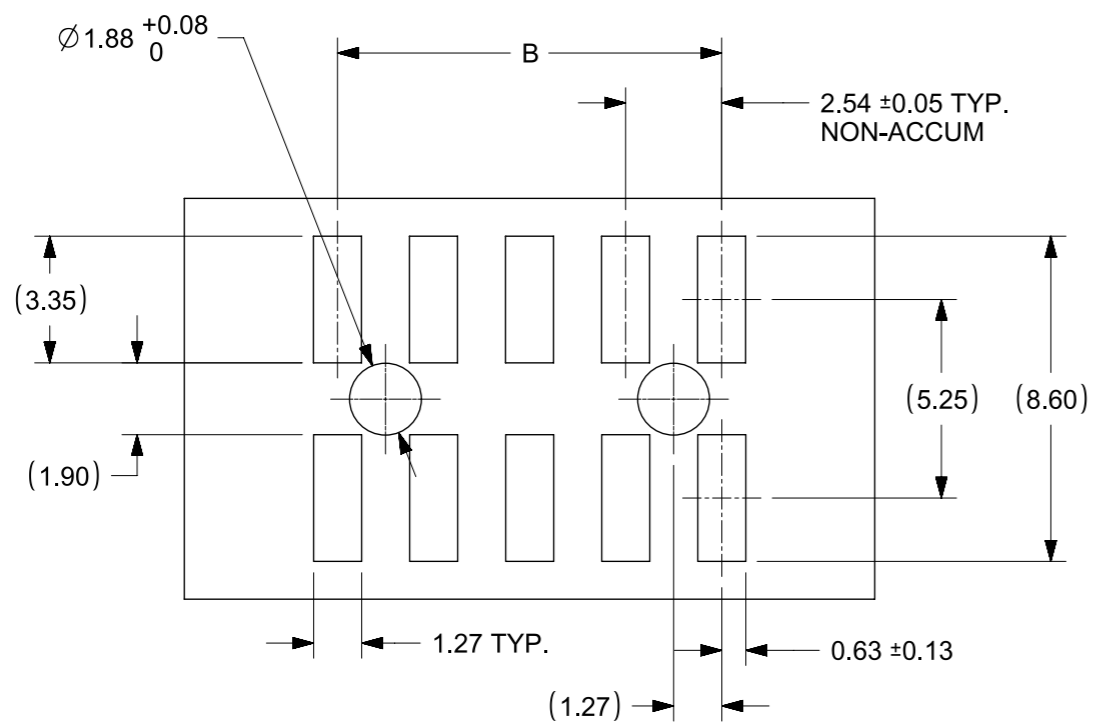
molex

CUSTOM HEADER
CGRID, DUAL ROW HDR, DUAL BODY, SMT W/PEGS, VERT.

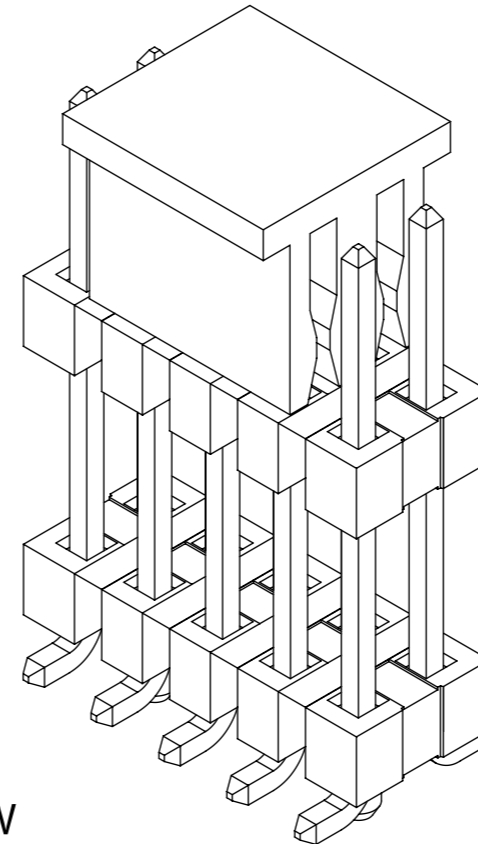
PRODUCT CUSTOMER DRAWING

DOCUMENT NUMBER: SD-87939-017 DOC TYPE: PSD DOC PART: 000 REVISION: A12

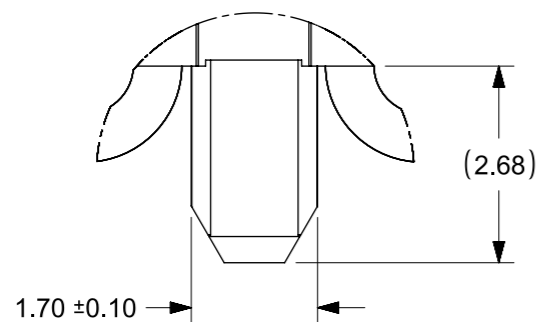
MATERIAL NUMBER: SEE TABLE CUSTOMER: GENERAL MARKET SHEET NUMBER: 1 OF 4



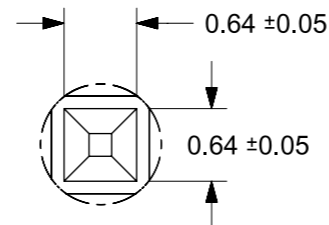
RECOMMENDED PCB LAYOUT: SOLDER SIDE



ISO VIEW
CONNECTOR WITH CAP



DETAIL1



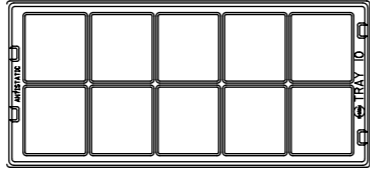
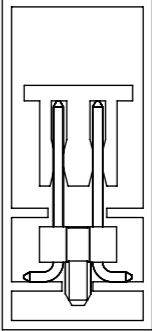
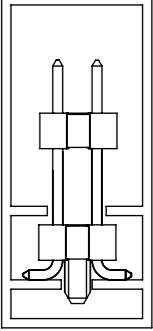
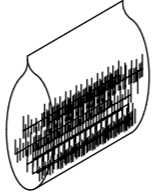
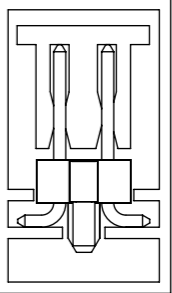
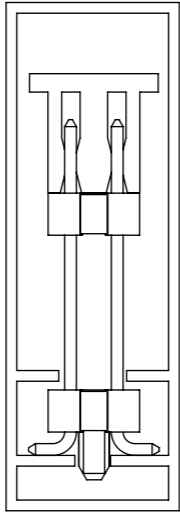
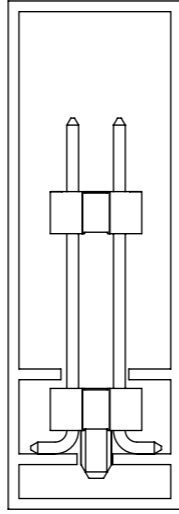
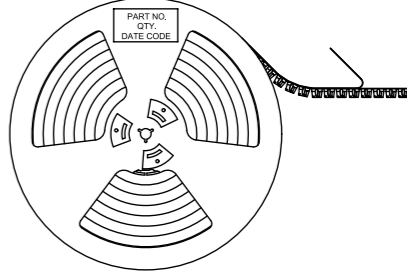
DETAIL2

NOTES

1. MATERIAL:
 - HSG: LCP, GLASS-FILLED, UL94V-0, COLOR: BLACK
 - CAP: NYLON, GLASS-FILLED, UL94V-0, COLOR: BLACK
 - PIN: 0.64MM SQ, COPPER ALLOY
2. PLATING TYPE:
 - (1) GOLD FLASH OVER
1.25μm MIN. NICKEL OVERALL
 - (2) 0.05μm MIN. GOLD PLATE ON CONTACT AND
2.50μm MIN. TIN ON SOLDER TAIL OVER
1.25μm MIN. NICKEL OVERALL.
 - (3) 0.38μm MIN. GOLD PLATE ON CONTACT AND
2.00μm MIN. TIN ON SOLDER TAIL OVER
1.25μm MIN. NICKEL OVERALL.
 - (4) 0.75μm MIN. GOLD PLATE ON CONTACT AND
2.00μm MIN. TIN ON SOLDER TAIL OVER
1.25μm MIN. NICKEL OVERALL.
 - (5) 2.50μm MIN. TIN OVERALL
1.25μm MIN. NICKEL OVERALL
3. PACKAGING TYPE: SEE TABLE
4. PCB THICKNESS 1.60+/-0.10mm
5. PRODUCT SPECIFICATION: PS-87920-019
6. WAFER TO BE FLAT WITHIN 0.003 mm/mm
7. BEND DEPRESSION IS ACCEPTED SO LONG AS IT DOES NOT AFFECT THE OVERALL COPLANARITY OF TAIL
8. COPLANARITY IS TO BE MEASURED BY RESTING THE SOLDER TAIL ON A FLAT SURFACE
9. CAP LOCATION IS CENTERED ALONG THE MATING ENDS AS SHOWN. TOP SURFACE OF CAP TO BE FLAT FOR THE PURPOSE OF PICK & PLACE BY VACUUM SUCTION NOZZLE
10. IRREGULAR CIRCUIT CUTOFF WITHIN BREAKAWAY SECTION IS PERMISSIBLE. CUTTING OR CHIPPING OF THE MAIN BODY IS NOT ACCEPTABLE
11. PARTS ARE NOT STACKABLE ON 2.54 CENTER
12. THE ABOVE CKT 10 IS FOR ILLUSTRATION PURPOSE ONLY
13. TUBE LENGTH IS 560MM PER STANDARD
14. PACKAGING SPECIFICATION: PLS REFER TO SHEET 3

SYMBOLS	THIS DRAWING CONTAINS INFORMATION THAT IS PROPRIETARY TO MOLEX ELECTRONIC TECHNOLOGIES, LLC AND SHOULD NOT BE USED WITHOUT WRITTEN PERMISSION		CURRENT REV DESC: 87939-0805 ADD		molex
	DIMENSION UNITS	SCALE			
▽ = 0	mm	NTS			CUSTOM HEADER CGRID, DUAL ROW HDR, DUAL BODY, SMT W/PEGS, VERT.
▽ = 0	GENERAL TOLERANCES (UNLESS SPECIFIED)				
▽ = 0		MM	INCH		
▽ = 0	4 PLACES ±			EC NO: 619230	PRODUCT CUSTOMER DRAWING
▽ = 0	3 PLACES ±			DRWN: GJEEVANSURES 2019/06/18	
▽ = 0	2 PLACES ±	0.2		CHK'D: GJEEVANSURES 2019/06/18	
▽ = 0	1 PLACE ±			APPR: ISHWARG 2019/06/18	DOCUMENT NUMBER SD-87939-017 DOC TYPE DOC PART REVISION PSD 000 A12
▽ = 0	0 PLACES ±			INITIAL REVISION: DRWN: SKLIM01 2006/06/29 APPR: PATEY 2006/07/07	
▽ = 0	ANGULAR TOL ±	3.0°			MATERIAL NUMBER SEE TABLE CUSTOMER GENERAL MARKET SHEET NUMBER 2 OF 4
▽ = 0	DRAFT WHERE APPLICABLE MUST REMAIN WITHIN DIMENSIONS		THIRD ANGLE PROJECTION	DRAWING A3-SIZE	
▽ = 0			SERIES 87939		

PACKAGING SPECIFICATION OVERVIEW

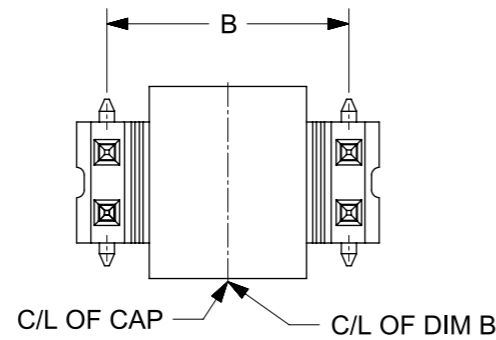
ITEM	PACKAGING TYPE	PACKAGING SPECIFICATION	RECOMMENDED LOADED ASSY HEIGHT	PART PACKED IN PACKAGING ORIENTATION (FOR REF. USE ONLY)	ITEM	PACKAGING TYPE	PACKAGING SPECIFICATION	RECOMMENDED LOADED ASSY HEIGHT	PART PACKED IN PACKAGING ORIENTATION (FOR REF. USE ONLY)
1	TRAY	PK-89990-489	DIM G/F= 60.0MM MAX.		4	TUBE	PK-89990-507	DIM G/F= <16.0MM	 
2	BULK	PK-89990-491	-		5	TUBE	PK-89990-478	DIM G/F= 10.7MM MAX.	 <p>ONLY PACKED HEADER WITH CAP IN TUBE</p>
3	TUBE	PK-89990-508	DIM G/F= 16.1~23.0MM	  <p>HEADER WITH CAP IN TUBE HEADER WITHOUT CAP IN TUBE</p>	6	TAPE & REEL	PK-89990-486 (REEL Ø: 330.0 MAX.) OR PK-87898-400	DIM G/F= 15.0MM MAX.	

SYMBOLS	THIS DRAWING CONTAINS INFORMATION THAT IS PROPRIETARY TO MOLEX ELECTRONIC TECHNOLOGIES, LLC AND SHOULD NOT BE USED WITHOUT WRITTEN PERMISSION CURRENT REV DESC: 87939-0805 ADD	molex																					
▽ = 0 ▽ = 0 ▽ = 0 ▽ = 0 ▽ = 0 ▽ = 0 ▽ = 0 ▽ = 0 ▽ = 0	DIMENSION UNITS: mm SCALE: NTS GENERAL TOLERANCES (UNLESS SPECIFIED) <table border="1" style="width: 100%; border-collapse: collapse;"> <thead> <tr> <th></th> <th>MM</th> <th>INCH</th> </tr> </thead> <tbody> <tr> <td>4 PLACES</td> <td>±</td> <td>±</td> </tr> <tr> <td>3 PLACES</td> <td>±</td> <td>±</td> </tr> <tr> <td>2 PLACES</td> <td>± 0.2</td> <td>±</td> </tr> <tr> <td>1 PLACE</td> <td>±</td> <td>±</td> </tr> <tr> <td>0 PLACES</td> <td>±</td> <td>±</td> </tr> <tr> <td>ANGULAR TOL</td> <td colspan="2">± 3.0°</td> </tr> </tbody> </table> DRAFT WHERE APPLICABLE MUST REMAIN WITHIN DIMENSIONS		MM	INCH	4 PLACES	±	±	3 PLACES	±	±	2 PLACES	± 0.2	±	1 PLACE	±	±	0 PLACES	±	±	ANGULAR TOL	± 3.0°		CUSTOMER DRAWING DOCUMENT NUMBER: SD-87939-017 DOC TYPE: PSD DOC PART: 000 REVISION: A12 MATERIAL NUMBER: SEE TABLE CUSTOMER: GENERAL MARKET SHEET NUMBER: 3 OF 4
	MM	INCH																					
4 PLACES	±	±																					
3 PLACES	±	±																					
2 PLACES	± 0.2	±																					
1 PLACE	±	±																					
0 PLACES	±	±																					
ANGULAR TOL	± 3.0°																						
	EC NO: 619230 DRWN: GJEEVANSURES 2019/06/18 CHK'D: GJEEVANSURES 2019/06/18 APPR: ISHWARG 2019/06/18 INITIAL REVISION: DRWN: SKLIM01 2006/06/29 APPR: PATEY 2006/07/07	PRODUCT CUSTOMER DRAWING THIRD ANGLE PROJECTION DRAWING: A3-SIZE SERIES: 87939																					

PART NUMBER IN PACKAGING OPTION							CKT SIZE	PEG	PLATE OPT.	PK SPEC.	DIMENSION					
TRAY PACKED WITH CAP	TRAY PACKED WITHOUT CAP	TUBE WITH CAP	TUBE WITHOUT CAP	TAPE & REEL WITH CAP	BULK PACKED WITH CAP	BULK PACKED WITHOUT CAP					G	F	MATING END M	STACKER HEIGHT H	E	J
-	87939-0805	-	-	-	-	-	8	N	5	1	-	20.80	5.10	14.43	1.27	2.22
-	-	-	-	87939-1002	-	-	10	Y	4	6	21.50	20.00	10.00	10.00	1.20	2.33
-	-	-	-	87939-1202	-	-	12	Y	4	6	21.50	20.00	10.00	10.00	1.20	2.33
-	-	-	87939-2000	-	-	-	20	Y	5	3	-	20.00	4.65	15.35	1.27	2.28
-	-	-	-	87939-2402	-	-	24	Y	4	6	21.50	20.00	10.00	10.00	1.20	2.33
-	87939-2802	-	-	-	-	-	28	N	5	1	-	16.89	3.68	13.21	1.27	2.28
-	-	-	87939-0003	-	-	-	40	N	3	4	-	14.40	5.90	8.50	1.27	2.22
-	87939-4001	-	-	-	-	-	40	Y	4	1	-	14.40	8.00	6.40	1.27	2.28

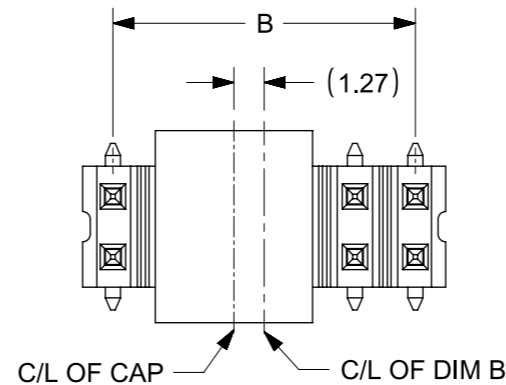
CAP POSITION ILLUSTRATION FOR REFERENCE

FOR ILLUSTRATION 10CKT AS SHOWN



C/L OF DIM B = C/L OF CAP
FOR ODD CKT COLUMN

FOR ILLUSTRATION 12CKT AS SHOWN



C/L OF DIM B IS OFFSET WITH C/L OF CAP
FOR EVEN CKT COLUMN

SYMBOLS	THIS DRAWING CONTAINS INFORMATION THAT IS PROPRIETARY TO MOLEX ELECTRONIC TECHNOLOGIES, LLC AND SHOULD NOT BE USED WITHOUT WRITTEN PERMISSION		CURRENT REV DESC: 87939-0805 ADD		
	DIMENSION UNITS	SCALE			
▽ = 0	mm	NTS			CGRID, DUAL ROW HDR, DUAL BODY, SMT W/PEGS, VERT.
▽ = 0	GENERAL TOLERANCES (UNLESS SPECIFIED)				PRODUCT CUSTOMER DRAWING
▽ = 0		MM	INCH		
▽ = 0	4 PLACES	±			DOCUMENT NUMBER
▽ = 0	3 PLACES	±			
▽ = 0	2 PLACES	±	0.2		DOC TYPE
▽ = 0	1 PLACE	±			DOC PART
▽ = 0	0 PLACES	±			REVISION
▽ = 0	ANGULAR TOL	±	3.0°		
■ = 0	DRAFT WHERE APPLICABLE MUST REMAIN WITHIN DIMENSIONS		THIRD ANGLE PROJECTION	DRAWING	SERIES
▽ = 0				A3-SIZE	87939
DOCUMENT STATUS		P1	RELEASE DATE	2019/06/18 18:31:47	MATERIAL NUMBER
					SEE TABLE
					CUSTOMER
					GENERAL MARKET
					SHEET NUMBER
					4 OF 4