

RECOMMENDED P.C.B. LAYOUT (T=1.6mm/2.0mm/2.4mm)

NOTES:

1. MATERIAL:

HOUSING: THERMAL PLASTIC, UL94V-0, COLOR: SEE SHEET2  
 TERMINAL/PEG: COPPER ALLOY, THICKNESS=0.25MM

2. TERMINAL PLATING:

- CONTACT AREA: (a) GOLD FLASH
- (b) 0.76 MICRON GOLD PLATED
- (c) 0.38 MICRON GOLD PLATED

SOLDER TAIL:

1.27 MICRON MIN. MATTE TIN PLATED

UNDER PLATE:

1.27 MICRON MIN. NICKEL PLATED

3. PEG PLATING:

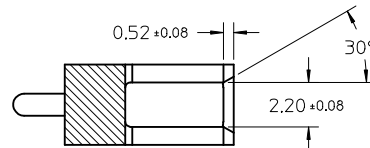
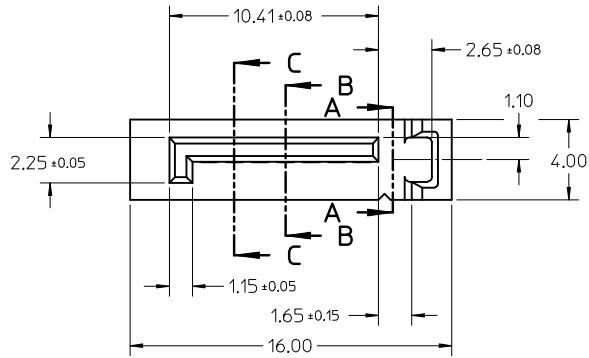
- 1.27 MICRON MIN. MATTE TIN PLATED OVERALL
- 1.27 MICRON MIN. NICKEL UNDER PLATED

4. PACKAGING SPECIFICATION REFER TO PK-67491-001

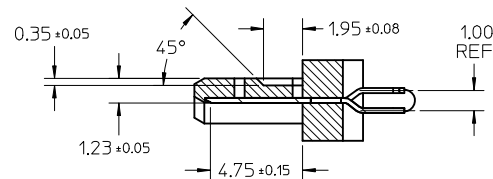
5. PRODUCT SPECIFICATION REFER TO PS-67491-001

6. MATING PART: 67489

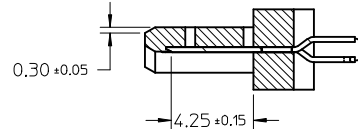
7. RECOMMENDED PROCESS: WAVE SOLDERING



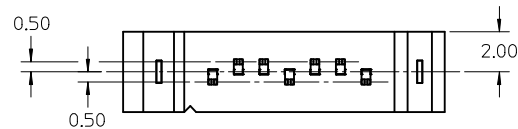
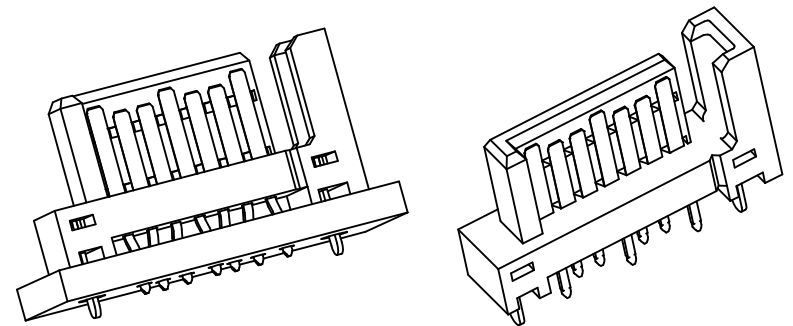
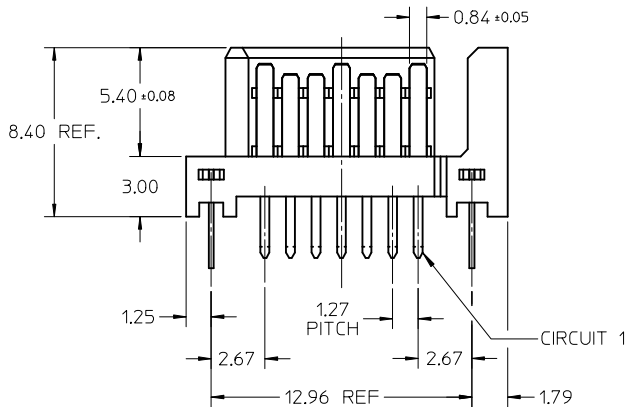
SECTION A-A



SECTION B-B

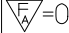
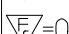
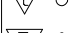


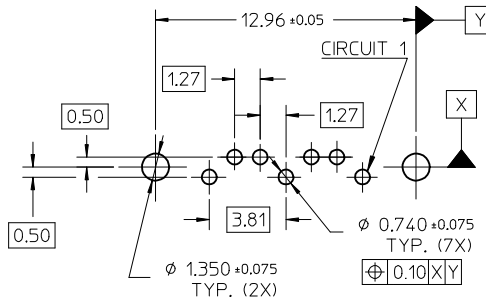
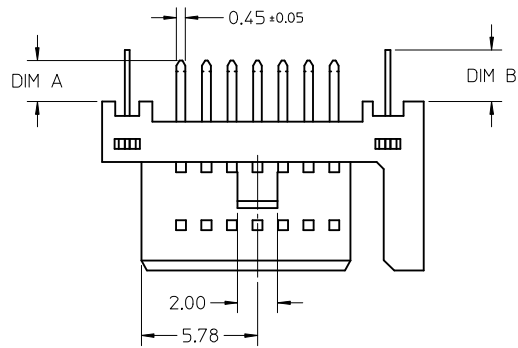
SECTION C-C



SEE SHEET 2 EC NO: S2017-0539 DRW:DBFAN 2017/04/12 CHKD:JKACHLIC 2017/04/12 APPR:JKACHLIC 2017/04/12	QUALITY SYMBOLS $F_A=0$ $F_E=0$ $F_P=0$	GENERAL TOLERANCES (UNLESS SPECIFIED)		DIMENSION STYLE MM ONLY		SCALE 4:1	DESIGN UNITS METRIC	THIRD ANGLE PROJECTION	
			mm	INCH	DRAWN BY GRATE MA	DATE 2004/02/02	TITLE 1.27MM HIGH SPEED PLUG VERTICAL TYPE		
		4 PLACES	± ---	± ---	CHECKED BY YA JUN	DATE 2004/02/02			
		3 PLACES	± ---	± ---	APPROVED BY RZHANG	DATE 2010/11/03	MOLEX INCORPORATED DOCUMENT NO. SD-67491-001		
2 PLACES	± 0.15	± ---	MATERIAL NO.		SHEET NO. 1 OF 2				
1 PLACE	± 0.25	± ---	ANGULAR ± 3°		SEE SHEET 2				
DRAFT WHERE APPLICABLE MUST REMAIN WITHIN DIMENSIONS				SIZE A3	THIS DRAWING CONTAINS INFORMATION THAT IS PROPRIETARY TO MOLEX INCORPORATED AND SHOULD NOT BE USED WITHOUT WRITTEN PERMISSION				

	10	9	8	7	6	5	4	3	2	1
	P/N	PLATING TYPE	DIM "A"	DIM "B"	COLOR	SOLDE AREA PLATING				
F	67491-0020	SEE NOTE 2(a)	2.05	2.57	BLACK	PURE TIN MATTE FINISH				
	67491-0021	SEE NOTE 2(b)								
	67491-0022	SEE NOTE 2(c)								
	67491-0025	SEE NOTE 2(a)	2.35							
	67491-2020	SEE NOTE 2(a)	2.05	2.57	BLUE, PANTONE NO. 293C ΔE<3					
	67491-2021	SEE NOTE 2(b)								
E	67491-2025	SEE NOTE 2(a)	2.35	3.00	3.20	BLACK				
	67491-2027	SEE NOTE 2(c)								
	67491-3010	SEE NOTE 2(a)								
	67491-3011	SEE NOTE 2(b)	3.00	3.20	BLACK					
	67491-3012	SEE NOTE 2(c)								
67491-3110	SEE NOTE 2(a)	3.00	3.20	BLUE, PANTONE NO. 293C ΔE<3						

ADD DIM "B" AT F8 EC NO: S2017-0539 DRW:DBFAN 2017/04/12 CHKD:JKACHLIC 2017/04/12 APPR:JKACHLIC 2017/04/12	QUALITY SYMBOLS  F=0  E=0  B=0	GENERAL TOLERANCES (UNLESS SPECIFIED)		DIMENSION STYLE MM ONLY		SCALE 4:1	DESIGN UNITS METRIC	THIRD ANGLE PROJECTION		
			mm	INCH	DRAWN BY GRATE MA	DATE 2004/02/02	TITLE 1.27MM HIGH SPEED PLUG VERTICAL TYPE			
		4 PLACES	± ---	± ---	CHECKED BY YA JUN	DATE 2004/02/02				
		3 PLACES	± ---	± ---	APPROVED BY RZHANG	DATE 2010/11/03	MOLEX INCORPORATED		DOCUMENT NO. SD-67491-001	
2 PLACES	± 0.15	± ---	MATERIAL NO. SEE CHART		SHEET NO. 2 OF 2					
1 PLACE	± 0.25	± ---	DRAFT WHERE APPLICABLE MUST REMAIN WITHIN DIMENSIONS				THIS DRAWING CONTAINS INFORMATION THAT IS PROPRIETARY TO MOLEX INCORPORATED AND SHOULD NOT BE USED WITHOUT WRITTEN PERMISSION			
ANGULAR ± 3 °										



RECOMMENDED P.C.B. LAYOUT (T=1.6mm/2.0mm/2.4mm)

NOTES:

1. MATERIAL:

HOUSING: THERMAL PLASTIC, UL94V-0, COLOR: SEE SHEET2  
 TERMINAL/PEG: COPPER ALLOY, THICKNESS=0.25MM

2. TERMINAL PLATING:

- CONTACT AREA: (a) GOLD FLASH
- (b) 0.76 MICRON GOLD PLATED
- (c) 0.38 MICRON GOLD PLATED

SOLDER TAIL:

1.27 MICRON MIN. MATTE TIN PLATED

UNDER PLATE:

1.27 MICRON MIN. NICKEL PLATED

3. PEG PLATING:

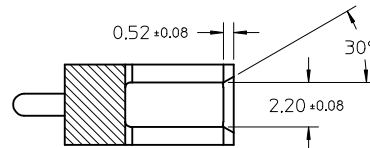
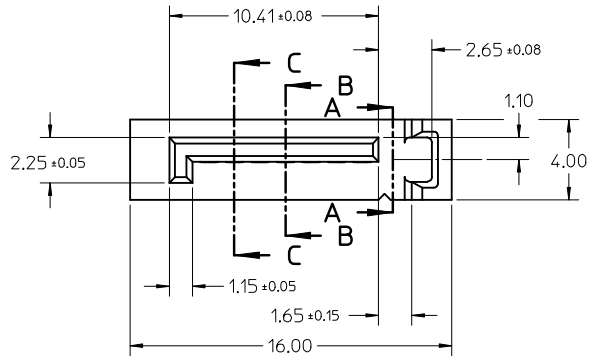
- 1.27 MICRON MIN. MATTE TIN PLATED OVERALL
- 1.27 MICRON MIN. NICKEL UNDER PLATED

4. PACKAGING SPECIFICATION REFER TO PK-67491-001

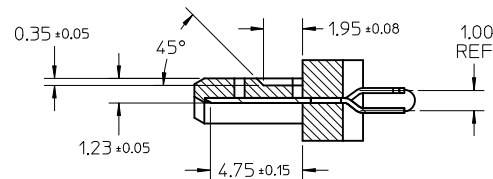
5. PRODUCT SPECIFICATION REFER TO PS-67491-001

6. MATING PART: 67489

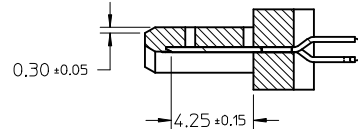
7. RECOMMENDED PROCESS: WAVE SOLDERING



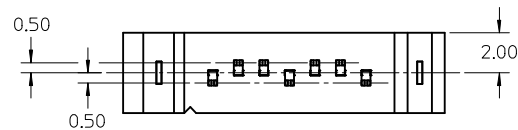
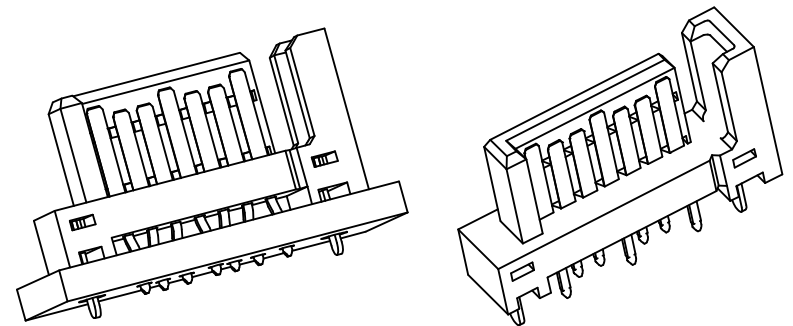
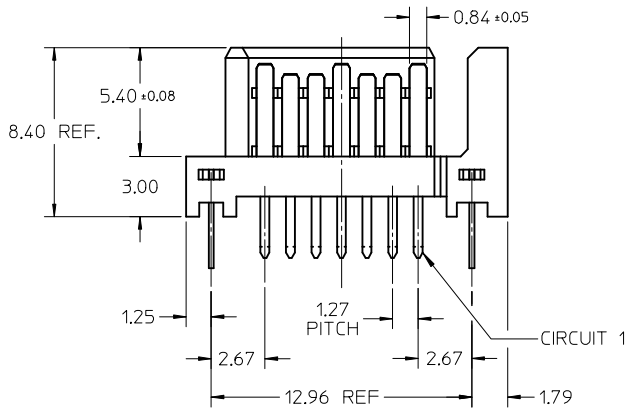
SECTION A-A



SECTION B-B

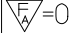
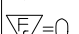



SECTION C-C



SEE SHEET 2 EC NO: S2017-0539 DRW:DBFAN 2017/04/12 CHKD:JKACHLIC 2017/04/12 APPR:JKACHLIC 2017/04/12	QUALITY SYMBOLS $F_A=0$ $F_B=0$ $F_C=0$	GENERAL TOLERANCES (UNLESS SPECIFIED)		DIMENSION STYLE MM ONLY		SCALE 4:1	DESIGN UNITS METRIC	THIRD ANGLE PROJECTION	
			mm	INCH	DRAWN BY GRATE MA	DATE 2004/02/02	TITLE 1.27MM HIGH SPEED PLUG VERTICAL TYPE		
		4 PLACES	± ---	± ---	CHECKED BY YA JUN	DATE 2004/02/02			
		3 PLACES	± ---	± ---	APPROVED BY RZHANG	DATE 2010/11/03	MOLEX INCORPORATED DOCUMENT NO. SD-67491-001		
2 PLACES	± 0.15	± ---	MATERIAL NO.		SHEET NO. 1 OF 2				
1 PLACE	± 0.25	± ---	DRAFT WHERE APPLICABLE MUST REMAIN WITHIN DIMENSIONS		THIS DRAWING CONTAINS INFORMATION THAT IS PROPRIETARY TO MOLEX INCORPORATED AND SHOULD NOT BE USED WITHOUT WRITTEN PERMISSION				

	10	9	8	7	6	5	4	3	2	1
	P/N	PLATING TYPE	DIM 'A'	DIM 'B'	COLOR	SOLDE AREA PLATING				
F	67491-0020	SEE NOTE 2(a)	2.05	2.57	BLACK	PURE TIN MATTE FINISH				
	67491-0021	SEE NOTE 2(b)								
	67491-0022	SEE NOTE 2(c)								
	67491-0025	SEE NOTE 2(a)	2.35							
	67491-2020	SEE NOTE 2(a)	2.05	2.57	BLUE, PANTONE NO. 293C ΔE<3					
	67491-2021	SEE NOTE 2(b)								
E	67491-2025	SEE NOTE 2(a)	2.35	3.00	3.20	BLACK				
	67491-2027	SEE NOTE 2(c)								
	67491-3010	SEE NOTE 2(a)								
	67491-3011	SEE NOTE 2(b)	3.00	3.20	BLACK					
	67491-3012	SEE NOTE 2(c)								
67491-3110	SEE NOTE 2(a)	3.00	3.20	BLUE, PANTONE NO. 293C ΔE<3						

ADD DIM 'B' AT F8 EC NO: S2017-0539 DRW:DBFAN 2017/04/12 CHKD:JKACHLIC 2017/04/12 APPR:JKACHLIC 2017/04/12	QUALITY SYMBOLS  F=0  E=0  B=0	GENERAL TOLERANCES (UNLESS SPECIFIED)		DIMENSION STYLE MM ONLY		SCALE 4:1	DESIGN UNITS METRIC	THIRD ANGLE PROJECTION		
			mm	INCH	DRAWN BY GRATE MA	DATE 2004/02/02	TITLE 1.27MM HIGH SPEED PLUG VERTICAL TYPE			
		4 PLACES	± ---	± ---	CHECKED BY YA JUN	DATE 2004/02/02				
		3 PLACES	± ---	± ---	APPROVED BY RZHANG	DATE 2010/11/03	MOLEX INCORPORATED			
2 PLACES	± 0.15	± ---	MATERIAL NO.	DOCUMENT NO.	SD-67491-001					
1 PLACE	± 0.25	± ---	ANGULAR ± 3 °		SEE CHART		THIS DRAWING CONTAINS INFORMATION THAT IS PROPRIETARY TO MOLEX INCORPORATED AND SHOULD NOT BE USED WITHOUT WRITTEN PERMISSION			
DRAFT WHERE APPLICABLE MUST REMAIN WITHIN DIMENSIONS										