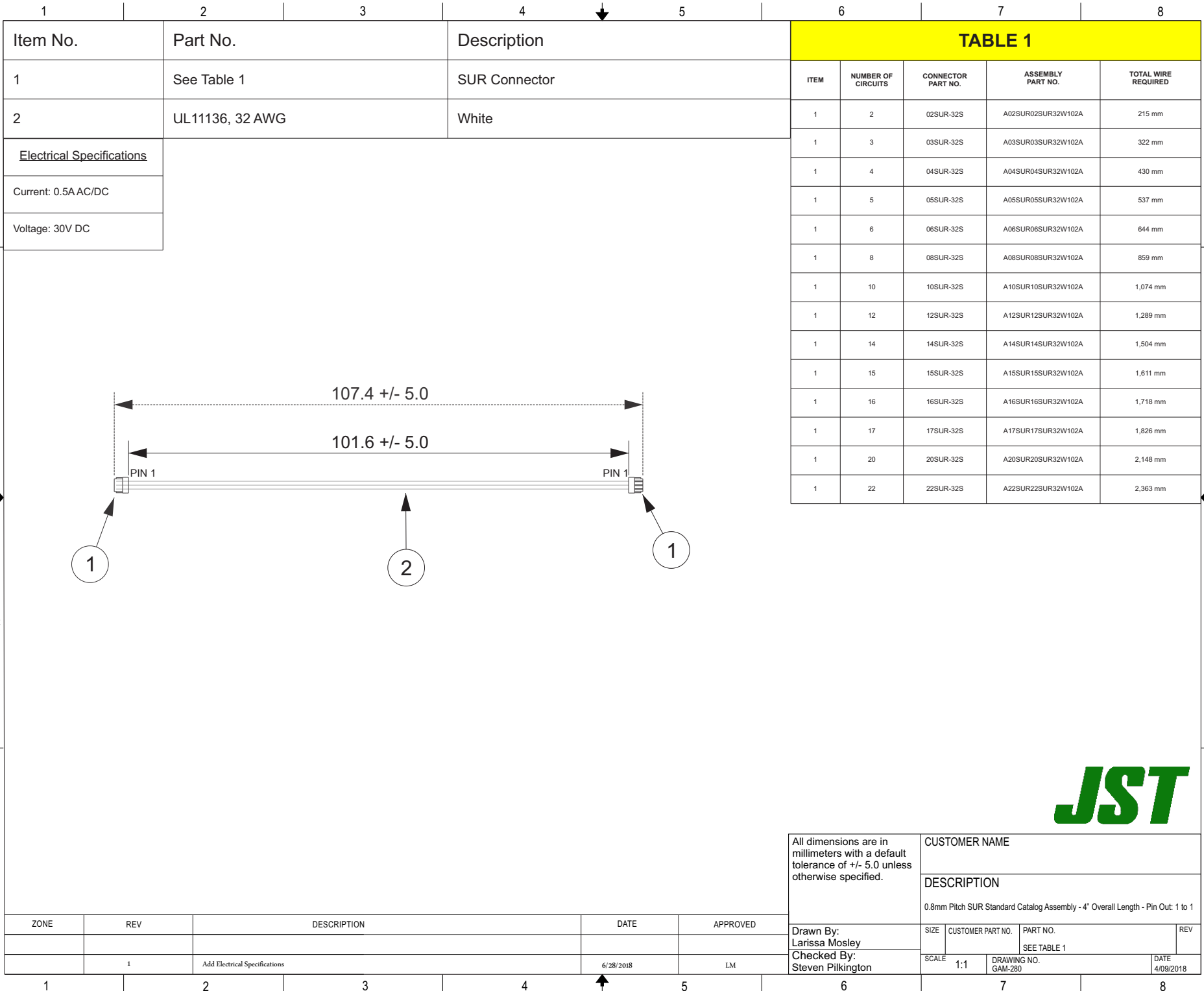


THIS DRAWING CONTAINS INFORMATION THAT IS PROPRIETARY TO J.S.T. AND SHALL NOT BE USED OR SHOWN WITHOUT WRITTEN PERMISSION.



All dimensions are in millimeters with a default tolerance of +/- 5.0 unless otherwise specified.		CUSTOMER NAME			
		DESCRIPTION			
		0.8mm Pitch SUR Standard Catalog Assembly - 4" Overall Length - Pin Out: 1 to 1			
Drawn By: Larissa Mosley	SIZE	CUSTOMER PART NO.	PART NO.	REV	
Checked By: Steven Pilkington	SCALE	SEE TABLE 1		DATE	
	1:1	DRAWING NO. GAM-280	DATE 4/09/2018		

ZONE	REV	DESCRIPTION	DATE	APPROVED
	1	Add Electrical Specifications	6/28/2018	LM