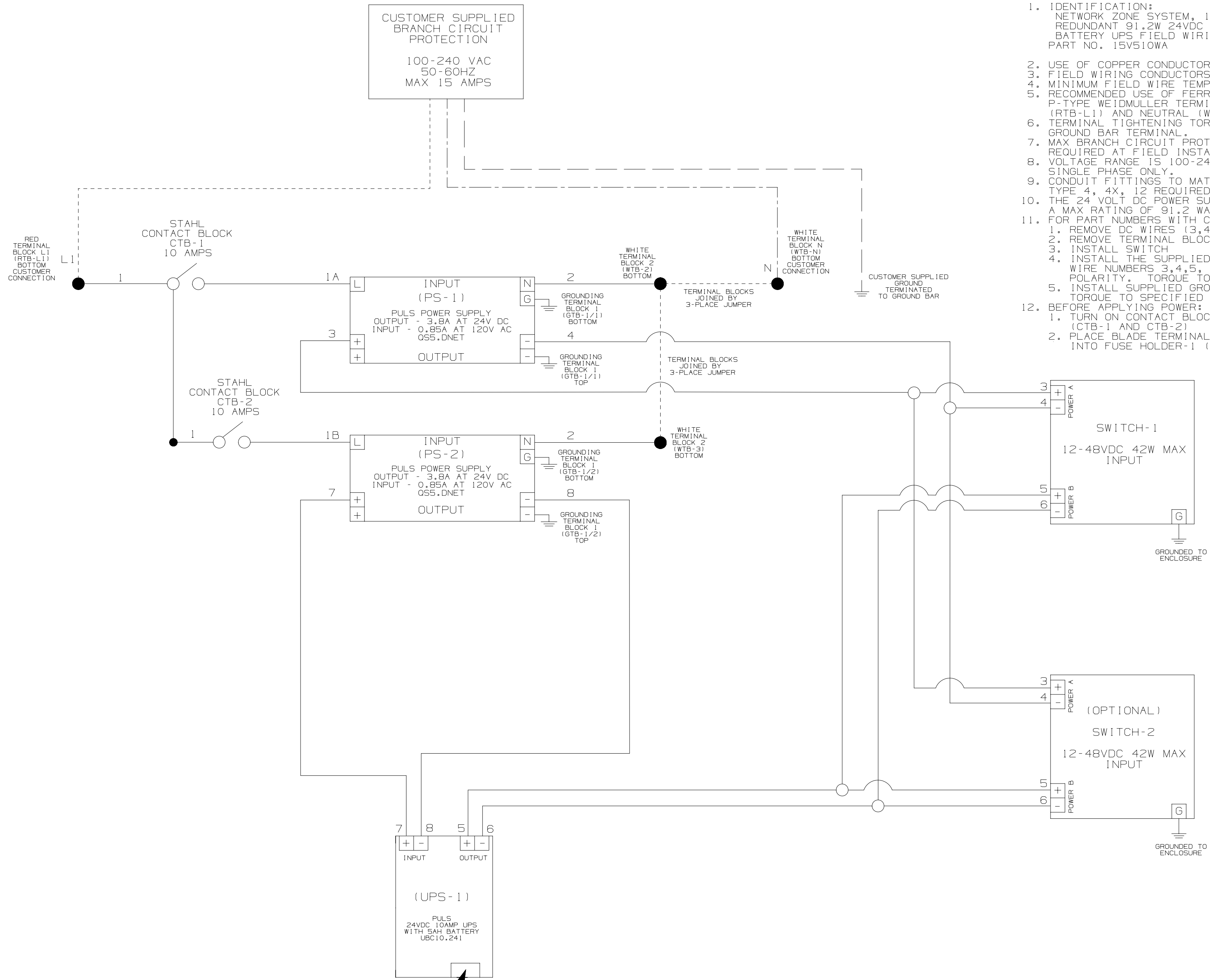


1. IDENTIFICATION:  
NETWORK ZONE SYSTEM, 100-240VAC INPUT,  
REDUNDANT 91.2W 24VDC POWER SUPPLIES, 24VDC  
BATTERY UPS FIELD WIRING DIAGRAM  
PART NO. 15V510WA
2. USE OF COPPER CONDUCTORS ONLY
3. FIELD WIRING CONDUCTORS TO BE A MINIMUM OF 14 AWG
4. MINIMUM FIELD WIRE TEMPERATURE RATING 60°C
5. RECOMMENDED USE OF FERRULES FOR TERMINATION INTO  
P-TYPE WEIDMULLER TERMINAL BLOCKS FOR LINE (HOT)  
(RTB-L1) AND NEUTRAL (WTB-N) CONNECTIONS.
6. TERMINAL TIGHTENING TORQUE OF 35 IN-LBS FOR  
GROUND BAR TERMINAL.
7. MAX BRANCH CIRCUIT PROTECTION RATING OF 15 AMPS  
REQUIRED AT FIELD INSTALL.
8. VOLTAGE RANGE IS 100-240 VAC, 50-60 HZ  
SINGLE PHASE ONLY.
9. CONDUIT FITTINGS TO MATCH ENCLOSURE RATINGS  
TYPE 4, 4X, 12 REQUIRED.
10. THE 24 VOLT DC POWER SUPPLIES (PS-1 AND PS-2) HAVE  
A MAX RATING OF 91.2 WATTS.
11. FOR PART NUMBERS WITH CUSTOMER SUPPLIED SWITCH  
1. REMOVE DC WIRES (3,4,5, AND 6) FROM TERMINAL BLOCKS  
2. REMOVE TERMINAL BLOCKS  
3. INSTALL SWITCH  
4. INSTALL THE SUPPLIED 24 VOLT WIRES FOR THE SWITCH,  
WIRE NUMBERS 3,4,5, AND 6. CHECK WIRE DIAGRAM FOR  
POLARITY. TORQUE TO SPECIFIED RATINGS.  
5. INSTALL SUPPLIED GROUND WIRE TO SWITCH.  
TORQUE TO SPECIFIED RATINGS.
12. BEFORE APPLYING POWER:  
1. TURN ON CONTACT BLOCKS 1 AND 2.  
(CTB-1 AND CTB-2)  
2. PLACE BLADE TERMINAL TYPE ATO 257030 LITTELFUSE  
INTO FUSE HOLDER-1 (FH-1)



FUSE HOLDER-1 (FH-1):  
BLADE TERMINAL TYPE  
ATO 257030 LITTELFUSE  
30 AMP / 32 VDC

							TITLE NETWORK ZONE SYSTEM, 100-240VAC INPUT, REDUNDANT 91.2W 24VDC POWER SUPPLIES, 24VDC BATTERY UPS FIELD WIRING DIAGRAM		
							ITEM REVISION NAME 15V510WA/02.PRT		
							DATASET FILE NAME 15V510WA_DC/02A.PRT		
							UNLESS OTHERWISE SPECIFIED, DIMENSIONAL TOLERANCES ARE: INCHES: .03, .015, .007   METRIC: .8, .46, .15   ANGLE: 1°		
							MATERIAL/COLOR: N/A		
							DRAWING NUMBER: 15V510WA		
O2A 10-18-16 NWW MBVE TIMH RELEASED TO CUSTOMER 15V510WA							THIRD ANGLE PROJECTION		
REV DATE BY CHK APR DESCRIPTION ECN							GRWN BY DATE CHK SCALE		
							NWW 2-25-16 TIMH N/A		
							SHT 1 OF 1 C		