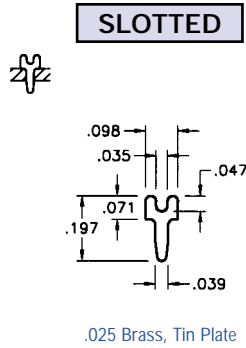


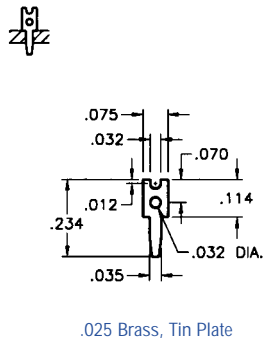
PC TEST POINT TERMINALS

PC TEST POINTS - SLOTTED & LOOP TYPES

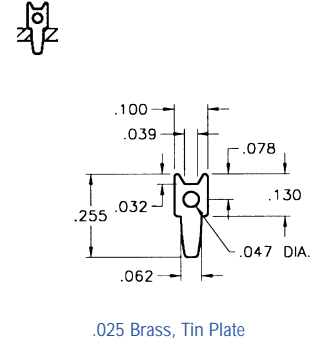
- Low profile, space saving designs for dense packaging
- Wide variety of configurations to suit most applications
- Safe, practical, economical replacement for wire-wrap posts
- Easy mount design, ideal for wave soldering
- Re-fit PC boards without need for re-design
- Provides easy access for production testing and field service troubleshooting
- Positive grip when using J hooks, EZ hooks, grabbers, clips, tips and probes
- Custom test point terminals can be manufactured to your specifications
- Other platings and materials available upon request



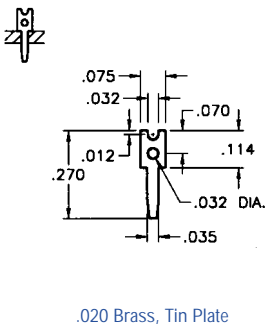
CAT. NO. 4950



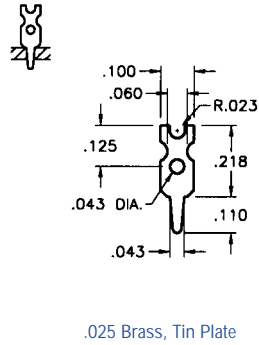
CAT. NO. 1030



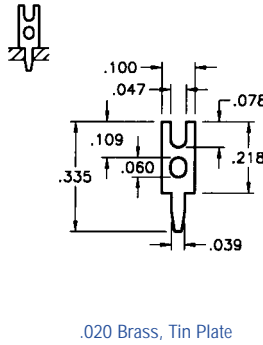
CAT. NO. 1032



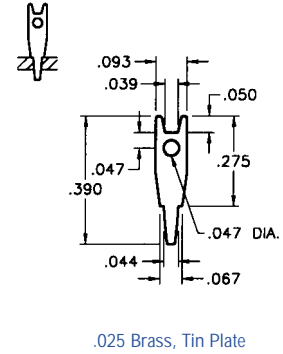
CAT. NO. 1031



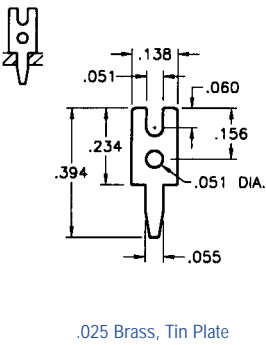
CAT. NO. 1034



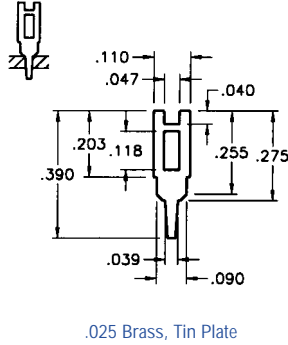
CAT. NO. 1035



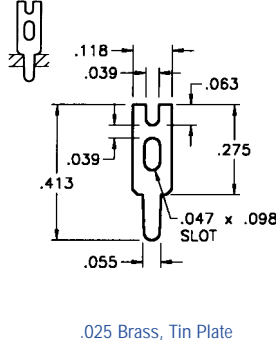
CAT. NO. 1036



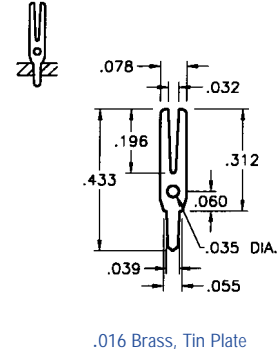
CAT. NO. 1039



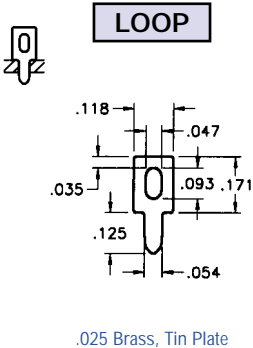
CAT. NO. 1040



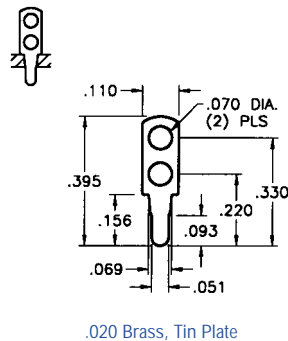
CAT. NO. 4951



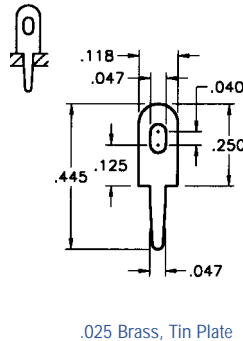
CAT. NO. 1037



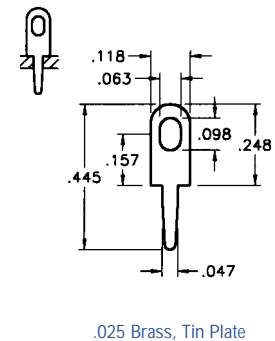
CAT. NO. 1033



CAT. NO. 1038



CAT. NO. 1249



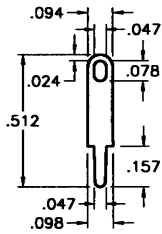
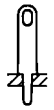
CAT. NO. 4952

PC TEST POINT TERMINALS

Designers' Choice

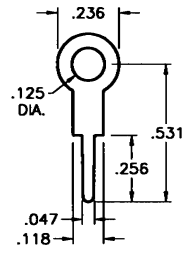


PC TEST POINTS - LOOP TYPES



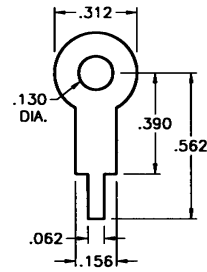
.020 Brass, Tin Plate

CAT. NO. 4953



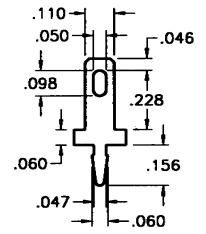
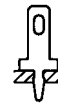
.020 Brass, Tin Plate

CAT. NO. 4954



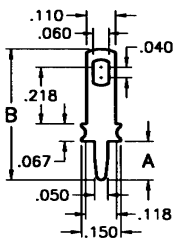
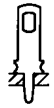
.015 Brass, Tin Plate

CAT. NO. 680



.020 Brass, Tin Plate

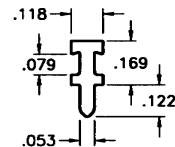
CAT. NO. 1250



.032 Brass, Tin Plate

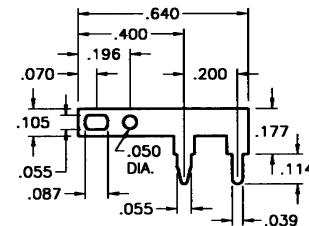
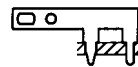
| CAT. NO. | A | B |
|----------|------|------|
| 1041 | .275 | .630 |
| 1046 | .150 | .503 |

CAT. NO. 1041



.025 Brass, Tin Plate

CAT. NO. 4955



.025 Brass, Tin Plate

CAT. NO. 1045

CUSTOM TEST POINT TERMINALS

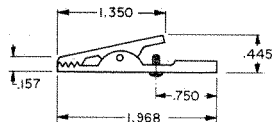
Keystone is fully integrated to meet your total design & production needs.

Manufacturing custom designs & modifications of standard items is our specialty.

Quotations on special stampings furnished promptly upon receipt of sample, sketch, print or CAD drawings.

ALLIGATOR CLIPS

LARGE CLIP • SCREW CONNECTION



JAW SPREAD
.315 max.

CAT. NO. 5048

MATERIAL: Clip: Steel, Nickel Plate

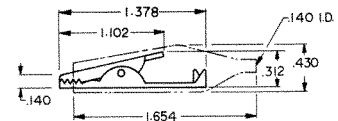
MEDIUM CLIP • SOLDER CONNECTION WITH STRAIN RELIEF



INSULATED



CAT. NO. 5038 - NON-INSULATED



JAW SPREAD
.236 max.

| CAT. NO. | INSULATOR COLOR |
|----------|-----------------|
| 5039 | RED |
| 5040 | BLACK |

MATERIAL: Clip: Steel, Nickel Plate Insulator: Vinyl

SMALL CLIP • SOLDER CONNECTION WITH STRAIN RELIEF

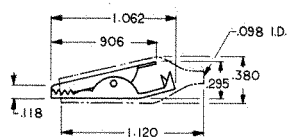


INSULATED



CAT. NO. 5033 - NON-INSULATED

| CAT. NO. | INSULATOR COLOR |
|----------|-----------------|
| 5034 | RED |
| 5035 | BLACK |
| 5036 | GREEN |
| 5037 | YELLOW |



JAW SPREAD
.236 max.

MATERIAL: Clip: Steel, Nickel Plate Insulator: Vinyl

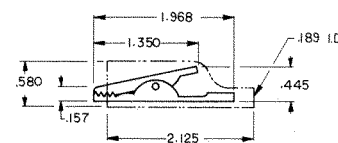
LARGE CLIP • SOLDER CONNECTION (BARREL ACCEPTS WIRE OR STANDARD BANANA PLUGS)



INSULATED



CAT. NO. 5044 - NON-INSULATED



JAW SPREAD
.315 max.

| CAT. NO. | INSULATOR COLOR |
|----------|-----------------|
| 5045 | RED |
| 5046 | BLACK |

MATERIAL: Clip: Steel, Nickel Plate Insulator: Vinyl