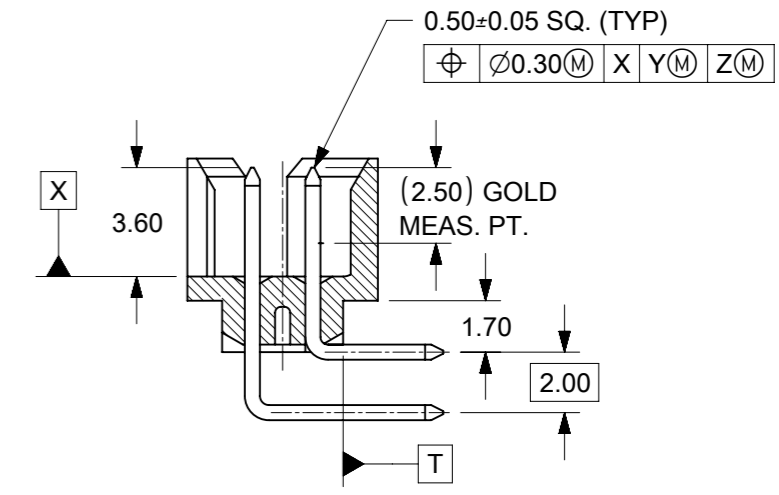
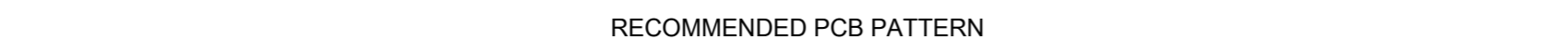


PART NO.	CKT SIZE	DIMENSION					PLATING OPTION $\Delta$
		A	B	C	D	E	
87833-2052	20	18.00	20.85	22.65	21.00	14.00	2
87833-5050	50	48.00	50.85	52.65	51.00	44.00	1
87833-5052	50	48.00	50.85	52.65	51.00	44.00	2



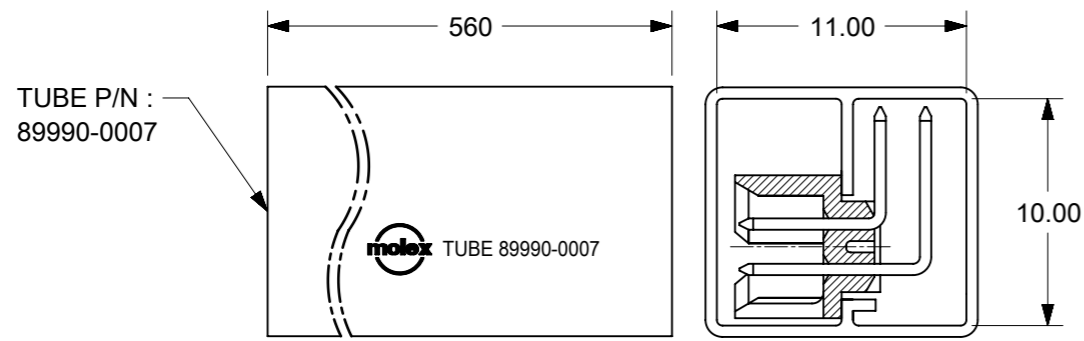
SECTION G-G

- NOTES:
- MATERIAL :  
HOUSING : 30% G.F., NYLON 46, UL94V-0, COLOR BLACK.  
PIN : 0.50mm SQ. PHOSPHOR BRONZE.
  - PLATING :  
1. 0.38 $\mu$ m GOLD IN CONTACT AREA AND 1.88 $\mu$ m MIN. TIN IN SOLDER TAIL AREA OVER 1.27 $\mu$ m MIN. NICKEL OVERALL.  
2. 0.05 $\mu$ m MIN. TO 0.13 $\mu$ m MAX. GOLD IN CONTACT AREA AND 1.88 $\mu$ m MIN. TIN IN SOLDER TAIL AREA OVER 1.27 $\mu$ m MIN. NICKEL OVERALL.
  - PRODUCT SPECIFICATION PS-87831-027 APPLIES.
  - LINKWAYS VARIES FROM PART TO PART BECAUSE OF DIFFERENT MOLD.
  - PARTS TO BE PACKED IN TUBE.
  - THIS HEADER MATES WITH MOLEX:  
a) CRIMP RECEPTACLE HOUSING, 51110 SERIES WITH CRIMP TERMINAL, 50394 SERIES.  
b) 2mm MILLIGRID DUAL ROW IDT, 87568 SERIES.
  - PARTS TO BE PACKED IN TUBE WITH MOISTURE BARRIER BAG.

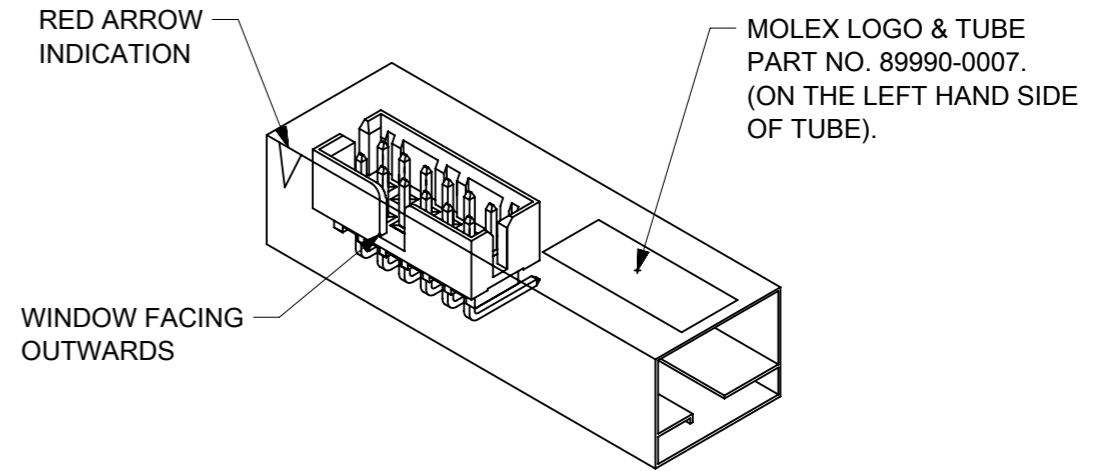


RECOMMENDED PCB PATTERN

SYMBOLS	THIS DRAWING CONTAINS INFORMATION THAT IS PROPRIETARY TO MOLEX ELECTRONIC TECHNOLOGIES, LLC AND SHOULD NOT BE USED WITHOUT WRITTEN PERMISSION		CURRENT REV DESC: SEE ECM 170067 FOR REFERENCE				
	DIMENSION UNITS	SCALE					
$\nabla = 0$	MM	1:1	GENERAL TOLERANCES (UNLESS SPECIFIED)		MGRID, R/A SHROUDED HDR W/SLOTS/STANDOFF & LONG SOLDER TAIL 3.00MM		
$\nabla = 0$			MM	INCH	PRODUCT CUSTOMER DRAWING		
$\nabla = 0$	4 PLACES	±			DOCUMENT NUMBER		
$\nabla = 0$	3 PLACES	±			DOC TYPE		
$\nabla = 0$	2 PLACES	±	0.2		DOC PART		
$\nabla = 0$	1 PLACE	±			REVISION		
$\nabla = 0$	0 PLACES	±			SD-87833-015		
$\nabla = 0$	ANGULAR TOL		± 3.0°		PSD		
$\nabla = 0$	DRAFT WHERE APPLICABLE MUST REMAIN WITHIN DIMENSIONS		THIRD ANGLE PROJECTION		001		
$\nabla = 0$			DRAWING		A5		
$\nabla = 0$			SERIES		1 OF 2		
$\nabla = 0$			MATERIAL NUMBER		SEE TABLE		
$\nabla = 0$			CUSTOMER		GENERAL MARKET		



REF: ORIENTATION OF PART IN TUBE.



REF: ORIENTATION OF PART IN TUBE.  
(FOR THE REFERENCE OF PART/TUBE ASSEMBLY.)

THIS DRAWING CONTAINS INFORMATION THAT IS PROPRIETARY TO MOLEX ELECTRONIC TECHNOLOGIES, LLC AND SHOULD NOT BE USED WITHOUT WRITTEN PERMISSION												
SYMBOLS	DIMENSION UNITS		SCALE		CURRENT REV DESC: SEE ECM 170067 FOR REFERENCE							
	MM		1:1									
▽ = 0	GENERAL TOLERANCES (UNLESS SPECIFIED)				EC NO: 611028			MGRID, R/A SHROUDED HDR W/SLOTS/STANDOFF & LONG SOLDER TAIL 3.00MM				
	MM		INCH									
▽ = 0	4 PLACES	±			DRWN: ME 2019/01/17			PRODUCT CUSTOMER DRAWING				
▽ = 0	3 PLACES	±										
▽ = 0	2 PLACES	±	0.2		CHK'D: MKAMATHMARAK 2019/01/25			DOCUMENT NUMBER				
▽ = 0	1 PLACE	±										
▽ = 0	0 PLACES	±			INITIAL REVISION:			SD-87833-015				
▽ = 0	ANGULAR TOL ± 3.0°										DRWN: ATSEE 2003/10/27	
▽ = 0	DRAFT WHERE APPLICABLE MUST REMAIN WITHIN DIMENSIONS				THIRD ANGLE PROJECTION			DOC PART				
▽ = 0					DRAWING			REVISION				
				A3-SIZE			SERIES			MATERIAL NUMBER		
				87833			CUSTOMER			SHEET NUMBER		
				SEE TABLE			GENERAL MARKET			2 OF 2		