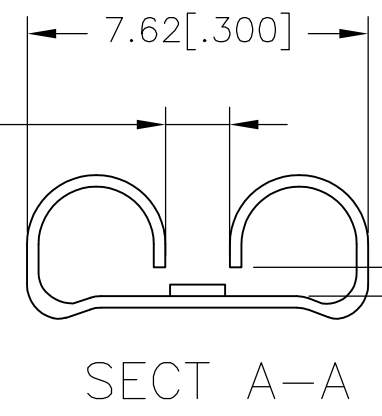
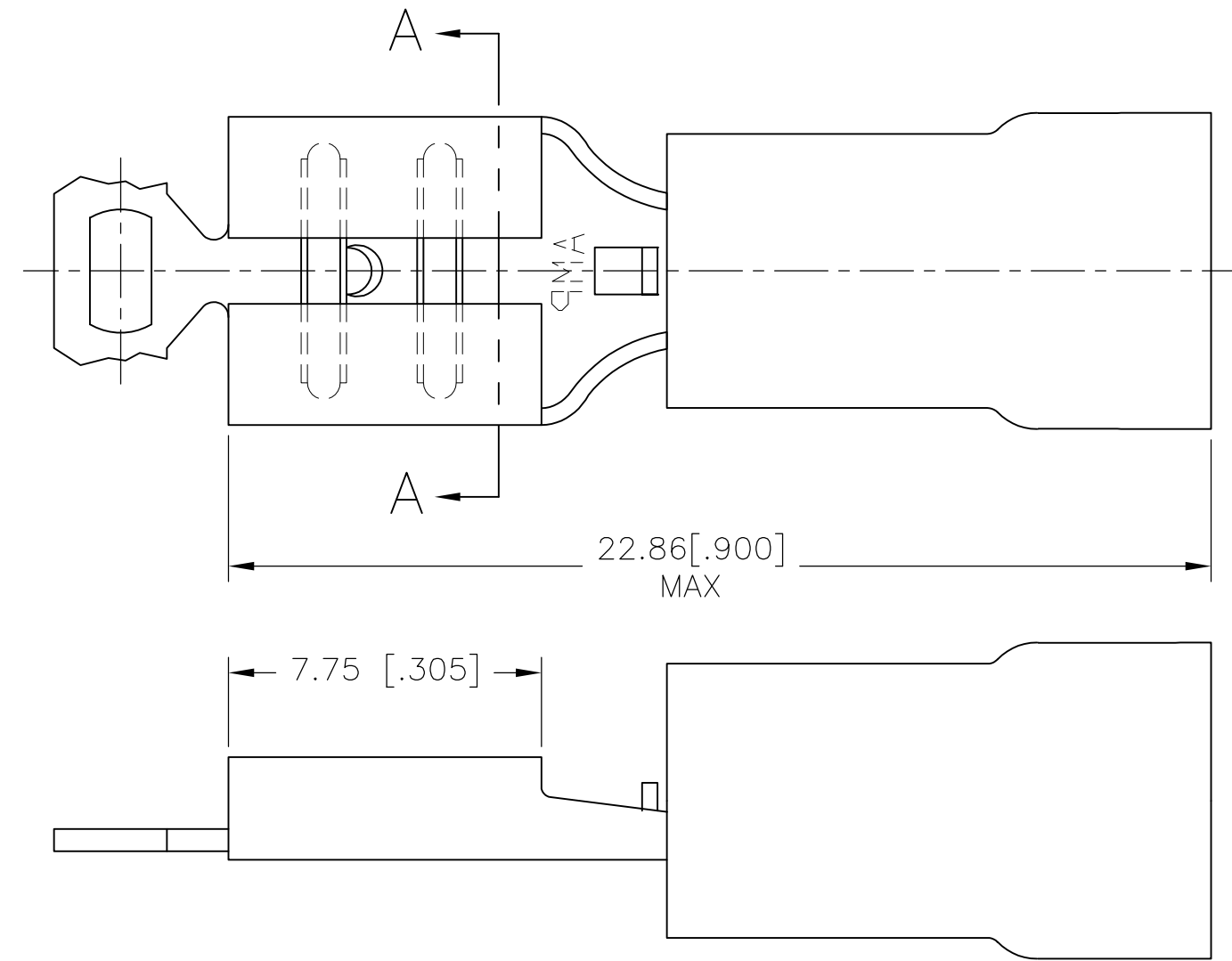


THIS DRAWING IS UNPUBLISHED. RELEASED FOR PUBLICATION  
 © COPYRIGHT - By - ALL RIGHTS RESERVED.

REVISIONS					
P	LTR	DESCRIPTION	DATE	DWN	APVD
	CE	REV PER 0G3A-0319-03	27MAY03	JR	TM
	CE1	REVISED PER ECR-17-001564	23FEB2017	RS	DR



FITS "250" SERIES FASTON TAB

<b>AMP WIRE RANGE</b>	FILE E66717	LR7189 Certified
22-18 AWG STRANDED	22-18 AWG STRANDED	22-18 AWG STRANDED

- 1 INSULATION DIA .140 MAX.
- 2 FITS TAB .032 THK.
- 3 MATERIAL: BODY, BRASS PER ASTM B36, 0.46±0.05[.018±.002]  
SLEEVE: COPPER PER ASTM B152  
INSULATION: NYLON PER ASTM D4066.
- 4 FINISH: BODY & SLEEVE TIN PLATE 0.00254[.000100] MIN EXT THK. PER ASTM B545.

3500	REEL	640902-1
QTY	PACKAGE TYPE	PART NO

<b>AMP INCORPORATED CUSTOMER SERVICE SYSTEMS</b>	
FOR ADDITIONAL PRODUCT INFORMATION OR COPIES OF DRAWINGS AND TECHNICAL DOCUMENTS	PRODUCT INFORMATION CENTER 1-800-522-6752
FOR APPLICATION TOOLING INFORMATION	TOOLING ASSISTANCE CENTER 1-800-722-1111
FOR ORDER ENTRY	1-800-526-5142

MAX RECOMMENDED OPERATING TEMPERATURE: 105°C [221°F]
VOLTAGE RATING: 300V MAX
CIRCULAR MIL AREA: 0.26-0.96mm <sup>2</sup> [509-1,900] STRANDED

THIS DRAWING IS A CONTROLLED DOCUMENT.	
DIMENSIONS: mm [INCHES]	TOLERANCES UNLESS OTHERWISE SPECIFIED:
	0 PLC ± -
	1 PLC ± -
	2 PLC ± .38[.02]
	3 PLC ± .127[.005]
	4 PLC ± -
	ANGLES ± -
MATERIAL	FINISH

DWN	L OLMEDA	26JUN95
CHK	M ELLIS	26JUN95
APVD	B BARE	26JUN95
PRODUCT SPEC	UL 310	
APPLICATION SPEC	114-1002	
WEIGHT	-	

TE Connectivity			
NAME RECEPTACLE, 250 SERIES, FASTON , PIDG , 22-18			
SIZE	CAGE CODE	DRAWING NO	RESTRICTED TO
A3	00779	C-640902	-
CUSTOMER DRAWING		SCALE 6:1	SHEET 1 OF 1 REV CE1