

PLEASE CHECK WWW.MOLEX.COM FOR LATEST PART INFORMATION

Part Number: [1301490024](#)
Status: **Active**
Overview: [Heavy-Duty Industrial Wiring Devices](#)
Description: Safeway Flanged Inlet, 3 Pole/3 Wire, Non-NEMA Locking, 125V/250V

Documents:

[RoHS Certificate of Compliance \(PDF\)](#) [Product Literature \(PDF\)](#)

Agency Certification

CSA	LR6837
UL	E10176

General

Product Family	Wiring Devices
Series	130149
Exclude SD Check	Yes
IP Rating	N/A
NEMA Configuration	Non-NEMA Locking
Overview	Heavy-Duty Industrial Wiring Devices
Product Literature Order No	987650-8068
Product Name	Safeway
Receptacle Type	Single
Specialty	N/A
Type	Inlet
UPC	78678802605

Physical

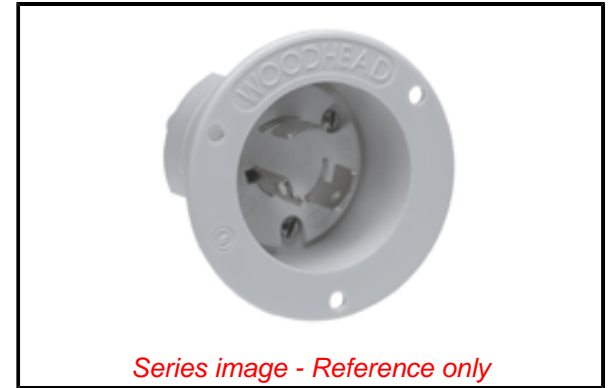
Flange	Yes
Flip Lid	No
Gender	Male
Length	N/A
Locking Blade	Yes
Poles	3-pole/3-wire

Electrical

Cord Type	N/A
Current - Maximum per Contact	20.0A
GFCI	No
Lighted Connector	No
Voltage - Maximum	125V / 250V

Material Info

Engineering Number	2608MB
--------------------	--------



EU ELV

Not Reviewed

EU RoHS

Not Reviewed

REACH SVHC

Not Reviewed

Halogen-Free

Status

Not Reviewed

For more information, please visit [Contact US](#)

China ROHS

Not Reviewed

ELV

Not Reviewed

RoHS Phthalates

Not Reviewed

Search Parts in this Series

[130149 Series](#)

PLEASE CHECK WWW.MOLEX.COM FOR LATEST PART INFORMATION