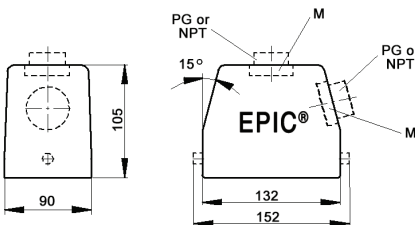
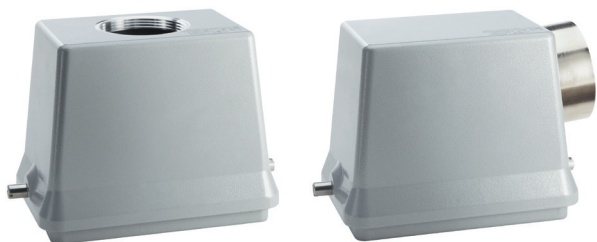


# EPIC® HB 48 standard hood

Hood with single lever bolts




all dimensions are in mm

### Technical data

**IP Protection class:** NEMA 4, NEMA 12  
IP65

### Complete the installation

 HB dust covers  
page 429

### Approvals



### PG

PG hood		SKINTOP® gland	
size	part number	plastic	metal
<b>Top entry</b>			
PG 29	101550	53015060	52015760
PG 36	101560	53015070	52015765
PG 42	101570	53015080	52015766
<b>Side entry</b>			
PG 29	101580	53015060	52015760
PG 36	101590	53015070	52015765
PG 42	101600	53015080	52015766

### NPT

NPT hood		SKINTOP® gland	
size	part number	plastic	metal
<b>Top entry</b>			
1"	101550NP	S 1101	53112044
1¼"	101560NP	—	53112054
<b>Side entry</b>			
1"	101580NP	S 1101	53112044
1¼"	101590NP	—	53112054

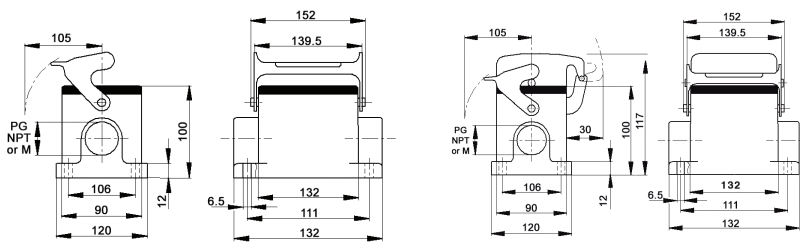
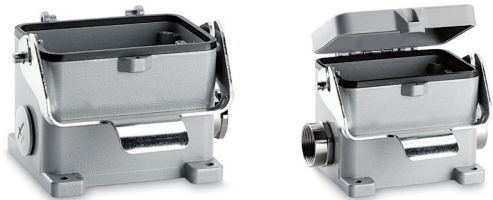
### metric

Metric hood*		SKINTOP® gland	
size	part number	plastic	metal
<b>Top entry</b>			
M32	19155000	53111040	53112040
M40	19156000	53111050	53112050
M50	19157000	53111060	53112060
<b>Side entry</b>			
M32	19158000	53111040	53112040
M40	19159000	53111050	53112050
M50	19160000	53111060	53112060

\* Metric hoods do not come with a neck

# EPIC® HB 48 surface mount base

Surface mount base with single lever




all dimensions are in mm

### Technical data

**IP Protection class:** NEMA 4, NEMA 12  
IP65

### Complete the installation

 HB dust covers  
page 429

### Approvals



### PG

PG base	Dust cover	SKINTOP® gland	
size part number		plastic	metal
<b>One entry</b>			
29 101650	no	53015060	52015760
29 101670	yes	53015060	52015760
36 101651	no	53015070	52015765
36 101671	yes	53015070	52015765
<b>Two entries</b>			
29 101660	no	53015060	52015760
29 101680	yes	53015060	52015760
36 101661	no	53015070	52015765
36 101681	yes	53015070	52015765

PG base provided with EPIC® SM/SP gland

### NPT

NPT base	Dust cover	SKINTOP® gland	
size part number		plastic	metal
<b>One entry</b>			
1" 101650NP	no	S 1101	53112044
1" 101670NP	yes	S 1101	53112044
1¼" 101651NP	no	—	53112054
1¼" 101671NP	yes	—	53112054
<b>Two entries</b>			
1" 101660NP	no	S 1101	53112044
1" 101680NP	yes	S 1101	53112044
1¼" 101661NP	no	—	53112054
1¼" 101681NP	yes	—	53112054

NPT base provided with NPT fitting

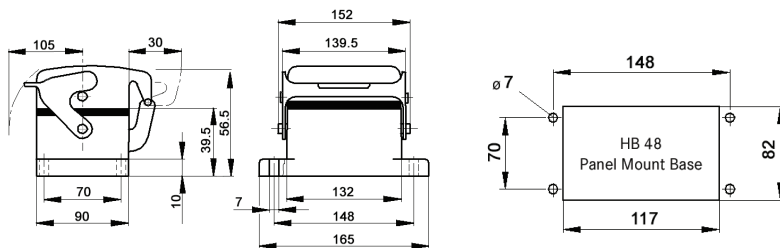
### metric

Metric base	Dust cover	SKINTOP® gland	
size part number		plastic	metal
<b>One entry</b>			
32 19165000	no	53111040	53112040
32 19167000	yes	53111040	53112040
40 19165100	no	53111050	53112050
40 19167100	yes	53111050	53112050
<b>Two entries</b>			
32 19166000	no	53111040	53112040
32 19168000	yes	53111040	53112040
40 19166100	no	53111050	53112050
40 19168100	yes	53111050	53112050

Recommended SKINTOP® assumes minimal OD variance. Additional configurations are available; please see our SKINTOP® section.  
If not otherwise specified, all values relating to the product are nominal values.  
Photographs are not to scale and are not true representations of the products in question.

# EPIC® HB 48 panel mount base

## Panel mount base with single lever




all dimensions are in mm


**Technical data**

**IP Protection class:** NEMA 4, NEMA 12  
IP65

**Complete the installation**

 HB dust covers  
page 429

**Approvals**



Dust cover included	Hardware	Part number
no	—	10161000
yes	dust cover bolts	10152500
yes	dust cover hold screw	10152000

Recommended SKINTOP® assumes minimal OD variance. Additional configurations are available; please see our SKINTOP® section.  
If not otherwise specified, all values relating to the product are nominal values.  
Photographs are not to scale and are not true representations of the products in question.