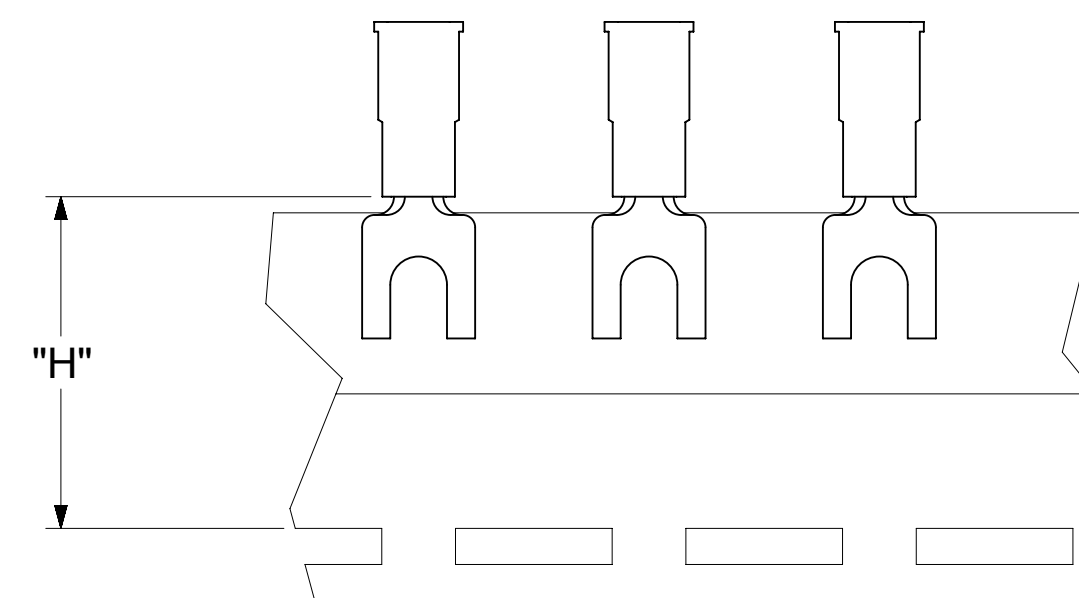
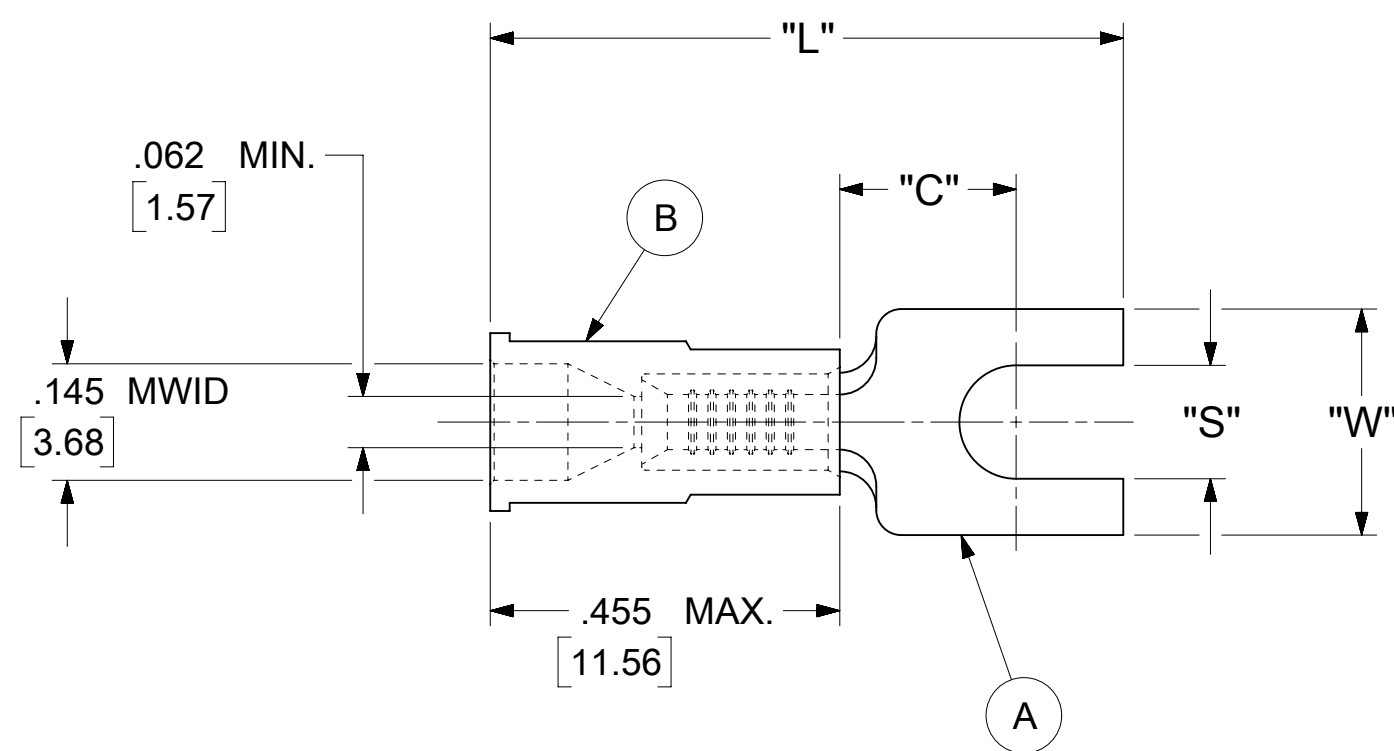


LOOSE PIECE		TAPE MOUNTED		SPECIFICATIONS						
MATERIAL NUMBER	ENGINEERING NUMBER	MATERIAL NUMBER	ENGINEERING NUMBER	STUD SIZE	"S" ±.005 [0.13]	"W" ±.010 [0.25]	"C" MIN.	"L" MAX.	"H"	STOCK THICKNESS
191300005	A-234-06X	---	---	6	.146 [3.71]	.291 [7.39]	.207 [5.26]	.835 [21.21]	---	.028 $\frac{+.001}{-.000}$ [0.71]
191300006	A-234-08X	---	---	8	.173 [4.39]					
191300007	A-234-10X	---	---	10	.198 [5.03]					
191300008	A-238-04X	---	---	4	.119 [3.02]	.245 [6.22]	.207 [5.26]	.835 [21.21]	.980 [24.89]	.028 $\frac{+.001}{-.000}$ [0.71]
191300009	A-238-06X	191420009	A-238-06XT	6	.146 [3.71]					



PARTS ON TAPE

- NOTES:
- MATERIAL:
 - (A). SPADE TONGUE TERMINAL: COPPER
 - PLATING: ELECTRO-TIN (.0003 MIN.)
 - (B). INSULATION: MOLDED PVC (RED)
 - MWID: MAXIMUM WIRE INSULATION DIAMETER
0.25 -1.5 MM²
 - WIRE SIZE: 22 -18 AWG
0.25 -1.5 MM²
 - ALL DIMENSIONS IN INCHES/[MM].
 - PARTS ARE ROHS COMPLIANT.
 - DIMS. SHOWN ARE FOR REFERENCE ONLY.

SYMBOLS	THIS DRAWING CONTAINS INFORMATION THAT IS PROPRIETARY TO MOLEX ELECTRONIC TECHNOLOGIES, LLC AND SHOULD NOT BE USED WITHOUT WRITTEN PERMISSION									
	DIMENSION UNITS		SCALE		CURRENT REV DESC: MIGRATION TO ECTR/NX					
	INCH/MM		NTS		EC NO: 620952 DRWN: ABENJAMINLW 2019/06/27 CHK'D: GROJAS01 2019/07/19 APPR: JMACNEIL 2019/08/05 INITIAL REVISION: DRWN: JJ 1984/10/29 APPR: JMACNEIL 2019/08/05					
	GENERAL TOLERANCES (UNLESS SPECIFIED)									
▽ = 0	4 PLACES	±	---	±	---	molex SPADE TONGUE TERMINAL INSULKRIMP 200-SERIES PRODUCT CUSTOMER DRAWING DOCUMENT NUMBER: 191300004 DOC TYPE: PSD DOC PART: 000 REVISION: A MATERIAL NUMBER: SEE TABLE CUSTOMER: GENERAL MARKET SHEET NUMBER: 1 OF 1				
▽ = 0	3 PLACES	±	---	±	.005					
▽ = 0	2 PLACES	±	0.13	±	.01					
▽ = 0	1 PLACE	±	0.25	±	---					
☒ = 0	0 PLACES	±	---	±	---					
■ = 0	ANGULAR TOL ± 0.5°		THIRD ANGLE PROJECTION		DRAWING		SERIES			
▽ = 0	DRAFT WHERE APPLICABLE MUST REMAIN WITHIN DIMENSIONS		C-SIZE		19130					