

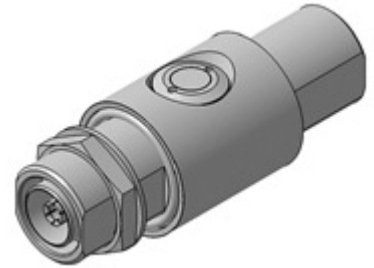
## EMP Protector 3407.41.0052

### Description

Quarter-wave stub technology with integrated high-pass filter

#### Benefits

- Broad-band design
- Space saving inline design
- Multi-band operation
- Compliant to IEC 61643-21



### Product Configuration

Main path connectors	Port 1: <u>unprotected</u> , 7/16 jack (female) - Port 2: <u>protected</u> , 7/16 jack (female)
Mounting and grounding	MH110 (bulkhead mounting), M6 (screw), brk (bracket)
Side of bulkhead	protected side
Design speciality	inline design

### Technical Data

#### Electrical Data

Impedance	50 $\Omega$	
Frequency range	690 - 2700 MHz	690 - 2500 MHz
Return loss	$\geq 23$ dB	$\geq 26$ dB
Insertion loss	$\leq 0.1$ dB	$\leq 0.1$ dB
RF CW power	$\leq 500$ W	$\leq 500$ W
PIM 3rd order	-155 dBc typ.	-155 dBc typ.

Surge current handling capability	25 single / 20 multiple kA (test pulse 8/20 $\mu$ s)
Residual pulse energy	0.03 $\mu$ J typically (test pulse 4 kV 1.2/50 $\mu$ s / 2 kA 8/20 $\mu$ s) main path - protected side

#### Mechanical Data

Number of matings	500
Weight	621 g

#### Environmental Data

Operating temperature	-40 $^{\circ}$ C to +85 $^{\circ}$ C
Waterproof degree	IP67 (according to IEC 60529, data refer to the coupled state)
2011/65/EU (RoHS - including 2015/863 and 2017/2102)	compliant acc. Annex III

#### Material Data

Piece Parts	Material	Surface Plating
Housing	Brass	SUCOPLATE (R) Plating
Port 1 center contact	Brass	Silver Plating
Port 2 center contact	Bronze	Silver Plating

### Related Documents

Outline drawing	DOU-00227975
Mounting instruction	DOC-0000176104