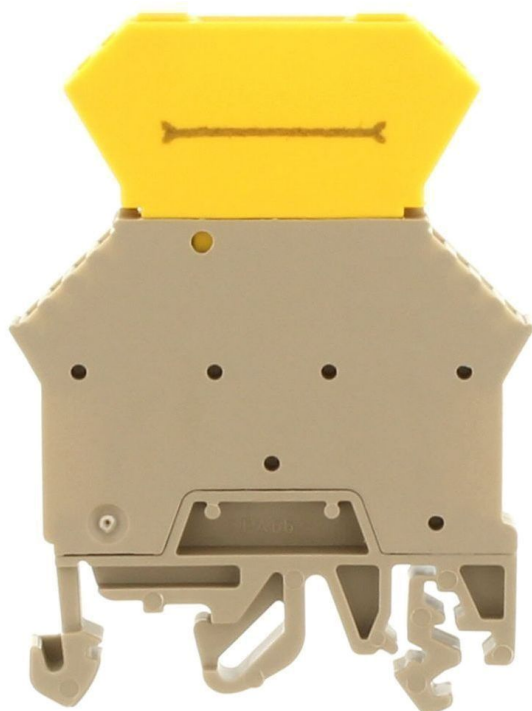
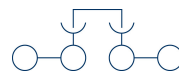


1395.2

TRK 1,5/STB/DS BG



M3



Disconnect terminal, Screw connection, Mounting type: Mounting rail TS 35/7.5 and TS 32, Rated cross-section: 2.5 mm², Width: 6 mm, Colour: Beige

Business data

Packaging unit	50
Quantity unit	PC
Weight per piece (not including packaging)	13 g
Weight per piece (including packaging)	13.5 g
Unit of weight	G
Customs number	85369010
Country of origin	DE
Product description	Disconnect terminal

1395.2

TRK 1,5/STB/DS BG

Technical data

Dimensions

Length	48 mm
Width	6 mm
Height TS 35/7.5	65 mm
Height TS 32	70 mm

Ratings

Rated voltage	400 V
Rated current	10 A
Rated cross-section	2.5 mm ²
Rated impulse voltage	4 kV
Overvoltage category	III
Contamination degree	3
Maximum power dissipation for nominal condition	0.32 W

Technical data

Connection data

Connection principle	Screw connection
Connection position	Lateral
Connections	2
Number of terminals per level	2
Number of levels	1
Wire cross-section single-core (rigid) / stranded, min.	0.2 mm ²
Wire cross-section single core (rigid)/stranded, max.	4 mm ²
Wire cross-section stranded, min.	0.2 mm ²
Wire cross-section stranded, max.	4 mm ²
Wire cross-section stranded with wire-end ferrules, min.	0.2 mm ²
Wire cross-section stranded with wire-end ferrules, max.	2.5 mm ²
Wire cross-section AWG, min.	22
Wire cross-section AWG, max.	12
Stripping length	8 mm
Screw head	Slotted
Screw threading	M 3
Tightening torque, min.	0.5 Nm
Tightening torque, max.	1 Nm

Materials

Insulation housing	Polyamide 6.6
Flammability class UL 94	V-2
Working temperature, min.	-40 °C
Working temperature, max.	105 °C

Further technical data

Mounting type	Mounting rail TS 35/7.5 and TS 32
Gauge plug acc. to EN 60 947-1	A4
End plate required	✓
Built-in test socket available	✓
Version of lengthwise partition	Pluggable

Data sheet



1395.2

TRK 1,5/STB/DS BG

Technical data

Print

Colour	Beige
--------	-------

Environmental Product Compliance

REACH Conform	yes
---------------	-----

REACH Reference date	2021-07-08
----------------------	------------

REACH Candidate Substance Note	No
--------------------------------	----

RoHS Conform	yes
--------------	-----

Approvals

cUL Recognized

cUL approval	C22.2 No 158
cUL Usegroup B: rated voltage	600 V
cUL Usegroup B: rated current	15 A
cUL Usegroup C: rated voltage	600 V
cUL Usegroup C: rated current	15 A
cUL wire cross-section single-core (rigid) AWG, min.	22
cUL wire cross-section single-core (rigid) AWG, max.	12
cUL wire cross-section stranded AWG, min.	22
cUL wire cross-section stranded AWG, max.	12
cUL torque	7 Nm
cUL wire material	Cu
cUL Recognized	yes

UL Recognized

UL approval	UL 1059
UL Usegroup B: rated voltage	600 V
UL Usegroup B: rated current	15 A
UL Usegroup C: rated voltage	600 V
UL Usegroup C: rated current	15 A
UL wire cross-section single-core (rigid) AWG, min.	22
UL wire cross-section single-core (rigid) AWG, max.	12
UL wire cross-section stranded AWG, min.	22
UL wire cross-section stranded AWG, max.	12
UL torque	7 Lb In
UL wire material	Cu
UL factory wiring	yes
UL field wiring	yes
UL Recognized	yes

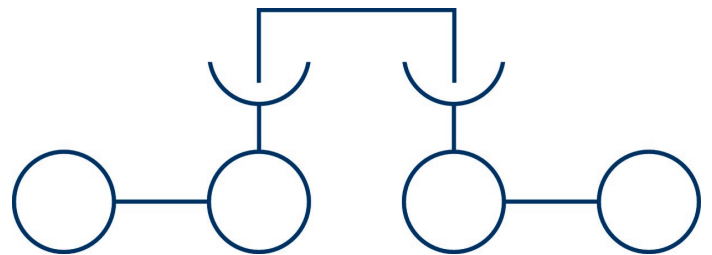
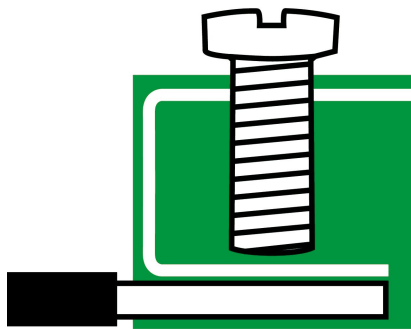
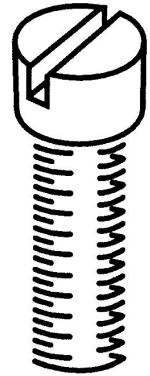
1395.2

TRK 1,5/STB/DS BG

Media

CRA[®] US

M3



1395.2

TRK 1,5/STB/DS BG

Accessories

1395.2

TRK 1,5/STB/DS BG

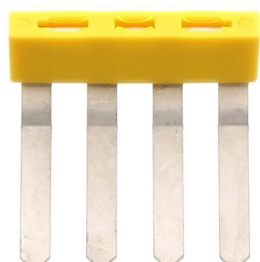
Insulated external cross-connector



External insulated cross-connector, No. of poles: 3, Mounting type: Plug in, Width: 16.9 mm, Rated current: 27 A; Colour: Yellow

General order data

Product number:	Article name	GTIN (EAN)	Packaging unit
2065.0	AQI 3/6/17 YE	4044211048716	500 ST



External insulated cross-connector, No. of poles: 4, Mounting type: Plug in, Width: 23 mm, Rated current: 27 A; Colour: Yellow

General order data

Product number:	Article name	GTIN (EAN)	Packaging unit
2066.0	AQI 4/6/17 YE	4044211048723	500 ST



External insulated cross-connector, No. of poles: 2, Mounting type: Plug in, Width: 10.8 mm, Rated current: 27 A; Colour: Yellow

General order data

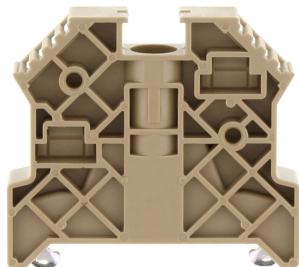
Product number:	Article name	GTIN (EAN)	Packaging unit
2064.0	AQI 2/6/17 YE	4044211048709	500 ST

Creation date 15.11.2021 09:44:39
Subject to technical changes

1395.2

TRK 1,5/STB/DS BG

End stop



End stop, Mounting type: Mounting rail TS 35/7.5, Width: 9.5 mm, Colour: Beige

General order data

Product number:	Article name	GTIN (EAN)	Packaging unit
2828.0	ES 35/K/ST BG	4044211055547	500 ST

Test plug



Test plug, Colour: Red

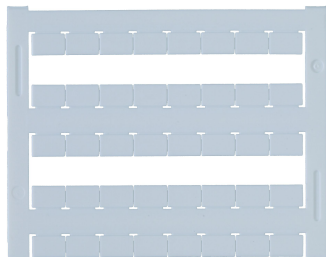
General order data

Product number:	Article name	GTIN (EAN)	Packaging unit
2007.0	PS 2,3	4044211048105	500 ST

1395.2

TRK 1,5/STB/DS BG

Quick marking



Terminal marker / Pocket Maxicard, Length: 5 mm, Width: 8 mm, Colour: White

General order data

Product number:	Article name	GTIN (EAN)	Packaging unit
9323.7	PMC SB 8/40 WH	4044211129231	500 ST

Screwdriver



Screwdriver with bare blade, Colour: Black-grey

General order data

Product number:	Article name	GTIN (EAN)	Packaging unit
1086.0	SDB 0,6x3,5	4044211014797	500 ST

1395.2

TRK 1,5/STB/DS BG

Disconnect plug



Disconnect plug with diode 1N4007, Colour: Yellow

General order data

Product number:	Article name	GTIN (EAN)	Packaging unit
1401.2	DS 2/TRK 1,5 YE	4044211044480	500 ST



Disconnect plug with diode 1N4007, Colour: Yellow

General order data

Product number:	Article name	GTIN (EAN)	Packaging unit
1402.2	DS 3/TRK 1,5 YE	4044211044497	500 ST



Disconnect plug with wire bridge, Colour: Yellow

General order data

Product number:	Article name	GTIN (EAN)	Packaging unit
1400.2	DS 1/TRK 1,5 YE	4044211044473	500 ST

Creation date 15.11.2021 09:44:39
Subject to technical changes

1395.2

TRK 1,5/STB/DS BG

Disconnect plug



Disconnect plug unpopulated, Colour: Yellow

General order data

Product number:	Article name	GTIN (EAN)	Packaging unit
1403.2	DS 4/TRK 1,5 YE	4044211044503	500 ST
