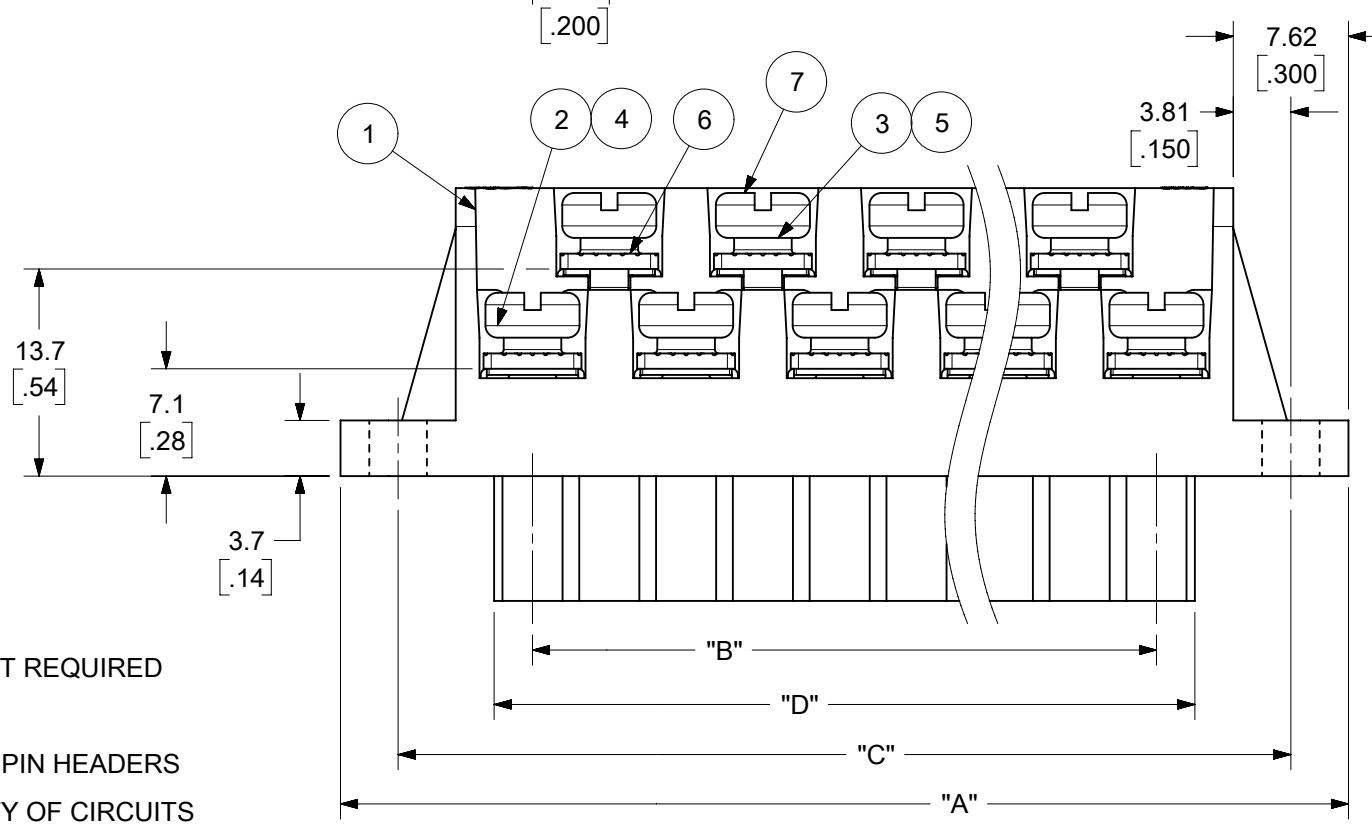


EVEN CIRCUIT, RWE ODD CIRCUIT, RWE
 AUXILIARY VIEWS
 SCALE 1:1



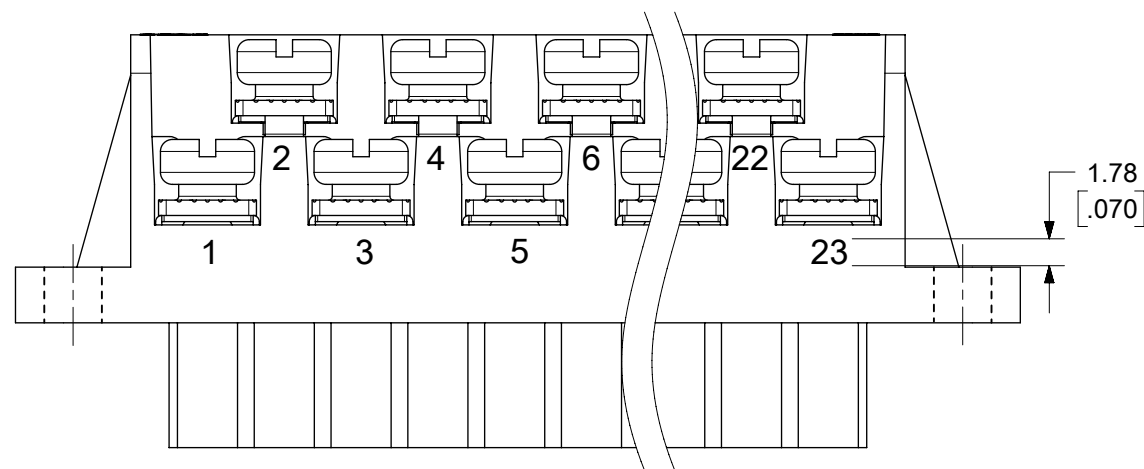
ODD CIRCUIT CONFIGURATION SHOWN

- NOTES:
1. MATERIAL: SEE TABLE
 2. FINISHES: SEE TABLE
 3. PRODUCT SPECIFICATION: NOT REQUIRED
 4. PACKAGING: NOT REQUIRED
 5. MATES WITH: MOST 5.08 [.200] PIN HEADERS
 6. "XX" REFERS TO THE QUANTITY OF CIRCUITS
 7. ROHS COMPLIANT

7	XX	XX	SCREW, M3.5 X .280	STEEL	ZINC CHROMATE
6	XX	XX	NUT, M3.5, HEX	STEEL	ZINC CHROMATE
5	XX/2	(XX-1)/2	REAR ROW TERMINAL (-G30 OPT.)	PHOS. BRONZE	SELECTIVE GOLD
4	XX/2	(XX+1)/2	FRONT ROW TERMINAL (-G30 OPT.)	PHOS. BRONZE	SELECTIVE GOLD
3	XX/2	(XX-1)/2	REAR ROW TERMINAL	PHOS. BRONZE	HOT TIN DIP
2	XX/2	(XX+1)/2	FRONT ROW TERMINAL	PHOS. BRONZE	HOT TIN DIP
1	1	1	BARRIER	THERMOPLASTIC	BLACK
ITEM	QTY. (EVEN NO. OF CIRCUITS)	QTY. (ODD NO. OF CIRCUITS)	DESCRIPTION	MATERIAL	FINISH

FUNCTIONAL SYMBOLS						THIS DRAWING CONTAINS INFORMATION THAT IS PROPRIETARY TO MOLEX ELECTRONIC TECHNOLOGIES, LLC AND SHOULD NOT BE USED WITHOUT WRITTEN PERMISSION					
DIMENSION UNITS		SCALE		CURRENT REV DESC: MIGRATED TO ECTR/NX. REMOVED "US PATENT" TEXT FROM MODEL.							
MM/INCH		2:1									
GENERAL TOLERANCES (UNLESS SPECIFIED)						EC NO: 677615					
4 PLACES		± .005		± .01		DRWN: ABENJAMINLW		2021/08/18		5.08/.200 PLUG ASSY, RWE WITH BULKHEAD PANEL MTG. ENDS (9478XX)	
3 PLACES		± .010		± .015		CHK'D: DACHAMMER		2021/09/09			
2 PLACES		± 0.13		± .01		APPR: JFMURPHY		2022/01/04		PRODUCT CUSTOMER DRAWING	
1 PLACE		± 0.3		± .01		INITIAL REVISION:				DOCUMENT NUMBER	
0 PLACES		± .005		± .01		DRWN: CYORK		2004/01/27		SD-39940-001	
ANGULAR TOL		± 2°				APPR: pwaltz		2004/02/03		PSD 001 E	
DRAFT WHERE APPLICABLE MUST REMAIN WITHIN DIMENSIONS			THIRD ANGLE PROJECTION			DRAWING			SERIES		
			B-SIZE			39940			MATERIAL NUMBER		
						SEE SHEET-2			CUSTOMER		
						GENERAL MARKET			SHEET NUMBER		
						1 OF 2					

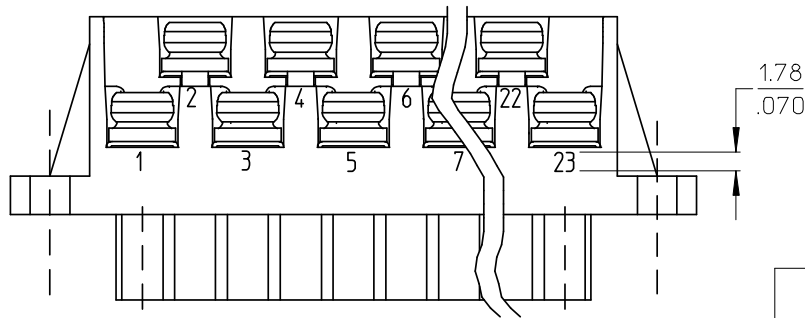
NO. OF CIRC. "XX"	"A"		"B"		"C"		"D" $\begin{matrix} +.00 \\ -.25 \end{matrix} \begin{bmatrix} +.000 \\ -.010 \end{bmatrix}$		MATERIAL NO. (STANDARD)	MATERIAL NO. (-10A OPT.)	MATERIAL NO. (-G30 OPT.)	MATERIAL NO. (-G30, -10A OPT.)
	MM	IN	MM	IN	MM	IN	MM	IN				
03	35.6	[1.40]	10.2	[.40]	27.9	[1.10]	15.2	[.60]	399400603	399401603		
04	40.6	[1.60]	15.2	[.60]	33.0	[1.30]	20.3	[.80]	399400604	399401604		
05	45.7	[1.80]	20.3	[.80]	38.1	[1.50]	25.4	[1.00]	399400605	399401605		
06	50.8	[2.00]	25.4	[1.00]	43.2	[1.70]	30.5	[1.20]	399400606	399401606		
07	55.9	[2.20]	30.5	[1.20]	48.3	[1.90]	35.6	[1.40]	399400607	399401607		
08	61.0	[2.40]	35.6	[1.40]	53.3	[2.10]	40.6	[1.60]	399400608	399401608		399490018
09	66.0	[2.60]	40.6	[1.60]	58.4	[2.30]	45.7	[1.80]	399400609	399401609		
10	71.1	[2.80]	45.7	[1.80]	63.5	[2.50]	50.8	[2.00]	399400610	399401610		
11	76.2	[3.00]	50.8	[2.00]	68.6	[2.70]	55.9	[2.20]	399400611	399401611		
12	81.3	[3.20]	55.9	[2.20]	73.7	[2.90]	61.0	[2.40]	399400612	399401612		
13	86.4	[3.40]	61.0	[2.40]	78.7	[3.10]	66.0	[2.60]	399400613	399401613		
14	91.4	[3.60]	66.0	[2.60]	83.8	[3.30]	71.1	[2.80]	399400614	399401614		
15	96.5	[3.80]	71.1	[2.80]	88.9	[3.50]	76.2	[3.00]	399400615	399401615		
16	101.6	[4.00]	76.2	[3.00]	94.0	[3.70]	81.3	[3.20]	399400616	399401616		
17	106.7	[4.20]	81.3	[3.20]	99.1	[3.90]	86.4	[3.40]	399400617	399401617		
18	111.8	[4.40]	86.4	[3.40]	104.1	[4.10]	91.4	[3.60]	399400618	399401618		
19	116.8	[4.60]	91.4	[3.60]	109.2	[4.30]	96.5	[3.80]	399400619	399401619		
20	121.9	[4.80]	96.5	[3.80]	114.3	[4.50]	101.6	[4.00]	399400620	399401620		
21	127.0	[5.00]	101.6	[4.00]	119.4	[4.70]	106.7	[4.20]	399400621	399401621		
22	132.1	[5.20]	106.7	[4.20]	124.5	[4.90]	111.8	[4.40]	399400622	399401622		
23	137.2	[5.40]	111.8	[4.40]	129.5	[5.10]	116.8	[4.60]	399400623	399401623		
24	142.2	[5.60]	116.8	[4.60]	134.6	[5.30]	121.9	[4.80]	399400624	399401624		



**OPTIONAL
10A IMPRINTING**
(ODD CIRCUIT CONFIGURATION SHOWN)

FUNCTIONAL SYMBOLS												THIS DRAWING CONTAINS INFORMATION THAT IS PROPRIETARY TO MOLEX ELECTRONIC TECHNOLOGIES, LLC AND SHOULD NOT BE USED WITHOUT WRITTEN PERMISSION											
DIMENSION UNITS				SCALE				CURRENT REV DESC: MIGRATED TO ECTR/NX. REMOVED "US PATENT" TEXT FROM MODEL.															
MM/INCH				2:1																			
GENERAL TOLERANCES (UNLESS SPECIFIED)												EC NO: 677615 DRWN: ABENJAMINLW 2021/08/18 CHK'D: DACHAMMER 2021/09/09 APPR: JFMURPHY 2022/01/04											
		MM		INCH																			
4 PLACES		± .005		± .005																			
3 PLACES		± .01		± .01																			
2 PLACES		± .013		± .01																			
1 PLACE		± .03		± .01																			
0 PLACES		± .05		± .01																			
ANGULAR TOL				± 2°				INITIAL REVISION:				DOCUMENT NUMBER											
								DRWN: CYORK 2004/01/27				SD-39940-001											
								APPR: pwaltz 2004/02/03				PSD		001		E							
DRAFT WHERE APPLICABLE MUST REMAIN WITHIN DIMENSIONS				THIRD ANGLE PROJECTION				DRAWING		SERIES		MATERIAL NUMBER		CUSTOMER		SHEET NUMBER							
								B-SIZE		39940		SEE CHART		GENERAL MARKET		2 OF 2							

MATERIAL NO.	MATERIAL NO. (-10A OPT.)	MATERIAL NO. (-G30 OPT.)	MATERIAL NO. (-G30,-10A OPT.)	NO. OF CIRC. "XX"	"A"	"B"	"C"	"D" ^{+0.00} _{-0.25} [^{+0.000} _{-0.010}]
399400603	399401603			03	35.6 [1.40]	10.2 [40]	27.9 [1.10]	15.2 [60]
399400604	399401604			04	40.6 [1.60]	15.2 [60]	33.0 [1.30]	20.3 [80]
399400605	399401605			05	45.7 [1.80]	20.3 [80]	38.1 [1.50]	25.4 [1.00]
399400606	399401606			06	50.8 [2.00]	25.4 [1.00]	43.2 [1.70]	30.5 [1.20]
399400607	399401607			07	55.9 [2.20]	30.5 [1.20]	48.3 [1.90]	35.6 [1.40]
399400608	399401608		399490018	08	61.0 [2.40]	35.6 [1.40]	53.3 [2.10]	40.6 [1.60]
399400609	399401609			09	66.0 [2.60]	40.6 [1.60]	58.4 [2.30]	45.7 [1.80]
399400610	399401610			10	71.1 [2.80]	45.7 [1.80]	63.5 [2.50]	50.8 [2.00]
399400611	399401611			11	76.2 [3.00]	50.8 [2.00]	68.6 [2.70]	55.9 [2.20]
399400612	399401612			12	81.3 [3.20]	55.9 [2.20]	73.7 [2.90]	61.0 [2.40]
399400613	399401613			13	86.4 [3.40]	61.0 [2.40]	78.7 [3.10]	66.0 [2.60]
399400614	399401614			14	91.4 [3.60]	66.0 [2.60]	83.8 [3.30]	71.1 [2.80]
399400615	399401615			15	96.5 [3.80]	71.1 [2.80]	88.9 [3.50]	76.2 [3.00]
399400616	399401616			16	101.6 [4.00]	76.2 [3.00]	94.0 [3.70]	81.3 [3.20]
399400617	399401617			17	106.7 [4.20]	81.3 [3.20]	99.1 [3.90]	86.4 [3.40]
399400618	399401618			18	111.8 [4.40]	86.4 [3.40]	104.1 [4.10]	91.4 [3.60]
399400619	399401619			19	116.8 [4.60]	91.4 [3.60]	109.2 [4.30]	96.5 [3.80]
399400620	399401620			20	121.9 [4.80]	96.5 [3.80]	114.3 [4.50]	101.6 [4.00]
399400621	399401621			21	127.0 [5.00]	101.6 [4.00]	119.4 [4.70]	106.7 [4.20]
399400622	399401622			22	132.1 [5.20]	106.7 [4.20]	124.5 [4.90]	111.8 [4.40]
399400623	399401623			23	137.2 [5.40]	111.8 [4.40]	129.5 [5.10]	116.8 [4.60]
399400624	399401624			24	142.2 [5.60]	116.8 [4.60]	134.6 [5.30]	121.9 [4.80]



OPTIONAL
10A IMPRINTING
(ODD CIRCUIT CONFIGURATION SHOWN)

SEE SHEET ONE EC NO: WNA2008-0391 DRWN: JENCINAS 2008/07/01 CHKD: CYORK 2008/07/02 APPR: JMACNEIL 2008/07/07	QUALITY SYMBOLS ▽=0 ▽=0	GENERAL TOLERANCES (UNLESS SPECIFIED)		DIMENSION STYLE	SCALE	DESIGN UNITS	THIRD ANGLE PROJECTION
				MM/IN	2:1	INCH	
				DRAWN BY	DATE	TITLE	
				CHECKED BY	DATE	5.08/200 PLUG ASSY, RWE WITH BULKHEAD PANEL MTG. ENDS (9478XX)	
		4 PLACES ± --- ± --- 3 PLACES ± --- ± .005 2 PLACES ± 0.13 ± .01 1 PLACE ± 0.3 ± --- ANGULAR ± 2 °		APPROVED BY	DATE	MOLEX MOLEX INCORPORATED	
		DRAFT WHERE APPLICABLE MUST REMAIN WITHIN DIMENSIONS		MATERIAL NO.	2003/03/07	DOCUMENT NO.	SHEET NO.
				SEE CHART	2003/03/10	SD-39940-001	2 OF 2
		THIS DRAWING CONTAINS INFORMATION THAT IS PROPRIETARY TO MOLEX INCORPORATED AND SHOULD NOT BE USED WITHOUT WRITTEN PERMISSION					