

ITEM	PART#	DESCRIPTION	QTY	UOM
A	1722563104	ULTRA-FIT HSG SR 4ckt Bk	1	PC
B	1722643004	ULTRA-FIT TPA 4ckt Bk	1	PC
C	1722537023	ULTRA-FIT CRIMP TERM 16-18 TIN Pre-P	4	PC
D	--	PAPER PRINTED PAPER WHITE	1	PC

FROM	TO	DESCRIPTION	COLOR
A1	--	1X16AWG DISC SR-PVC BK UL1061 HKUP	BLACK
A2	--	1X16AWG DISC SR-PVC BK UL1061 HKUP	BLACK
A3	--	1X16AWG DISC SR-PVC BK UL1061 HKUP	BLACK
A4	--	1X16AWG DISC SR-PVC BK UL1061 HKUP	BLACK

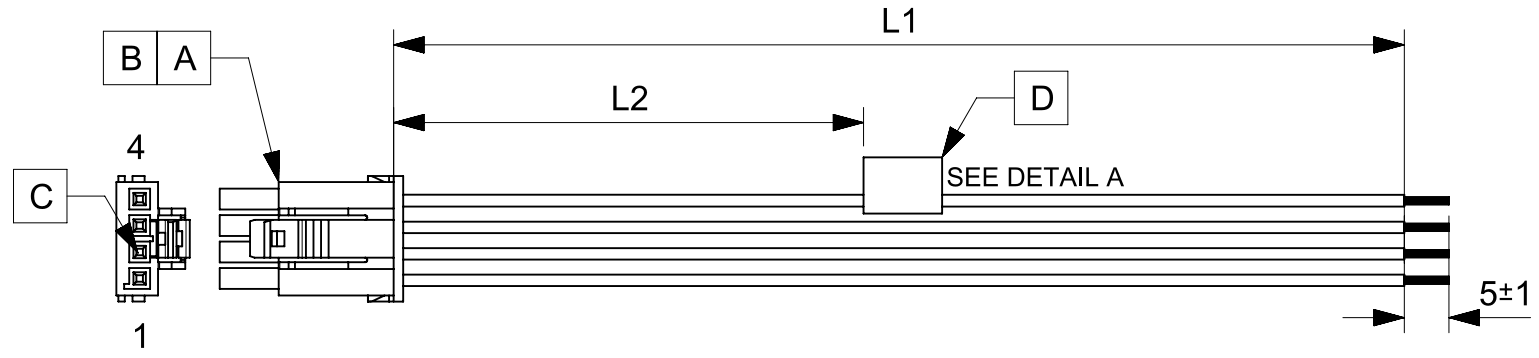


TABLE			
PART NUMBER	L1	L2	TITLE
2174661041	150±8	63 REF	ULTRA-FIT SR R-S 4CKT 150MM DISC Sn
2174661042	300±10	138 REF	ULTRA-FIT SR R-S 4CKT 300MM DISC Sn
2174661043	600±10	288 REF	ULTRA-FIT SR R-S 4CKT 600MM DISC Sn

**NOTES**

1. Connector view shown is from mating side.
2. Free ends must be stripped, twisted & tinned. The length of tinning is 5±1mm. Tinning dia must be 1.9mm Max.
3. Label text must be 2mm max. in height with Arial font.
4. Label must be wrapped in Flag type on a single cable.

MOLEX P/N  
MOLEX  
BATCH WK/YR  
**DETAIL A**

REVISION			
DATE	REV	DESCRIPTION	CHANGER
15/01/2021	A	INITIAL RELEASE	ARAJU

FUNCTIONAL SYMBOLS $\frac{F}{A} = 0$ $\frac{F}{E} = 0$ $\frac{F}{P} = 0$ DIVISIONAL SYMBOLS	THIS DRAWING CONTAINS INFORMATION THAT IS PROPRIETARY TO MOLEX ELECTRONIC TECHNOLOGIES, LLC AND SHOULD NOT BE USED WITHOUT WRITTEN PERMISSION		CURRENT REV DESC:		  SEE TABLE  PRODUCT CUSTOMER DRAWING
	DIMENSION UNITS	SCALE	EC NO: 653686		
	mm	NTS	DRWN: ARAJU 2020/11/16		
	GENERAL TOLERANCES (UNLESS SPECIFIED)		CHK'D: RDESAI01 2021/01/22		
ANGULAR TOL ± °		APPR: RDESAI01 2021/01/22		DOCUMENT NUMBER	
4 PLACES ±	INITIAL REVISION:		2174661041		DOC TYPE
3 PLACES ±	DRWN: ARAJU 2020/11/16		PSD		DOC PART
2 PLACES ±	APPR: RDESAI01 2021/01/22		A		REVISION
1 PLACE ±	DRAFT WHERE APPLICABLE MUST REMAIN WITHIN DIMENSIONS		SEE TABLE		GENERAL MARKET
0 PLACES ±	THIRD ANGLE PROJECTION	DRAWING	SERIES	MATERIAL NUMBER	CUSTOMER
		A4-SIZE	217466	SEE TABLE	GENERAL MARKET
					SHEET NUMBER
					1 OF 1

DOCUMENT STATUS	P1	RELEASE DATE	2021/01/22	06:05:24
-----------------	----	--------------	------------	----------