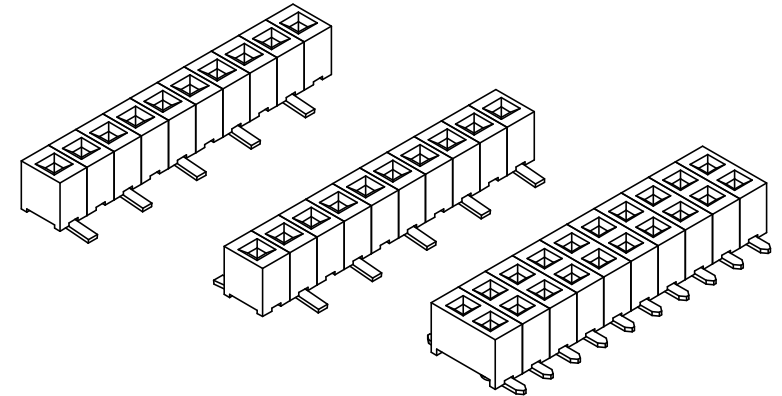
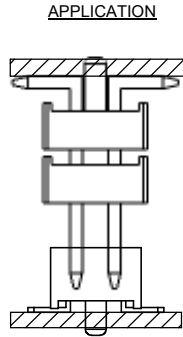
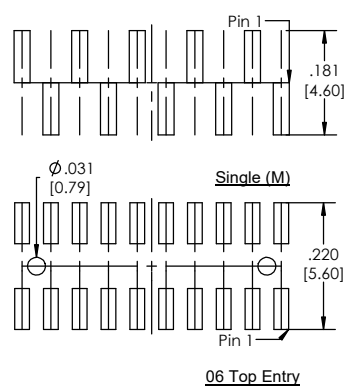
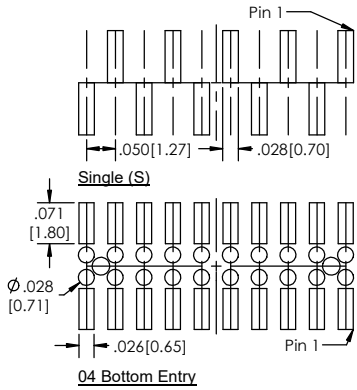


Recommended P.C. Board Layout
SCALE 6:1



LSSH-5 **(A)** - **(B)** - **(C)** - **(D)** - **(E)** - **(F)** - **(G)** - **(H)** - **(I)** - **(J)**

- A. Pins Per Row
 - 1 through 40
- B. Row Specification
 - S= Single Row
 - D= Double Row
- C. Surface Mount
 - 04 Bottom Entry
 - 06 Top Entry
- D. Plating Options
 - See Plating Options below
- E. Footprint Orientation (Single Row)
 - S= Pin 1 right
 - M= Pin 1 left
- F. Polarized Position
 - Leave blank if not needed
 - If required, specify empty pin position
 - e.g. 012 for Pin 12
- G. Packing Information
 - TR= Tape and Reel
 - TB= Tube
- H. Cap Option
 - P= Pick and Place Cap
 - O= No Cap
- I. Alignment Pin Option
 - Leave blank if not needed
 - Ap= With
- J. Lead Free

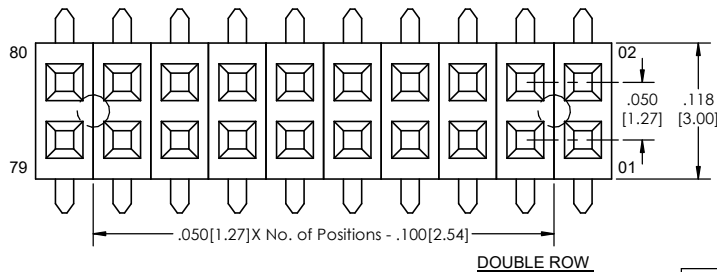
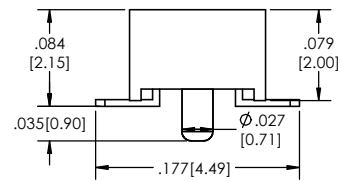
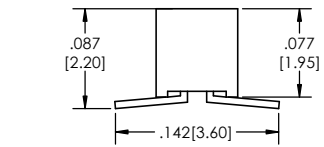
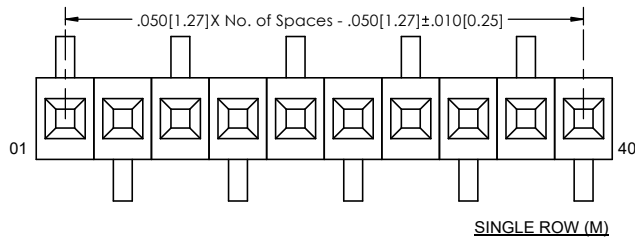
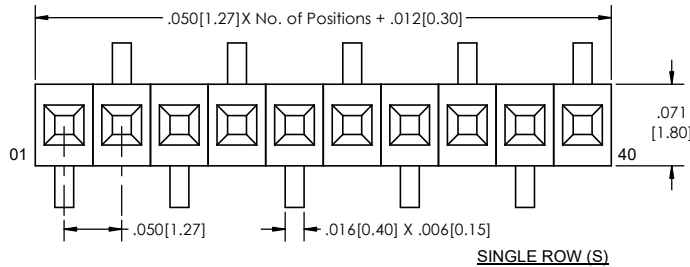
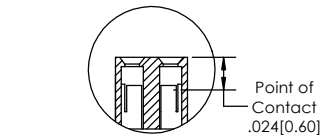
Plating options	
G	10µ Gold on Contact Area/ Flash on Tail
F	Gold Flash over Entire Pin
H	30µ Gold on Contact Area/ Matte Tin on Tail

Specifications:
 Current Rating: 1.0 Ampere
 Insulation Resistance: 1000M Ohms Min.
 Dielectric Withstanding: 300V AC
 Contact Resistance: 20M Ohms Max.
 Operation Temperature: -40°C to +125°C
 Max. Process Temperature
 Peak: 260°C up to 20 secs.
 Process: 230°C up to 60 secs.
 Wave: 260°C up to 6 secs.
 Manual Solder: 350°C up to 5 secs.

Materials:
 Contact Material: Phosphor Bronze
 Insulator Material: High Temperature LCP Plastic
 Plating: Au over Ni

Tails may be clipped to achieve specific dimensions.

Products cut to specific sizes are uncancellable/ nonreturnable.
 Parts are subject to change without notice.



PROPRIETARY AND CONFIDENTIAL
 THE INFORMATION CONTAINED IN THIS DRAWING IS THE SOLE PROPERTY OF Major League Electronics. ANY REPRODUCTION IN PART OR AS A WHOLE WITHOUT THE WRITTEN PERMISSION OF Major League Electronics IS PROHIBITED.

UNLESS OTHERWISE SPECIFIED:		NAME		DATE	
DIMENSIONS ARE IN INCHES		DRAWN	EOW	04/13/16	
TOLERANCES:		CHECKED	GWE	04/13/16	
ONE DECIMALS ±.100		ENG APPR.			
THREE DECIMALS ±.002		MFG APPR.			
FOUR DECIMALS ±.002		ADDRESS:	2533 Centennial Blvd. Jeffersonville, IN 47130 Phone: 812-670-4174 Fax: 812-670-4175 E-Mail: mle@mlelectronics.com		
NEXT ASSY	USED ON	FINISH	TITLE: LSSH-5 SERIES		
APPLICATION	DO NOT SCALE DRAWING		SIZE	DWG. NO.	REV
			C		G
			SCALE 12:1		SHEET 1 OF 1

