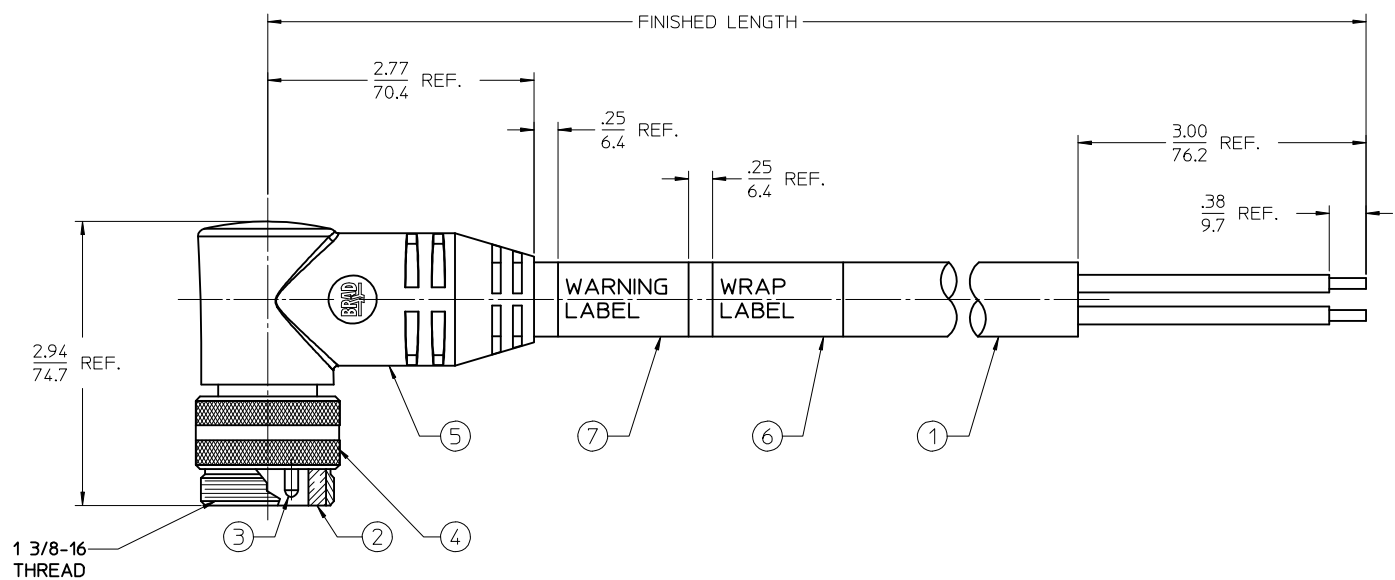
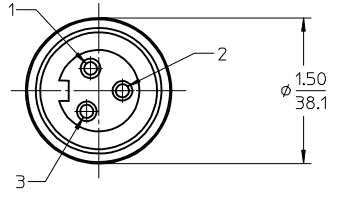


| | |
|---|--------------|
| 1 | BLACK |
| 2 | GREEN/YELLOW |
| 3 | WHITE |

WIRING DIAGRAM



1 3/8-16
THREAD

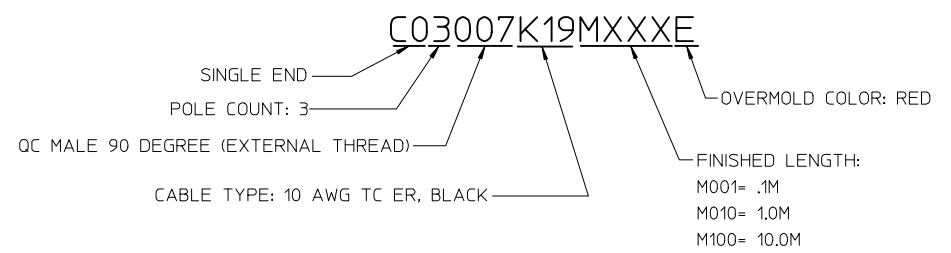


FEMALE FACE VIEW

NOTES:

- 1) MATERIAL: SEE TABLE
- 2) FINISHES: SEE TABLE
- 3) WRAP LABEL IS MARKED WITH P/N, DATE CODE VOLTAGE & AMPERAGE
- 4) MATES WITH: QUICK CHANGE 3 POLE RECEPTACLE
- 5) ELECTRICAL DATA:
10AWG UL TYPE: TC-ER STRANDED CABLE
MAX VOLTAGE: 600V
MAX CURRENT: 32A
PROTECTION IP67 (WHEN MATED)
TEMPERATURE RANGE: -20°C TO 90°C
- 6) PACKAGING:
CABLE ASSEMBLIES ARE BAGGED SEPERATLY IN POLY BAGS WITH BAR CODE LABEL ATTACHED TO OUTSIDE OF BAG.
- 7) ASSEMBLY IS RoHS COMPLIANT

PART NUMBER LEGEND



| | | | | |
|------|------|--------------------------------|------------|---------------|
| 7 | 1 | WARNING LABEL | VINYL | ORANGE/BLACK |
| 6 | 1 | WRAP LABEL | VINYL | BLACK/YELLOW |
| 5 | 1 | OVERMOLD | PVC | RED |
| 4 | 1 | COUPLING | ALUMINUM | CLEAR ANODIZE |
| 3 | 3 | CONTACT PIN | Cu ALLOY | GOLD PLATED |
| 2 | 1 | INSERT | PVC | BLACK |
| 1 | 1 | CABLE, 10/3 TC-ER (SEE NOTE 5) | TPE JACKET | BLACK |
| ITEM | QTY. | DESCRIPTION | MATERIAL | FINISH |

| | | |
|----------------|---------------------|------------|
| RELEASED | EC NO: IPGZ016-0830 | 2015/12/08 |
| DRWNR:STONE | CHKD: | 2016/02/29 |
| APPR: BWOODMAN | DESCRIPTION | |
| REV | | |

| | | |
|--|--------|---------|
| QUALITY SYMBOLS | ▽=0 | |
| ▽=0 | | |
| ▽=0 | | |
| GENERAL TOLERANCES (UNLESS SPECIFIED) | | |
| | mm | |
| | INCH | |
| 4 PLACES | ± .005 | ± .0005 |
| 3 PLACES | ± .005 | ± .0005 |
| 2 PLACES | ± .005 | ± .001 |
| 1 PLACE | ± 0.3 | ± .005 |
| 0 PLACE | ± .005 | ± .005 |
| ANGULAR ± 1° | | |
| DRAFT WHERE APPLICABLE MUST REMAIN WITHIN DIMENSIONS | | |

| | |
|-----------------|------------|
| DIMENSION STYLE | |
| IN/MM | |
| DRAWN BY | DATE |
| RSTONE | 2015/12/08 |
| CHECKED BY | DATE |
| APPROVED BY | DATE |
| BWOODMAN | 2016/02/29 |
| MATERIAL NO. | |
| | |

| | | |
|---|--------------|------------------------|
| SCALE | DESIGN UNITS | THIRD ANGLE PROJECTION |
| 1:1 | INCH | |
| TITLE | | |
| QUICK CHANGE CORD ASSY | | |
| MALE 90 DEG, RED | | |
| 10AWG TPE CABLE | | |
| molex | | |
| DOCUMENT NO. | SHEET NO. | |
| SD-130063-094 | 1 OF 1 | |
| THIS DRAWING CONTAINS INFORMATION THAT IS PROPRIETARY TO MOLEX INCORPORATED AND SHOULD NOT BE USED WITHOUT WRITTEN PERMISSION | | |