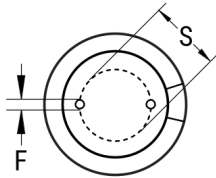


SIDE VIEW



TERMINAL END VIEW



Click [here](#) for the 3D model.

Dimensions	
D	16mm +/-0.5mm
L	32mm +2.0mm
S	7.5mm +/-0.5mm
LL Negative	15mm MIN
LL Positive	20mm MIN
F	0.8mm NOM

Packaging Specifications	
Packaging	Bulk, Bag
Packaging Quantity	800

General Information	
Series	ESX
Dielectric	Aluminum Electrolytic
Description	Single Ended Aluminum Electrolytic
RoHS	Yes
Lead	Wire Leads
AEC-Q200	No

Specifications	
Capacitance	1,000 uF
Capacitance Tolerance	20%
Voltage DC	50 VDC, 63 VDC (Surge)
Temperature Range	-40/+105°C
Rated Temperature	105°C
Life	5000 Hrs
Dissipation Factor	10%
Resistance	0.05 Ohms (ESR, 100kHz 25C), 0.05 Ohms (Z, 100kHz 20C)
Ripple Current	2120 mAmps (100kHz 105C)
Leakage Current	630 uA (2min 20°C)
Impedance Ratio at -25C	2
Impedance Ratio at -40C	4