

## 1 Products affected

Product hierarchy no. *			Part no.	SBU	Type / Description	Customer part no.
SBU / PG	PGU	Type				
02	006	016	0000001509	See list below	Power Entry Modules with Filters	KFA

\*SBU (2-digit) / PG (3-digit) / PGU (3-digit) / Type (10-digit)

### List of part numbers affected

4301.5001	4301.5002	4301.5003	4301.5003.01	4301.5004	4301.5005	4301.5006.01	4301.5006.02
4301.5007.01	4301.5011	4301.5011.01	4301.5011.02	4301.5012	4301.5013	4301.5014	4301.5015
4301.5041	4301.5042	4301.5043	4301.5044	4301.5045	4301.5051	4301.5052	4301.5053
4301.5054	4301.5055	4301.5200	4301.5201	4301.5202	4301.5203	4301.5204	4301.5205
4301.5206	4301.5207	4301.5208	4301.5209	4301.5214	4301.5217	4301.5240	4301.5241
4301.5243	4301.5244	4301.5245	4301.5246	4301.5247	4301.5249	4301.5603.01	4301.5605.01
4301.5605.02	4301.5702.01	4301.5703.01	4301.6001	4301.6002	4301.6003	4301.6004	4301.6005
4301.6005.01	4301.6011	4301.6012	4301.6013	4301.6013.01	4301.6014	4301.6015	4301.6201
4301.6203	4301.6205	4301.6206	4301.6207	4301.6209	4301.6304.01	4301.6307	4301.7001
4301.7002	4301.7003	4301.7004	4301.7005	4301.7011	4301.7012	4301.7012.01	4301.7012.02
4301.7013	4301.7014	4301.7015	4301.7200	4301.7201	4301.7202	4301.7203	4301.7203.01
4301.7204	4301.7205	4301.7206	4301.7207	4301.7208	4301.7209	4301.7301	4301.7301.01
4301.7301.02	4301.7311	4301.7507.01	4301.7600.03	4301.8046	4301.8047		

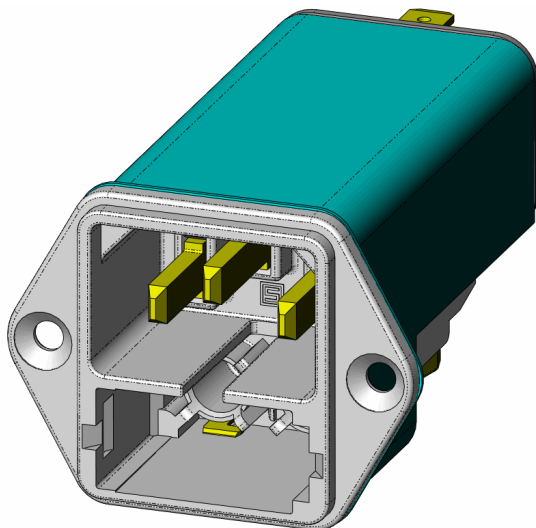
## 2 Type of change

Product improvement  
Integration of V-Lock cord retention function  
Enlarging of the fuse drawer slot

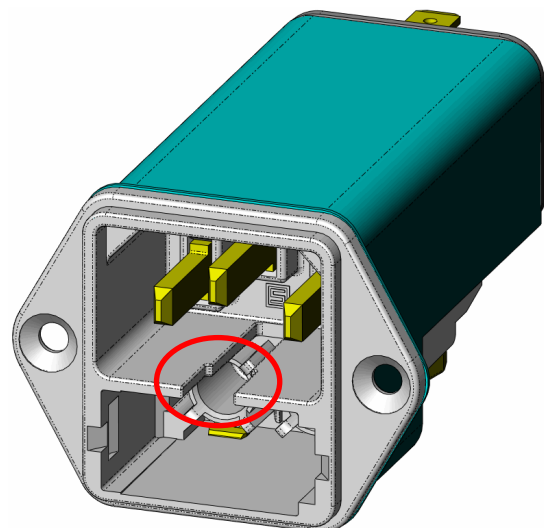
## 3 Detailed description of change

Fusedrawer slot enlarged.

Old



New



## 4 Reason of change

Implementation of V-Lock cord retention function.  
Precondition: new fusedrawer required (see PCN 0118.2133).

KFA					0118.2139	
creation date	created by	release date	released by	notification no.	revision	page
2012-11-07	schaidro	2013-06-24	schaidro	24895	-	1 of 2

## 5 Release date

The change will be rolled-out individually by all part numbers affected starting ww 26/2013 and last approx. 6 months.

## 6 Impact of change and recommended action

Form: New form is fully backwards compatible (can be used with old fusedrawer, see PCN 0118.2133).  
Fit: n/a  
Function: The new expanded slot allows applying V-Lock cord sets for cord retaining (new fuse drawer necessary).  
Production Site: n/a  
Product Label: n/a

## 7 Reference Documents / Attachments

Kind of document	Document number	Remarks
<a href="#">PCN fusedrawer 2</a>	0118.2133	
<a href="#">Data sheet Fusedrawer 2</a>		
<a href="#">Data sheet KFA</a>		

KFA					0118.2139	
creation date	created by	release date	released by	notification no.	revision	page
2012-11-07	schaidro	2013-06-24	schaidro	24895	-	2 of 2