

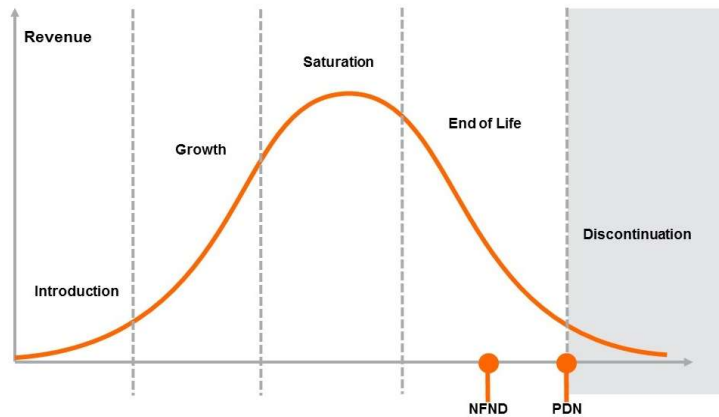
Light is OSRAM

Product Or Individual Q-Code Discontinuation (acc. JEDEC J-STD-048)

03 August 2020

OS-PDN-2020-049

| | |
|----------------|------------------|
| Last order: | 01 February 2021 |
| Last delivery: | 01 August 2021 |



Please direct your feedback to your local Sales office.

| DISCONTINUED | | | | NEW (REPLACEMENT) | | |
|--------------|---------------|-----------------------|--------------------------------------|-------------------|-------------------------|--------|
| Device | Ordering Code | Brand | Reason for discontinuation | Device | Datasheet Ordering Code | Brand |
| LT G6SP | Q65110A4673 | Advanced Power TOPLED | Upgraded successor product available | KT DMLN31.13 | Q65112A3520 | SYNIOS |
| LT G6SP | Q65110A5874 | Advanced Power TOPLED | Upgraded successor product available | KT DMLN31.13 | Q65112A3520 | SYNIOS |
| LT G6SP | Q65110A8347 | Advanced Power TOPLED | Upgraded successor product available | KT DMLN31.13 | Q65112A3520 | SYNIOS |
| LT G6SP | Q65110A8556 | Advanced Power TOPLED | Upgraded successor product available | KT DMLN31.13 | Q65112A3520 | SYNIOS |
| LT G6SP | Q65111A8775 | Advanced Power TOPLED | Upgraded successor product available | KT DMLN31.13 | Q65112A3520 | SYNIOS |
| LT G6SP | Q65112A0832 | Advanced Power TOPLED | Upgraded successor product available | KT DMLN31.13 | Q65112A3520 | SYNIOS |
| LT G6SP | Q65112A6399 | Advanced Power TOPLED | Upgraded successor product available | KT DMLN31.13 | Q65112A3520 | SYNIOS |