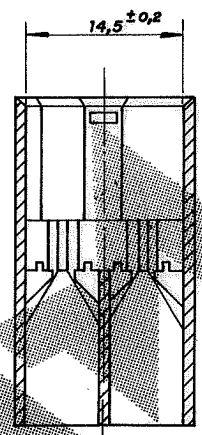
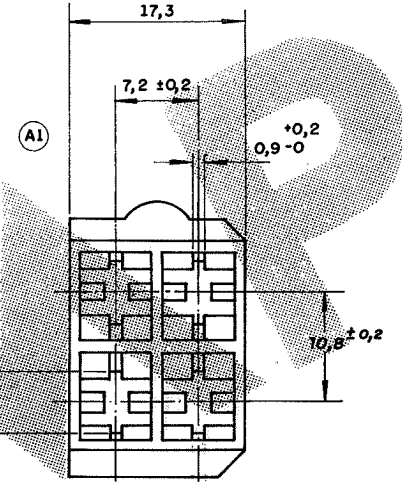
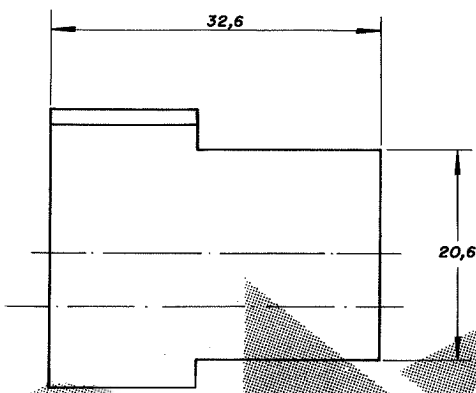
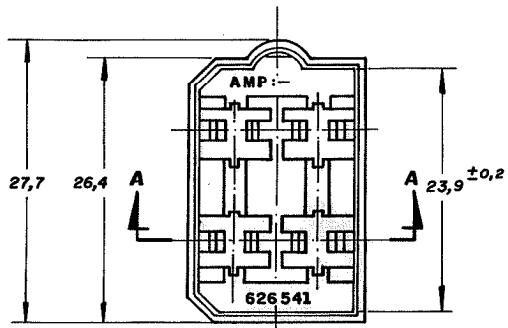


C 626 541

DO NOT SCALE
DIMENSIONS IN

METRIC



SECÇÃO A: A

① RAW MATERIAL ACCORDING TO IEC 60335-1, GWEPT 750°C WITHOUT FLAME.
② OBSOLETE PARTS; OBSOLETE CIS STREAMLINING PER D.RENAUD/D.SINISI

OBSOLETE

NATURAL	PA 6.6 V-0	2	-0
LARANJA		2	-7
MARROM		2	-6
CINZA		2	-9
PRETO		2	-4
AMARELO		2	-3
AZUL		2	-2
VERDE		2	-1
VERMELHO LARANJA	PA 6.6	2	-626 541 - 0
MARROM			-9
CINZA			-8
PRETO			-7
AMARELO			-6
AZUL			-5
VERDE			-4
VERMELHO TINGIDO			-3
NATURAL	POLIAMIDA 6.6		-2
			-1

OTHER TREATMENT	FINISH	MATERIAL	PART NUMBER
CUSTOMER DWG for REFERENCE ONLY		THIS DRAWING IS UNPUBLISHED RELEASED FOR PUBLICATION © COPYRIGHT 19 BY AMP DO BRASIL LTDA S.P. ALL INTERNATIONAL RIGHTS RESERVED AMP PRODUCTS MAY BE COVERED BY U.S. AND FOREIGN PATENTS AND/OR PATENTS PENDING.	
TOLERANCES UNLESS OTHERWISE STATED DEC. ± 0,4 ANGLES ± 1°		INS. DIA. RANGE ///	WIRE RANGE ///
		SCALE ///	
C REVISED PER ECN 23-193366 WLS BHC 10JAN23 DR. Paulo S.B. Agosto 18-88		AMP AMP do BRASIL LTDA. São Paulo, Brasil	
B2 REVISED PER ECN-22-135694 WLS EW 21JAN2022		DESCRIPTION 4 WAY FASTIN-ON TAB HOUSING	
B1 ECO-09-026444 KK AEG NOV09		CHK Helio Agost. 21-88	
B REVISED LE 10.0081/05 H.C. H.C. 05 Apr 05		DE	
A1 REVISADO Briz 6-2-92		APP.	
A REDESENHADO P.S.B. 78-88		APP.	
ISS	REVISION RECORD	DR	CHK DATE
A3		DWG NO C 626 541	
		SHEET 1 of 1	