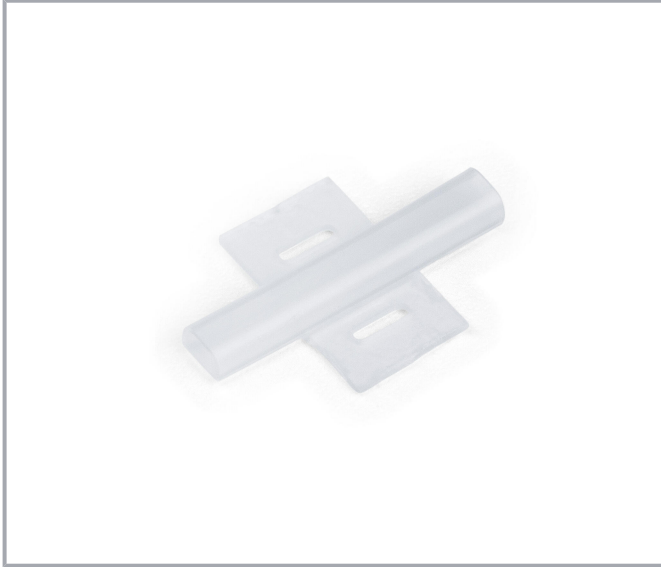


Data sheet | Item number: 211-829

Nozzles; Length: 23 mm; For the use of 211-821; halogen-free; transparent

www.wago.com/211-829



Data

Technical data

Delivery form	Component
Properties	for one 211-821 marker
Printing device	Smart Printer (Thermal Transfer Printer)

Physical data

Length	23 mm
Sheathed cable diameter	4 ...

Mechanical Data

Mounting type	Mounting with cable ties
---------------	--------------------------

Material Data

Color	transparent
Material	Polyurethane
Adhesive information	without adhesive

Subject to changes. Please also observe the further product documentation!

WAGO GmbH & Co. KG
Hansastr. 27
32423 Minden
Phone: +49571 887-0 | Fax: +49571 887-169
Email: info.de@wago.com | Web: www.wago.com

Do you have any questions about our products?
We are always happy to take your call at +49 (571) 887-44222.

Halogen-free	Yes
Weight	0.3 g

Environmental requirements

Ambient temperature (storage)	+5 ... +40 °C
Ambient temperature (operation)	-40 ... +80 °C
Relative humidity	40 ... 80 %

Commercial data


Product Group	2 (Terminal Block Accessories)
eCl@ss 10.0	27-40-04-01
eCl@ss 9.0	27-40-04-01
ETIM 8.0	EC001530
ETIM 7.0	EC001530
PU (SPU)	200 pcs
Packaging type	box
Country of origin	IT
GTIN	4050821675037
Customs tariff number	39269097900

Environmental Product Compliance

RoHS Compliance Status	Compliant, No Exemption
------------------------	-------------------------

Required accessories

Marking accessories

Marker		
	Item no.: 211-821 Marker; for Smart Printer; for use in nozzles; Length: 23 mm; white	www.wago.com/211-821

Downloads

Environmental Product Compliance

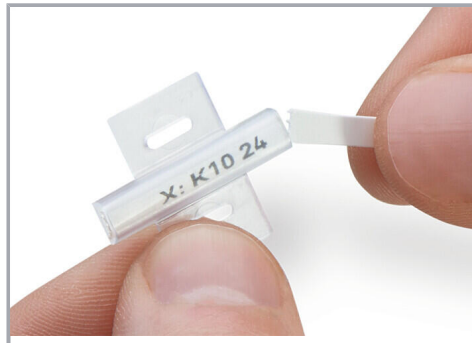
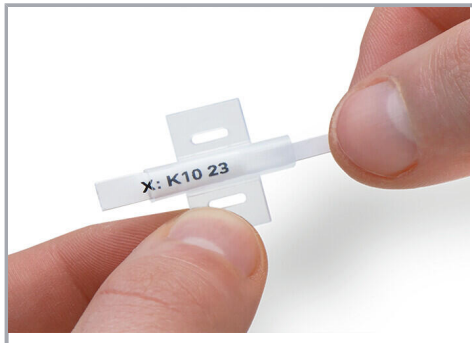
Compliance Search

Environmental Product Compliance 211-829	URL	Download
Nozzles; Length: 23 mm; For the use of 211-821; halogen-free; transparent		

Subject to changes. Please also observe the further product documentation!

Installation Notes

Application



Slide the marker through the marker slot up to the end of the sleeve.

Then remove the rest of the card by twisting it off.

Marking



Attach the marking sleeve (211-829) to individual cables or conductors via cable ties.

Subject to changes. Please also observe the further product documentation!