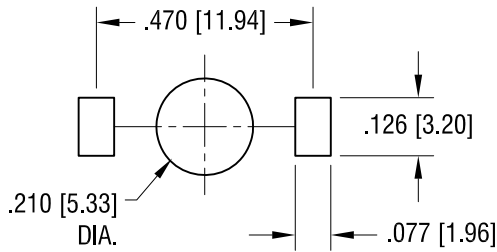
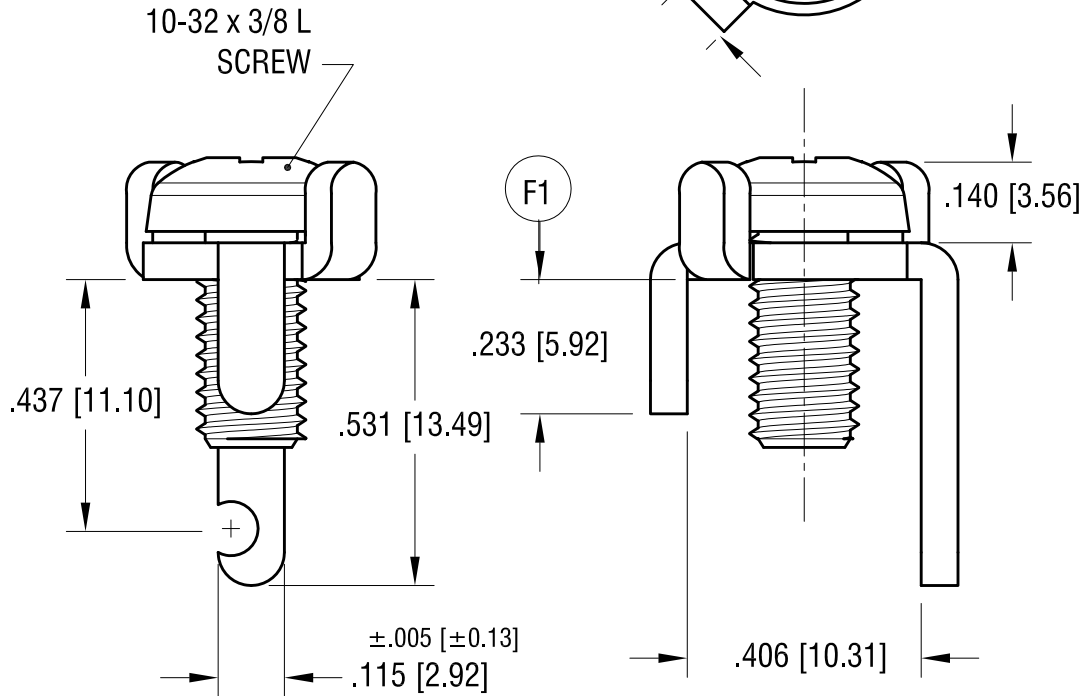
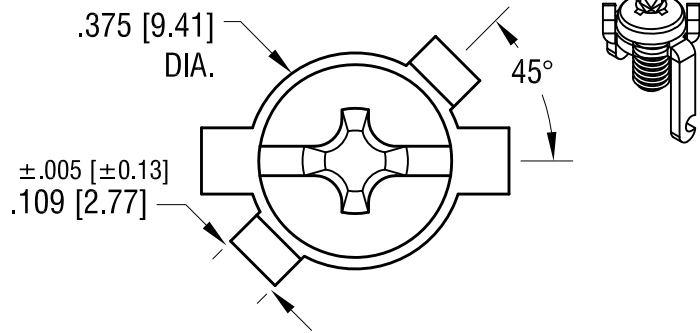


THIS DOCUMENT IS THE PROPERTY OF KEYSTONE ELECTRONICS CORP. AND SHALL NOT BE REPRODUCED, DISTRIBUTED OR USED AS A BASIS FOR MANUFACTURE WITHOUT PRIOR WRITTEN PERMISSION FROM KEYSTONE ELECTRONICS CORP.

**MOUNTING DETAIL**



**ACTUAL SIZE**



**NOTES:**

1. TERMINAL:  
MAT'L - .064 [1.63] TH'K BRASS, MATTE TIN PLATE
2. SCREW:  
MAT'L - STAINLESS STEEL

4.12.23	(F1) WAS .297±.010 CHANGE AS PER ECN 23-054	F
10.09.20	WAS COMBINATION HEAD SCREW MAT'L STEEL, NICKEL PLAT CHANGE AS PER ECN 20-084	E
7.15.09	CHANGE AS PER ECN 09-102	D
1.21.08	CHANGE AS PER ECN 08-053	C
DATE	DESCRIPTION	REV.

<b>KEYSTONE ELECTRONICS CORP.</b>			
www.keyelco.com • NEW HYDE PARK, NY 11040 • Tel (516) 328-7500			
PART NAME		SCREW TERMINAL	
MATERIAL		AS NOTED	
FINISH		AS NOTED	
TOLERANCES		INCH	[MM]
DECIMAL		± .010	[± 0.25]
ANGULAR		± 2°	
UNLESS OTHERWISE SPECIFIED			
DRN BY	BOONE	DATE	6.11.91
APP'D	RH	SCALE	3X
CODE	DWG NO.		
C	<b>1283</b>		