

| ATLANTIC VERSION TERMINATOR INTERFACE ADAPTER | PART NUMBER | REVISION | DESCRIPTION | FEED TYPE | |
|---|-------------|----------|--------------------------|--------------------------------|---------------------------|
| | 2266137-1 | B | FINE CRIMP HEIGHT ADJUST | MECHANICAL | SUPERSEDED BY 5-2151786-1 |
| | 2266137-2 | B | FINE CRIMP HEIGHT ADJUST | PNEUMATIC | SUPERSEDED BY 5-2151786-2 |
| | 2266137-5 | B | FINE CRIMP HEIGHT ADJUST | SERVO LATCH PLATE ⁴ | OBSOLETE |
| | 2266137-6 | B | NON CRIMP HEIGHT ADJUST | SERVO LATCH PLATE ⁴ | OBSOLETE |
| | 2266137-7 | B | FINE CRIMP HEIGHT ADJUST | NONE | OBSOLETE |
| | 7-2266137-7 | A | CRIMP TOOLING KIT | - | |

| APPLICATOR DATA | | |
|-----------------|----------------|------|
| CRIMP WIRE | SIZE | TYPE |
| | 3.25 mm [.128] | F |
| INSUL | 4.88 mm [.192] | O |

APPLICATOR INSTRUCTIONS 408-10389

| TERMINAL DATA: DELPHI TERMINAL DELPHI CRIMP SPECIFICATION | |
|---|---|
| TERMINAL NAME: TAXI TERM F M/P 280 SEALED | |
| WIRE STRIP LENGTH 4.80-5.60 mm [.189-.220 IN] | INSULATION DIAMETER RANGE Ø2.45-3.80 mm [.096-.150 IN] |
| TERMINAL APPLICATION SPECIFICATION DELPHI | |
| TERMINALS APPLIED | |
| TE TERMINAL | DELPHI TERMINAL |
| 286919-1 | 12129493 |
| 286919-2 | 12176388 |
| | 1572716-3 |
| | 1572716-1 |
| | 1949896-1 |
| TE SEAL | DELPHI SEAL |
| 1949807-1 | 15324982 |
| 286553-1 | 12015323 |
| 15324980 | 2.81-3.49mm |
| 12010293 | 2.81-3.49mm |
| 15324981 | 3.45-4.3mm |

| WIRE SIZE | CRIMP HEIGHT mm [INCH] | CRIMP HEIGHT REFERENCE SETTING |
|-----------|-------------------------------|--------------------------------|
| 3.00mm2 | 1.95 +/- 0.05 [.077 +/- .002] | 6.1 |
| 2.00mm2 | 1.70 +/- 0.05 [.067 +/- .002] | 8.6 |

- ¹ RECOMMENDED SPARE PARTS
- ² GREASE BEARING SURFACES LIGHTLY
- 3. LUBRICATE DAILY PER THE APPLICATOR INSTRUCTION SHEET SUPPLIED WITH THE APPLICATOR.
- ⁴ APPLICATOR SPECIFIC DATA TO BE ENTERED INTO BLANK MEMORY CHIP AT ASSEMBLY. SEE BELOW FOR PART NUMBER:
MECHANICAL FEED WITH "SMART APPLICATOR" CONVERSION: 8-2266137-4
PNEUMATIC FEED WITH "SMART APPLICATOR" CONVERSION: 8-2266137-4
SERVO FEED WITH "FINE CRIMP HEIGHT ADJUST": 8-2266137-5
SERVO FEED WITH "NON-CRIMP HEIGHT ADJUST": 8-2266137-6
- 5. ADJUSTMENT OF THE STRIPPER MAY BE REQUIRED WHEN MOVING THE APPLICATOR BETWEEN BENCH AND LEADMAKER APPLICATIONS.
- ⁶ APPLY PART NUMBER 1-23419-5 LOCTITE TO THREADS OF ITEMS 62 & 180. APPLY PART NUMBER 2-23419-6 LOCTITE TO THREADS OF ITEM 242. FOR -6 ONLY APPLY PART NUMBER 1-23419-5 LOCTITE TO THREADS OF ITEMS 37 & 180.
- ⁷ GREASE THREADS, GROOVE AND O-RING ON ITEMS 35 & 252.
- ⁸ MAGNET, ITEM 166 MUST BE ORIENTED CORRECTLY IN ORDER TO PROPERLY ACTUATE THE COUNTER.
- ⁹ CRIMP HEIGHT REFERENCE SETTING WAS THE SETTING USED WHEN THE APPLICATOR WAS QUALIFIED AT THE FACTORY. ADJUSTMENT MAY BE NECESSARY WHEN RUNNING APPLICATOR IN THE FIELD.
- ¹⁰ SPARE FEED CAM STORAGE LOCATION REFER TO INSTRUCTION SHEET FOR ADDITIONAL INFORMATION.
- ¹¹ TO CONVERT THE APPLICATOR TO A NON-CARRIER CUTTING STYLE, REMOVE ITEM 13 AND ATTACH TO THE LOCATION ON THE BACK SIDE OF THE HOUSING. REFER TO INSTRUCTION SHEET FOR ADDITIONAL INFORMATION.
- ¹² WHEN ASSEMBLING A NON CRIMP HEIGHT ADJUST APPLICATOR (-6) USE SHIMS FROM ITEM 260 TO ACHIEVE A NOMINAL SHIM HEIGHT OF 3.85.
- ¹³ THE INSULATION RANGE LISTED IS FOR THE TERMINAL. REFER TO THE CHART FOR RANGE OF SEALS LISTED ON APPLICATOR DRAWING.
- ¹⁴ APPLY TORO-SEAL IN ALLEN SOCKET TO FILL HOLE AFTER FLAT HD HAS BEEN ADJUSTED TO CORRECT HEIGHT AT QUALIFICATION. APPLY #1-23419-5 LOC-TITE TO THREADS.
- ¹⁵ THIS APPLICATOR IS SPECIFIC FOR USE IN A STRIPPER SEAL TERMINATING UNIT.

***WARNING**
ON INSTALLATION, SET WIRE DISC, ITEM 40 TO LARGEST WIRE SIZE SETTING. USE OF SETTINGS BELOW MINIMUM REQUIRED CRIMP HEIGHT SETTING WILL CAUSE DAMAGE TO CRIMP TOOLING.

| -77 | -7 | -6 | -5 | -2 | -1 | PART NO | DESCRIPTION | ITEM NO |
|-----|----|----|----|----|----|-----------|---------------------------------|---------|
| - | - | 1 | - | - | - | 2119957-2 | APPLICATOR SHIM PACK | 260 |
| - | 1 | - | 1 | 1 | 1 | 8-21084-0 | O-RING, .676 ID, .070 DIA. MAT. | 252 |
| - | - | - | - | 1 | - | 2119640-1 | PUSH ROD, AIR FEED | 250 |

ATLANTIC VERSION
Shown on sheets 1 of 4 & 2 of 4
(Pacific version shown on sheets 3 of 4 & 4 of 4)

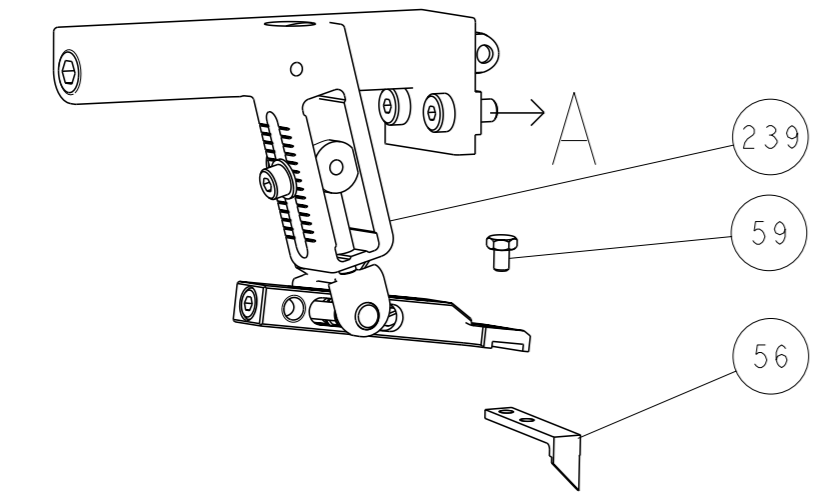
| SET UP GAUGE | LOC | DIST | REVISIONS | | | |
|--------------|-----|------|-----------|---------------|-----------|-----|
| 2119599-1 | A | 66 | # | DATE | BY | CHK |
| | | | A | RELEASED | 11DEC2013 | LG |
| | | | B | ECR-15-018711 | 29DEC2015 | KH |
| | | | B1 | ECR-18-011001 | 12JUL2018 | JAH |

| # | DATE | BY | CHK | DESCRIPTION | ITEM NO | |
|--------------|------|-----|-----|-------------|---|-----|
| - | - | - | - | 1 | 2079988-1 BUSHING, LCH5-12, MISUMI | 249 |
| - | - | - | - | 1 | 2119641-1 FEED CAM, AIR FEED | 248 |
| - | 1 | - | 1 | 1 | 2119798-1 DETENT PIN | 247 |
| - | 1 | - | 1 | 1 | 1-22279-3 SPRING, COMPRESSION | 246 |
| - | - | 1 | - | - | 2119758-1 RAM, AMP STYLE, SIDE FEED, NON-ADJ. | 245 |
| - | 1 | 1 | 1 | 1 | 2119082-9 CAM, SNAIL, INSULATION ADJUSTMENT | 244 |
| - | 1 | 1 | 1 | 1 | 2079764-1 WASHER, WAVE SPRING, CREST-TO-CREST | 243 |
| ⁶ | - | 1 | 1 | 1 | 2119083-1 RETAINER, INSULATION DIAL | 242 |
| - | 1 | 1 | 1 | 1 | 7-18023-7 SCR, SKT HD CAP M3 X 4.0 | 241 |
| - | - | 2 | 2 | - | 2168400-6 SHCS, LOW HEAD, RoHS, M5 X 16 | 240 |
| - | - | - | - | 1 | 2119580-1 MECHANICAL FEED ASSEMBLY | 239 |
| - | - | - | - | 1 | 2063440-1 AIR FEED MODULE | 238 |
| - | - | 1 | 1 | - | 2119740-2 TAG, IDENTIFICATION | 213 |
| - | - | 1 | 1 | - | 1901094-3 SPACER, FEEDER | 198 |
| ⁶ | - | 1 | 1 | 1 | 2-1752354-5 STANDOFF, HOLD-DOWN | 180 |
| - | 1 | 1 | 1 | 1 | 6-993111-6 PIN, SLOTTED SPRING 3.0 X 14.0 | 177 |
| - | 1 | 1 | 1 | 1 | 8-22280-7 SPRING, COMPRESSION | 176 |
| - | 1 | 1 | 1 | 1 | 1752353-2 GUIDE PIN, HOLDDOWN | 175 |
| - | 1 | 1 | 1 | 1 | 1901680-2 GUIDE PIN, HOLDDOWN | 174 |
| - | - | - | - | 2 | 21045-3 RING, RETAIN, EXTERN, 3/16 CRESCENT | 172 |
| - | 1 | 1 | 1 | 1 | 994969-1 MAGNET, RARE EARTH HIGH ENERGY | 166 |
| - | REF | REF | REF | REF | 994970-2 COUNTER, MAGNETIC | 164 |
| - | - | - | - | 1 | 240638-1 SPRING, FEED FINGER | 163 |
| - | - | - | - | 1 | 3-23627-7 PIN, RETAIN, GRVD, 3/16 X .854 | 137 |
| - | - | - | - | 1 | 2119799-1 HOLDER, FEED FINGER, AF | 136 |
| - | - | REF | REF | - | SEE NOTE 4 MEMORY CHIP, PROGRAMMED | 135 |
| - | - | 1 | 1 | - | 1633743-1 SERVO FEED LATCH ASM | 133 |
| - | 1 | 1 | 1 | 1 | 1-18028-2 WASHER, FLAT, REG M4 | 119 |
| - | - | REF | REF | - | 2119944-1 FEED FINGER ASSEMBLY, SF | 117 |
| - | 1 | 1 | 1 | 1 | 455888-4 SPACER, CRIMPER | 82 |
| - | 1 | 1 | 1 | 1 | 2119956-1 DOCUMENTATION PACKAGE | 71 |
| - | 1 | - | - | 1 | 2119740-1 TAG, IDENTIFICATION | 67 |
| - | 2 | 2 | 2 | 2 | 2168078-1 SCREW, DRIVE, RH, RoHS, 2 x .188 | 66 |
| - | 1 | - | - | 1 | 2119793-1 LIMITER, ADJUSTMENT BOLT | 63 |
| ⁶ | - | 3 | - | 3 | 3 992763-5 SCR, SET, SOC, CONE PNT, M3 X 4.0 | 62 |
| - | 1 | 1 | 1 | 1 | 2079383-4 SCR, BHSC, RoHS (M4 X 8) | 60 |
| ⁴ | - | 1 | 1 | 1 | 5-18022-5 SCR, HEX HD CAP, M4 X 6.0 | 59 |
| - | - | - | - | 1 | 985575-3 SCR, FLT SKT HD CAP M3 X 10.0 | 57 |
| - | - | - | - | 1 | 1338685-1 PAWL, FEED | 56 |
| - | 4 | 4 | 4 | 4 | 2168400-1 SHCS, LOW HEAD, RoHS, M4 X 12 | 54 |
| - | 1 | 1 | 1 | 1 | 1-5018030-0 NUT, HEX, REG, RoHS, M3.5 | 52 |
| - | 1 | 1 | 1 | 1 | 1901681-1 HOLDDOWN, TERMINAL | 51 |
| - | - | - | - | 1 | 2 18023-9 SCR, SKT HD CAP M4 X 6.0 | 49 |
| - | - | - | - | 1 | 2119652-1 FEED CAM, PRE FEED | 48 |
| - | - | - | - | 1 | 2119653-1 FEED CAM, POST FEED | 47 |
| ³ | - | 1 | 1 | 1 | 2-2119656-1 APPLICATOR BASIC ASSEMBLY, SF | 46 |
| - | 1 | - | - | 1 | 2119370-1 RAM, AMP STYLE, SIDE FEED | 44 |
| - | 1 | 1 | 1 | 1 | 2079383-7 SCR, BHSC, RoHS (M8 X 25) | 41 |
| - | 1 | - | - | 1 | 2119645-1 DISC, NUMBERED FA WIRE ADJUSTMENT | 40 |
| - | 1 | - | - | 1 | 2119957-1 APPLICATOR SHIM PACK | 39 |
| - | 1 | 1 | 1 | 1 | 2119644-2 RAM WASHER, PRECISION | 38 |
| ⁶ | - | 1 | 1 | 1 | 2119085-1 FA HEAD, ATLANTIC STYLE | 37 |
| - | 1 | - | - | 1 | 2119092-1 BOLT, ADJUSTMENT | 35 |
| - | 1 | 1 | 1 | 1 | 1752356-1 SUPPORT, TERMINAL | 34 |
| - | 2 | 2 | 2 | 2 | 2079383-5 SCR, BHSC, RoHS (M4 X 20) | 33 |
| - | 1 | 1 | 1 | 1 | 2161328-1 HEX HEAD, FLANGED, M5 X 8mm LONG | 32 |
| - | 1 | 1 | 1 | 1 | 1-1320908-2 SPACER, STRIP GUIDE | 30 |
| - | 1 | 1 | 1 | 1 | 2119959-1 ASSEMBLY, STRIP GUIDE | 29 |
| - | 1 | 1 | 1 | 1 | 1-455888-0 SPACER, CRIMPER | 28 |
| - | 1 | 1 | 1 | 1 | 1320928-2 STRIP GUIDE | 24 |
| ¹ | - | 1 | 1 | 1 | 2119806-1 INSERT, SHEAR | 13 |
| - | 1 | 1 | 1 | 1 | 3-22280-3 SPRING, COMPRESSION | 12 |
| - | 1 | 1 | 1 | 1 | 1-356885-4 STOP, SHEAR | 11 |
| ¹ | - | 1 | 1 | 1 | 2119805-1 SHEAR HOLDER, FRONT | 10 |
| ¹ | - | 1 | 1 | 1 | 318707-1 FLOATING SHEAR, FRONT | 9 |
| ¹ | 1 | 1 | 1 | 1 | 1-1633703-0 ANVIL, COMBINATION | 8 |
| - | - | - | - | - | - | 7 |
| - | - | - | - | - | - | 6 |
| - | 1 | 1 | 1 | 1 | 2119781-5 DEPRESSOR, SHEAR | 5 |
| - | 1 | 1 | 1 | 1 | 3-238011-8 BLOCK, CRIMPER SPACER | 4 |
| ¹ | 1 | 1 | 1 | 1 | 2-1803018-3 CRIMPER, INSULATION O | 3 |
| - | 1 | 1 | 1 | 1 | 455888-5 SPACER, CRIMPER | 2 |
| ¹ | 1 | 1 | 1 | 1 | 3-1673600-2 CRIMPER, WIRE | 1 |

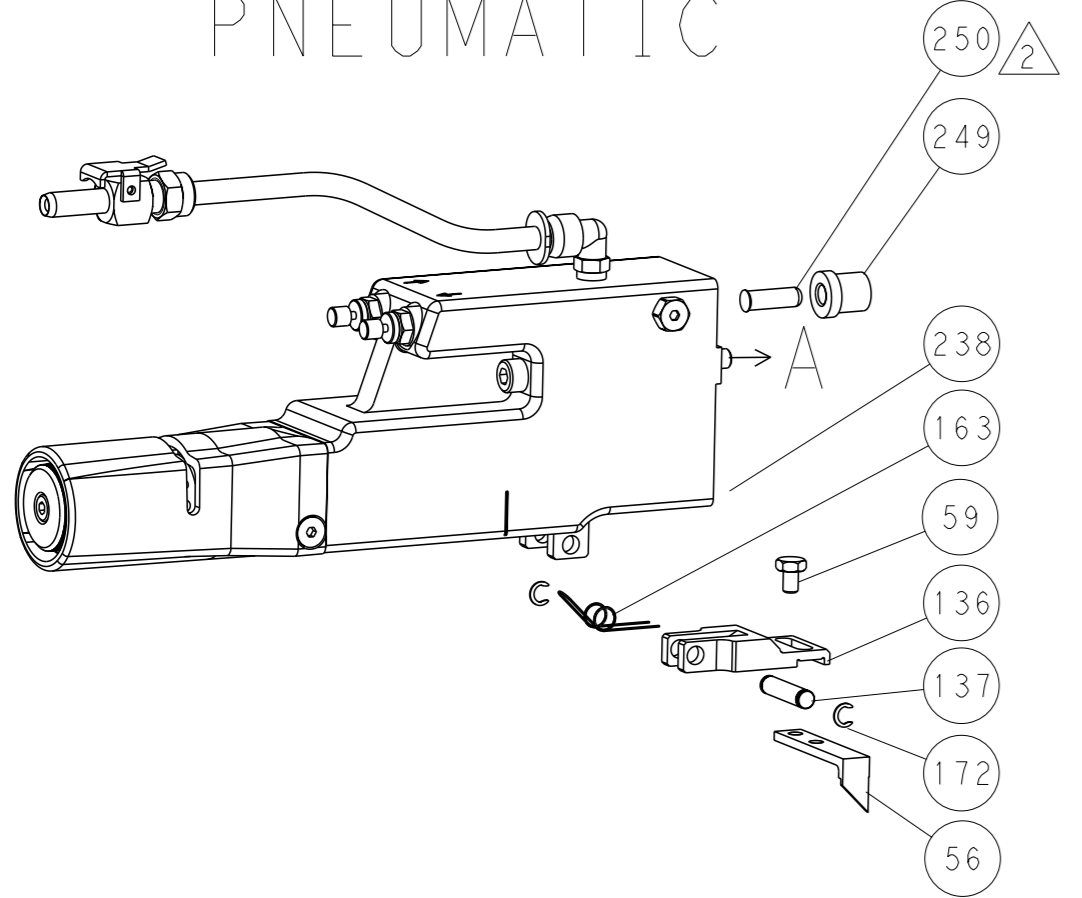
| DIMENSIONS: | | TOLERANCES UNLESS OTHERWISE SPECIFIED: | | MATERIAL: | |
|--|---------------|--|---------|--------------|---------|
| mm | 0 PLC ± | 1 PLC ± | 2 PLC ± | 3 PLC ± | 4 PLC ± |
| | ANGLES FINISH | | | | |
| Customer Accessible Production Drawing | | SCALE 1:2 | | SHEET 1 of 4 | |

| REVISONS | | DATE | OWN | APVD |
|---------------|-----|------|-----|------|
| P | LYH | | | |
| - SEE SHEET 1 | | | | |

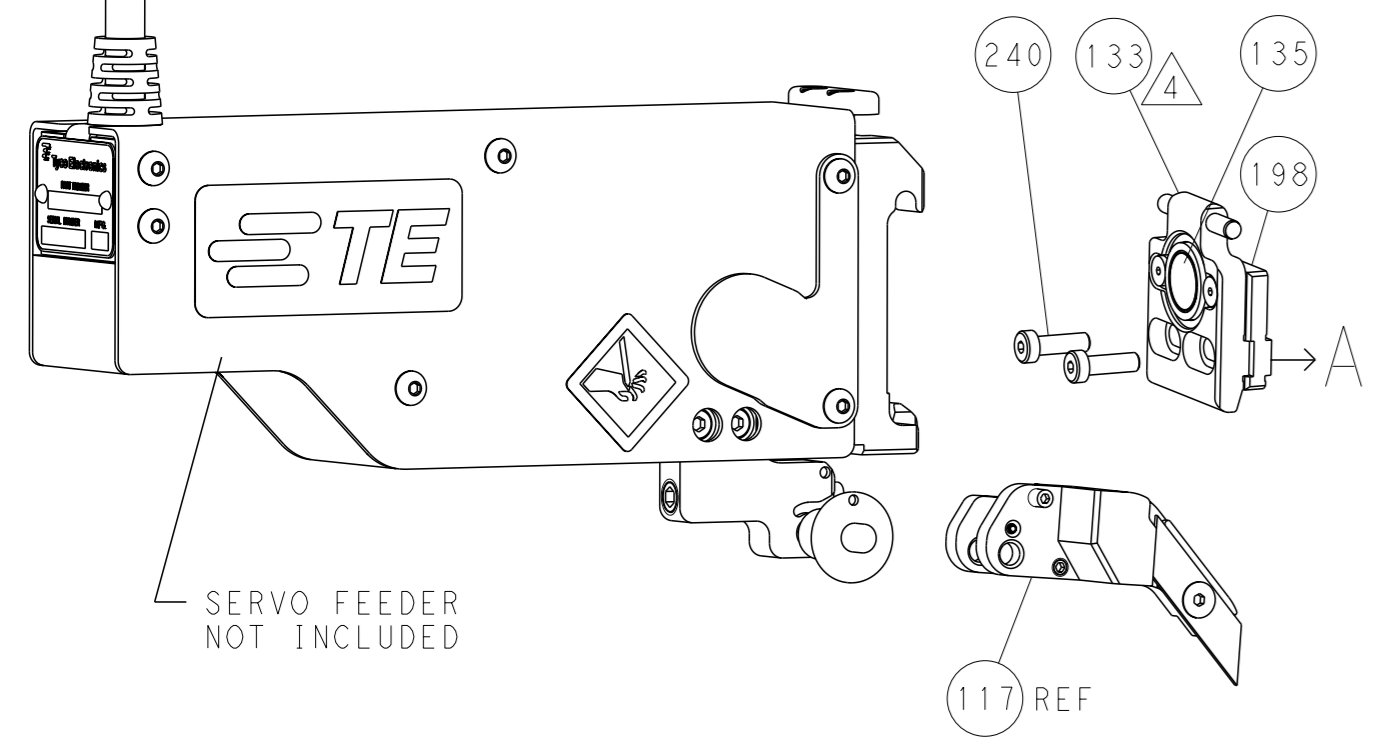
FEED TYPE MECHANICAL



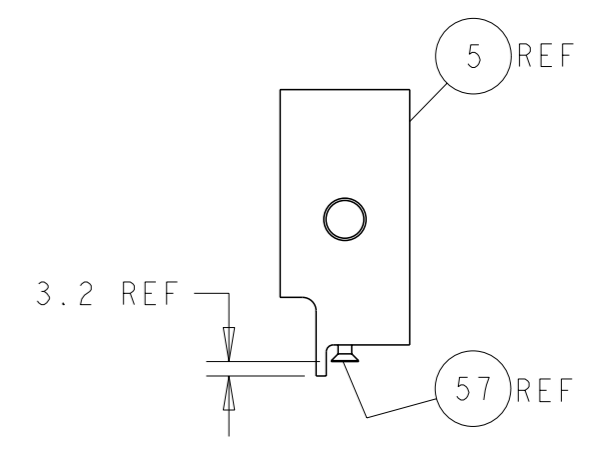
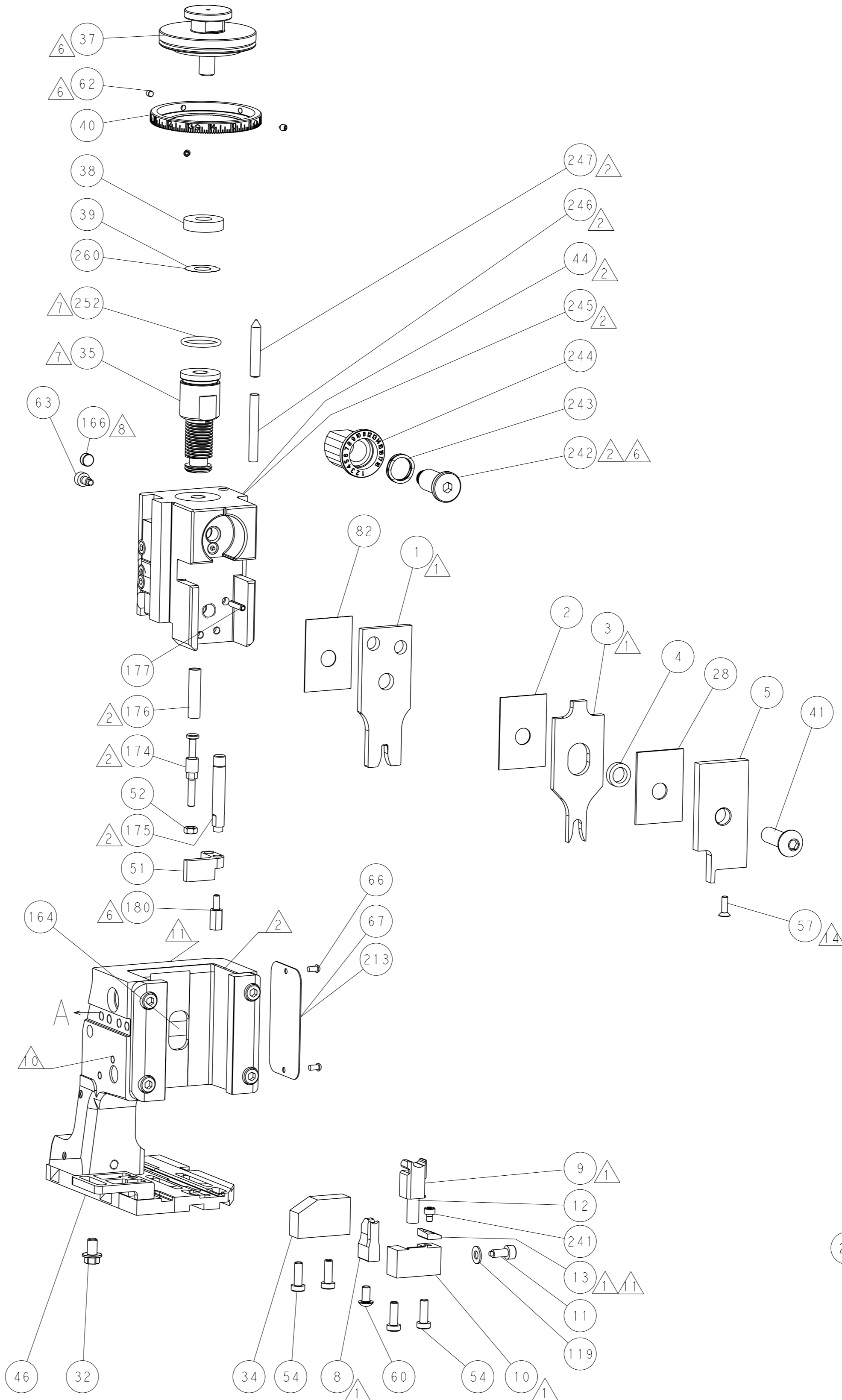
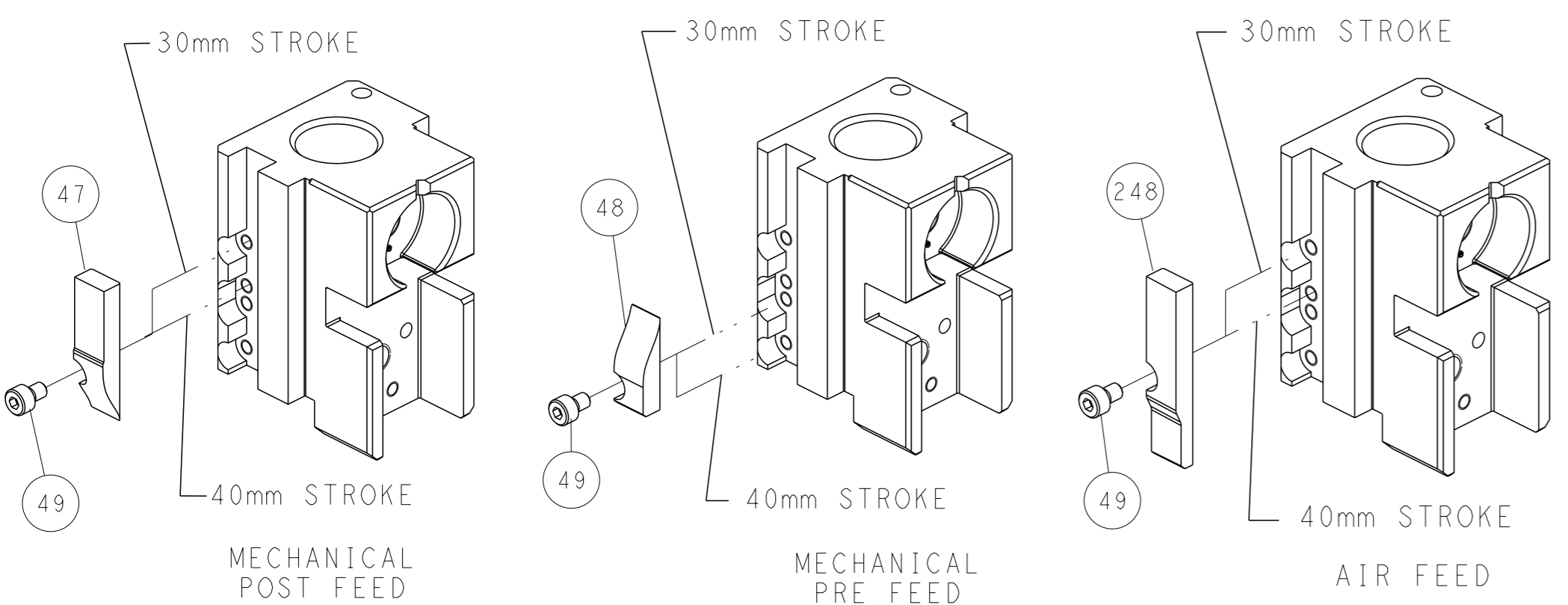
PNEUMATIC



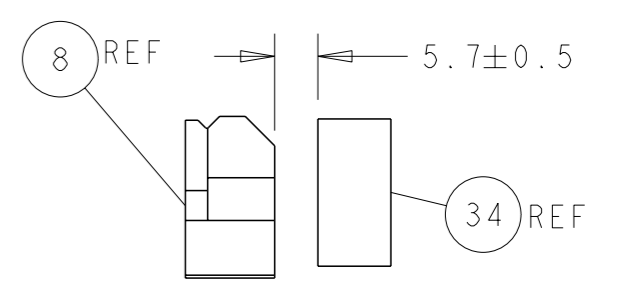
SERVO LATCH PLATE



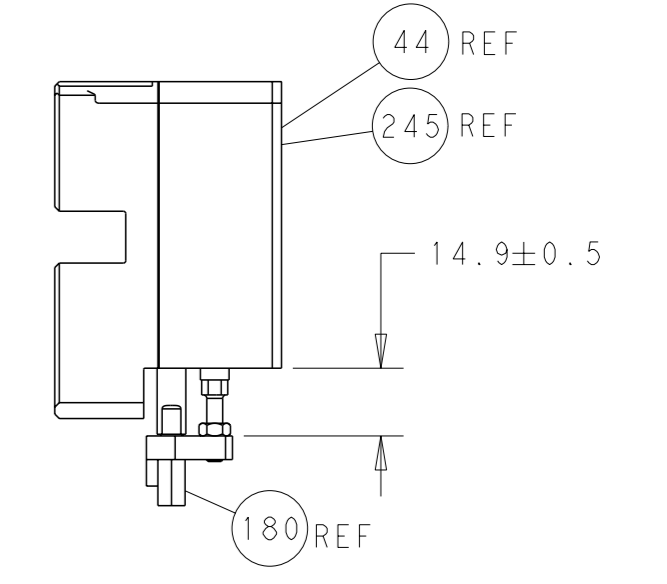
CAM POSITIONS



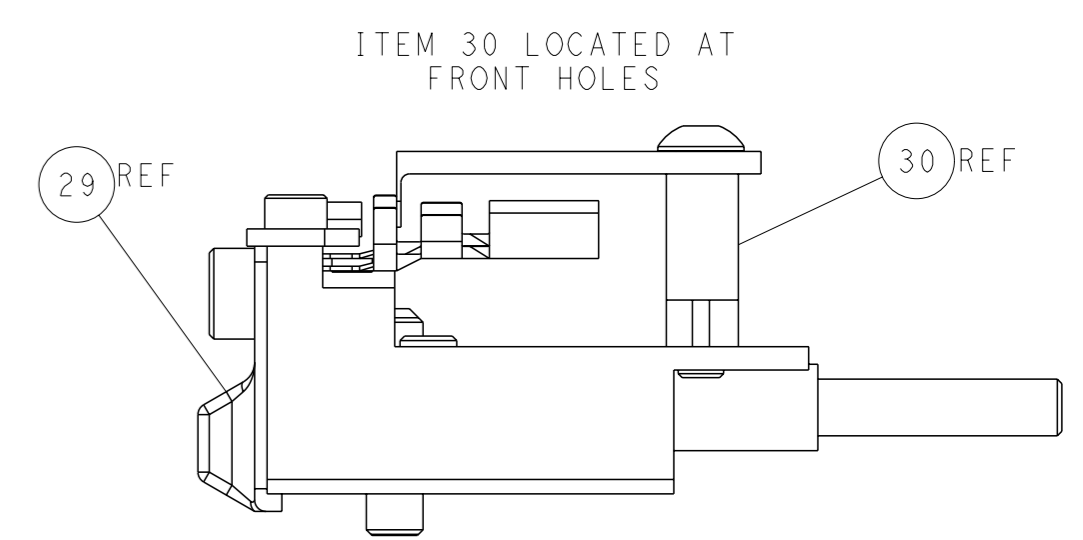
SHEAR DEPRESSOR DETAIL



TERMINAL SUPPORT LOCATION



HOLDDOWN SET-UP



FEED TRACK POSITION GUIDE BY INSULATION BARREL

ATLANTIC VERSION
 Shown on sheets 1 of 4 & 2 of 4
 (Pacific version shown on sheets 3 of 4 & 4 of 4)

| | | | | |
|--|--|---|---|--|
| <small>THIS DRAWING IS UNPUBLISHED. RELEASED FOR PUBLICATION BY TYCO ELECTRONICS CORPORATION. ALL RIGHTS RESERVED.</small> | | OWN: L. GROSS CUS: T. ELBIN APVD: M. CLIFFORD PRODUCT SPEC: 28OCT2013 APPLICATION SPEC: 28OCT2013 | NAME: Ocean Side Feed Applicator SIZE: A1 CAGE CODE: 00779 DRAWING NO: 2266137 SCALE: 1:2 SHEET: 2 of 4 REV: B1 | TE Connectivity Harrisburg, PA 17105-3608 |
| DIMENSIONS: mm TOLERANCES UNLESS OTHERWISE SPECIFIED: 0 PLC ± 1 PLC ± 2 PLC ± 3 PLC ± 4 PLC ± ANGLES FINISH ± | | WEIGHT: - RESTRICTED TO: - | CUSTOMER ACCESSIBLE PRODUCTION DRAWING | SHEETS 3 & 4 ARE NOT REQUIRED FOR ATLANTIC VERSION |

| PACIFIC VERSION TERMINATOR INTERFACE ADAPTER | PART NUMBER | REVISION | DESCRIPTION | FEED TYPE | |
|--|-------------|----------|--------------------------|-------------------|----------|
| | 2-2266137-1 | B | FINE CRIMP HEIGHT ADJUST | MECHANICAL | OBSOLETE |
| | 2-2266137-2 | B | FINE CRIMP HEIGHT ADJUST | PNEUMATIC | OBSOLETE |
| | 2-2266137-5 | B | FINE CRIMP HEIGHT ADJUST | SERVO LATCH PLATE | OBSOLETE |
| | 2-2266137-7 | B | FINE CRIMP HEIGHT ADJUST | NONE | OBSOLETE |
| | 7-2266137-7 | A | CRIMP TOOLING KIT | - | |

| APPLICATOR DATA | | |
|--------------------------------------|----------------|------|
| CRIMP | SIZE | TYPE |
| WIRE | 3.25 mm [.128] | F |
| INSUL | 4.88 mm [.192] | O |
| APPLICATOR INSTRUCTIONS 408-10389 | | |

| | | | | |
|---|---|-----------|-------------|----------------|
| TERMINAL DATA: DELPHI TERMINAL DELPHI CRIMP SPECIFICATION | | | | |
| TERMINAL NAME: TAXI TERM F M/P 280 SEALED | | | | |
| WIRE STRIP LENGTH 4.80-5.60 mm [.189-.220 IN] | INSULATION DIAMETER RANGE Ø2.45-3.80 mm [.096-.150 IN] | | | |
| TERMINAL APPLICATION SPECIFICATION DELPHI | | | | |
| TERMINALS APPLIED | | | | |
| TE TERMINAL | DELPHI TERMINAL | TE SEAL | DELPHI SEAL | CABLE DIAMETER |
| 286919-1 | 12129493 | 1949807-1 | 15324982 | 2.03-2.85mm |
| 286919-2 | 12176388 | 286553-1 | 12015323 | 2.03-2.85mm |
| | | 1572716-3 | 15324980 | 2.81-3.49mm |
| | | 1572716-1 | 12010293 | 2.81-3.49mm |
| | | 1949896-1 | 15324981 | 3.45-4.3mm |

| WIRE SIZE | CRIMP HEIGHT mm [INCH] | CRIMP HEIGHT REFERENCE SETTING |
|-----------|----------------------------|--------------------------------|
| 3.00mm2 | 1.95+/-0.05 [.077+/-0.002] | 6.1 |
| 2.00mm2 | 1.70+/-0.05 [.067+/-0.002] | 8.6 |

- 1 RECOMMENDED SPARE PARTS
- 2 GREASE BEARING SURFACES LIGHTLY
- 3. LUBRICATE DAILY PER THE APPLICATOR INSTRUCTION SHEET SUPPLIED WITH THE APPLICATOR.
- 4 APPLICATOR SPECIFIC DATA TO BE ENTERED INTO BLANK MEMORY CHIP AT ASSEMBLY. SEE BELOW FOR PART NUMBER:
MECHANICAL FEED WITH "SMART APPLICATOR" CONVERSION: 8-2266137-4
PNEUMATIC FEED WITH "SMART APPLICATOR" CONVERSION: 8-2266137-4
SERVO FEED WITH "FINE CRIMP HEIGHT ADJUST": 8-2266137-5
- 5. ADJUSTMENT OF THE STRIPPER MAY BE REQUIRED WHEN MOVING THE APPLICATOR BETWEEN BENCH AND LEADMAKER APPLICATIONS.
- 6 APPLY PART NUMBER 1-23419-5 LOCTITE TO THREADS OF ITEMS 62 & 180. APPLY PART NUMBER 2-23419-6 LOCTITE TO THREADS OF ITEMS 242.
- 7 GREASE THREADS, GROOVE AND O-RING ON ITEMS 139 & 152.
- 8 MAGNET MUST BE ORIENTED CORRECTLY IN ORDER TO PROPERLY ACTUATE THE COUNTER.
- 9 CRIMP HEIGHT REFERENCE SETTING WAS THE SETTING USED WHEN THE APPLICATOR WAS QUALIFIED AT THE FACTORY. ADJUSTMENT MAY BE NECESSARY WHEN RUNNING APPLICATOR IN THE FIELD.
- 10 SPARE FEED CAM STORAGE LOCATION REFER TO INSTRUCTION SHEET FOR ADDITIONAL INFORMATION.
- 11 TO CONVERT THE APPLICATOR TO A NON-CARRIER CUTTING STYLE, REMOVE ITEM 13 AND ATTACH TO THE LOCATION ON BACK SIDE OF THE HOUSING. REFER TO INSTRUCTION SHEET FOR ADDITIONAL INFORMATION.
- 12 THE INSULATION RANGE LISTED IS FOR THE TERMINAL. REFER TO THE CHART FOR RANGE OF SEALS LISTED ON APPLICATOR DRAWING.
- 13 APPLY TORQ-SEAL IN ALLEN SOCKET TO FILL HOLE AFTER FLAT HD HAS BEEN ADJUSTED TO CORRECT HEIGHT AT QUALIFICATION. APPLY #1-23419-5 LOC-TITE TO THREADS.
- 14 THIS APPLICATOR IS SPECIFIC FOR USE IN A STRIPPER SEAL TERMINATING UNIT.

***WARNING**
ON INSTALLATION, SET WIRE DISC, ITEM 40 TO LARGEST WIRE SIZE SETTING. USE OF SETTINGS BELOW MINIMUM REQUIRED CRIMP HEIGHT SETTING WILL CAUSE DAMAGE TO CRIMP TOOLING.

| | | | | | | | |
|-----|-----|-----|-----|-----|-----------|-------------------------------------|---------|
| - | 1 | 1 | 1 | 1 | 2119782-1 | FINE ADJUST HEAD ASM, PACIFIC STYLE | 251 |
| -77 | -27 | -25 | -22 | -21 | PART NO | DESCRIPTION | ITEM NO |

PACIFIC VERSION
Shown on sheets 3 of 4 & 4 of 4
(Atlantic version shown on sheets 1 of 4 & 2 of 4)

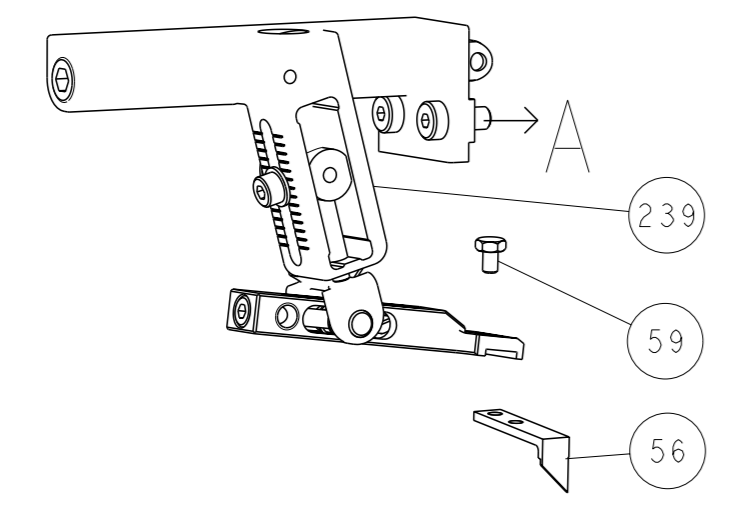
| SET UP GAUGE | LOC | DIST | REVISIONS | | | | | |
|--------------|-----|------|-----------|-----|-------------|------|-----|------|
| 2119599-1 | A | 66 | P | LYR | DESCRIPTION | DATE | OWN | APVD |
| | | | - | - | SEE SHEET 1 | - | - | - |

| | | | | | | | |
|---|-----|-----|-----|-----|-------------|-------------------------------------|-----|
| - | - | - | 1 | - | 2119640-1 | PUSH ROD, AIR FEED | 250 |
| - | - | - | 1 | - | 2079988-1 | BUSHING, LCH5-12, MISUMI | 249 |
| - | 1 | 1 | 1 | 1 | 1-22279-3 | SPRING, COMPRESSION | 246 |
| - | 1 | 1 | 1 | 1 | 2119082-9 | CAM, SNAIL, INSULATION ADJUSTMENT | 244 |
| - | 1 | 1 | 1 | 1 | 2079764-1 | WASHER, WAVE SPRING, CREST-TO-CREST | 243 |
| 6 | - | 1 | 1 | 1 | 2119083-1 | RETAINER, INSULATION DIAL | 242 |
| - | 1 | 1 | 1 | 1 | 7-18023-7 | SCR, SKT HD CAP M3 X 4.0 | 241 |
| - | - | 2 | - | - | 2168400-6 | SHCS, LOW HEAD, RoHS, M5 X 16 | 240 |
| - | - | - | - | 1 | 2119580-1 | MECHANICAL FEED ASSEMBLY | 239 |
| - | - | - | - | 1 | 2063440-1 | AIR FEED MODULE | 238 |
| - | - | 1 | - | - | 2119740-2 | TAG, IDENTIFICATION | 213 |
| - | - | 1 | - | - | 1901094-3 | SPACER, FEEDER | 198 |
| 6 | - | 1 | 1 | 1 | 2-1752354-5 | STANDOFF, HOLD-DOWN | 180 |
| - | 1 | 1 | 1 | 1 | 6-993111-6 | PIN, SLOTTED SPRING 3.0 X 14.0 | 177 |
| - | 1 | 1 | 1 | 1 | 8-22280-7 | SPRING, COMPRESSION | 176 |
| - | 1 | 1 | 1 | 1 | 1752353-2 | GUIDE PIN, HOLDDOWN | 175 |
| - | 1 | 1 | 1 | 1 | 1901680-2 | GUIDE PIN, HOLDDOWN | 174 |
| - | - | - | 2 | - | 21045-3 | RING, RETAIN, EXTERN, 3/16 CRESCENT | 172 |
| - | 1 | 1 | 1 | 1 | 994969-1 | MAGNET, RARE EARTH HIGH ENERGY | 166 |
| - | REF | REF | REF | REF | 994970-2 | COUNTER, MAGNETIC | 164 |
| - | - | - | 1 | - | 240638-1 | SPRING, FEED FINGER | 163 |
| - | 1 | 1 | 1 | 1 | 8-21084-1 | O-RING, .801 ID, .070 DIA. MAT. | 152 |
| - | - | - | 1 | - | 2119641-2 | FEED CAM, AIR FEED | 151 |
| - | 1 | 1 | 1 | 1 | 2119798-2 | DETENT PIN | 145 |
| - | 1 | 1 | 1 | 1 | 2079383-8 | SCR, BHSC, RoHS (M4 X 16) | 144 |
| - | 4 | 4 | 4 | 4 | 2168400-5 | SHCS, LOW HEAD, RoHS, M4 X 20 | 143 |
| - | - | - | - | 1 | 2119653-2 | FEED CAM, POST FEED | 142 |
| 4 | - | 1 | 1 | 1 | 2-2119656-2 | APPLICATOR BASIC ASSEMBLY, SF | 141 |
| - | 1 | 1 | 1 | 1 | 2119650-1 | RAM, ASIAN STYLE, SIDE FEED | 140 |
| - | 1 | 1 | 1 | 1 | 2119092-2 | BOLT, ADJUSTMENT | 139 |
| - | - | - | 1 | - | 3-23627-7 | PIN, RETAIN, GRVD, 3/16 X .854 | 137 |
| - | - | - | 1 | - | 2119799-1 | HOLDER, FEED FINGER, AF | 136 |
| - | - | REF | - | - | SEE NOTE 4 | MEMORY CHIP, PROGRAMMED | 135 |
| - | - | 1 | - | - | 1633743-1 | SERVO FEED LATCH ASM | 133 |
| - | 1 | 1 | 1 | 1 | 1-18028-2 | WASHER, FLAT, REG M4 | 119 |
| - | - | REF | - | - | 2119944-1 | FEED FINGER ASSEMBLY, SF | 117 |
| - | 1 | 1 | 1 | 1 | 455888-4 | SPACER, CRIMPER | 82 |
| - | 1 | 1 | 1 | 1 | 2119956-1 | DOCUMENTATION PACKAGE | 71 |
| - | 1 | - | 1 | 1 | 2119740-1 | TAG, IDENTIFICATION | 67 |
| - | 2 | 2 | 2 | 2 | 2168078-1 | SCREW, DRIVE, RH, RoHS, 2 x .188 | 66 |
| - | 1 | 1 | 1 | 1 | 2119793-1 | LIMITER, ADJUSTMENT BOLT | 63 |
| 6 | - | 3 | 3 | 3 | 992763-5 | SCR, SET, SOC, CONE PNT, M3 X 4.0 | 62 |
| - | - | - | 1 | 1 | 5-18022-5 | SCR, HEX HD CAP, M4 X 6.0 | 59 |
| 3 | - | 1 | 1 | 1 | 985575-3 | SCR, FLT SKT HD CAP M3 X 10.0 | 57 |
| - | - | - | 1 | 1 | 1338685-1 | PAWL, FEED | 56 |
| - | 1 | 1 | 1 | 1 | 1-5018030-0 | NUT, HEX, REG, RoHS, M3.5 | 52 |
| - | 1 | 1 | 1 | 1 | 1901681-1 | HOLDDOWN, TERMINAL | 51 |
| - | - | - | 1 | 2 | 18023-9 | SCR, SKT HD CAP M4 X 6.0 | 49 |
| - | - | - | - | 1 | 2119652-1 | FEED CAM, PRE FEED | 48 |
| - | 1 | 1 | 1 | 1 | 2079383-7 | SCR, BHSC, RoHS (M8 X 25) | 41 |
| - | 1 | 1 | 1 | 1 | 2119645-1 | DISC, NUMBERED FA WIRE ADJUSTMENT | 40 |
| - | 1 | 1 | 1 | 1 | 2119957-1 | APPLICATOR SHIM PACK | 39 |
| - | 1 | 1 | 1 | 1 | 2119644-2 | RAM WASHER, PRECISION | 38 |
| - | 1 | 1 | 1 | 1 | 1752356-1 | SUPPORT, TERMINAL | 34 |
| - | 2 | 2 | 2 | 2 | 2079383-5 | SCR, BHSC, RoHS (M4 X 20) | 33 |
| - | 1 | 1 | 1 | 1 | 2161328-1 | HEX HEAD, FLANGED, M5 X 8mm LONG | 32 |
| - | 1 | 1 | 1 | 1 | 1-1320908-2 | SPACER, STRIP GUIDE | 30 |
| - | 1 | 1 | 1 | 1 | 2119959-1 | ASSEMBLY, STRIP GUIDE | 29 |
| - | 1 | 1 | 1 | 1 | 1-455888-0 | SPACER, CRIMPER | 28 |
| - | 1 | 1 | 1 | 1 | 1320928-2 | STRIP GUIDE | 24 |
| 1 | - | 1 | 1 | 1 | 2119806-1 | INSERT, SHEAR | 13 |
| - | 1 | 1 | 1 | 1 | 3-22280-3 | SPRING, COMPRESSION | 12 |
| - | 1 | 1 | 1 | 1 | 1-356885-4 | STOP, SHEAR | 11 |
| 1 | - | 1 | 1 | 1 | 2119805-1 | SHEAR HOLDER, FRONT | 10 |
| 1 | - | 1 | 1 | 1 | 318707-1 | FLOATING SHEAR, FRONT | 9 |
| 1 | 1 | 1 | 1 | 1 | 1-1633703-0 | ANVIL, COMBINATION | 8 |
| - | - | - | - | - | - | - | 7 |
| - | - | - | - | - | - | - | 6 |
| - | 1 | 1 | 1 | 1 | 2119781-5 | DEPRESSOR, SHEAR | 5 |
| - | 1 | 1 | 1 | 1 | 3-238011-8 | BLOCK, CRIMPER SPACER | 4 |
| 1 | 1 | 1 | 1 | 1 | 2-1803018-3 | CRIMPER, INSULATION O | 3 |
| - | 1 | 1 | 1 | 1 | 455888-5 | SPACER, CRIMPER | 2 |
| 1 | 1 | 1 | 1 | 1 | 3-1673600-2 | CRIMPER, WIRE | 1 |

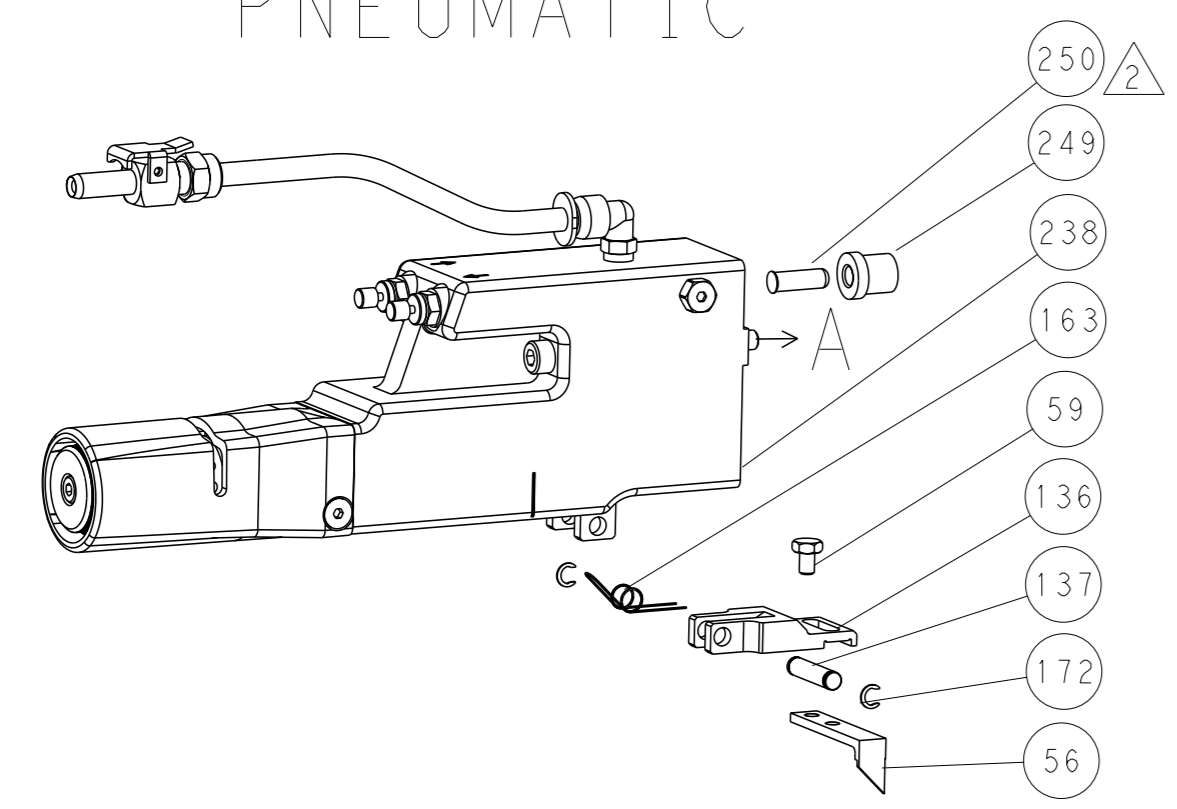
| | | | | | | |
|-------------|---------|--|---------|--|-----------|--|
| DIMENSIONS: | | TOLERANCES UNLESS OTHERWISE SPECIFIED: | | OWN | 280CT2013 | TE Connectivity Harrisburg, PA 17105-3608 |
| mm | 0 PLC ± | 1 PLC ± | 2 PLC ± | 3 PLC ± | 4 PLC ± | |
| MATERIAL: | | FINISH: | | APVD | 280CT2013 | NAME Ocean Side Feed Applicator |
| | | | | PRODUCT SPEC | | |
| | | | | APPLICATION SPEC | | SIZE |
| | | | | WEIGHT | | CAGE CODE |
| | | | | SCALE | 1:2 | DRAWING NO |
| | | | | RESTRICTED TO | | |
| | | | | Customer Accessible Production Drawing | | |
| | | | | SHEET | 3 | OF 4 |
| | | | | REV | B1 | |

| LOC | DIST | REVISIONS | | | |
|-----|------|-----------|-------------|-----|------|
| A | 66 | REV | DATE | OWN | APVD |
| | | - | SEE SHEET 1 | - | - |

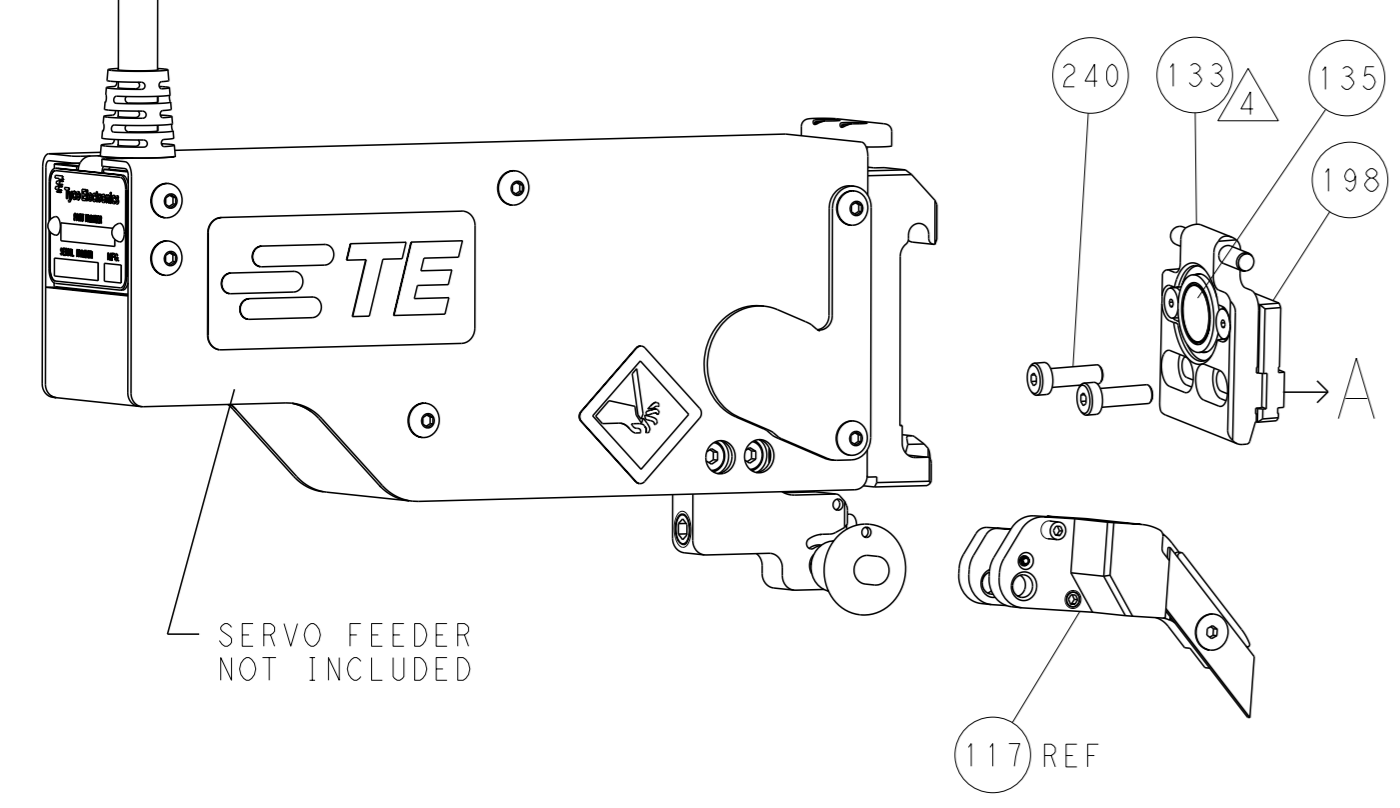
FEED TYPE MECHANICAL



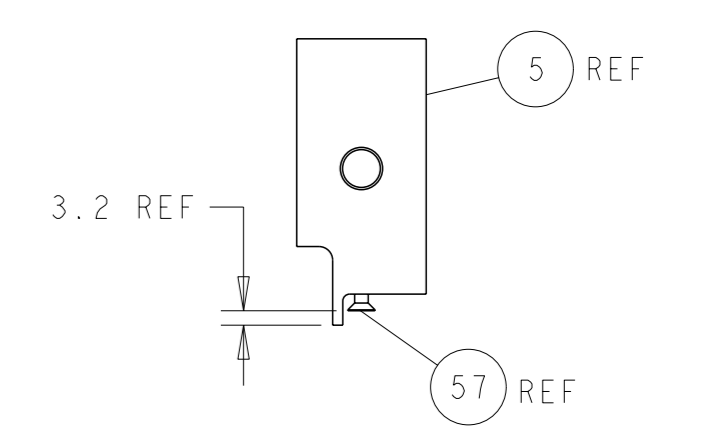
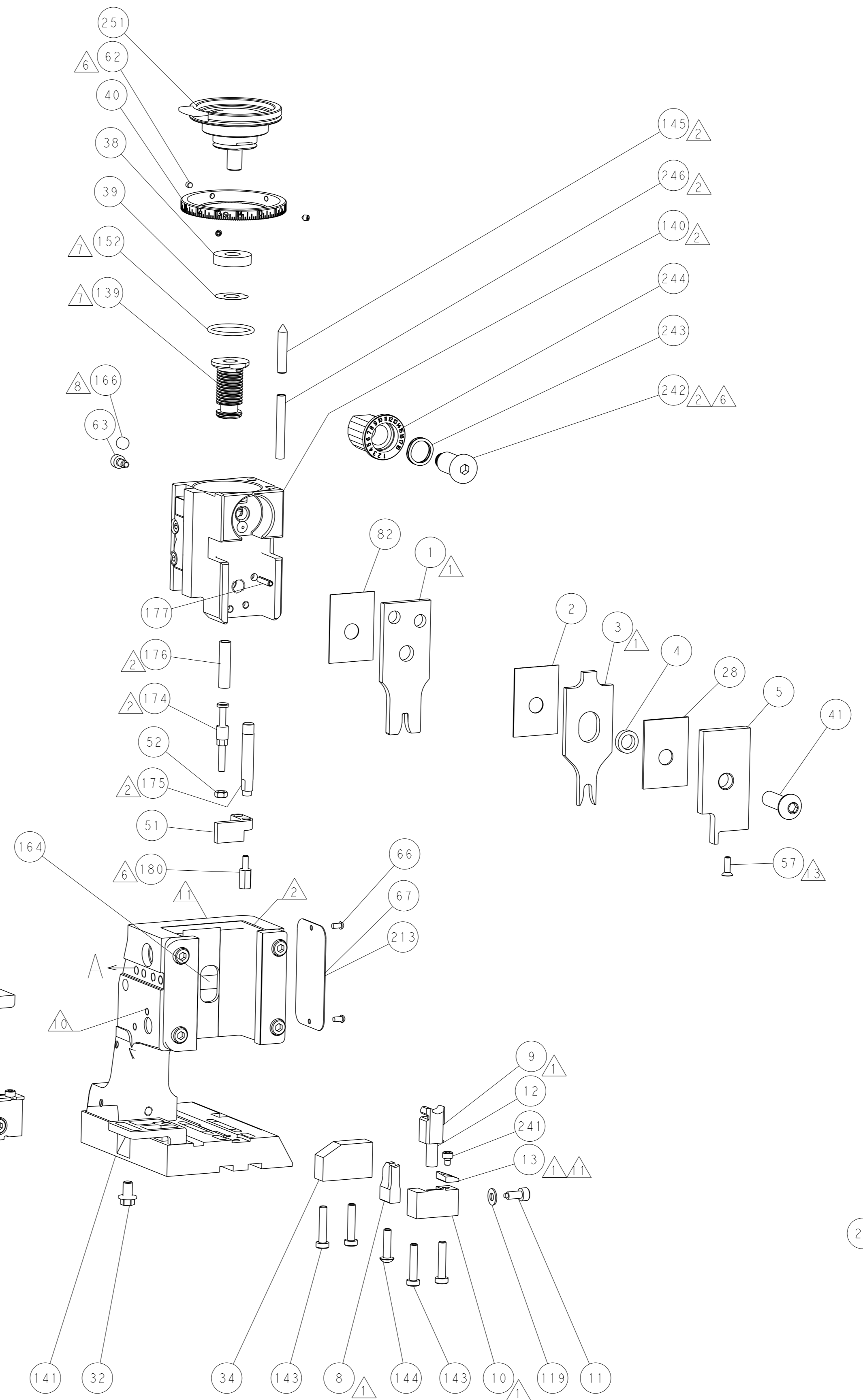
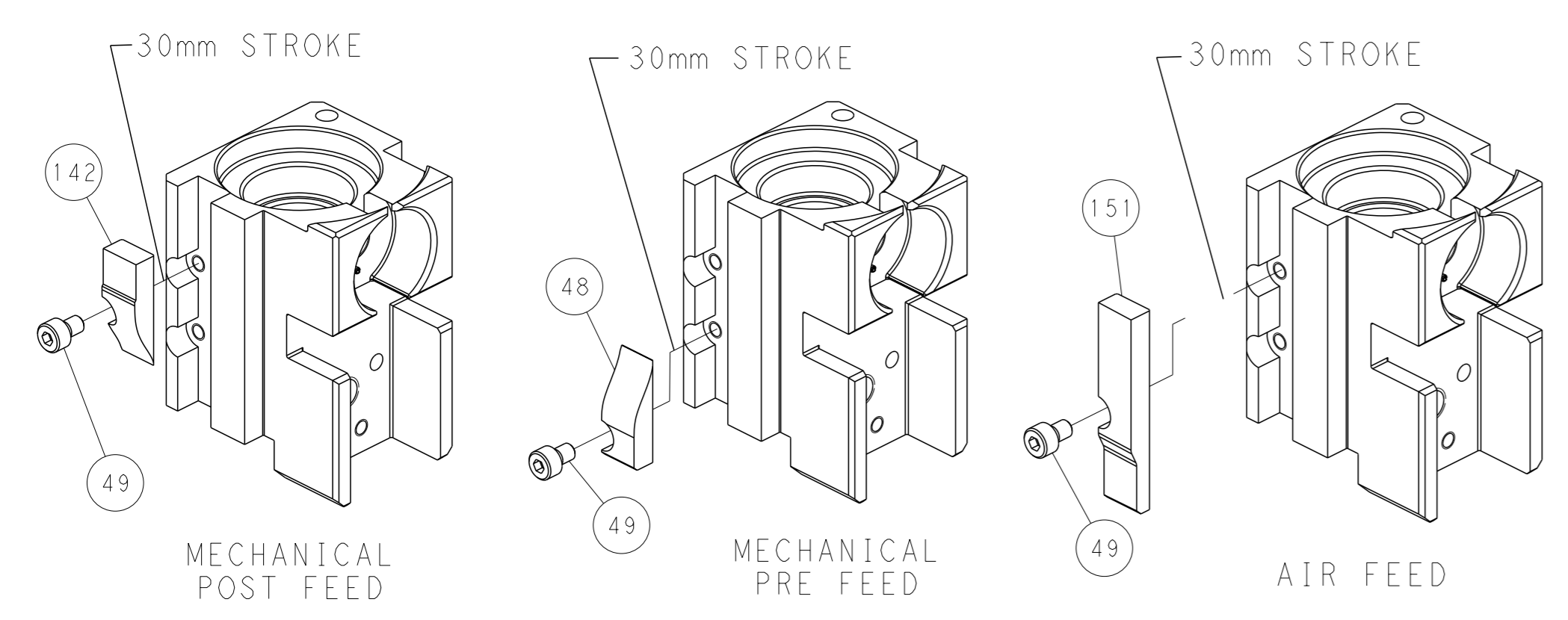
PNEUMATIC



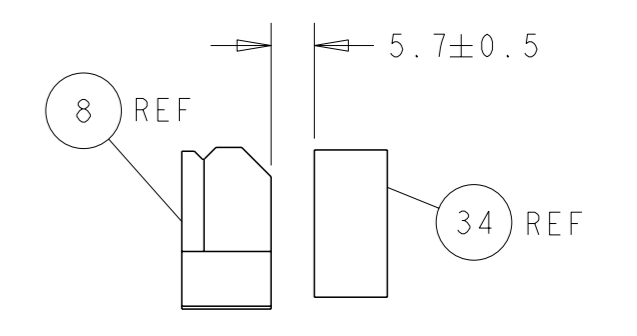
SERVO LATCH PLATE



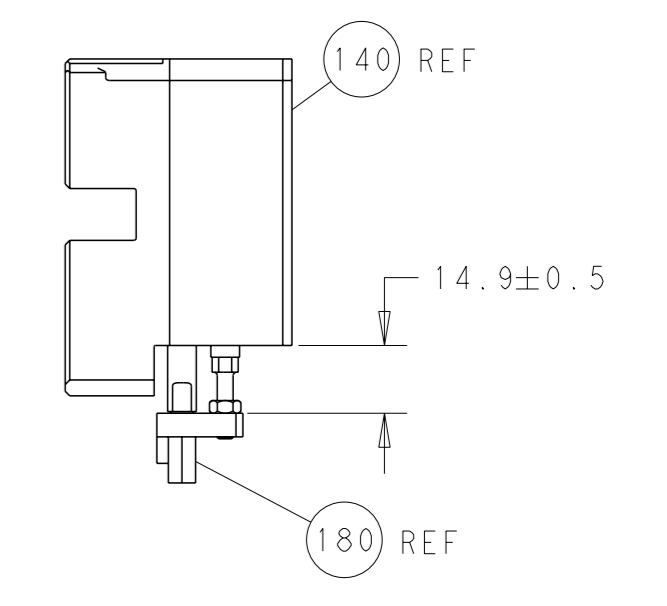
CAM POSITIONS



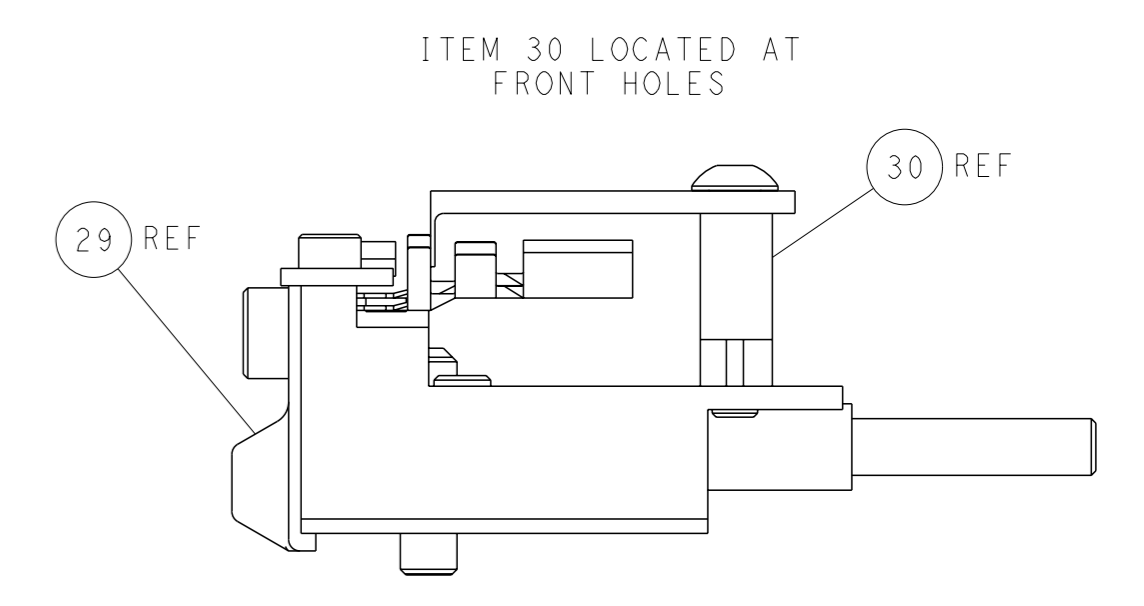
SHEAR DEPRESSOR DETAIL



TERMINAL SUPPORT LOCATION



HOLDDOWN SET-UP



FEED TRACK POSITION GUIDE BY INSULATION BARREL

PACIFIC VERSION
 Shown on sheets 3 of 4 & 4 of 4
 (Atlantic version shown on sheets 1 of 4 & 2 of 4)

| | | | |
|--|--------------------------|--|--|
| <small>THIS DRAWING IS A CONTROLLED DOCUMENT FOR TYCO ELECTRONICS CORPORATION. IT IS SUBJECT TO CHANGE AND THE CONTROLLING ENGINEERING ORGANIZATION SHOULD BE CONTACTED FOR THE LATEST REVISION.</small> | | DWN: L.GROSS CHK: T.ELBIN APVD: M.CLIFFORD PRODUCT SPEC: 28OCT2013 APPLICATION SPEC: 28OCT2013 | NAME: Ocean Side Feed Applicator SIZE: A1 SCALE: 1:2 SHEET: 4 of 4 REV: B1 |
| DIMENSIONS: mm TOLERANCES UNLESS OTHERWISE SPECIFIED: 0 PLC ± 1 PLC ± 2 PLC ± 3 PLC ± 4 PLC ± ANGLES FINISH ± | WEIGHT: - MATERIAL: - | CUSTOMER ACCESSIBLE PRODUCTION DRAWING | RESTRICTED TO: - |