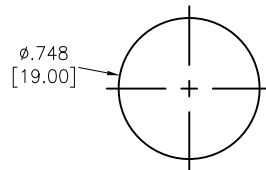
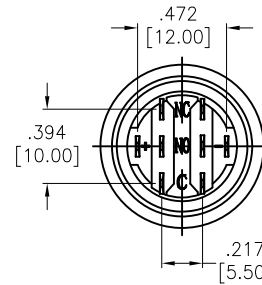
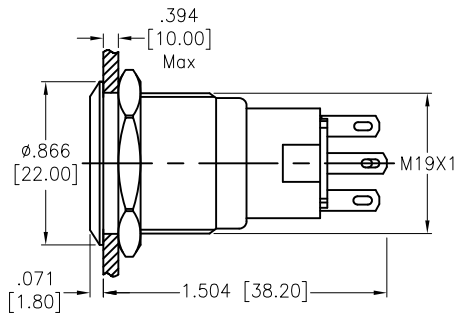
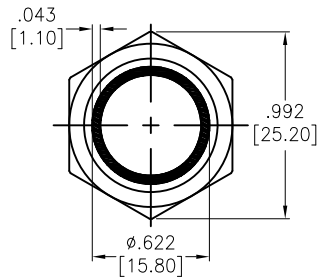


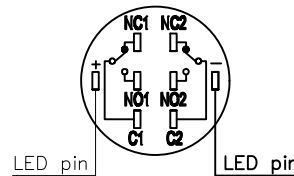
APPROVED: \_\_\_\_\_  
 DATE: \_\_\_\_\_ TITLE: \_\_\_\_\_

Rev	AWO #	Description	Date	Appr
-		RELEASED	11/2/21	

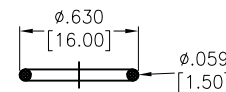
The shaded part is light design



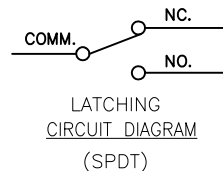
MAX.PANEL THICKNESS  
 RECOMMENDED PANEL CUT



Contact Composition



Seal Ring



LATCHING  
 CIRCUIT DIAGRAM  
 (SPDT)

SW-PB7-03LB22CFRXXXXX

"x"	LED Color	LED Voltage	
		6V	6V
R	Red	12V	12V AC/DC
G	Green	24V	24V AC/DC
Y	Yellow	110V	110V AC/DC
O	Orange	220V	220V AC/DC
B	Blue		
W	White		

SPECIFICATIONS:

Material:  
 Body: PBT, Rated UL94V-0  
 Bushing: Stainless Steel, Varnish polished  
 Button: Stainless Steel, Varnish polished  
 Contact Material: Silver Alloy, (2.8x0.5mm)  
 Nut: Brass, Nickel plated  
 Electrical:  
 Contact resistance: 50 mΩ max.  
 Insulation resistance: 1000M ohms min @ 500V DC.  
 Dielectric withstanding voltage: 1500V RMS, 50Hz.  
 Electrical Life: 50,000 cycles min at full load.  
 Mechanical:  
 Torque: 0.6Nm max.  
 Temperature Rating:  
 Operating temperature: -25°C to +55°C  
 Environmental:  
 Sealed IP67 Rated  
 Lead free, RoHS compliant



UNLESS OTHERWISE SPECIFIED ALL DIMENSIONS ARE INCHES [MM]. TOLERANCES: EXCEPT AS NOTED

INCHES		HOLES	
.X	± .10	Ø.X	± .10
.XX	± .020	Ø.XX	± .015
.XXX	± .015	Ø.XXX	± .010

**ADAM TECH**  
 909 Rahway Avenue,  
 Union, NJ 07083  
 Phone: 908-687-5000  
 Fax: 908-687-5710

DRAWN	WX	11/2/21
CHECKED	RC	11/2/21
APPROVED		

TITLE SWITCH, ANTI-VANDAL, PUSH BUTTON,  
 19mm, LIGHTED RING, SPDT,LATCHING, N.O.-N.C.

THIS DRAWING CONTAINS INFORMATION THAT IS PROPRIETARY AND SHOULD NOT BE USED WITHOUT PRIOR WRITTEN PERMISSION FROM ADAM TECH

SIZE	PART NO.	REV.
X	SW-PB7-03LB22CFRXXXXX	-
REF:	S00198T	SCALE: NTS SHEET 1 OF 1