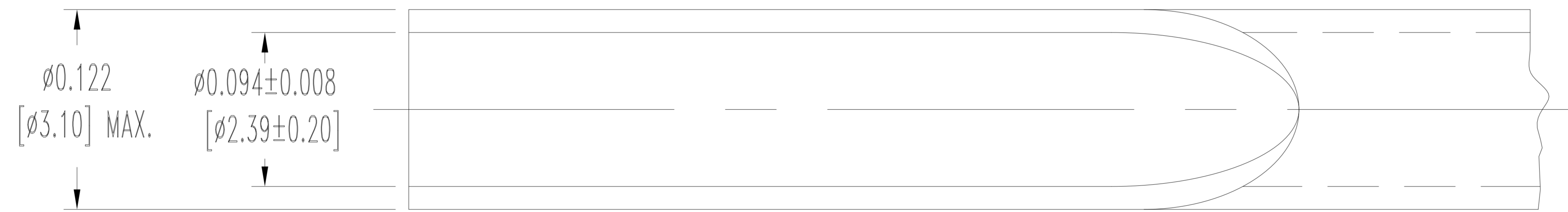
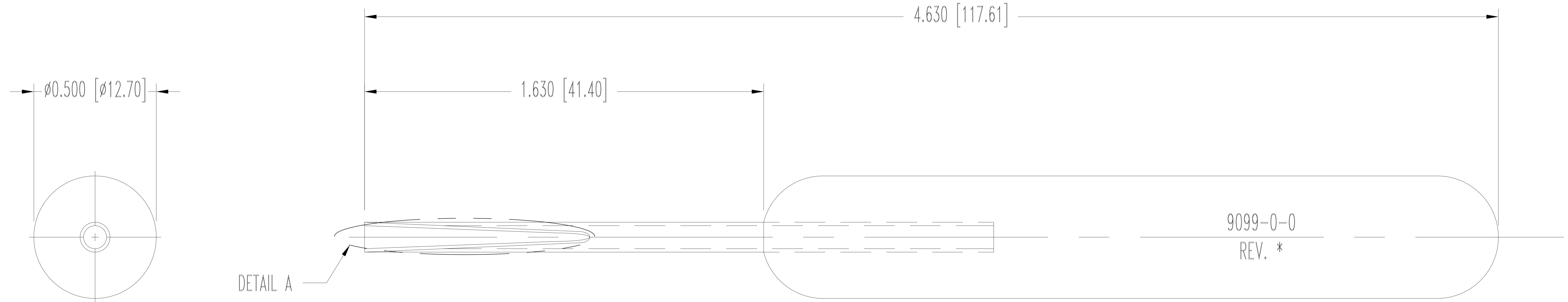


THIS DRAWING CONTAINS INFORMATION PROPRIETARY TO POSITRONIC AND IT'S SUBSIDIARIES. POSITRONIC BELIEVES THE DATA ON THIS DRAWING TO BE RELIABLE, SINCE THE TECHNICAL INFORMATION IS GIVEN FREE OF CHARGE, THE USER EMPLOYS SUCH INFORMATION AT HIS OWN DISCRETION AND RISK. POSITRONIC ASSUMES NO RESPONSIBILITY FOR RESULTS OBTAINED OR DAMAGES INCURRED FROM USE OF SUCH INFORMATION IN WHOLE OR IN PART.

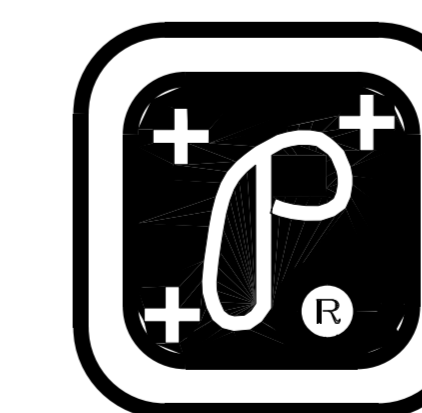
SK5955

DATE	REV	REVISION RECORD	APP	DR	CK
05-16 19	G	ECO 67082	RK	SM	ND

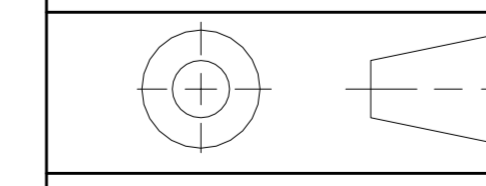


DETAIL A

NOTE:
1. DIMENSIONS ARE IN INCHES [MILLIMETERS].



POSITRONIC INDUSTRIES INC.
SPRINGFIELD, MISSOURI 65801



DECIMAL TOL.
 ± 0.015 [0.38]

ANGULAR TOL.
 \pm N/A

GMCT SERIES

TITLE

DATE

09-12-18

SCALE
N.T.S.

9099-0-0-0

DRAWING NUMBER

SK5955

DRAWN BY
JL

APPROVED BY

REV.

G