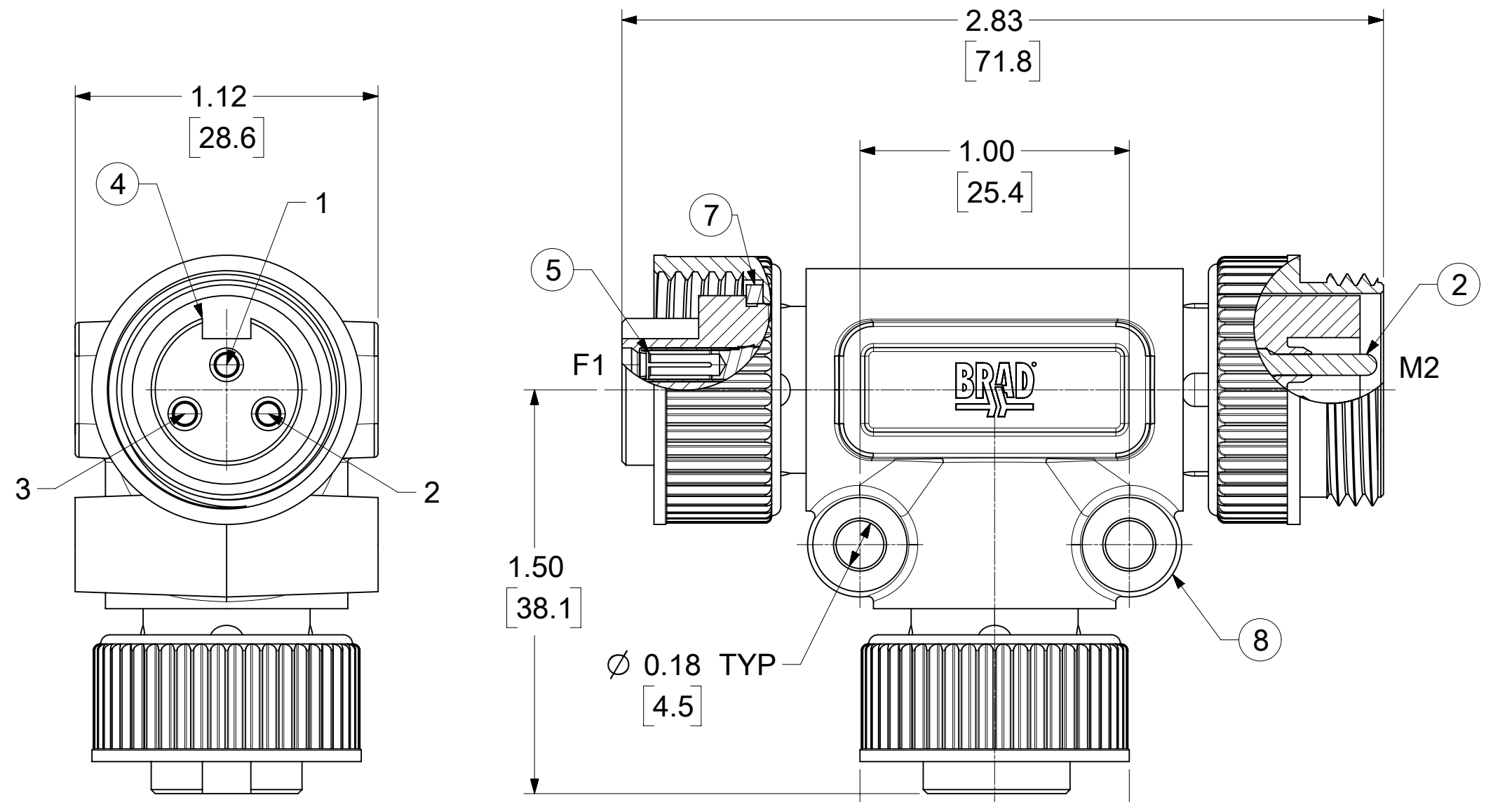
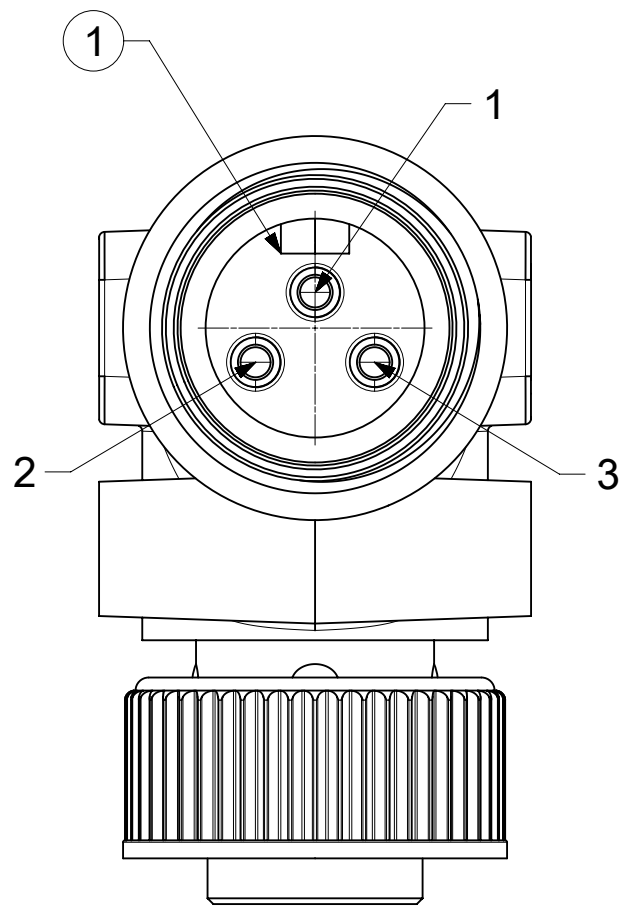


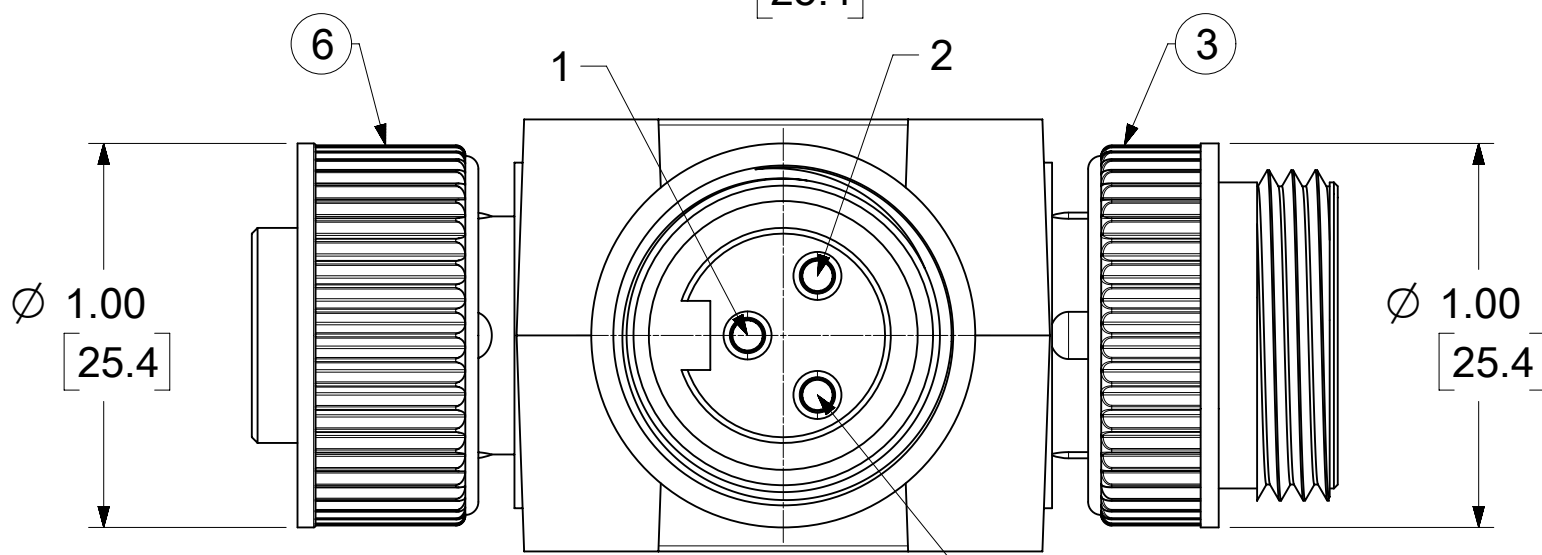
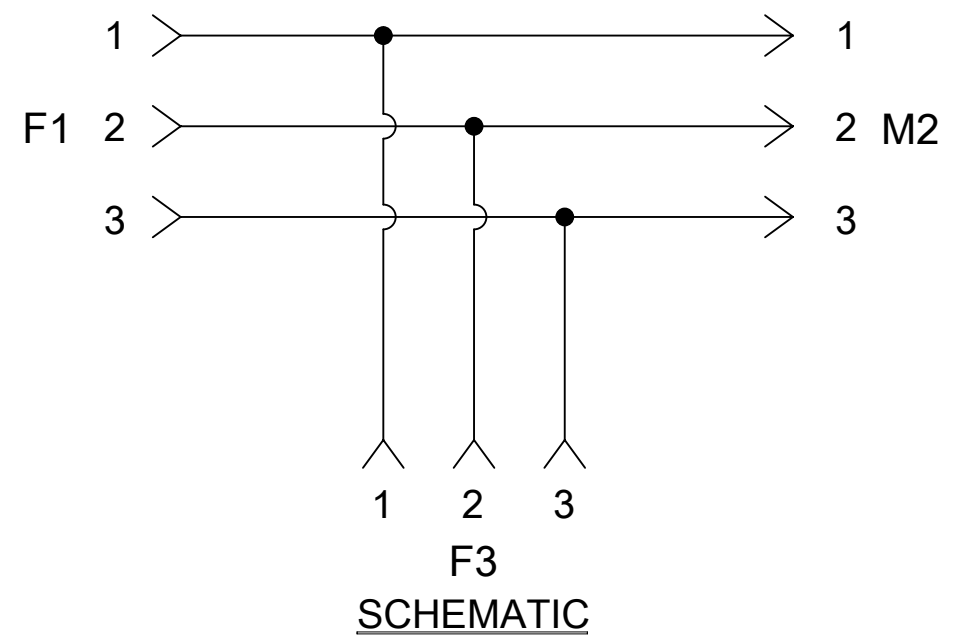
MATERIAL NO.	ENGINEERING NO.	OVERMOLD COLOR
1300180476	61056E	RED
1300180217	61056	YELLOW



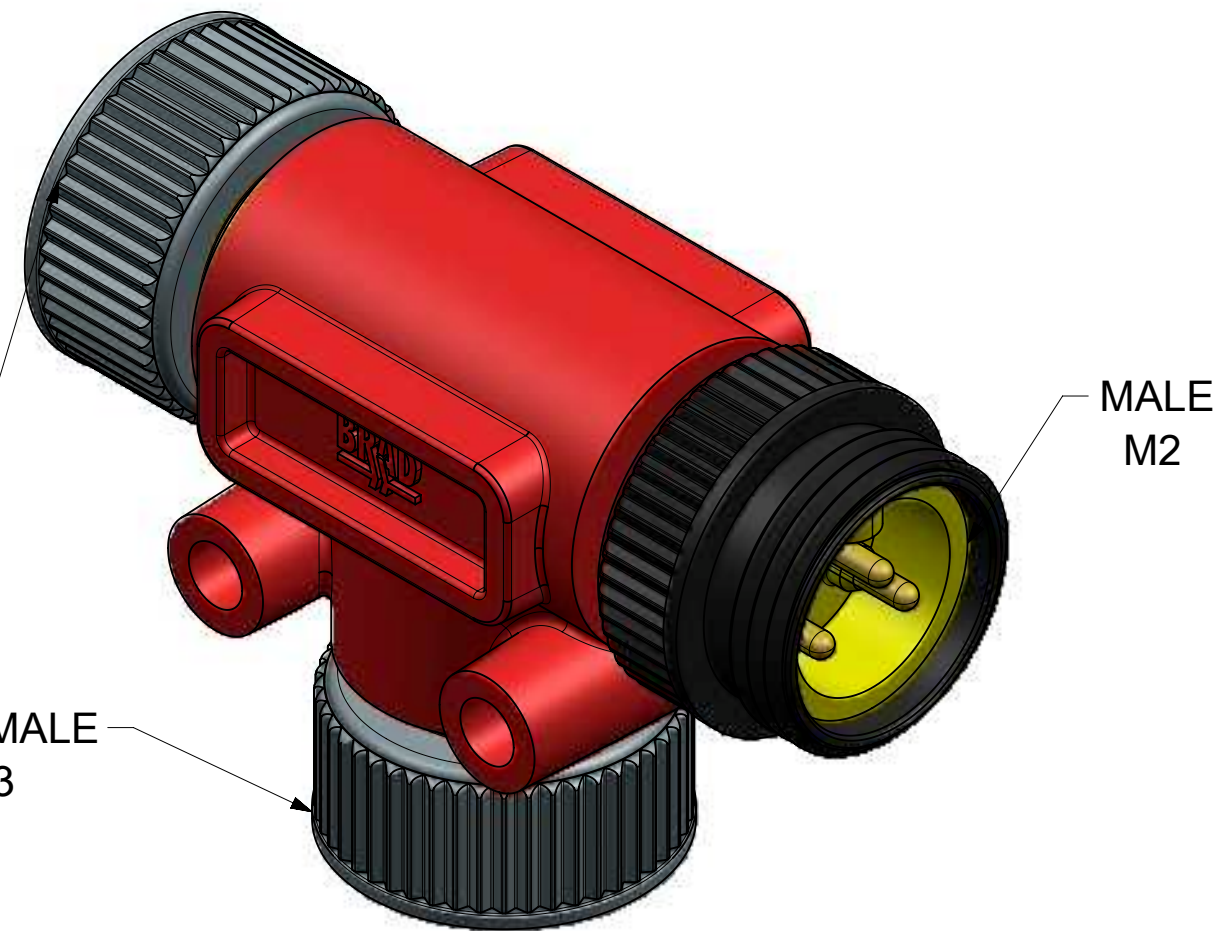
FEMALE FACE VIEW  
1 - GREEN  
2 - BLACK  
3 - WHITE



MALE FACE VIEW  
1 - GREEN  
2 - BLACK  
3 - WHITE



FEMALE FACE VIEW  
1 - GREEN  
2 - BLACK  
3 - WHITE



- NOTES:  
1. MATERIAL: AS NOTED  
2. FINISH: AS NOTED  
3. ELECTRICAL:  
VOLTAGE; 600V AC/DC  
CURRENT: 10A  
4. TEMP RATING: -20°C TO +80°C  
5. PROTECTION: IP67 (WHEN MATED)  
6. COUPLING THREADS: 7/8"-16UN  
7. ALL DIMS ARE FOR REFERENCE UNLESS NOTED OTHERWISE  
8. UL APPROVAL: PENDING

ITEM	DESCRIPTION	MATERIAL	FINISH
8	OVERMOLD	TPE	SEE TABLE
7	FRICTION RING	NYLON	NATURAL
6	FEMALE COUPLER	ZINC DIE CAST	BLACK E-COAT
5	CONTACT SOCKET	COPPER ALLOY	GOLD PLATED
4	FEMALE INSERT (A-SIZE)	TPE	YELLOW
3	MALE COUPLER	ZINC DIE CAST	BLACK E-COAT
2	CONTACT PIN	COPPER ALLOY	GOLD PLATED
1	MALE INSERT (A-SIZE)	TPE	YELLOW

THIS DOCUMENT SUPERSEDES DOC# SD-130018-006 REV A

SYMBOLS		THIS DRAWING CONTAINS INFORMATION THAT IS PROPRIETARY TO MOLEX ELECTRONIC TECHNOLOGIES, LLC AND SHOULD NOT BE USED WITHOUT WRITTEN PERMISSION	
▽ = 0	HYBRID	SCALE	2:1
▽ = 0	GENERAL TOLERANCES (UNLESS SPECIFIED)	CURRENT REV	DESC: UPDATE TO NX, ADD PN
▽ = 0	ANGULAR TOL ± °	EC NO:	620987
▽ = 0	4 PLACES ±	DRWN:	MZIELINSKI 2017/09/13
▽ = 0	3 PLACES ±	CHK'D:	MZIELINSKI 2019/07/19
▽ = 0	2 PLACES ±	APPR:	BWOODMAN 2019/07/19
▽ = 0	1 PLACE ±	INITIAL REVISION:	
▽ = 0	0 PLACES ±	DRWN:	MZIELINSKI 2017/09/13
▽ = 0	DRAFT WHERE APPLICABLE MUST REMAIN WITHIN DIMENSIONS	APPR:	BWOODMAN 2019/07/19
▽ = 0	THIRD ANGLE PROJECTION	DRAWING	C-SIZE
▽ = 0		SERIES	130018

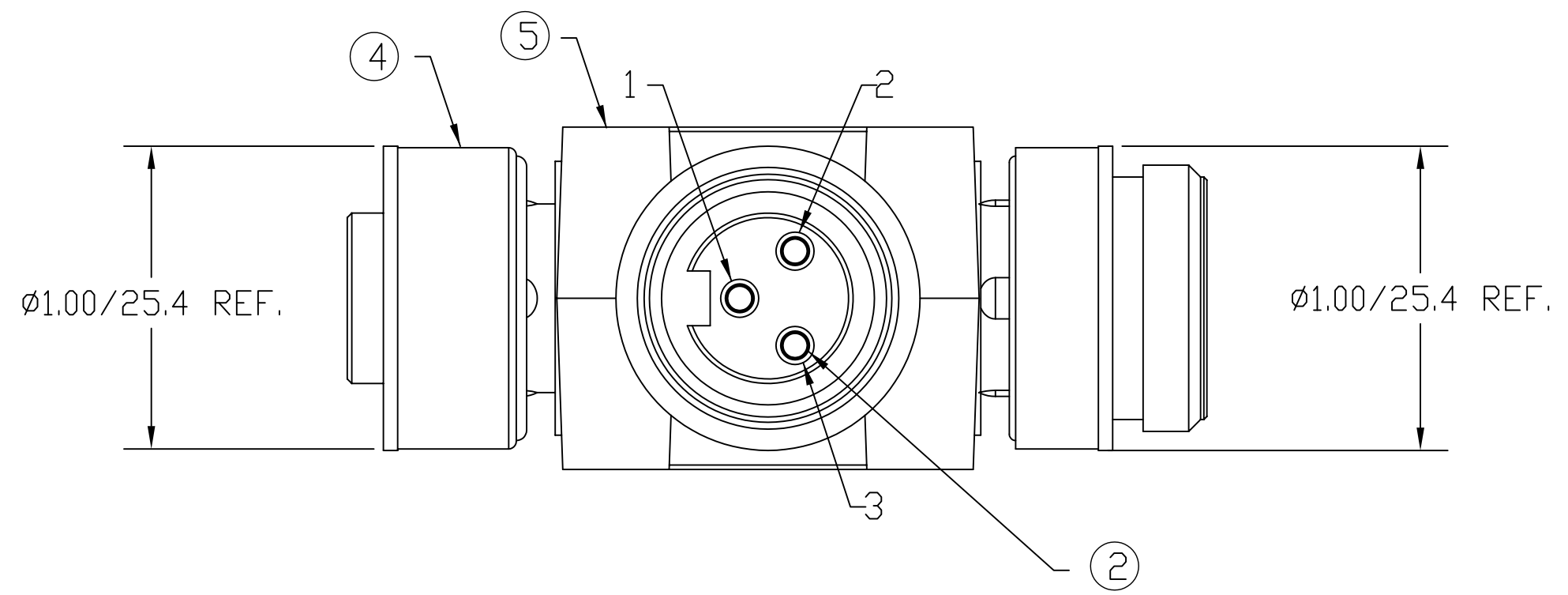
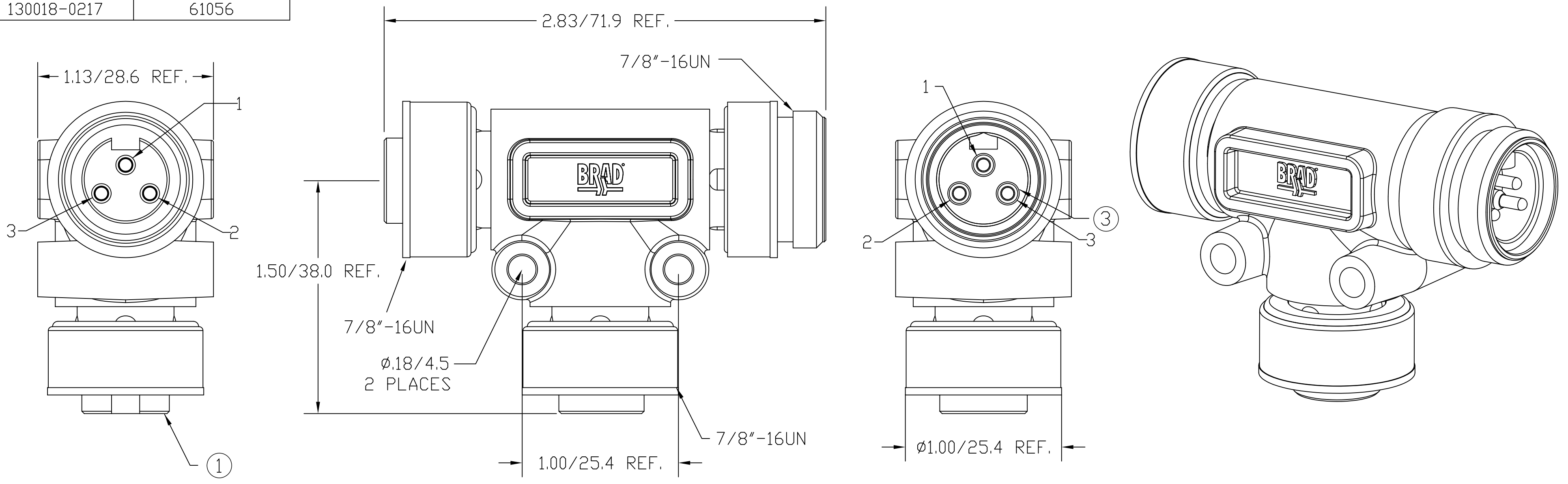


MC 3P TEE - 3-WIRE TAP RED OVM

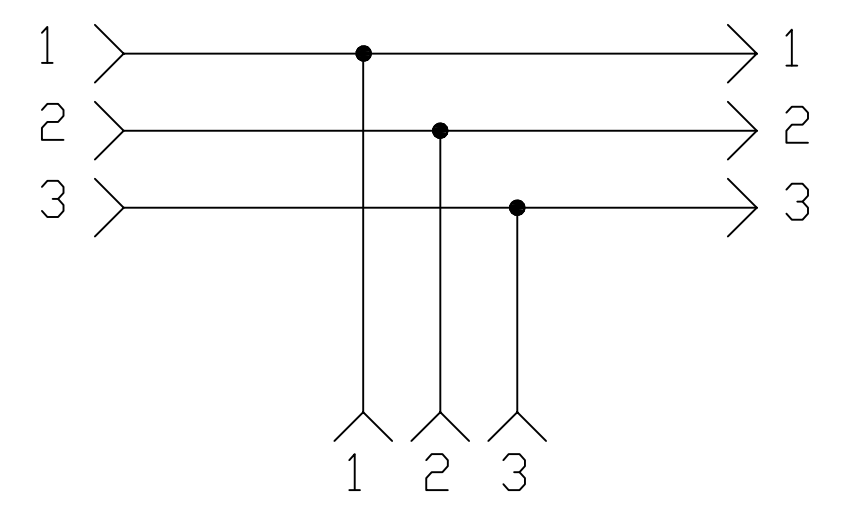
PRODUCT CUSTOMER DRAWING

DOCUMENT NUMBER	DOC TYPE	DOC PART	REVISION
1300180476	PSD	000	A

MATERIAL NUMBER	OLD PART NUMBER
130018-0217	61056



SCHEMATIC



VOLTAGE RATING	600 VAC/VDC
AMPERAGE RATING	10 AMPS
PROTECTION	IP67
OPERATING TEMPERATURE	-20°C TO 80°C
UL CERTIFICATIONS	UL RECOGNIZED, FILE NO. E152210
CSA CERTIFICATIONS	CSA CERTIFIED, FILE NO. LR6837

ITEM	COMPONENT	MATERIAL	FINISH
1	INSERT	TPE	YELLOW
2	CONTACT SOCKET	COPPER ALLOY	GOLD OVER NICKEL
3	CONTACT PIN	COPPER ALLOY	GOLD OVER NICKEL
4	COUPLING NUT	ZINC DIE CAST	BLACK E-COATED
5	OVERMOLD	TPE	YELLOW

RLSO DRAWING  
 EC NO: WNA2010-0430  
 DRWN: BWOODMAN2010/01/11  
 CH'KD: LHARTMAN  
 APPR: JFMURPHY 2010/01/15  
 DESCRIPTION  
 REV

	GENERAL TOLERANCES (UNLESS SPECIFIED)	
	mm	INCH
4 PLACES	±---	±---
3 PLACES	±---	±.005
2 PLACES	±0.13	±.010
1 PLACE	±0.25	±.020

ANGULAR ±1/2°  
 DRAFT WHERE APPLICABLE MUST REMAIN WITHIN DIMENSIONS

DIMENSION STYLE  
 IN/MM  
 DRAWN BY DATE  
 CHECKED BY DATE  
 LHMARTMAN 2010/01/11  
 APPROVED BY DATE  
 JFMURPHY 2010/01/15  
 MATERIAL NO.  
 1300350057

SCALE 1:1  
 DESIGN UNITS INCH  
 THIRD ANGLE PROJECTION  
**MINI-CHANGE 3-POLE TEE PARALLEL WIRING**  
**MOLEX INCORPORATED**  
 DOCUMENT NO. SD-130018-006  
 SHEET NO. 1 OF 1  
 THIS DRAWING CONTAINS INFORMATION THAT IS PROPRIETARY TO MOLEX INCORPORATED AND SHOULD NOT BE USED WITHOUT WRITTEN PERMISSION