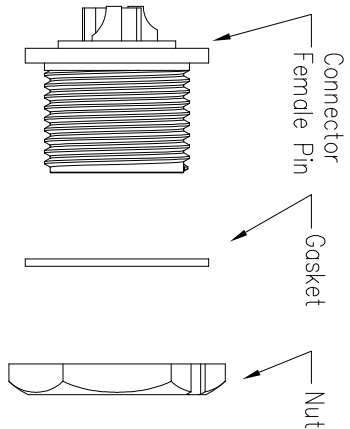
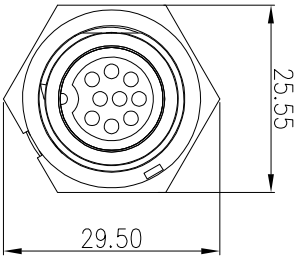
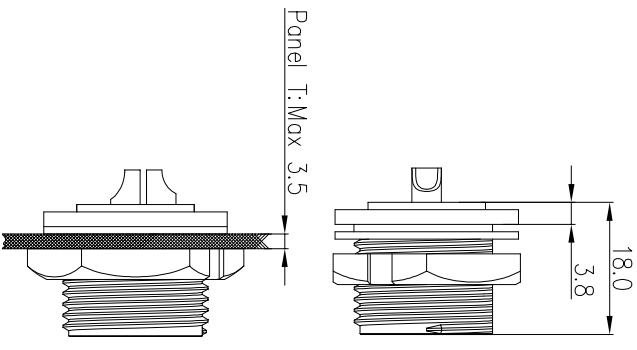
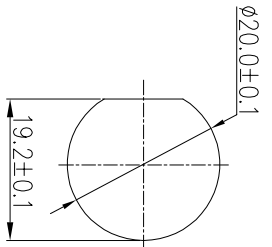


REV.	EN. NO.	DESCRIPTION	SIGN	DATE
C1	N/A	INITIAL DRAWING	Liu	2019/08/13



Specification:

1. Operation Temperature: -45°C~105°C.
2. Insulation Resistance: 100MΩ at DC500V.
3. Contact Resistance: <10mΩ.
4. Withstand Voltage: 1300V AC
5. Operating Current: 5A
6. Operating Voltage: AC 60V
7. Waterproof Rate: IP67 (Mated)
8. Housing: Nylon, Black
9. Female Pin: Copper Alloy, Gold Plated
10. Gasket: Silicon Gray
11. Panel Nut: Nylon, Black
12. Torque Rate: 0.8~1.0N•m
13. RoHS Compliant.
14. UL Compliant.
15. Mating Cap P/N: 806-00021-00

23XXX615-01
Pin Number

	7 Pin		8 Pin		9 Pin
P/N: 23007615-01		P/N: 23008615-01		P/N: 23009615-01	

Pin Assignments Front View		PART NO		23XXX615-01	
Middle Series Screw Front Mount With Female Pin		DWG NO			
DESCRIPTION		DRAWN BY		Liu	
SCALE: 1:1		CHECKED BY		Mo	
SHEET 1 OF 1		APPROVED BY		Pamson	
* : Inspection Item		DATE		2019/08/13	

UNIT: mm	
TOLERANCE	
.X	±0.25
.XX	±0.15
.XXX	±0.05
ANGLES	±1°

REV	C1	SIZE	A4	SHEET	1	OF	1
-----	----	------	----	-------	---	----	---

CHOGORI

DATE	2019/08/13
DATE	2019/08/13
DATE	2019/08/13