

Benötigte Hilfsmittel:

Stanley-Messer

Schere

Klemmwerkzeug (siehe Tabelle)

Gerade Verbinder für flexible Kabel
Kabeleinführung: SUHNER Voll-Klemmung

Verbinder Typen: (z. B.)

11UHF-0-3-17c 21UHF-0-3-1c	11UHF-0-4-14c 21UHF-0-4-1c	11UHF-0-7-21c 21UHF-0-7-6c	11UHF-0-7-17c 21UHF-0-7-2c
-------------------------------	-------------------------------	-------------------------------	-------------------------------

Dieser Verbinder wird in 3 losen Teilen geliefert

Geeignete Kabel:

RG 58 C/U

RG 59 B/U

RG 11 A/U

RG 213/U

Innenleiter:

Aussparung 2

Aussparung 2

Aussparung 2

Aussparung 3

Aussenleiter:

Aussparung B

Aussparung C

Aussparung D

Aussparung D

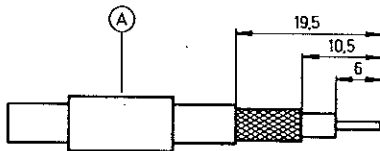
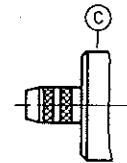
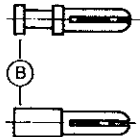
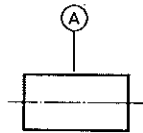
Klemmwerkzeug:

2B (orange)

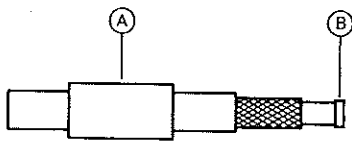
2C (gelb)

2D

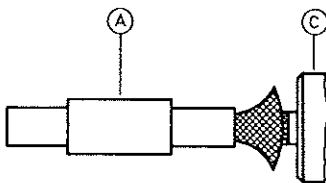
3D (violett)



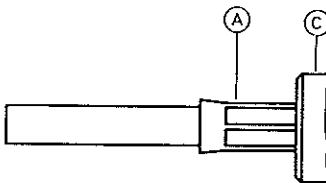
Hülse A auf das Kabel schieben.
Kabel gemäss Figur abisolieren.
ACHTUNG: Innenleiter, Abschirmung und Dielektrikum nicht beschädigen!



Kontakt B über Kabelinnenleiter bis zum Dielektrikum stossen und klemmen.



Abschirmung leicht aufspreizen und Kabel in Gehäuse C einführen.
Abschirmung muss über Klemmhals liegen.



Hülse A über Abschirmung schieben und möglichst nahe am Gehäuse C klemmen.

SUHNER verfügt über gut ausgebildete Fachkräfte und rationelle Einrichtungen zur Herstellung kompletter HF-Verbindungsleitungen. Wir montieren Ihre Verbinder zu wirtschaftlichen Preisen! Wenden Sie sich an unsere Vertreter.



HUBER+SUHNER AG

CH-9100 HERISAU

for English text see overleaf

Assembly instruction Series UHF E No. 3075

Tools and materials required:
 Stanley blade
 Scissors
 Crimp tool (see table below)

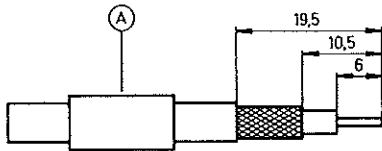
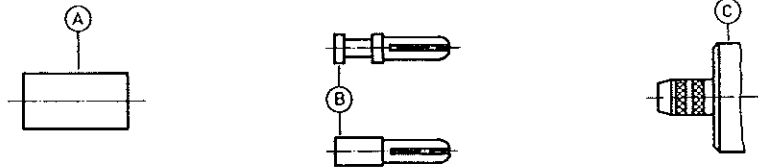
Straight connectors for flexible cable

Cable entry: SUHNER Full-Crimp

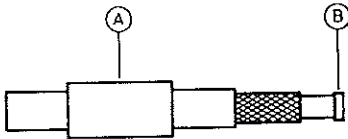
Connector types: (e. g.)

11UHF-0-3-17c	11UHF-0-4-14c	11UHF-0-7-21c	11UHF-0-7-17c
21UHF-0-3-1c	21UHF-0-4-1c	21UHF-0-7-6c	21UHF-0-7-2c

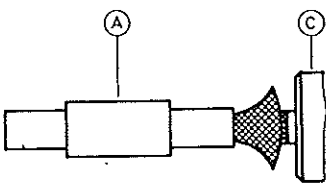
This connector is supplied in 3 parts	Suitable cables e. g.:	RG 58 C/U	RG 59 B/U	RG 11 A/U	RG 213/U
	Centre contact:	cavity 2	cavity 2	cavity 2	cavity 3
	Braid:	cavity B	cavity C	cavity D	cavity D
	Crimp tool:	2B (orange)	2C (yellow)	2D	3D (violett)



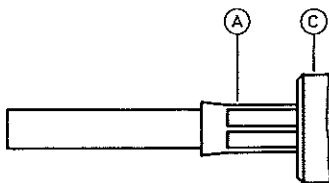
Slide ferrule A onto cable.
 Prepare cable according to diagram.
CAUTION: Do not damage braid and inner conductor of cable!



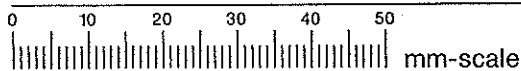
Push contact B over inner conductor of cable to abut cable dielectric and crimp.



Splay out braid and insert cable in connector body C.
 Ensure that braid lies above the crimp neck.



Slide ferrule A over braid and crimp as close to connector body C as possible.



SUHNER's skilled staff and specialised equipment are available to carry out complete R. F. lead-assembly on your behalf. We mount your connectors on cables at economic prices! Please contact our representative for further details of this service.



HUBER+SUHNER LTD. CH-9100 HERISAU

Deutscher Text: siehe Rückseite