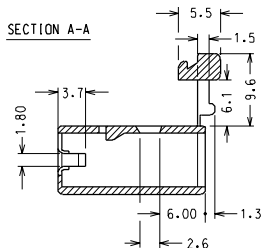
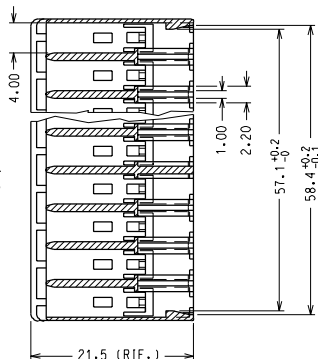
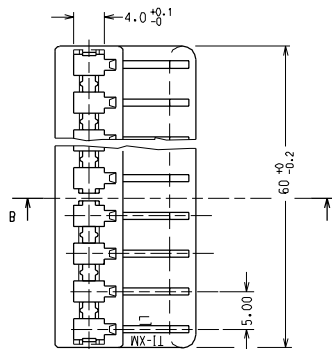
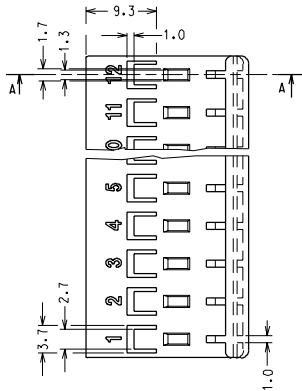
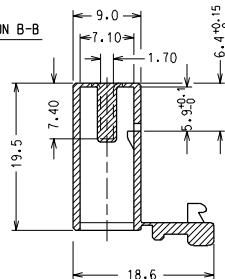


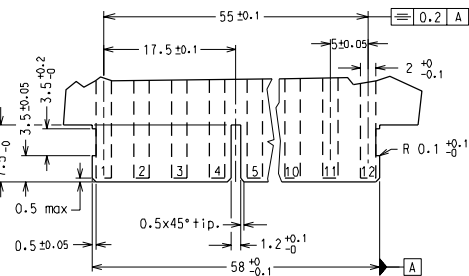
SECTION A-A



SECTION B-B



DIMA 12 VIE PER C.S. spess. 1.5±0.1
VISTA LATO COMPONENTI
RECOMMENDED PCB LAYOUT, PCB THICK.: 1.5±0.1
VIEW FROM COMPONENT SIDE



MATERIALE: NYLON 66 NERO V2, GWT 850 °C
MATERIAL: NYLON 66 BLACK V2, GWT 850 °C

NOTA: LE DIMENSIONI VANNO MISURATE CON CORPI
STABILIZZATI SECONDO NG 2301.
(AUMENTO IN PESO DEL 2.7 %)

NOTE: PARTS SHALL BE DIMENSIONALLY CHECKED AFTER
ATTAINING EQUILIBRIUM CONDITIONS E.G. 27 % INCREASE
IN WEIGHT FOR HUMIDITY ABSORPTION FROM DRY STATUS.

CARATTERISTICHE PRODOTTO SECONDO PS-94529
PRODUCT CHARACTERISTICS ACCORDING TO PS-94529 E

CONFEZIONE: 1800 pz in scatola
PACKAGING: 1800 pcs in carton box

SPQ: 1800 pz.

Descr.Std: HSG FOR FORK TERMINAL 12 CKT

REV	QUALITY SYMBOLS	GENERAL TOLERANCES: (UNLESS SPECIFIED)		SCALE	DESIGN UNITS	FIRST ANGLE PROJECTION	DIMENSIONS:			SHT	REV
		mm	INCH	2:1	mm □ INCH		mm	INCH	mm		
A1	MAJOR M = SIGNIF. S = CRITICAL C =	4 PLACES ±0.1		mm	INCH	DRAWN BY & DATE F. Gotardo 25-01-00 CHECKED BY & DATE M. Testaguzza 25-01-00 APPROVED BY & DATE R. Martucci 25-01-00	<input type="checkbox"/> mm <input type="checkbox"/> INCH <input checked="" type="checkbox"/> mm			1	/1
		3 PLACES ±0.1					<input type="checkbox"/> mm <input type="checkbox"/> INCH <input checked="" type="checkbox"/> mm				
		2 PLACES ±0.10					<input type="checkbox"/> mm <input type="checkbox"/> INCH <input checked="" type="checkbox"/> mm				
		1 PLACE ±0.20					<input type="checkbox"/> mm <input type="checkbox"/> INCH <input checked="" type="checkbox"/> mm				
		ANGULAR ± 2°					<input type="checkbox"/> mm <input type="checkbox"/> INCH <input checked="" type="checkbox"/> mm				
DRAFT WHERE APPLICABLE MUST REMAIN WITHIN DIMENSIONS				CAD FILENAME		MATERIAL NO.		DRAWING NO.		SHEET NO.	
				94529017.dgn		94529-8212		SD-94529-017		1 / 1	
THIS DRAWING CONTAINS INFORMATION THAT IS PROPRIETARY TO MOLEX INCORPORATED AND SHOULD NOT BE USED WITHOUT WRITTEN PERMISSION.											
										SIZE A3	

EC NO. Z2000-0099
DRWN: F. Gotardo 13-02-01
CHK: M. Testaguzza 13-02-01
APPR: R. Martucci 13-02-01

MAJOR M =
SIGNIF. S =
CRITICAL C =

QUALITY SYMBOLS

GENERAL TOLERANCES:
(UNLESS SPECIFIED)

SCALE 2:1
DESIGN UNITS mm □ INCH

FIRST ANGLE PROJECTION

DIMENSIONS: mm INCH mm

SHT REV 1 / 1

Descr.Std: HSG FOR FORK TERMINAL 12 CKT

TITLE: HOUSING 12 VIE PER CONTATTO A FORCELLA DIRITTO - POL. 4/5
12 CKT HOUSING FOR STRAIGHT FORK TERMINAL - POL. 4/5

MATERIAL NO. 94529-8212
DRAWING NO. SD-94529-017
SHEET NO. 1 / 1

THIS DRAWING CONTAINS INFORMATION THAT IS PROPRIETARY TO MOLEX INCORPORATED AND SHOULD NOT BE USED WITHOUT WRITTEN PERMISSION.

SIZE A3