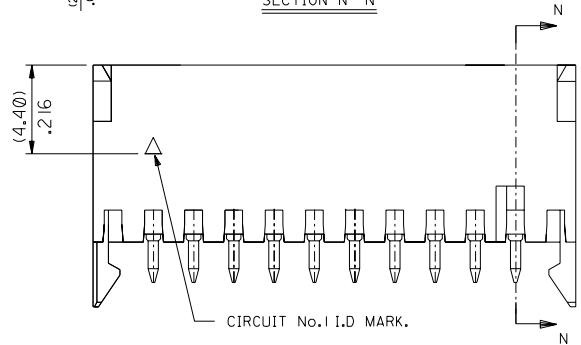
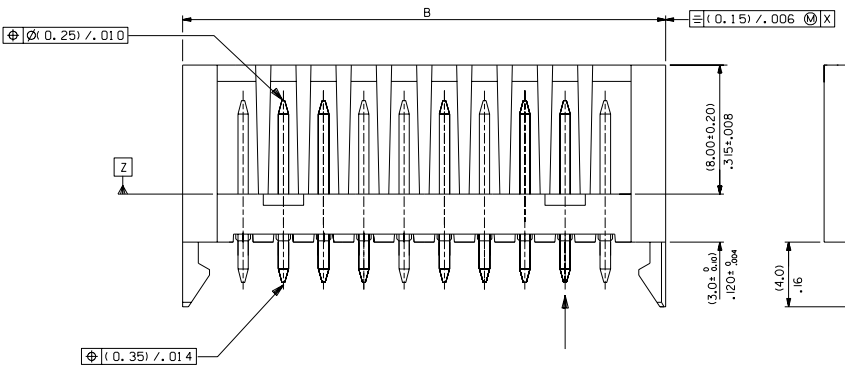
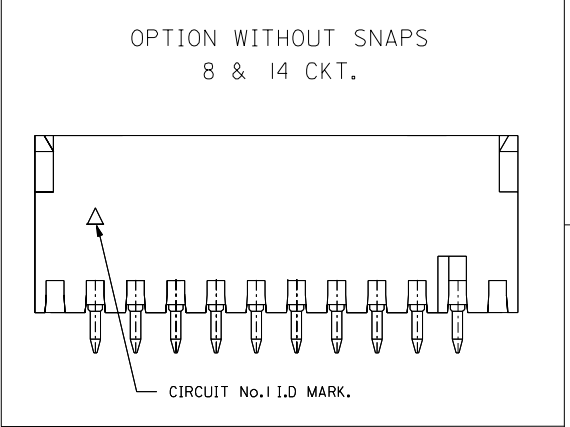
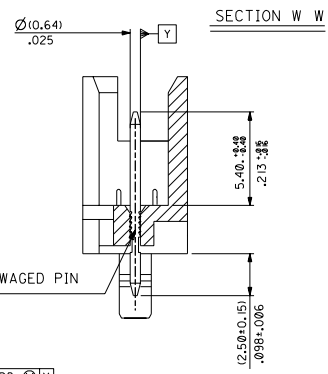
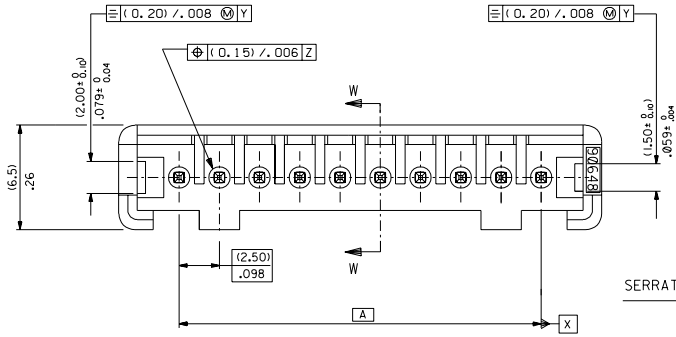
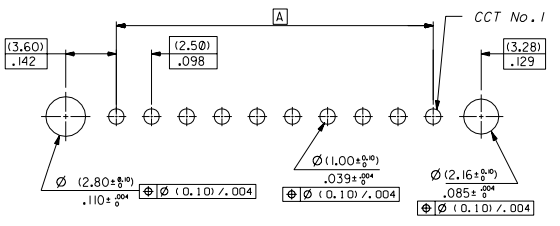


PART NO. SEE CHART  
 DWG. NO. SDA-90648



**RECOMMENDED P.C.B. HOLE LAYOUT**

PCB LAYOUT : COMPONENT SIDE  
 PCB THICKNESS 1.50 TO 1.60.



**NOTES :**

- MATERIAL  
 HEADER (2-6 CIRCUIT) : POLYESTER, UL 94V-0, G.E VALOX 310-SE0.  
 HEADER (7-20 CIRCUIT) : 15% GF NATURAL (WHITE) POLYESTER, RATED UL 94V-0  
 PINS: BRASS, PLATING: (3um)/.118uin MIN. TIN  
 TO 95/5 OVER (2um)/.078uin MIN. COPPER OR NICKEL.
- FOR ALL UNSTATED DIMENSIONS SEE SHEET 2.
- PIN PUSH OUT FORCE 35N MIN. IN DIRECTION OF ARROW Z.
- OPTIONS ADDED: 8 & 14ckt. WITHOUT SNAPS.

2	C
1	E

MODIFIED DIMS EC NO. E2004-1138 DRWN: DBYRNES 18/05/04 CHK: BMAGUIRE 06/04/10 APPR: BMAGUIRE 06/04/10	QUALITY SYMBOLS MAJOR = CRITICAL =	GENERAL TOLERANCES: (UNLESS SPECIFIED)		SCALE 5:1	DESIGN UNITS <input type="checkbox"/> mm <input type="checkbox"/> INCH	THIRD ANGLE PROJECTION 	DIMENSIONS: <input checked="" type="checkbox"/> mm <input type="checkbox"/> INCH <input type="checkbox"/> mm <input type="checkbox"/> ONLY	SHT 2	REV C
		4 PLACES ±0. ±. 3 PLACES ±0. ±.006 2 PLACES ±0. 0.15 ±.008 1 PLACE ±0. 0.25 ±. ANGULAR: ± 2°	DRAWN BY & DATE POB 13/10/90	TITLE: 2.5mm PITCH P.C.B. HEADER ASSEMBLY BOARD TO BOARD		CHECKED BY & DATE BMAGUIRE 13/10/90	APPROVED BY & DATE BMAGUIRE 13/10/90		MOLEX INCORPORATED
DRAFT WHERE APPLICABLE MUST REMAIN WITHIN DIMENSIONS	CAD FILENAME S90648X1.DGN		MATERIAL NO. SEE CHART	DRAWING NO. SDA-90648	SHEET NO. 1 OF 2		THIS DRAWING CONTAINS INFORMATION THAT IS PROPRIETARY TO MOLEX INCORPORATED AND SHOULD NOT BE USED WITHOUT WRITTEN PERMISSION.		SIZE B

	10	9	8	7	6	5	4	3	2	1																																																																																				
F	<table border="1"> <tr> <td>PART NO. SEE CHART</td> <td colspan="9">SDA-90648</td> </tr> <tr> <td>DWG. NO.</td> <td colspan="9"></td> </tr> </table>										PART NO. SEE CHART	SDA-90648									DWG. NO.																																																																									
PART NO. SEE CHART	SDA-90648																																																																																													
DWG. NO.																																																																																														
E	<table border="1"> <thead> <tr> <th>CCT SIZE</th> <th>PART NUMBER WITH SNAP-IN LATCHES</th> <th>A</th> <th>B</th> </tr> <tr> <td></td> <td></td> <td></td> <td>± 0.25 0.010</td> </tr> </thead> <tbody> <tr><td>■</td><td>90648-1002</td><td>(2.50)/.098</td><td>(10.00)/.394</td></tr> <tr><td>■</td><td>-1003</td><td>(5.00)/.197</td><td>(12.50)/.492</td></tr> <tr><td>■</td><td>-1004</td><td>(7.50)/.295</td><td>(15.00)/.591</td></tr> <tr><td>■</td><td>-1005</td><td>(10.00)/.394</td><td>(17.50)/.689</td></tr> <tr><td>■</td><td>-1006</td><td>(12.50)/.492</td><td>(20.00)/.787</td></tr> <tr><td>■</td><td>-1007</td><td>(15.00)/.591</td><td>(22.50)/.886</td></tr> <tr><td>■</td><td>-1008</td><td>(17.50)/.689</td><td>(25.00)/.984</td></tr> <tr><td>■</td><td>-1009</td><td>(20.00)/.787</td><td>(27.50)/1.083</td></tr> <tr><td>10</td><td>-1010</td><td>(22.50)/.886</td><td>(30.00)/1.181</td></tr> <tr><td>11</td><td>-1011</td><td>(25.00)/.984</td><td>(32.50)/1.280</td></tr> <tr><td>12</td><td>-1012</td><td>(27.50)/1.083</td><td>(35.00)/1.378</td></tr> <tr><td>13</td><td>-1013</td><td>(30.00)/1.181</td><td>(37.50)/1.476</td></tr> <tr><td>14</td><td>-1014</td><td>(32.50)/1.280</td><td>(40.00)/1.575</td></tr> <tr><td>15</td><td>-1015</td><td>(35.00)/1.378</td><td>(42.50)/1.673</td></tr> <tr><td>16</td><td>-1016</td><td>(37.50)/1.476</td><td>(45.00)/1.772</td></tr> <tr><td>17</td><td>-1017</td><td>(40.00)/1.575</td><td>(47.50)/1.870</td></tr> <tr><td>18</td><td>-1018</td><td>(42.50)/1.673</td><td>(50.00)/1.969</td></tr> <tr><td>19</td><td>-1019</td><td>(45.00)/1.772</td><td>(52.50)/2.067</td></tr> <tr><td>20</td><td>-1020</td><td>(47.50)/1.870</td><td>(55.00)/2.165</td></tr> </tbody> </table>										CCT SIZE	PART NUMBER WITH SNAP-IN LATCHES	A	B				± 0.25 0.010	■	90648-1002	(2.50)/.098	(10.00)/.394	■	-1003	(5.00)/.197	(12.50)/.492	■	-1004	(7.50)/.295	(15.00)/.591	■	-1005	(10.00)/.394	(17.50)/.689	■	-1006	(12.50)/.492	(20.00)/.787	■	-1007	(15.00)/.591	(22.50)/.886	■	-1008	(17.50)/.689	(25.00)/.984	■	-1009	(20.00)/.787	(27.50)/1.083	10	-1010	(22.50)/.886	(30.00)/1.181	11	-1011	(25.00)/.984	(32.50)/1.280	12	-1012	(27.50)/1.083	(35.00)/1.378	13	-1013	(30.00)/1.181	(37.50)/1.476	14	-1014	(32.50)/1.280	(40.00)/1.575	15	-1015	(35.00)/1.378	(42.50)/1.673	16	-1016	(37.50)/1.476	(45.00)/1.772	17	-1017	(40.00)/1.575	(47.50)/1.870	18	-1018	(42.50)/1.673	(50.00)/1.969	19	-1019	(45.00)/1.772	(52.50)/2.067	20	-1020	(47.50)/1.870	(55.00)/2.165
CCT SIZE	PART NUMBER WITH SNAP-IN LATCHES	A	B																																																																																											
			± 0.25 0.010																																																																																											
■	90648-1002	(2.50)/.098	(10.00)/.394																																																																																											
■	-1003	(5.00)/.197	(12.50)/.492																																																																																											
■	-1004	(7.50)/.295	(15.00)/.591																																																																																											
■	-1005	(10.00)/.394	(17.50)/.689																																																																																											
■	-1006	(12.50)/.492	(20.00)/.787																																																																																											
■	-1007	(15.00)/.591	(22.50)/.886																																																																																											
■	-1008	(17.50)/.689	(25.00)/.984																																																																																											
■	-1009	(20.00)/.787	(27.50)/1.083																																																																																											
10	-1010	(22.50)/.886	(30.00)/1.181																																																																																											
11	-1011	(25.00)/.984	(32.50)/1.280																																																																																											
12	-1012	(27.50)/1.083	(35.00)/1.378																																																																																											
13	-1013	(30.00)/1.181	(37.50)/1.476																																																																																											
14	-1014	(32.50)/1.280	(40.00)/1.575																																																																																											
15	-1015	(35.00)/1.378	(42.50)/1.673																																																																																											
16	-1016	(37.50)/1.476	(45.00)/1.772																																																																																											
17	-1017	(40.00)/1.575	(47.50)/1.870																																																																																											
18	-1018	(42.50)/1.673	(50.00)/1.969																																																																																											
19	-1019	(45.00)/1.772	(52.50)/2.067																																																																																											
20	-1020	(47.50)/1.870	(55.00)/2.165																																																																																											
D	<table border="1"> <thead> <tr> <th>CCT SIZE</th> <th>PART NUMBER WITHOUT SNAP-IN LATCHES</th> <th>A</th> <th>B</th> </tr> <tr> <td></td> <td></td> <td></td> <td>± 0.25 0.010</td> </tr> </thead> <tbody> <tr><td>■</td><td>90648-2008</td><td>(17.50)/.689</td><td>(25.00)/.984</td></tr> <tr><td>14</td><td>-2014</td><td>(32.50)/1.280</td><td>(40.00)/1.575</td></tr> </tbody> </table>										CCT SIZE	PART NUMBER WITHOUT SNAP-IN LATCHES	A	B				± 0.25 0.010	■	90648-2008	(17.50)/.689	(25.00)/.984	14	-2014	(32.50)/1.280	(40.00)/1.575																																																																				
CCT SIZE	PART NUMBER WITHOUT SNAP-IN LATCHES	A	B																																																																																											
			± 0.25 0.010																																																																																											
■	90648-2008	(17.50)/.689	(25.00)/.984																																																																																											
14	-2014	(32.50)/1.280	(40.00)/1.575																																																																																											
C	<p>90648 - 20**</p> <p>WITHOUT SNAP-IN LATCHES ———— CIRCUIT SIZE</p>																																																																																													
B	<p>90648 - 10**</p> <p>WITH SNAP-IN LATCHES ———— CIRCUIT SIZE</p>																																																																																													
A	<table border="1"> <tr> <td rowspan="2">SEE SHEET 1</td> <td rowspan="2">REVISIONS</td> <td colspan="2">DIMENSIONS SHOWN ( METRIC ) INCH</td> <td>DRWG BY</td> <td colspan="2">POB</td> <td colspan="2">REVISE ONLY ON CAD SYSTEM</td> <td>SH.</td> <td>REV.</td> </tr> <tr> <td colspan="2">UNLESS OTHERWISE SPECIFIED TOLERANCES: ANGULAR ± 1/2</td> <td>CHK'D BY</td> <td colspan="2">THIS DRAWING CONTAINS INFORMATION THAT IS PROPRIETARY TO MOLEX INC. &amp; SHOULD NOT BE USED WITHOUT WRITTEN PERMISSION</td> <td colspan="2">TITLE</td> <td colspan="2"></td> </tr> <tr> <td rowspan="2">C</td> <td rowspan="2">LTR</td> <td colspan="2">INCH ( METRIC )</td> <td>APP'D BY</td> <td colspan="2">SCALE</td> <td colspan="2">TITLE</td> <td colspan="2"></td> </tr> <tr> <td>3 PLACE ± --</td> <td>± --</td> <td></td> <td>--</td> <td colspan="2">2.5mm PITCH P.C.B HEADER ASSEMBLY BOARD TO BOARD</td> <td colspan="2"></td> </tr> <tr> <td colspan="2"></td> <td colspan="2">DRAFT WHERE APPLICABLE MUST REMAIN WITHIN DIMENSIONS</td> <td colspan="2"></td> <td colspan="2">MOLEX EUROPE</td> <td>SHEET NO.</td> <td colspan="2">DATE</td> </tr> <tr> <td colspan="2"></td> <td>DESIGN DIMENSION (PRIMARY)</td> <td><input checked="" type="checkbox"/> (MM) <input type="checkbox"/> IN.</td> <td colspan="2"></td> <td colspan="2">SEE CHART</td> <td>20F</td> <td colspan="2">13/10/90</td> </tr> <tr> <td colspan="2"></td> <td>EQUIVALENT DIMENSION (SECONDARY)</td> <td><input type="checkbox"/> (MM) <input checked="" type="checkbox"/> IN.</td> <td colspan="2"></td> <td colspan="2">PART NO.</td> <td colspan="2">DWG NO.</td> <td>SIZE</td> </tr> <tr> <td colspan="2"></td> <td colspan="2"></td> <td colspan="2"></td> <td colspan="2">SDA-90648</td> <td colspan="2"></td> <td>B</td> </tr> </table>										SEE SHEET 1	REVISIONS	DIMENSIONS SHOWN ( METRIC ) INCH		DRWG BY	POB		REVISE ONLY ON CAD SYSTEM		SH.	REV.	UNLESS OTHERWISE SPECIFIED TOLERANCES: ANGULAR ± 1/2		CHK'D BY	THIS DRAWING CONTAINS INFORMATION THAT IS PROPRIETARY TO MOLEX INC. & SHOULD NOT BE USED WITHOUT WRITTEN PERMISSION		TITLE				C	LTR	INCH ( METRIC )		APP'D BY	SCALE		TITLE				3 PLACE ± --	± --		--	2.5mm PITCH P.C.B HEADER ASSEMBLY BOARD TO BOARD						DRAFT WHERE APPLICABLE MUST REMAIN WITHIN DIMENSIONS				MOLEX EUROPE		SHEET NO.	DATE				DESIGN DIMENSION (PRIMARY)	<input checked="" type="checkbox"/> (MM) <input type="checkbox"/> IN.			SEE CHART		20F	13/10/90				EQUIVALENT DIMENSION (SECONDARY)	<input type="checkbox"/> (MM) <input checked="" type="checkbox"/> IN.			PART NO.		DWG NO.		SIZE							SDA-90648				B	
SEE SHEET 1	REVISIONS	DIMENSIONS SHOWN ( METRIC ) INCH		DRWG BY	POB		REVISE ONLY ON CAD SYSTEM		SH.	REV.																																																																																				
		UNLESS OTHERWISE SPECIFIED TOLERANCES: ANGULAR ± 1/2		CHK'D BY	THIS DRAWING CONTAINS INFORMATION THAT IS PROPRIETARY TO MOLEX INC. & SHOULD NOT BE USED WITHOUT WRITTEN PERMISSION		TITLE																																																																																							
C	LTR	INCH ( METRIC )		APP'D BY	SCALE		TITLE																																																																																							
		3 PLACE ± --	± --		--	2.5mm PITCH P.C.B HEADER ASSEMBLY BOARD TO BOARD																																																																																								
		DRAFT WHERE APPLICABLE MUST REMAIN WITHIN DIMENSIONS				MOLEX EUROPE		SHEET NO.	DATE																																																																																					
		DESIGN DIMENSION (PRIMARY)	<input checked="" type="checkbox"/> (MM) <input type="checkbox"/> IN.			SEE CHART		20F	13/10/90																																																																																					
		EQUIVALENT DIMENSION (SECONDARY)	<input type="checkbox"/> (MM) <input checked="" type="checkbox"/> IN.			PART NO.		DWG NO.		SIZE																																																																																				
						SDA-90648				B																																																																																				
	10	9	8	7	6	5	4	3	2	1																																																																																				