

NOTES:

1. MINIMUM PUSHOUT FORCE: .5 LB.
2. NOTE DELETED.
3. Ⓢ REPRESENTS A CRITICAL DIMENSION.
4. NOTE DELETED.
5. DUE TO THE HIGH AMOUNT OF INSERTION FORCE NEEDED, THE -LC OPTION IS NOT COMPATIBLE WITH AUTO PLACEMENT. SAMTEC RECOMMENDS MANUAL PLACEMENT FOR ALL ASSEMBLIES WITH THE -LC OPTION.
6. TO BE MEASURED FROM A DATUM LINE MADE BY THE INSULATOR.

DO NOT SCALE FROM THIS PRINT

SFMH-1XX-XX-XXX-D-XX-XX

No OF POSITIONS PER ROW

-05 THRU -50

LEAD STYLE

-02

PACKAGING OPTIONS

-TR: TAPE & REEL

OPTIONS

-LC: LOCKING CLIP (SEE FIG 1, SHT 1)  
(NOT AVAILABLE W/ -WT OPTION)  
(SEE NOTE 5)

\* -SL: SOLDER LOCK (SEE FIG 2, SHT 2)

-WT: WELD TAB (SEE FIG. 3, SHT 2)  
(NOT AVAILABLE W/ -LC OPTION)  
(AVAILABLE ON POSITIONS -05 THRU -30)

ROW SPECIFICATION

-D: DOUBLE ROW

\* NOT TOOLED

PLATING SPECIFICATION

(VALUES GIVEN ARE IN MICRO-INCHES)

-L: 10μ" GOLD IN CONTACT AREA, GOLD FLASH ON TAIL  
(USE C-108-G & C-109-G)

-F: 3μ" GOLD IN CONTACT AREA, GOLD FLASH ON TAIL  
(USE C-108-FG & C-109-FG)

-S: 30μ" GOLD IN CONTACT AREA, MATTE TIN ON TAIL  
(USE C-108-S & C-109-S)

-LM: 10μ" GOLD IN CONTACT AREA, MATTE TIN ON TAIL  
(USE C-108-LM & C-109-LM)

-STL: 30μ" GOLD IN CONTACT AREA,  
TIN/LEAD ((90/10+/-5%)TAIL

(USE C-108-STL & C-109-STL)

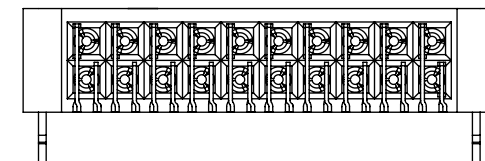
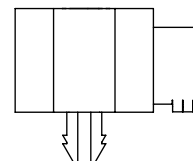
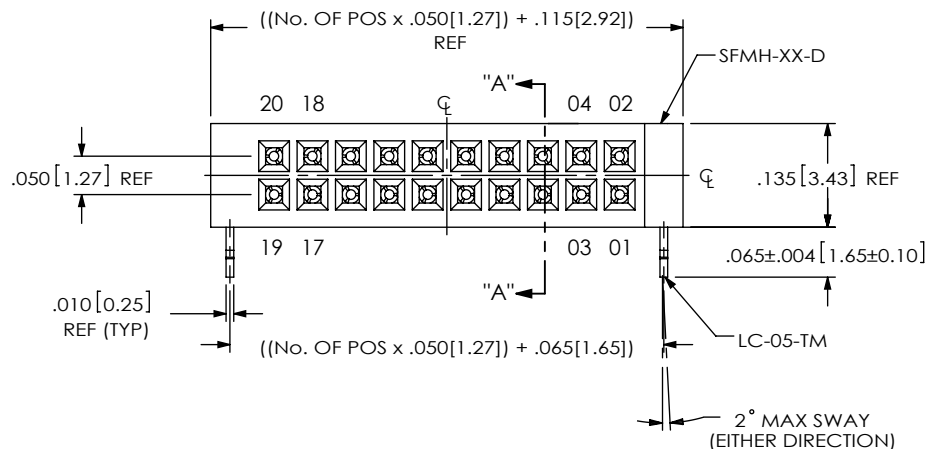
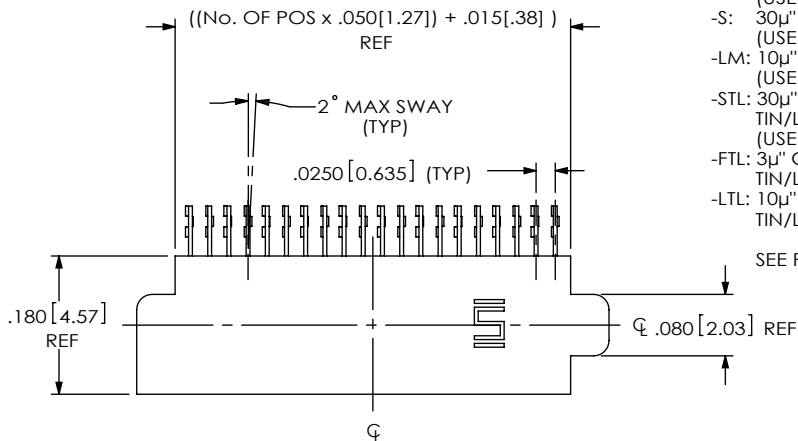
-FTL: 3μ" GOLD IN CONTACT AREA,  
TIN/LEAD (90/10+/-5%) TAIL (USE C-108-FTL & C-109-FTL)

-LTL: 10μ" GOLD IN CONTACT AREA,  
TIN/LEAD (90/10+/-5%) TAIL (USE C-108-LTL & C-109-LTL)

SEE PP-C-108-XXX & PP-C-109-XXX FOR PLATING DETAILS.

FIG 1

SFMH-110-02-XXX-D-LC SHOWN



UNLESS OTHERWISE SPECIFIED, DIMENSIONS ARE IN INCHES.

TOLERANCES ARE:

DECIMALS ANGLES  
.XX: ±.01 [.3] ±5°  
.XXX: ±.005 [.13]  
.XXXX: ±.0020 [.051]

PROPRIETARY NOTE

THIS DOCUMENT CONTAINS CONFIDENTIAL AND PROPRIETARY INFORMATION AND ALL DESIGN, MANUFACTURING, REPRODUCTION, USE, PATENT RIGHTS AND SALES RIGHTS ARE EXPRESSLY RESERVED BY SAMTEC, INC. THIS DOCUMENT SHALL NOT BE DISCLOSED, IN WHOLE OR PART, TO ANY UNAUTHORIZED PERSON OR ENTITY NOR REPRODUCED, TRANSFERRED OR INCORPORATED IN ANY OTHER PROJECT IN ANY MANNER WITHOUT THE EXPRESS WRITTEN CONSENT OF SAMTEC, INC.



520 PARK EAST BLVD, NEW ALBANY, IN 47150  
PHONE: 812-944-6733 FAX: 812-948-5047  
e-Mail: info@SAMTEC.com code 55322

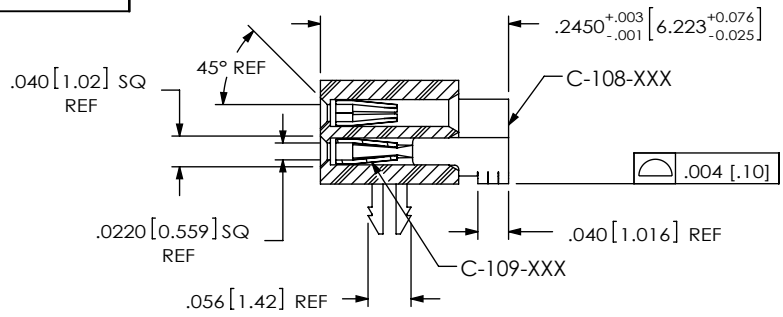
MATERIAL: DO NOT SCALE DRAWING SHEET SCALE: 2:1

INSULATOR: LCP, UL 94 VO, COLOR: BLACK  
CONTACT: PHOS BRONZE

DESCRIPTION: .050 x .050 SOCKET STRIP ASSEMBLY

DWG. NO. SFMH-1XX-XX-XXX-D-XX-XX

BY: J. BROWNING 12/07/2009 SHEET 1 OF 3



SECTION "A"-"A"

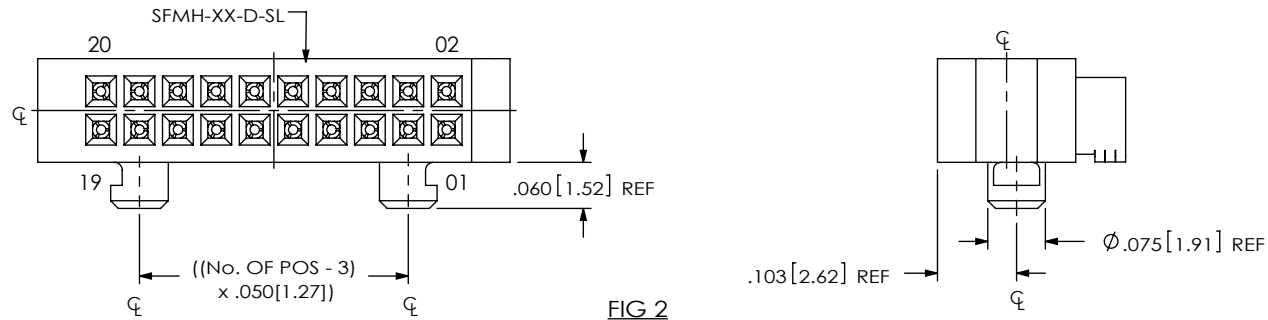


FIG 2  
SFMH-110-02-XXX-D-SL SHOWN  
(DIFFERENT AS SHOWN, OTHERWISE SAME AS FIG 1)  
(\*NOT TOOLED)

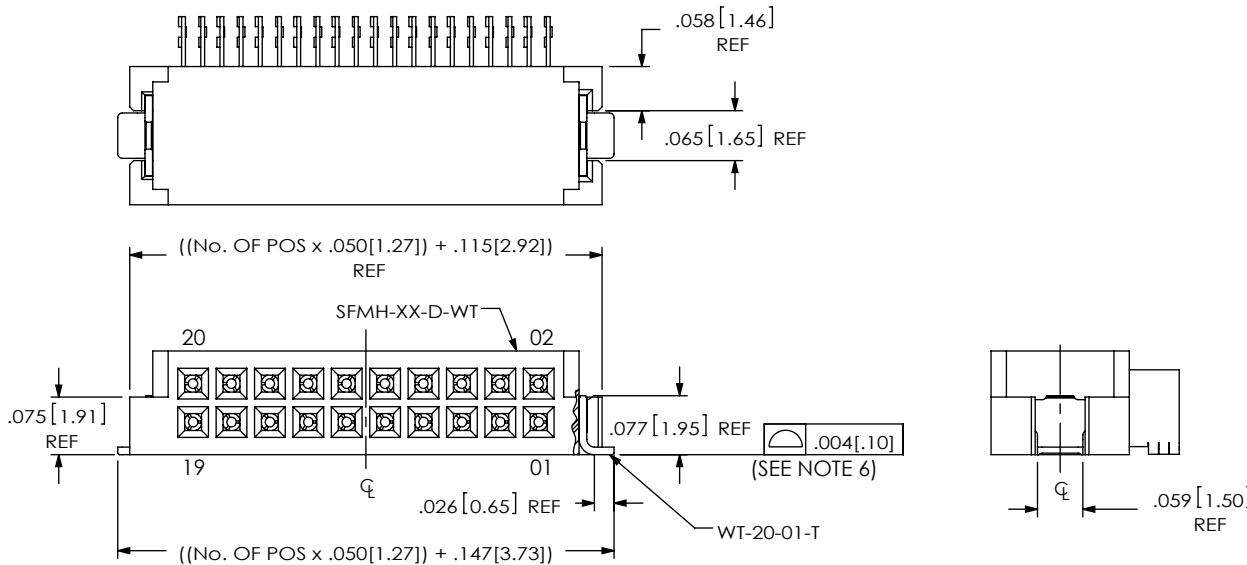


FIG 3  
SFMH-110-02-XXX-D-WT SHOWN  
(DIFFERENT AS SHOWN, OTHERWISE SAME AS FIG 1)

F:\DWG\MISC\MKTG\SFMH-1XX-XX-XXX-D-XX-XX-MKT.SLDDRW

**PROPRIETARY NOTE**  
THIS DOCUMENT CONTAINS CONFIDENTIAL AND PROPRIETARY INFORMATION AND ALL DESIGN, MANUFACTURING, REPRODUCTION, USE, PATENT RIGHTS AND SALES RIGHTS ARE EXPRESSLY RESERVED BY SAMTEC, INC. THIS DOCUMENT SHALL NOT BE DISCLOSED, IN WHOLE OR PART, TO ANY UNAUTHORIZED PERSON OR ENTITY NOR REPRODUCED, TRANSFERRED OR INCORPORATED IN ANY OTHER PROJECT IN ANY MANNER WITHOUT THE EXPRESS WRITTEN CONSENT OF SAMTEC, INC.

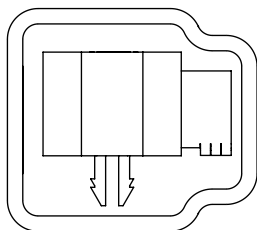
DO NOT SCALE DRAWING

SHEET SCALE: 2:1

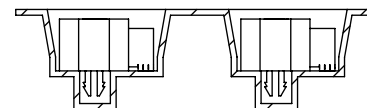
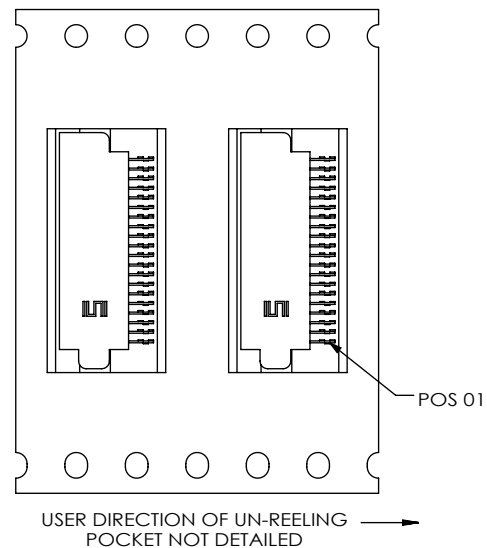


520 PARK EAST BLVD, NEW ALBANY, IN 47150  
PHONE: 812-944-6733 FAX: 812-948-5047  
e-Mail info@SAMTEC.com code 55322

DESCRIPTION:	.050 x .050 SOCKET STRIP ASSEMBLY
DWG. NO.	SFMH-1XX-XX-XXX-D-XX-XX
BY: J. BROWNING 12/07/2009	SHEET 2 OF 3



**TUBE VIEW**  
 USE TUBE PT-1-24-01-38  
 USE PLUG TP-24 (2)



**TAPE & REEL VIEW**

F:\DWG\MISC\MKTG\SFMH-1XX-XX-XXX-D-XX-XX-MKT.SLDDRW

**PROPRIETARY NOTE**  
 \* THIS DOCUMENT CONTAINS CONFIDENTIAL AND PROPRIETARY INFORMATION AND ALL DESIGN, MANUFACTURING, REPRODUCTION, USE, PATENT RIGHTS AND SALES RIGHTS ARE EXPRESSLY RESERVED BY SAMTEC, INC. THIS DOCUMENT SHALL NOT BE DISCLOSED, IN WHOLE OR PART, TO ANY UNAUTHORIZED PERSON OR ENTITY NOR REPRODUCED, TRANSFERRED OR INCORPORATED IN ANY OTHER PROJECT IN ANY MANNER WITHOUT THE EXPRESS WRITTEN CONSENT OF SAMTEC, INC.

DO NOT SCALE DRAWING

SHEET SCALE: 2:1



520 PARK EAST BLVD, NEW ALBANY, IN 47150  
 PHONE: 812-944-6733 FAX: 812-948-5047  
 e-Mail info@SAMTEC.com code 55322

DESCRIPTION: .050 x .050 SOCKET STRIP ASSEMBLY

DWG. NO. SFMH-1XX-XX-XXX-D-XX-XX

BY: J. BROWNIN 07/2009 SHEET 3 OF 3