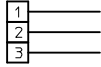
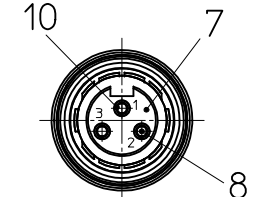
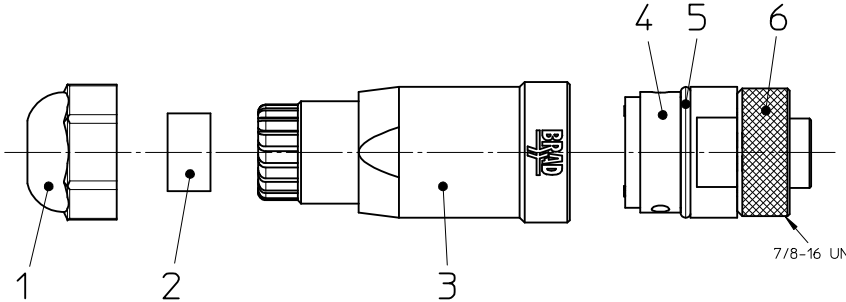
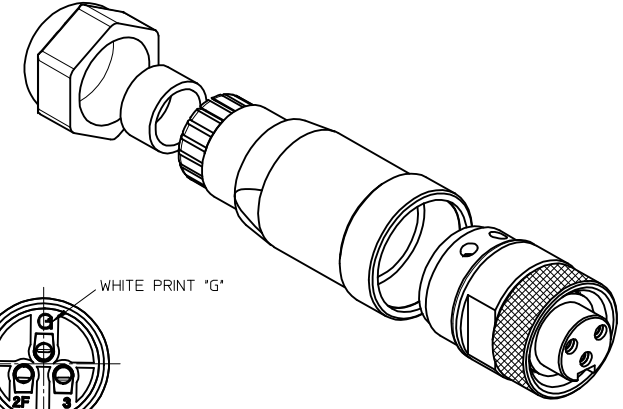
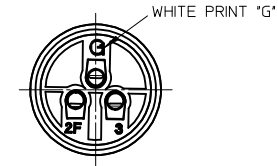
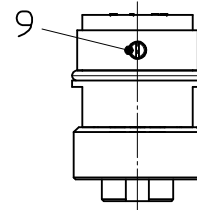
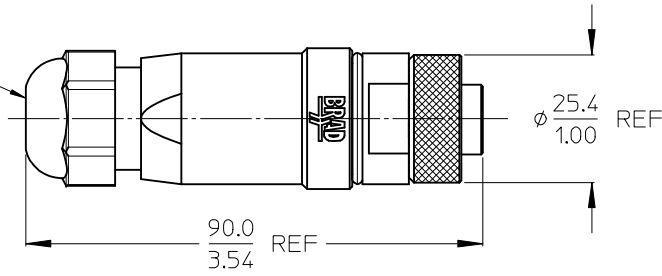


10 9 8 7 6 5 4 3 2 1

WIRING CHART



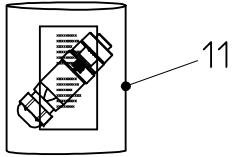
O.D. CABLE RANGE
5.0-12.0/0.20-0.48



FEMALE FACE VIEW

NOTES:

- ELECTRICAL SPECIFICATIONS:
VOLTAGE RATING: 600VAC
AMPERAGE RATING: 15 AMPS
PROTECTION: IP67
OPERATING TEMPERATURE: -20°C to 80°C
- UL CERTIFICATIONS: UL LISTED AND CULUS LISTED.
FILE NUMBER E258922
- POLYBAG: PRINTING SEE NO.: 1300170055 1A3000-34PWR



ENG. NO.: 1A3000-34PWR

ITEM	QTY	COMPONENT	MATERIAL	FINISH
1	1	HUT NUT PG13.5	PA	BK
2	1	GASKET M0	NITRILE	BK
3	1	HOUSING FA	PA	BK
4	1	INSERT FE REAR	PA	BK
5	1	GASKET OR	NBR	BK
6	1	COUPLING NUT	BRASS	NI PLATED
7	1	INSERT FE FRONT	SANTOPRENE	BK
8	3	CONTACT FE	COPPER ALLOY	AU PLATED
9	3	SCREW M3x5	BRASS	ZN
10	3	SLEEVE	STAINLESS STEEL 305	-
11	1	POLYBAG 200x200x0.050	PE	-

ENTER DESCRIPTION	QUALITY SYMBOLS
EC NO: IPG2013-2008	▽=0
DRWNR:RSCHIEBER 2013/07/16	∇=0
CHKD:APOHL 2013/07/16	
APPR:CBURGER 2013/07/16	
REV	

GENERAL TOLERANCES (UNLESS SPECIFIED)	DIMENSION STYLE
	MM/IN
4 PLACES ± --- ± ---	DRAWN BY DATE
3 PLACES ± --- ± .005	RSCHIEBER 2013/05/21
2 PLACES ± 0.13 ± .010	CHECKED BY DATE
1 PLACE ± 0.25 ± .020	APOHL 2013/05/23
0 PLACE ± --- ± ---	APPROVED BY DATE
	CBURGER 2013/05/27
ANGULAR ± 1/2°	MATERIAL NO.
DRAFT WHERE APPLICABLE MUST REMAIN WITHIN DIMENSIONS	1300170055

SCALE	DESIGN UNITS	THIRD ANGLE PROJECTION
1:1	METRIC	
TITLE		
FA MC 3P AC FE STR PG13.5 UNSH BK PA AU		
DOCUMENT NO.		
SD-130017-015		
SHEET NO.		
1 OF 1		

molex	
THIS DRAWING CONTAINS INFORMATION THAT IS PROPRIETARY TO MOLEX INCORPORATED AND SHOULD NOT BE USED WITHOUT WRITTEN PERMISSION	

9 8 7 6 5 4 3 2 1