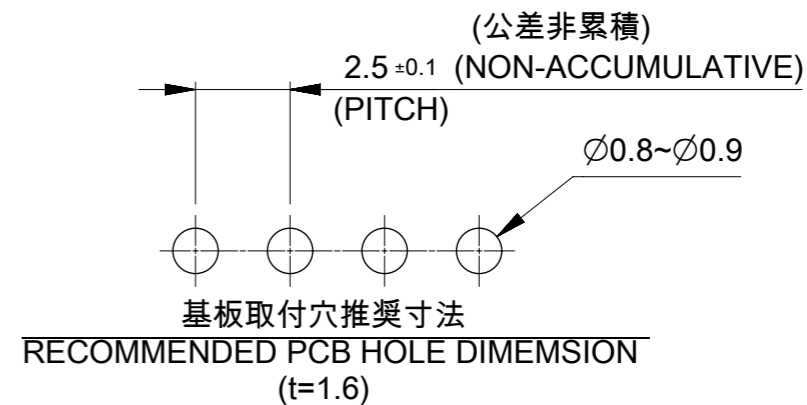
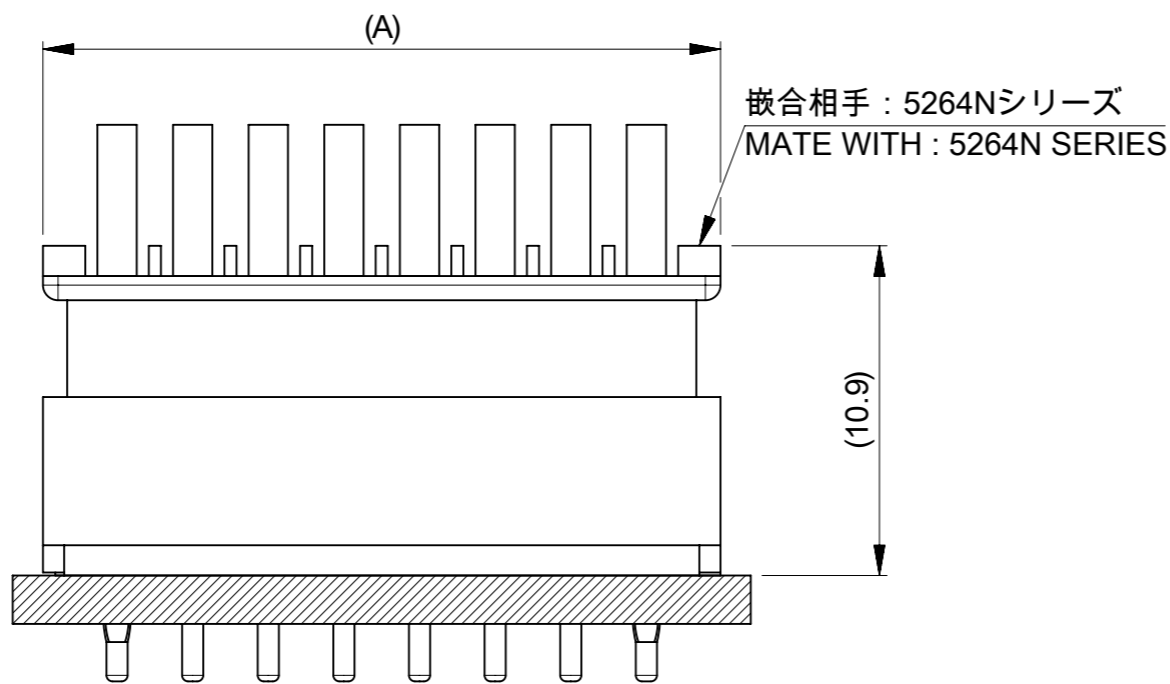
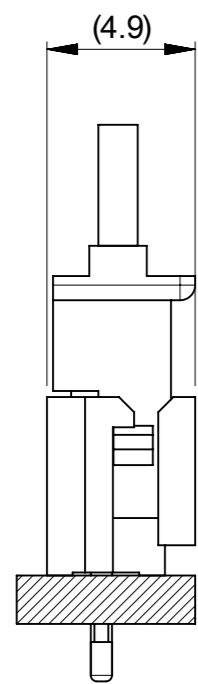




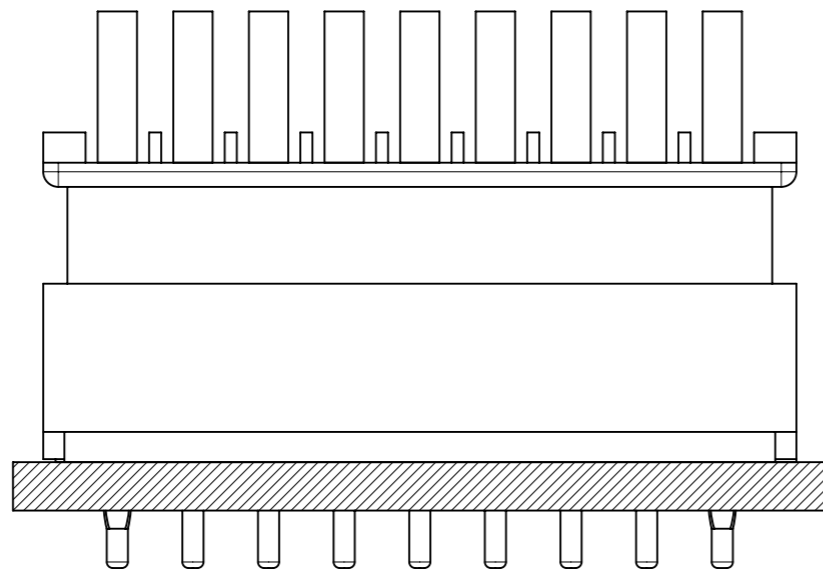
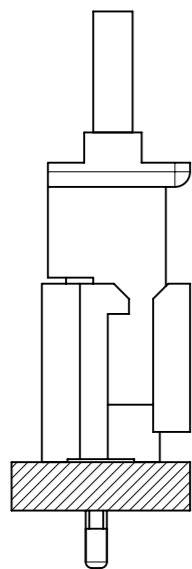
△ 適用製品及び各種仕様書  
 APPLICABLE PRODUCTS AND VARIOUS SPECIFICATIONS

梱包仕様書 PACKAGING SPECIFICATION	ORDER NO. 999909**	SPECIFICATION NO. SPK-5267-001 PS 001
嵌合相手 MATE WITH	RECEPTACLE HOUSING	
シリーズ番号 SERIES NO.	5264N	
製品仕様書 PRODUCT SPECIFICATION	PS-5264-001 PS 001	

2-8極  
2-8 CIRCUIT



9-15極  
9-15 CIRCUIT



嵌合図  
MATING CONNECTORS

THIS DRAWING CONTAINS INFORMATION THAT IS PROPRIETARY TO MOLEX ELECTRONIC TECHNOLOGIES, LLC AND SHOULD NOT BE USED WITHOUT WRITTEN PERMISSION									
DIMENSION UNITS	SCALE	CURRENT REV DESC:							
mm	NTS								
GENERAL TOLERANCES (UNLESS SPECIFIED)					EC NO: 727270 DRWN: SOKUMURA01 2022/11/30 CHK'D: SAKIYAMA 2023/03/09 APPR: AIDA 2023/03/09				
ANGULAR TOL ± 3.0°					PRODUCT CUSTOMER DRAWING DOCUMENT NUMBER: 52670002-SD DOC TYPE: PSD DOC PART: 000 REVISION: B				
4 PLACES	±	INITIAL REVISION:			MATERIAL NUMBER: SEE SHEET 1				
3 PLACES	±	DRWN: SUDAYGUNAGI 2019/06/20			CUSTOMER: GENERAL				
2 PLACES	± 0.2	APPR: KOMURAKAMI 2020/05/13			SHEET NUMBER: 2 OF 2				
1 PLACE	± 0.2	DRAFT WHERE APPLICABLE MUST REMAIN WITHIN DIMENSIONS			THIRD ANGLE PROJECTION				
0 PLACES	±	DRAWING: A3-SIZE			SERIES: 5267				