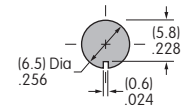
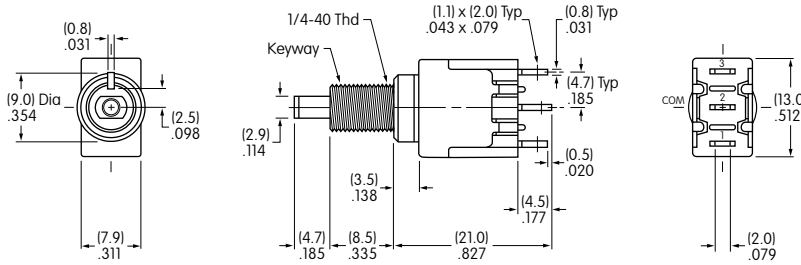


MB2065VA001

Bushing Mount • Single Pole • Solder Lug

Dimensions in mm/inch

PANEL CUTOUT



Panel Thickness:
.134" (3.4mm) Maximum

BASE SWITCH

SPLASHPROOF BOOT

AT4042H
Splashproof Boot

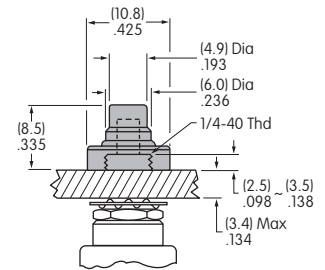


Part Number
MB2065SS1W01/CUL

Color: Black
Material: Silicone rubber
Operating life:
30,000 operations
Sealing: IP65 rated

Installation Instructions

1. Insert switch bushing from back of panel into the cutout hole and adjust height of bushing above the panel to a minimum of .098" (2.5mm) and a maximum of .138" (3.5mm).
2. Screw the boot onto the bushing. Tighten the hexagon nut on the back of panel to complete.

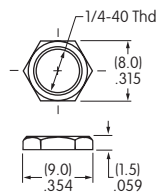


STANDARD HARDWARE

AT513H Hexagon Nut

1 included with each switch

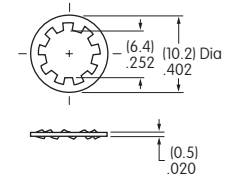
Material:
Brass with Nickel plating



AT509 Lockwasher

1 included with each switch

Material:
Steel with Zinc/Chromate



POLES & CIRCUITS

Pole	Model	Plunger Position		Connected Terminals		Throw & Switch Schematics
		Normal	Down	Normal	Down	
SP	MB2065	ON	ON	2-3	2-1	SPDT Note: Terminal numbers are not actually on the switch. Schematic: 2 (COM), 3, 1

On alternate action models, after transferring circuit, the plunger returns to its original position and does not latch down.

CONTACT MATERIALS & RATINGS

Silver over Silver

Power Level

6A @ 125V AC & 3A @ 250V AC

Base Switch Specifications

Electrical Capacity (Resistive Load)

Power Level (silver): 6A @ 125V AC & 3A @ 250V AC


Other Ratings

Contact Resistance: 10 milliohms maximum
Insulation Resistance: 1,000 megohms minimum @ 500V DC
Dielectric Strength: 1,000V AC minimum between contacts for 1 minute minimum;
 1,500V AC minimum between contacts & case for 1 minute minimum
Mechanical Life: 100,000 operations minimum
Electrical Life: 25,000 operations minimum
Nominal Operating Force: 4.41N
Contact Timing: Slow make, slow break
Plunger Travel: Pretravel .110" (2.80mm)
 Overtravel .043" (1.09mm)
 Total Travel .153" (3.90mm)

Materials & Finishes

Plunger: Brass with nickel plating
Bushing: Brass with nickel plating
Frame: Stainless steel
Case: Diallyl phthalate resin (UL94V-0)
Movable Contactor: Phosphor bronze with silver plating
Movable Contacts: Silver alloy
Stationary Contacts: Silver with silver plating
Terminals: Copper or brass with silver plating

Environmental Data

Operating Temperature Range: -30°C through +85°C (-22°F through +185°F)
Humidity: 90 ~ 95% humidity for 96 hours @ 40°C (104°F)
Vibration: 10 ~ 55Hz with peak-to-peak amplitude of 1.5mm traversing the frequency range and returning in 1 minute; 3 right angled directions for 2 hours
Shock: 50G (490m/s²) acceleration (tested in 6 right angled directions, with 5 shocks in each direction)
RoHS Compliant: 

Installation

Mounting Torque: 0.7Nm (6.0 lb·in)
Soldering Time & Temperature: Manual Soldering: 390°C for 4 seconds maximum, 2 cycles
Process Seal: These devices are not process sealed. Hand clean locally using alcohol based solution.

Standards & Certifications

Flammability Standards: UL94V-0 case
UL: **File No. E44145**
 "/CUL" at end of part number for UL recognized switch.
 Models recognized at 6A @ 125V AC or 3A @ 250V AC.