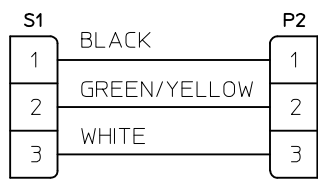
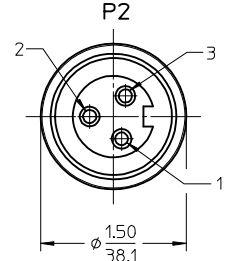


- NOTES:
- 1) MATERIAL: SEE TABLE
 - 2) FINISHES: SEE TABLE
 - 3) WRAP LABEL IS MARKED WITH P/N, DATE CODE VOLTAGE & AMPERAGE
 - 4) MATES WITH: QUICK CHANGE 3 POLE RECEPTACLE
 - 5) ELECTRICAL DATA:
 10AWG UL TYPE: TC-ER STRANDED CABLE
 MAX VOLTAGE: 600V
 MAX CURRENT: 32A
 PROTECTION IP67 (WHEN MATED)
 TEMPERATURE RANGE: -20°C TO 90°C
 - 6) PACKAGING:
 CABLE ASSEMBLIES ARE BAGGED SEPERATLY IN POLY BAGS
 WITH BAR CODE LABEL ATTACHED TO OUTSIDE OF BAG.
 - 7) ASSEMBLY IS RoHS COMPLIANT



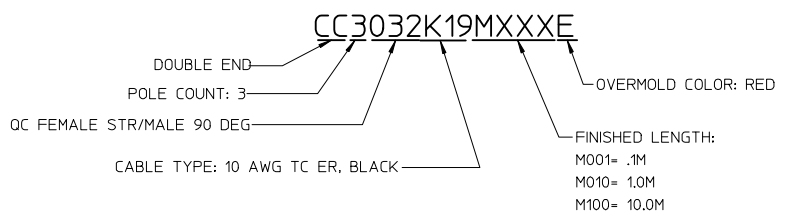
WIRING DIAGRAM



MALE FACE VIEW

11	2	WARNING LABEL	VINYL	ORANGE/BLACK
10	1	WRAP LABEL	VINYL	BLACK/YELLOW
9	1	OVERMOLD (MALE 90 DEG)	PVC	RED
8	1	COUPLING (MALE)	ALUMINUM	CLEAR ANNODIZE
7	3	CONTACT PIN	Cu ALLOY	GOLD PLATED
6	1	INSERT (MALE)	PVC	BLACK
5	1	OVERMOLD (FEMALE STRAIGHT)	PVC	RED
4	1	COUPLING	ALUMINUM	CLEAR ANNODIZE
3	3	CONTACT SOCKET	Cu ALLOY	GOLD PLATED
2	1	INSERT	PVC	BLACK
1	1	CABLE, 10/3 TC-ER (SEE NOTE 5)	TPE JACKET	BLACK
ITEM	QTY.	DESCRIPTION	MATERIAL	DESCRIPTION

PART NUMBER LEGEND



RELEASED EC NO: IPG2016-0830 2015/12/18 DRAWN BY: RSTONE CHKD: BWOODMAN APPR: BWOODMAN 2016/02/29	QUALITY SYMBOLS	GENERAL TOLERANCES (UNLESS SPECIFIED)	DIMENSION STYLE IN/MM	SCALE 1:1	DESIGN UNITS INCH	THIRD ANGLE PROJECTION	
	▽=0	4 PLACES ± --- ± ---	DRAWN BY: RSTONE DATE: 2015/12/18	TITLE: QUICK CHANGE CORD ASSY FEM STR TO MALE 90D, RED 10AWG TPE CABLE molex DOCUMENT NO. SD-130064-010 SHEET NO. 1 OF 1			
	▽=0	3 PLACES ± --- ± ---	CHECKED BY: DATE:				
	▽=0	2 PLACES ± --- ± .01	APPROVED BY: BWOODMAN DATE: 2016/02/29				
	1 PLACE ± 0.3 ± ---	MATERIAL NO. -					
	0 PLACE ± --- ± ---	ANGULAR ± .5 °	DRAFT WHERE APPLICABLE MUST REMAIN WITHIN DIMENSIONS				
			SIZE C	THIS DRAWING CONTAINS INFORMATION THAT IS PROPRIETARY TO MOLEX INCORPORATED AND SHOULD NOT BE USED WITHOUT WRITTEN PERMISSION			