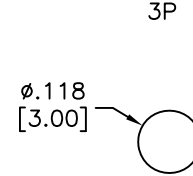
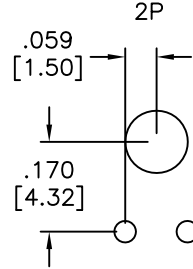
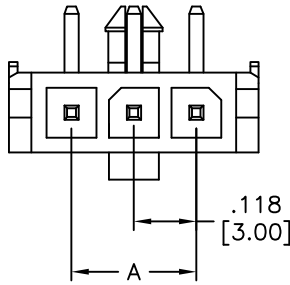


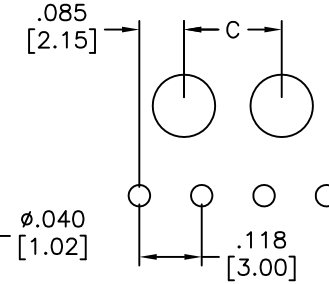
APPROVED: _____
 DATE: _____ TITLE: _____

Rev	AWO #	Description	Date	Appr
-	11140	RELEASED	3/08/11	
A		UPDATE DIM. & SPEC.	6/3/17	AY/MY

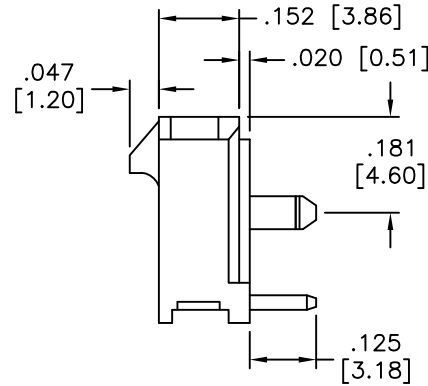
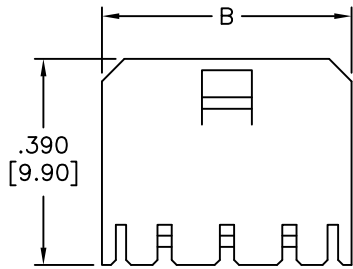


3P

4~12P
 $C = .118 [3.00] \times (N - 3) + .067 [1.70]$



RECOMMENDED PCB LAYOUT



POSITIONS	Dimension	
	A	B
2	.118 [3.00]	.380 [9.65]
3	.236 [6.00]	.498 [12.65]
4	.354 [9.00]	.616 [15.65]
5	.472 [12.00]	.734 [18.65]
6	.591 [15.00]	.852 [21.65]
7	.709 [18.00]	.970 [24.65]
8	.827 [21.00]	1.089 [27.65]
9	.945 [24.00]	1.207 [30.65]
10	1.063 [27.00]	1.325 [33.65]
11	1.181 [30.00]	1.443 [36.65]
12	1.299 [33.00]	1.561 [39.65]

SPECIFICATIONS:

Material:
 Insulator: LCP, rated UL 94V-0
 Insulator color: Black
 Contact: Brass, Tin plated
 Electrical:
 Voltage rating: 250 VAC
 Current rating: 5 A
 Contact resistance: 10 mohms max.
 Withstanding voltage: 1500 VAC for 1 minute
 Temperature rise: 30°C max.
 Environmental:
 Lead free, RoHS compliant.



UNLESS OTHERWISE SPECIFIED ALL DIMENSIONS ARE INCHES [MM] TOLERANCES: EXCEPT AS NOTED	
.X ± .10	Ø.X ± .10
.XX ± .020	Ø.XX ± .015
.XXX ± .015	Ø.XXX ± .010
APPROVALS	
DRAWN	DATE
DY	3/08/11
CHECKED	
APPROVED	

ADAM TECH
 909 Rahway Avenue, Union, NJ 07083
 Phone: 908-687-5000 Fax: 908-687-5710

TITLE: .118 [3.00] SINGLE ROW HEADER
 HORIZONTAL, PCB TYPE

SIZE	PART NO.	REV.
X	DML-1-XX-A-H-T-A	A

REF: S00015T SCALE: NTS SHEET 1 OF 1