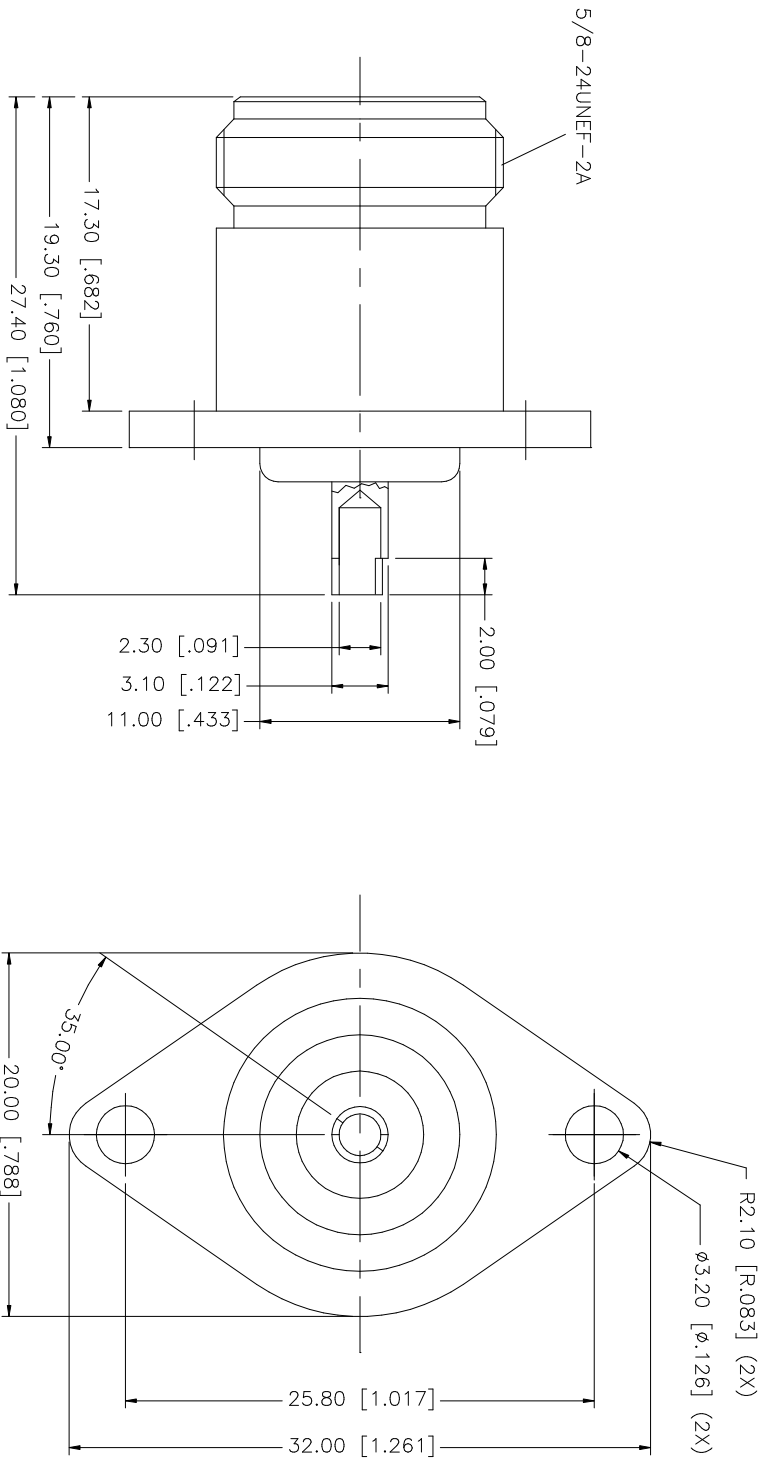


| REV. | DATE     | DESCRIPTION     |
|------|----------|-----------------|
| NC   | 06/25/05 | INITIAL RELEASE |



| NO. | DESCRIPTION    | MATERIAL     | FINISH  | QTY | UNLESS OTHERWISE SPECIFIED DIMENSIONS ARE IN INCHES AND FOR CUSTOMER REFERENCE ONLY. TOLERANCES FOR MILLIMETERS ARE: | UNLESS OTHERWISE SPECIFIED DIMENSIONS ARE IN INCHES AND FOR CUSTOMER REFERENCE ONLY. TOLERANCES FOR MILLIMETERS ARE: | APPROVALS            | DATE     | PART DESCRIPTION      | DWG. NO.   | REV. | SIZE | SCALE |
|-----|----------------|--------------|---------|-----|--|--|----------------------|----------|-----------------------|------------|------|------|-------|
| 1   | CONTACT PIN    | PHOS. BRONZE | GOLD    | 1   | 0.5 - 8mm ± 0.20mm   | 0.20 - .315 = ± 0.007"   | G.R.S.               | 06/25/05 | N PANEL RECEIPT. JACK | 172323.DWG | NC   | A    | NA    |
| 2   | INSULATOR      | TEFLON       | NATURAL | 1   | 8 - 30mm ± 0.40mm  | .315 - 1.180 = ± 0.015"  |                      |          |                       |            |      |      |       |
| 3   | INSULATOR BODY | BRASS        | NECOTE  | 1   | 30 - 120mm ± 0.50mm  | 1.180 - 4.724 = ± 0.020"   |                      |          |                       |            |      |      |       |
| 4   | DESCRIPTION    | MATERIAL     | FINISH  | QTY | UNLESS OTHERWISE SPECIFIED DIMENSIONS ARE IN INCHES AND FOR CUSTOMER REFERENCE ONLY. TOLERANCES FOR MILLIMETERS ARE: |  | DO NOT SCALE DRAWING |          |                       |            |      |      |       |
| 5   |                |              |         |     | UNLESS OTHERWISE SPECIFIED DIMENSIONS ARE IN INCHES AND FOR CUSTOMER REFERENCE ONLY. TOLERANCES FOR MILLIMETERS ARE: |  | CAD FILE             |          |                       |            |      |      |       |
| 6   |                |              |         |     | UNLESS OTHERWISE SPECIFIED DIMENSIONS ARE IN INCHES AND FOR CUSTOMER REFERENCE ONLY. TOLERANCES FOR MILLIMETERS ARE: |  | C:/172/172323.DWG    |          |                       |            |      |      |       |
| 7   |                |              |         |     | UNLESS OTHERWISE SPECIFIED DIMENSIONS ARE IN INCHES AND FOR CUSTOMER REFERENCE ONLY. TOLERANCES FOR MILLIMETERS ARE: |  |                      |          |                       |            |      |      |       |
| 8   |                |              |         |     | UNLESS OTHERWISE SPECIFIED DIMENSIONS ARE IN INCHES AND FOR CUSTOMER REFERENCE ONLY. TOLERANCES FOR MILLIMETERS ARE: |  |                      |          |                       |            |      |      |       |

**Amphenol Connex**