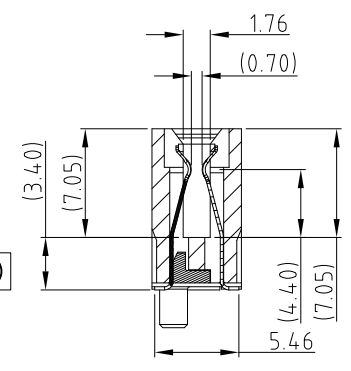
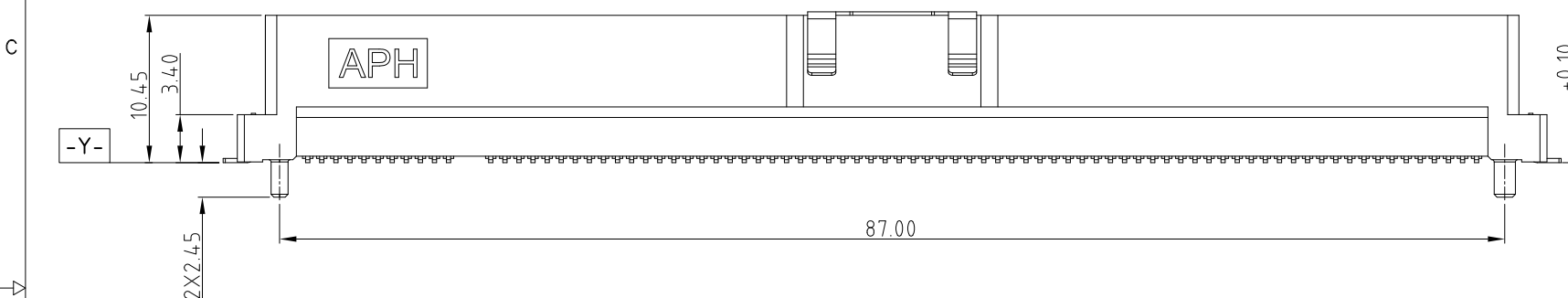
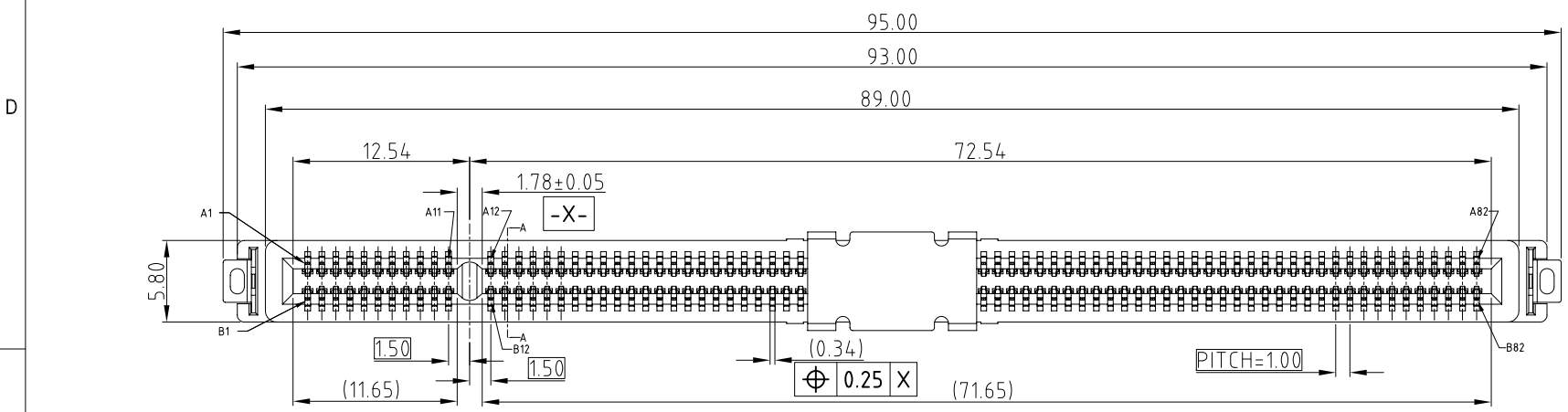


This document is the property of Amphenol Corporation and is delivered on the express condition that it is not to be disclosed, reproduced or used, in whole or in part, for manufacture or sale by anyone other than Amphenol Corporation without its prior consent, & that no right is granted to disclose or to use any information in this document.

CUSTOMER DRAWING

REVISIONS				
SYM	ECN	DESCRIPTION	DATE	APPROVED
1	CD1445	First Proposal	Sep.06,2018	YH
2	CD1571	Change packing tray	Dec.21,2018	YH
3	CDXXXX	Update	Feb.28,2019	YH



PART NUMBER SYSTEM

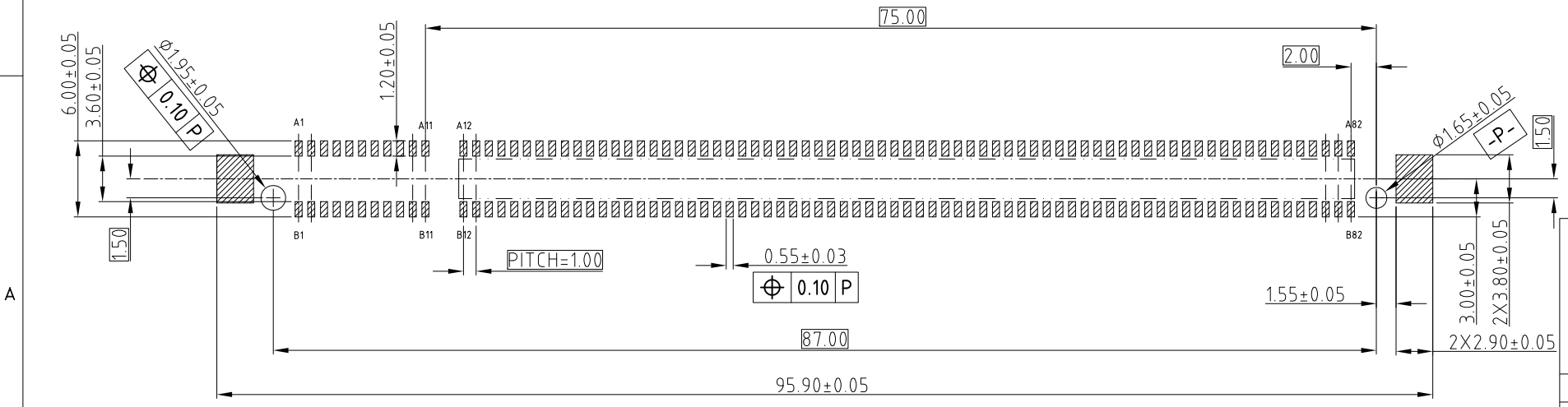
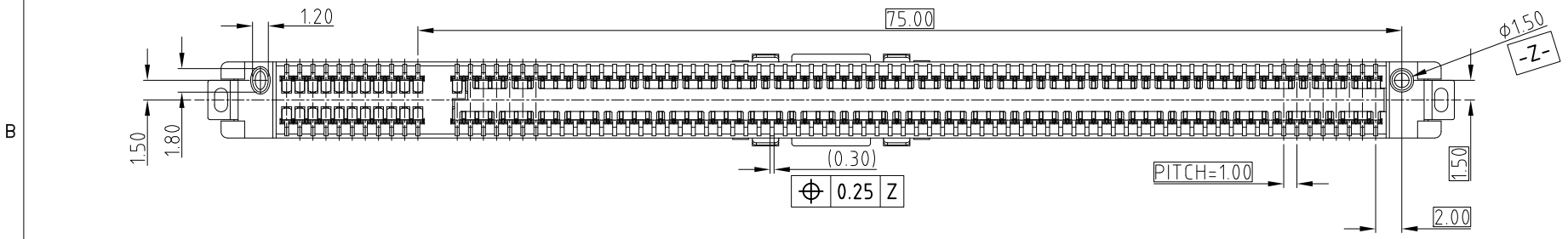
CEE0164001403X X

- PLATING SPEC
 - 1 0.76um Au
 - 2 0.38um Au
 - 3 GOLD FLASH
- Speed
 - 0 32Gbps
 - 1 16Gbps
- Solder tails:
 - 1 STD tail and soft tray
 - 2 STD tail
 - 3 Short tail
- PIN COUNT: 164



NOTE:

- MATERIAL:
 - HOUSING: HIGH TEMPERATURE THERMOPLASTIC BLACK UL94-V0
 - CONTACT: COPPER ALLOY
 - BOARDLOCK: SPCC
- PLATING:
 - CONTACT: MATING AREA: SEE PLATING SEPC OVER 1.27-2.54 UM NICKEL UNDERPLATED
 - SOLDER AREA: 1.27 MIN TIN OVER 1.27-2.54 UM NICKEL UNDERPLATED
 - BOARDLOCK: 1.27 MIN TIN OVER 1.27-2.54UM NICKEL UNDERPLATED
- ELECTRICAL PERFORMANCE:
 - RATED CURRENT FOR SIGNAL PIN: 0.7A/PIN;
 - RATED CURRENT FOR Power Pin: 1.1A/pin(total:8pin Include: A2/A3/A9/A10/B1/B2/B3/B8).
- MATERIAL SHOULD BE FULFILLED AMPHENOL SPEC # SSN002
- ORDERING PN: REFER TO THE PN SYSTEM
- 25~32Gbps: THE ECB CONNECTS ALL GND PIN.
- 16Gbps max: DO NOT HAVE TO CONNECTS ALL GND PIN
- MOISTURE SENSITIVITY LEVEL:1.

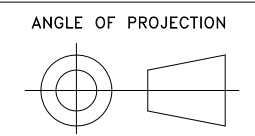


RECOMMENDED PCB LAYOUT
GENERAL TOLERANCE ±0.05

UNLESS OTHERWISE SPECIFIED TOLERANCES	
U.S.	METRIC
.X +/-	0.25
.XX +/-	0.20
.XXX +/-	0.15
FRACTIONS +/-	
ANGLES +/-	5°

APPROVAL		DATE
DRAWN	Xg.liu	Feb.28,2019
CHECKED		
APPROVED		

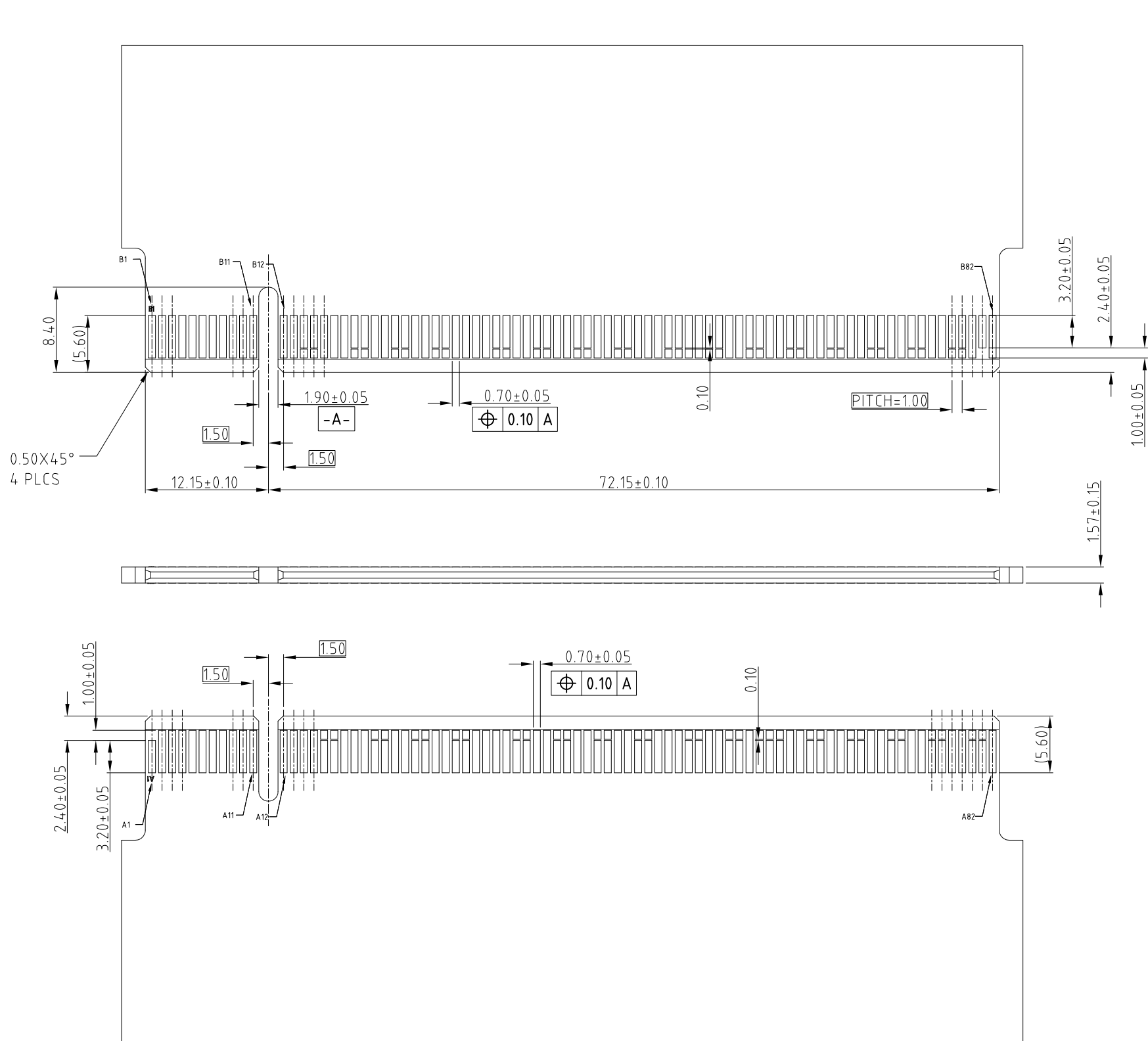
Amphenol		
TITLE Cool Edge 32&16G Short tail 1.0mm pitch connector		
SIZE	DRAWING NO.	REV.
A3	C CEE0164001403XX	3
SCALE	NONE	SHEET 1 OF 3



This document is the property of Amphenol Corporation and is delivered on the express condition that it is not to be disclosed, reproduced or used, in whole or in part, for manufacture or sale by anyone other than Amphenol Corporation without its prior consent, & that no right is granted to disclose or to use any information in this document.

CUSTOMER DRAWING

REVISIONS				
SYM	ECN	DESCRIPTION	DATE	APPROVED



GND PIN Definition	
SIDE A GND PIN	A12,A15,A18,A20,A23,A24,A27,A28,A31,A34,A37,A38,A41,A42,A45,A46,A49,A51,A54,A55,A58,A59,A62,A63,A66,A67,A70,A71,A74,A75,A78,A79,A82
SIDE B GND PIN	B13,B16,B18,B21,B22,B25,B26,B29,B32,B35,B36,B39,B40,B43,B44,B47,B49,B52,B53,B56,B57,B60,B61,B64,B65,B68,B69,B72,B73,B76,B77,B80

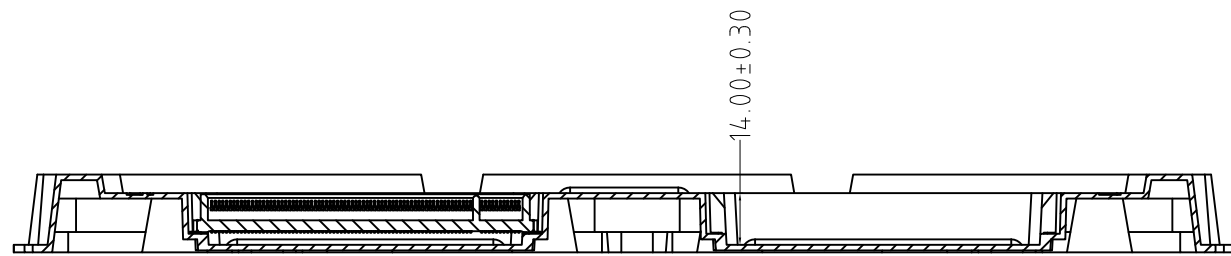
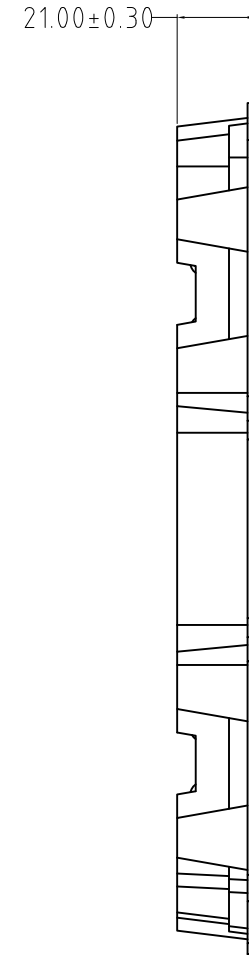
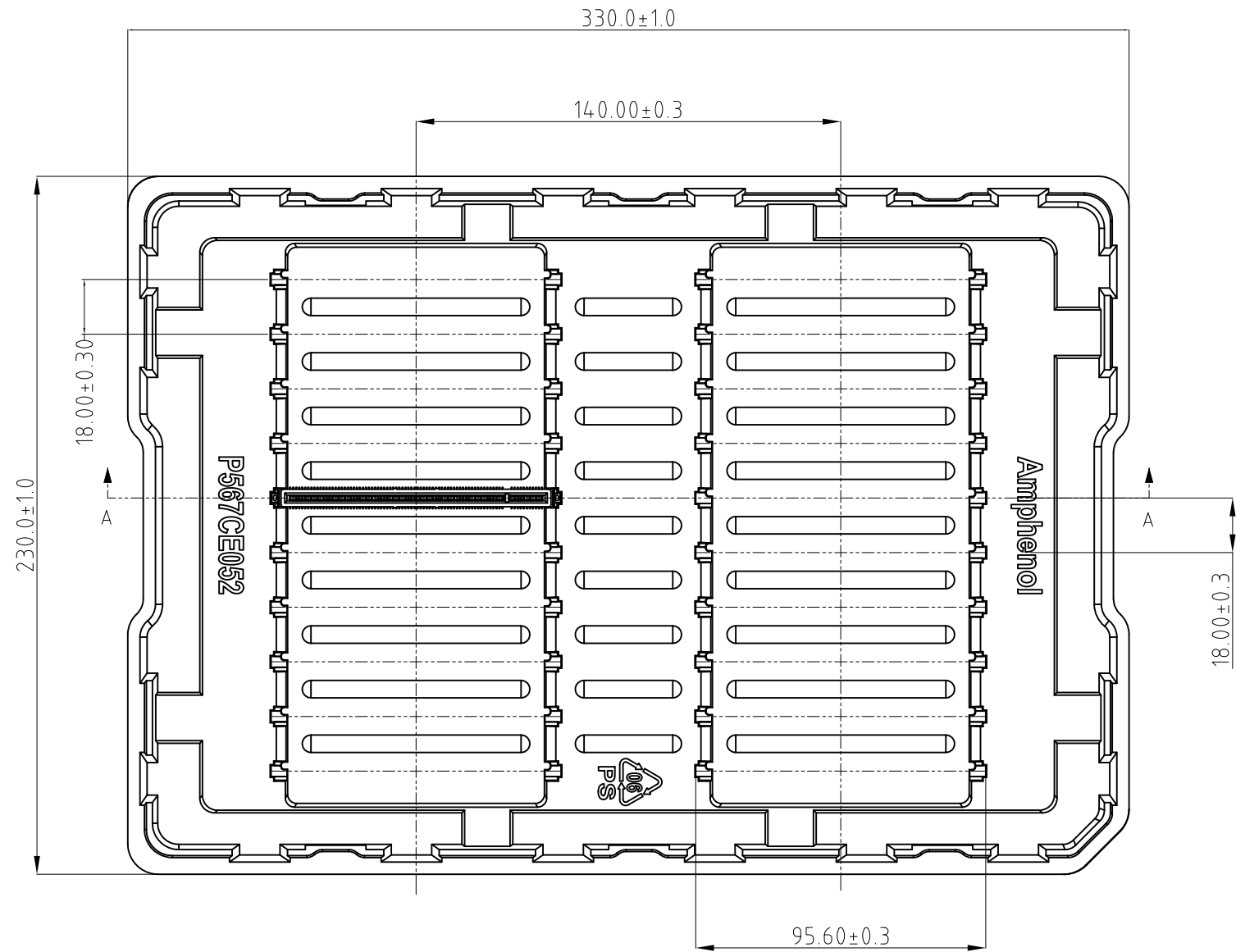
RECOMMENDED LAY OUT FOR MATING CARD, THICKNESS=1.57mm
GENERAL TOLERANCE ±0.05



UNLESS OTHERWISE SPECIFIED TOLERANCES		APPROVAL	DATE	Amphenol		
	U.S. METRIC	DRAWN	Xg.liu			Feb.28,2019
.X	+/- 0.10	CHECKED				
.XX	+/- 0.05	APPROVED				
.XXX	+/- 0.03	DRAWING FILE :			TITLE	
FRACTIONS	+/- 5°	INTERNAL\DRAWING\CE\ C CEE0164001403XX			Cool Edge 32&16G Short tail 1.0mm pitch connector	
ANGLES	+/-	ANGLE OF PROJECTION			SIZE	
FOR MATERIALS AND FINISHES SEE NOTES					DRAWING NO.	
REMOVE SHARP EDGES					A3	C CEE0164001403XX
DIMENSIONS		SCALE			NONE	
—U.S.—	INCHES	SHEET 2 OF 3				
(METRIC)	(mm)					

This document is the property of Amphenol Corporation and is delivered on the express condition that it is not to be disclosed, reproduced or used, in whole or in part, for manufacture or sale by anyone other than Amphenol Corporation without its prior consent, & that no right is granted to disclose or to use any information in this document.

REVISIONS				
SYM	ECN	DESCRIPTION	DATE	APPROVED



SECTION:A-A



NOTE:

1. MATERIAL: ANTI-STATIC PS ,BLACK,T=2.00±0.05mm
- △ THE MIN THICKNESS SHOULD MORE THAN 0.50mm.
3. DRAFT ANGLE 3~5°
4. NO HIT MARK,CRACK AND BRIDGE
5. INDICATE THE P/N ON THE TOP OF TRAY
6. DIMENSIONS WITH NUMBERING '⊕' MARKED SHOULD BE CHECKED IN PROCESS CONTROL (AT LEAST, NOT LIMITED TO)
7. SHOULD TO PACKING THE PRODUCT IN THE TRAY BY CHECKING
8. MATERIAL SHOULD BE FULFILLED AMPHEONL SPEC# S-SN-002
9. MATERIAL SHOULD BE FULFILLED AMPHEONL SPEC# S-SN-004

UNLESS OTHERWISE SPECIFIED TOLERANCES U.S. METRIC 16>L ±0.5 16<L<63 ±0.8 63<L<200 ±1.25 200<L<300 ±2 300<L ±3 ANGLES ±1° FOR MATERIALS AND FINISHES SEE NOTES	APPROVAL	DATE	Amphenol	
	DRAWN Xg.Ilu	Feb.28,2019		
REMOVE SHARP EDGES	CHECKED	APPROVED	TITLE	
DIMENSIONS	DRAWING FILE : INTERNAL\DRAWING\CEV C CEE0164001403XX		TRAY FOR CEE0XXX001403XX CONNECTOR	
—U.S.— INCHES	ANGLE OF PROJECTION		SIZE	DRAWING NO.
(METRIC) (mm)			A3 C	CEE0164001403XX
			SCALE	REV.
			NONE	3
			SHEET 3 OF 3	