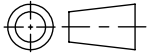
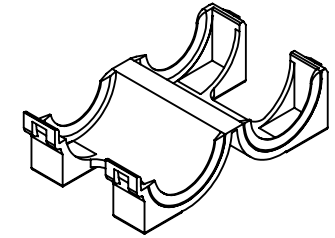
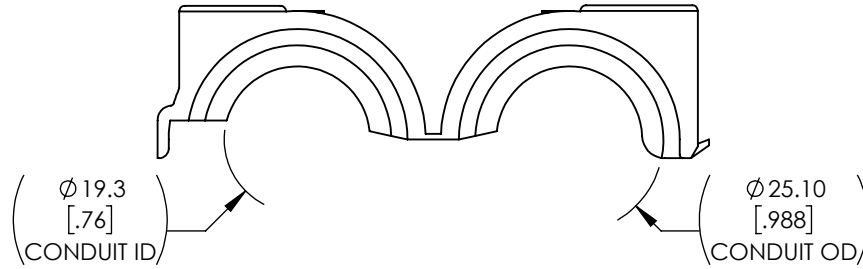


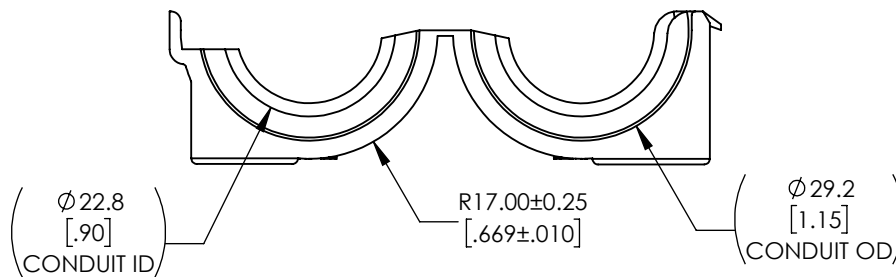
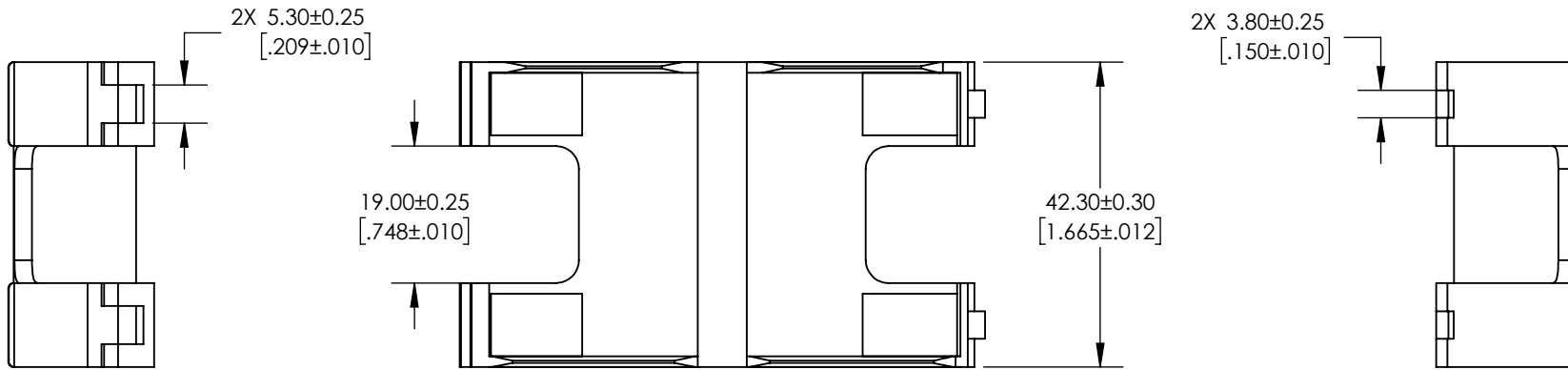
SW



Revision level			Revision Record	Changed	Date	Approved	Date
Drawing	State	Part					
01.1	Design Release	-	SEE ECN# 14605	CTF	08/24/2018	KAC	08/24/2018



ISOMETRIC VIEW  
SCALE 1 : 2



GLOBAL PART DESCRIPTION	SUPERCEDES DCS PART NUMBER	FOR CONDUIT ID
CTHC-B78-PP-BK	12020214	12.52 [0.493] & 19.05 [0.750]

Material  
PP IM BLK PER DCS  
M2097001

Units: **millimeters**  
Dimension without tolerances details to:  
.xxx = ±.013  
.xx = ±.13  
.x = ±.3  
None = ±.8  
∠ = ±0.5°  
Dimension Formatted mm/[in]

The copyright of this drawing is reserved by HellermannTyton. It is issued on condition that it is not reproduced, copied, or disclosed to a third party, either wholly or in part, without the consent of HellermannTyton.

Drawn	CTF	08/24/2018
Approved	KAC	08/24/2018

**HellermannTyton**  
North America  
Email: corp@htamericas.com  
Web: www.hellermann.tyton.com

Article/Type-No CTHC-B78

Title **LOOM TUBING BREAKOUT**

Drawing-No PRODUCTION : Phase

**18-2014-001-CSU**

Scale 1:1

Project Number  
PRP 18-2014

Format AH

Sheet 1/1