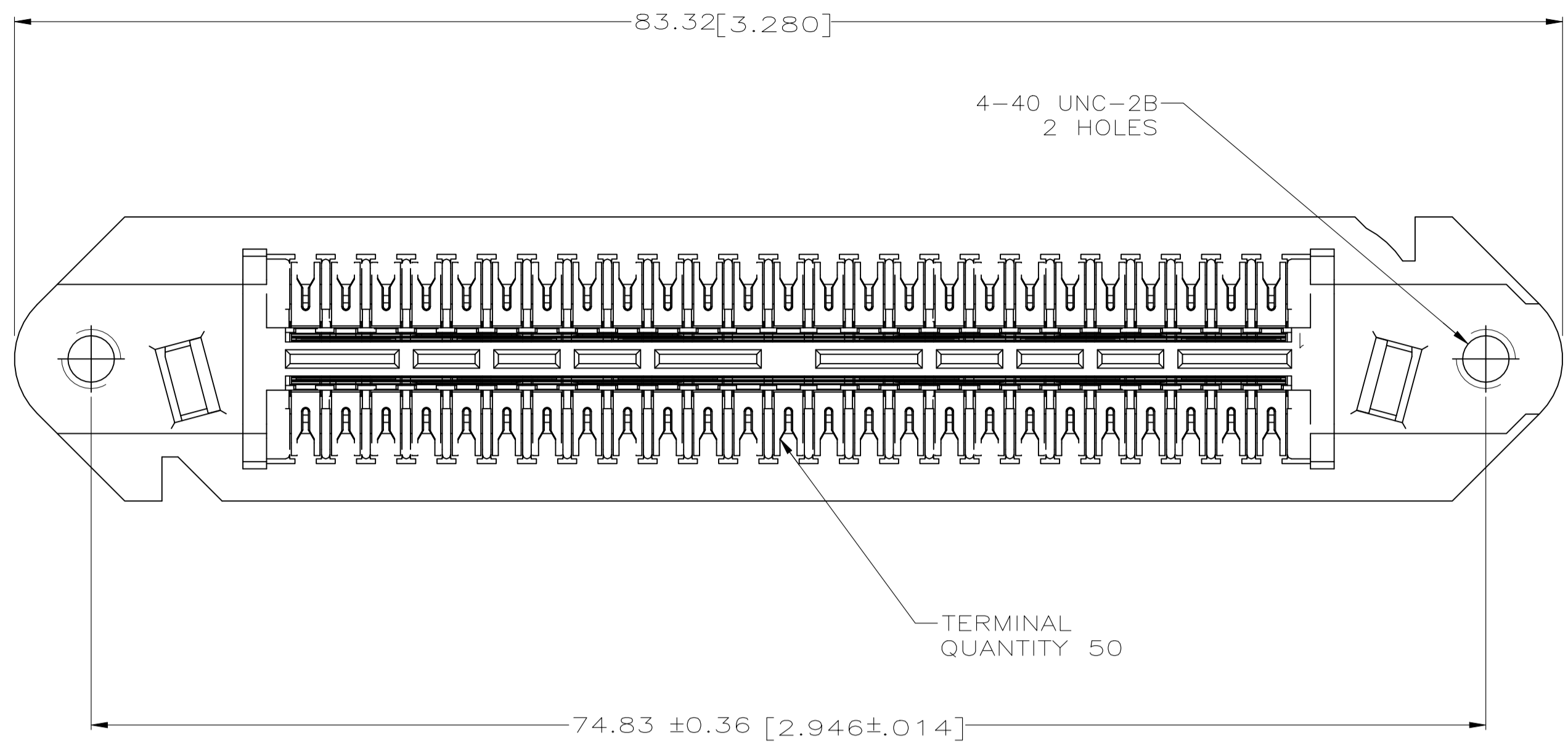
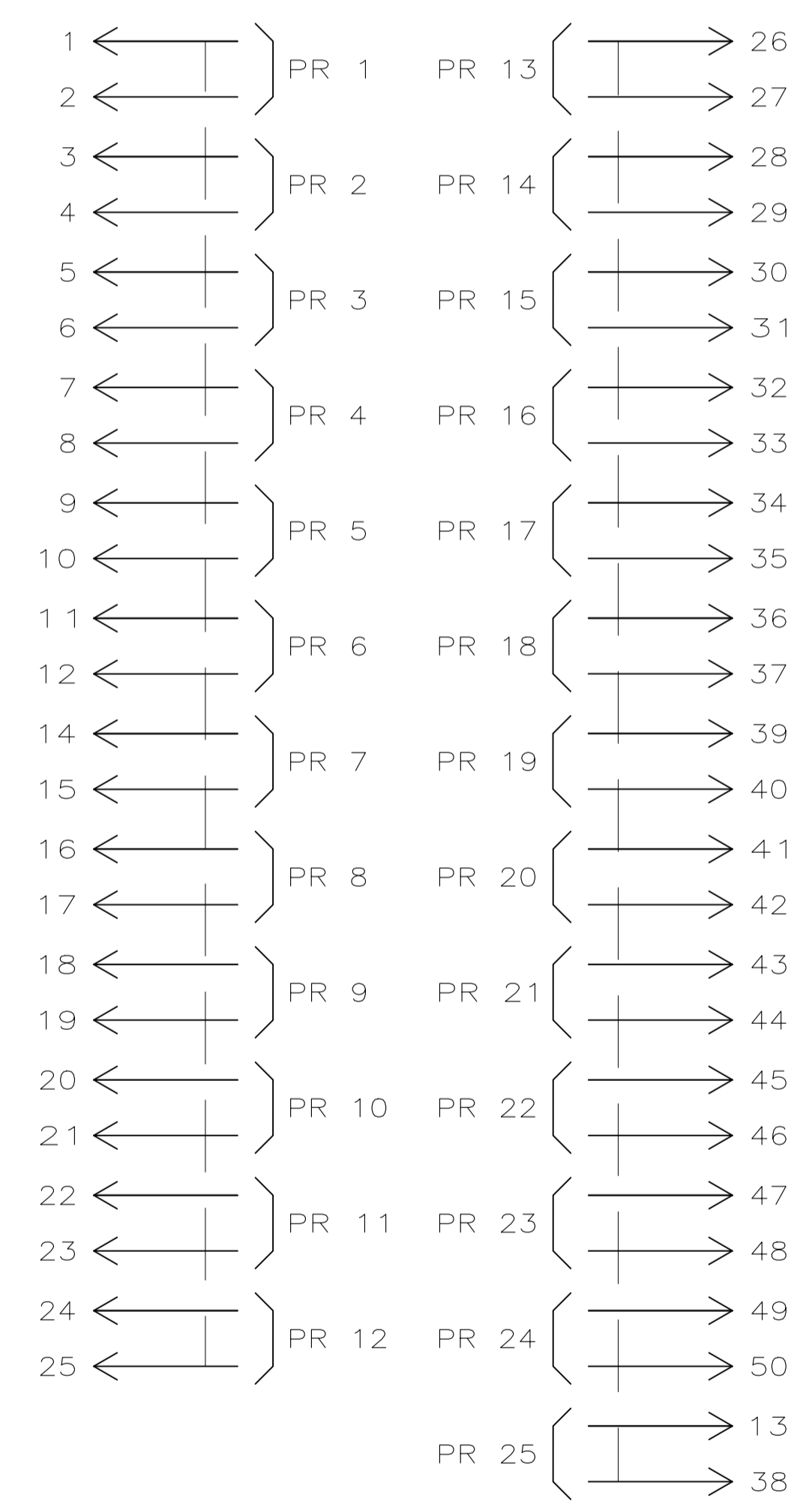
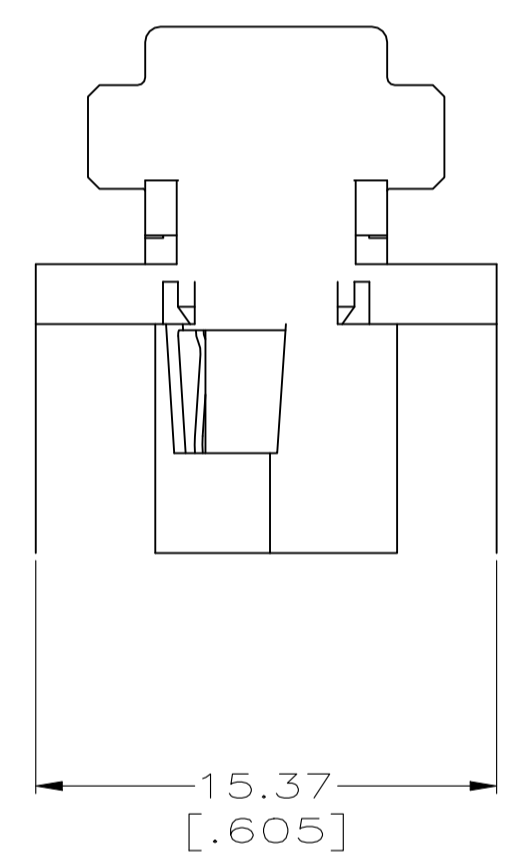
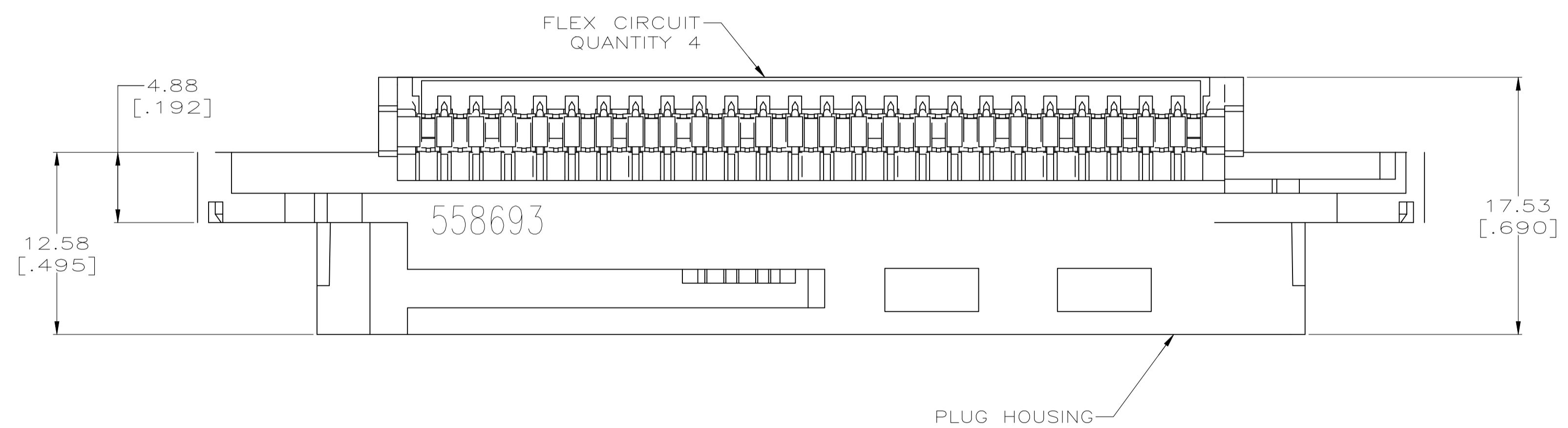


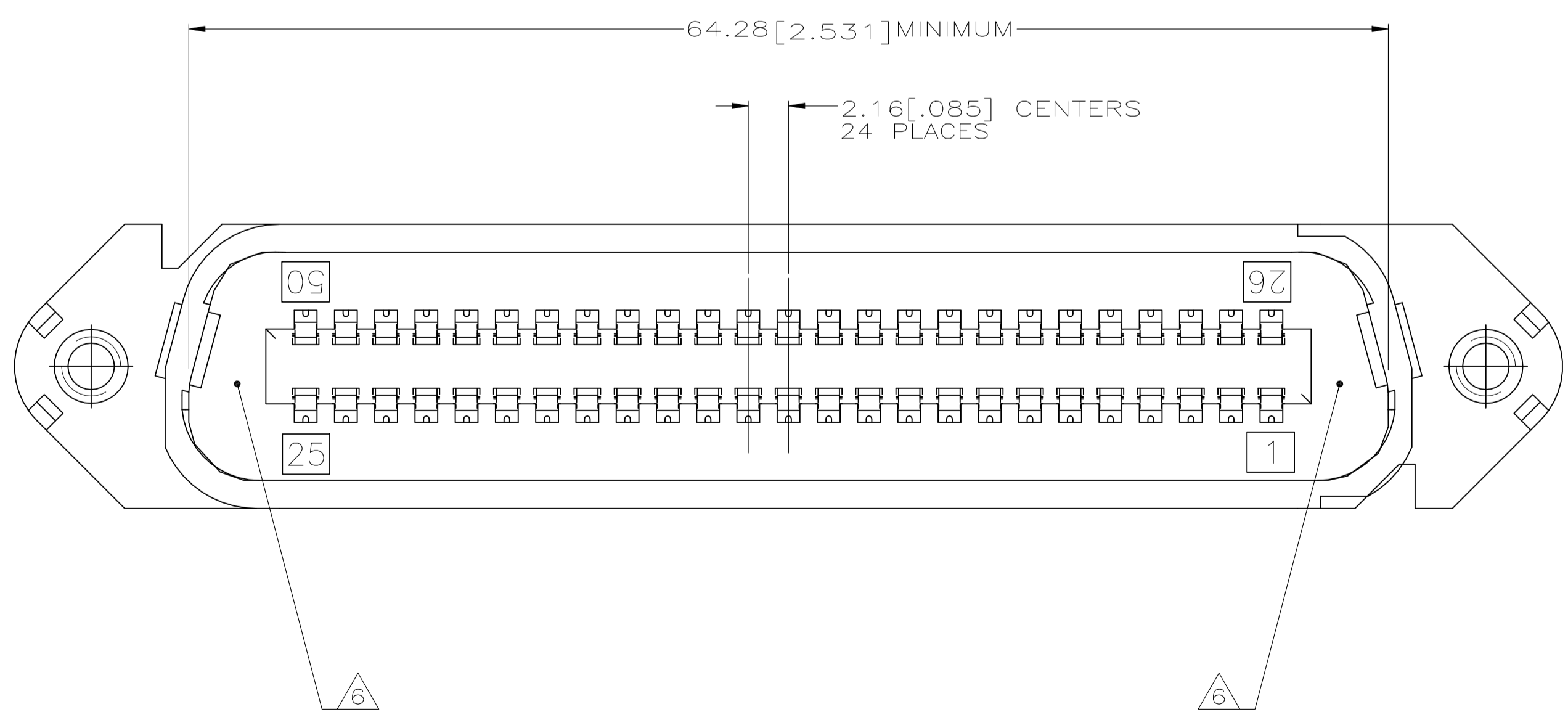
REVISIONS				
REV	DATE	DESCRIPTION	BY	APP'D
J	15NOV2022	REVISED PER ECN-22-184737	AK	SZ



- MATERIAL:**  
 HOUSING - POLYPHENYLENE OXIDE MOLDING COMPOUND, SEE TABLE FOR COLOR.  
 TERMINALS - PHOS BRONZE PLATED WITH EITHER .76µm [.000030] MIN GOLD OR GOLD FLASH OVER PALLADIUM NICKEL .76µm [.000030] MIN TOTAL, ON CONTACT MATING SURFACE. 1.27µm [.000050] MIN NICKEL UNDERPLATE OVER ENTIRE TERMINAL.  
 FLEX CIRCUIT - COPPER LAMINATE POLYESTER FILM.
- THE CONTACT SURFACES OF THE TERMINALS ARE COATED WITH LUBRICANT.
  - DIMENSIONS ARE MAXIMUM UNLESS OTHERWISE SPECIFIED.
  - WIRE SIZE: 24-26 AWG SOLID OR 24-7 STRAND COPPER CONDUCTORS. MAXIMUM INSULATION OF Ø1.14 [.045] IS ACCEPTABLE FOR MOST APPLICATIONS.
  - 558693-1 HAS BEEN SUPERSEDED BY 1-558693-1 (ONLY DIFFERENCE IS HOUSING COLOR).
  - SINK IS ACCEPTABLE IN AREA INDICATED.



CHAMP CATEGORY 5  
WIRING PATTERN



RED	1-558693-1
BLACK	558693-1
COLOR	PART NUMBER

THIS DRAWING IS A CONTROLLED DOCUMENT.

DIMENSIONS: mm [INCHES]	TOLERANCES UNLESS OTHERWISE SPECIFIED:	DIN D. DRUMMOND 04 OCT 94	REV B. FOX 12 DEC 94
0. PLC ± .01	1. PLC ± .01	APVD M. MILLER 20 DEC 94	NAME
2. PLC ± .01	3. PLC ± .01	PRODUCT SPEC	PLUG ASSEMBLY, 50 POSITION, A-SLOT, CHAMP SYSTEM 5
4. PLC ± .01	ANGLES ± .01	APPLICATION SPEC	
MATERIAL	FINISH	SIZE	CAGE CODE
		WEIGHT	DRAWING NO
		0.000000	A1 00779
		C=558693	RESTRICTED TO
		CUSTOMER DRAWING	SCALE 4:1 SHEET 1 of 1 REV J