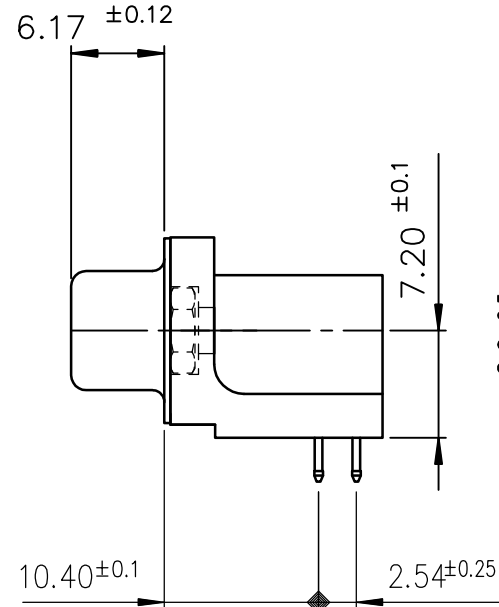
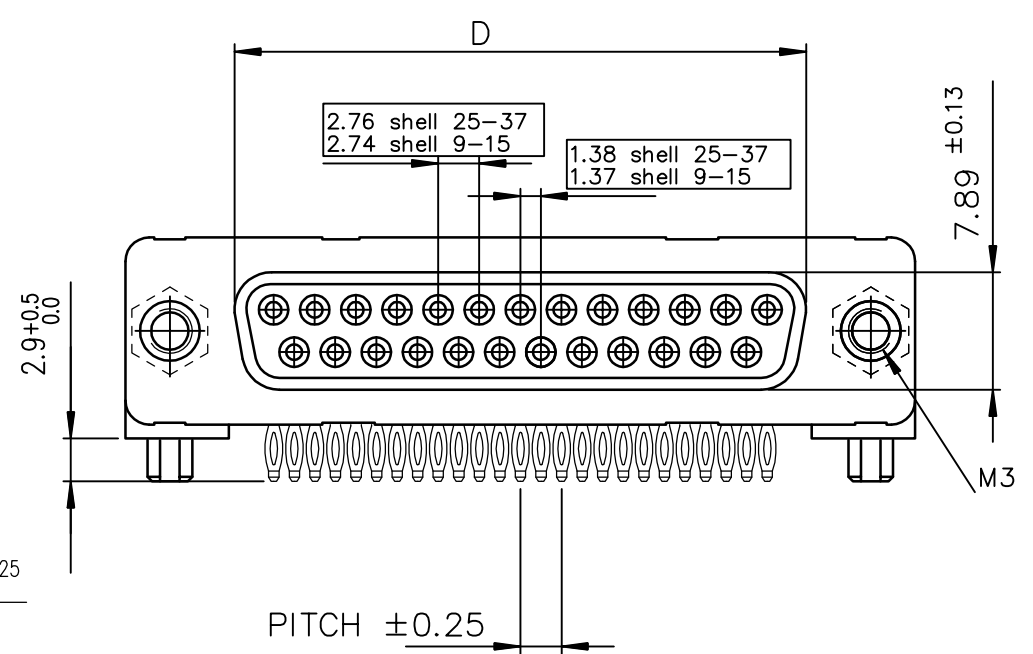


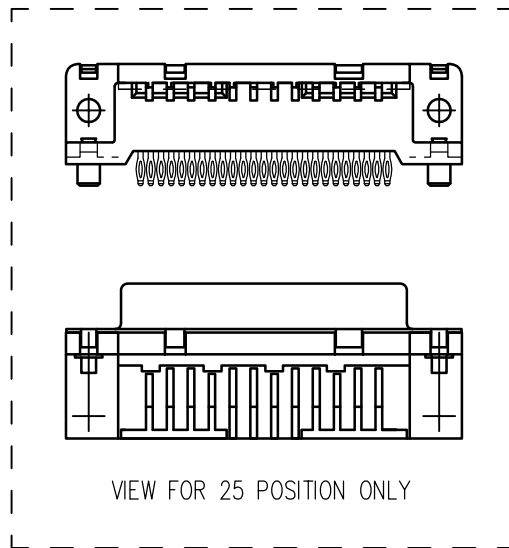
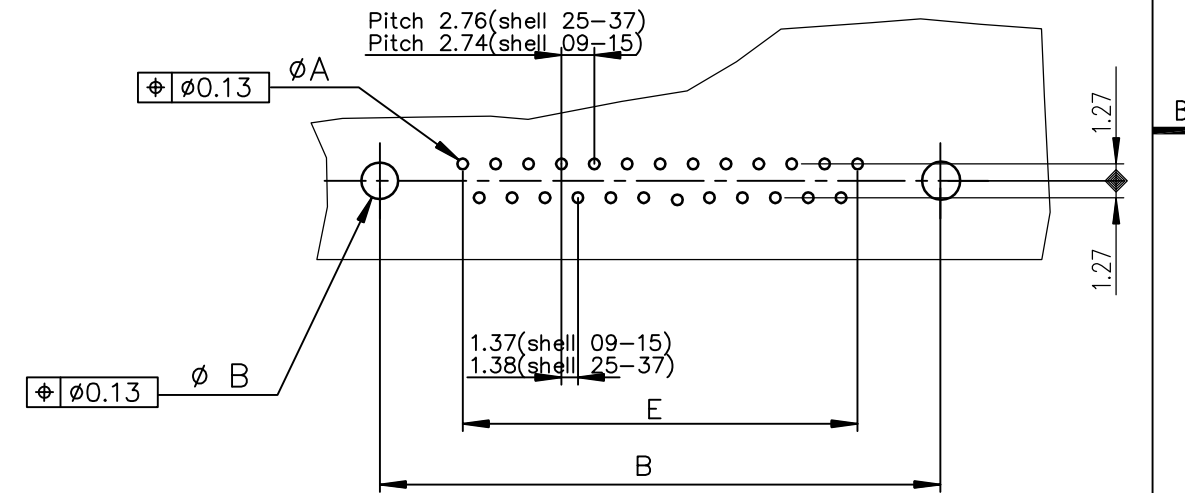
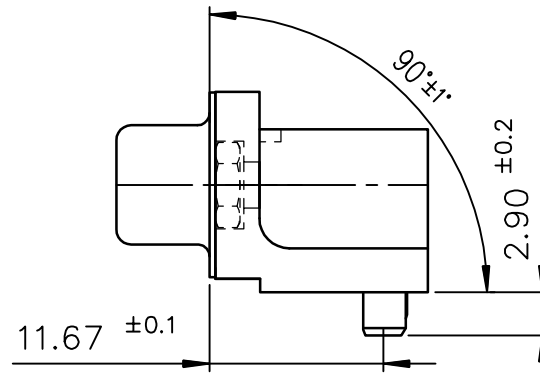
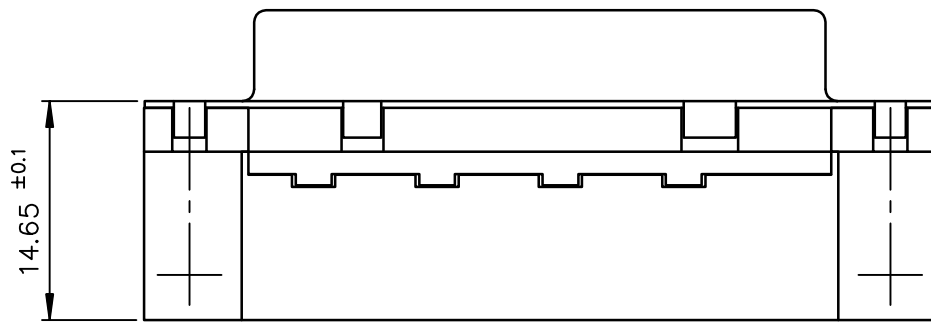
view shown without plastic pin



Detail of plastic pin



PC card drilling dimensions(after plating)  
(thickness 1.60 ±0.20 )



LEAD FREE PART NUMBER

SHELL	A±0.38	B±0.12	C±0.10	D±0.25	E±0.07	PART NUMBER	PART NUMBER
09	30.81	24.99	18.00	16.21	10.96	D09S81C4PL00LF	D09S81C6PL00LF
15	39.14	33.32	26.32	24.54	19.18	D15S81C4PL00LF	D15S81C6PL00LF
25	53.03	47.04	40.04	38.25	33.12	D25S81C4PL00LF	D25S81C6PL00LF
37	69.32	63.50	56.50	54.71	49.68	D37S81C4PL00LF	D37S81C6PL00LF
						Gold flash	0.76 µ gold/GxT

GENERAL CHARACTERISTICS AND ROHS INFORMATIONS:

SEE DRAWING C01-8646-0001

mat'l. code		surface		tolerance		projection		product family	
-		ISO 1302 ✓		ISO 406 ISO 1101				D-SUB	
ltr		ecn no		dr		date		title	
G		ELX-I-18050		MP		2014/06/23		FEMALE CONNECTOR DELTA-D EUROPE	
H		ELX-I-33101		GM		2019-04-01		RIGHT ANGLED PRESS FIT	
J		ELX-I-34612		GM		2019-20-08		scale 2:1	
dr		BOUTTIER		1997/10/22		engr		GREGAR M 2019-04-01	
chr		MITHUN PAUL		2019-20-08		appd		SANOJ P K 2019-20-08	
sheet		revision		J		index		sheet	
1		1						1	
dwg no		sheet 1 of 1		size		type		Product Customer Drawing	
C01-8646-0576		A3							