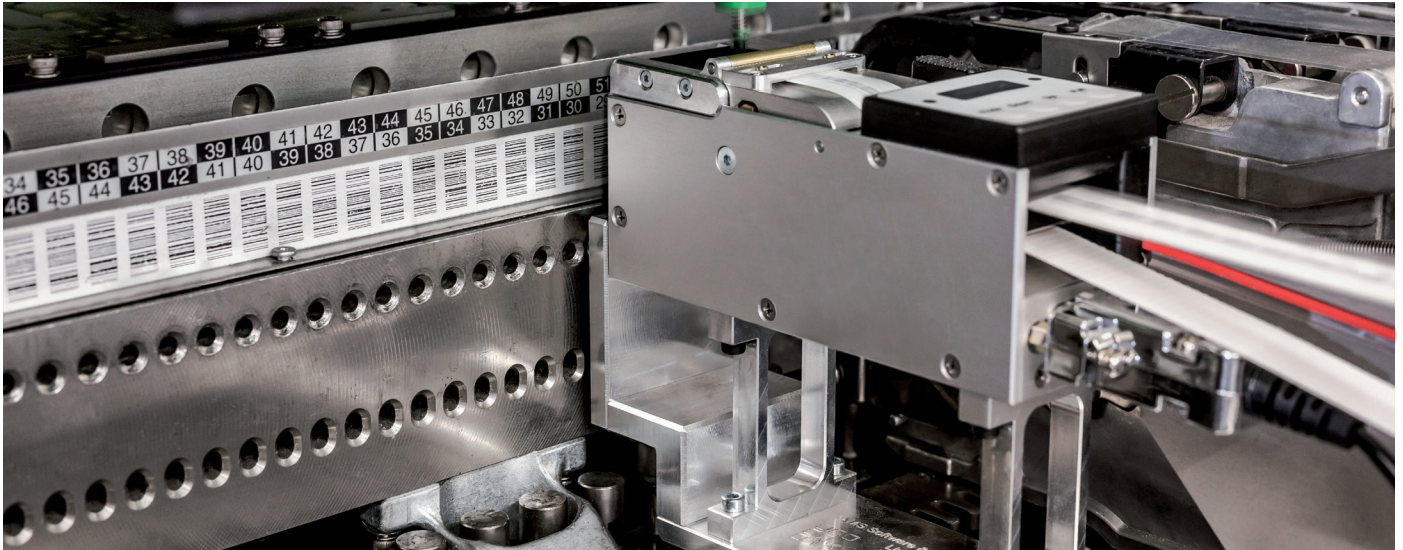


## Need faster product ID? Get help from an ALF

### ALF14 Label Feeder



Quick. Easy. Reliable. That's the **ALF14 Label Feeder**. The hard-working, high-tech helper that adds efficiency to your product manufacturing. With a compact design, this device offers automated label feeding at an affordable price. It fits well with existing SMT lines, plus it offers improved traceability — especially when used with Brady materials: white polyimides, laser markable materials and polyimides masking film. And, the ALF14 helps out in other ways, too:

- **Highly efficient** — keeps up with modern pick equipment using automated guides and sensors
- **Flexible** — multiple adapters fit well with a wide range of pick-and-place machines
- **Saves space** — with a smaller footprint, it fits easily onto feeder racks
- **Custom sizes** — choose from popular stock label sizes or get custom-sized labels

## Product specifications

	ALF14-25	ALF14-40	ALF14-55
ALF14 SMT Compatibility	Assembleon, DATA I/O, Essemtec, Europlacer, Fritsch, Fuji, HANWHA, Heeb-INOTEC, Hitachi, Juki, MyData Mycronic, Panasonic, Samsung, Siplace ASM, Universal, Yamaha		
Size W x D x L in. (mm)	1.693 x 4.528 x 2.125 (43.0 x 115.0 x 54.0)	2.283 x 4.528 x 2.126 (58.0 x 115.0 x 54.0)	2.874 x 5.709 x 2.126 (73.0 x 145.0 x 54.0)
Maximum label size in. (mm)	0.906 x 0.906 (23.0 x 23.0)	0.906 x 1.575 (23.0 x 40.0)	2.165 x 2.165 (55.0 x 55.0)
Maximum liner width in. (mm)	0.984 (25.0)	1.575 (40.0)	2.165 (55.0)
Weight lb (gr)	1.000 (458.0)	1.540 (542.0)	1.710 (736.0)
Minimum label size in. (mm)	0.118 x 0.118 (3.0 x 3.0)		
Minimum liner width in. (mm)	0.315 (8.0)		
Storage temperature range	32 to 104° F (0 to 40° C)		
Operating conditions	59 to 86° F (15 to 30° C)		
Label conveying speed in. / sec	0.394 - 7.874 (10.0 - 200.0 mm)		
Label pick position	0.079 - 0.984 in. (2.0 - 25.0 mm)		
Connector	9 pin SUB-D male		
Power consumption	Max 24W		
Voltage	24V		
Current consumption	Max 1 A		

## Polyimide materials

Material	Print technology	Color	Finish			Thickness	Withstands	Applications
			Gloss	Matte	Adhesive			
B-730	Laser ablation	Black		•	Permanent	4.5 mils	Solvents, abrasion, high heat, low temps	High temperature, printed circuit board and electronic component labeling. Designed for auto-dispense applications. Excellent print permanence
B-732A	Laser ablation	White	•		Permanent	4.6 mils		
B-734	Laser ablation	White		•	Permanent	5.1 mils		
B-7634	N/A	Clear Amber	•		Removable	7.0 mils		Printed circuit board and component process masking, especially designed for auto-apply
B-7727	Thermal transfer	White	•		Permanent	4.0 mils		Printed circuit board and component process labelling, especially designed for auto-apply

 **For more information, visit [BradyID.com](http://BradyID.com) or call 1.888.272.3946**

USA  
Customer Service: 1-888-272-3946  
Inside Sales: 1-888-311-0775  
[BradyID.com](http://BradyID.com)

Canada  
Customer Service: 1-800-263-6179  
[BradyCanada.ca](http://BradyCanada.ca)

Mexico  
Customer Service: 1-800-262-7777  
Inside Sales: 1-800-262-7777 ext 177  
[BradyID.com.mx](http://BradyID.com.mx)

