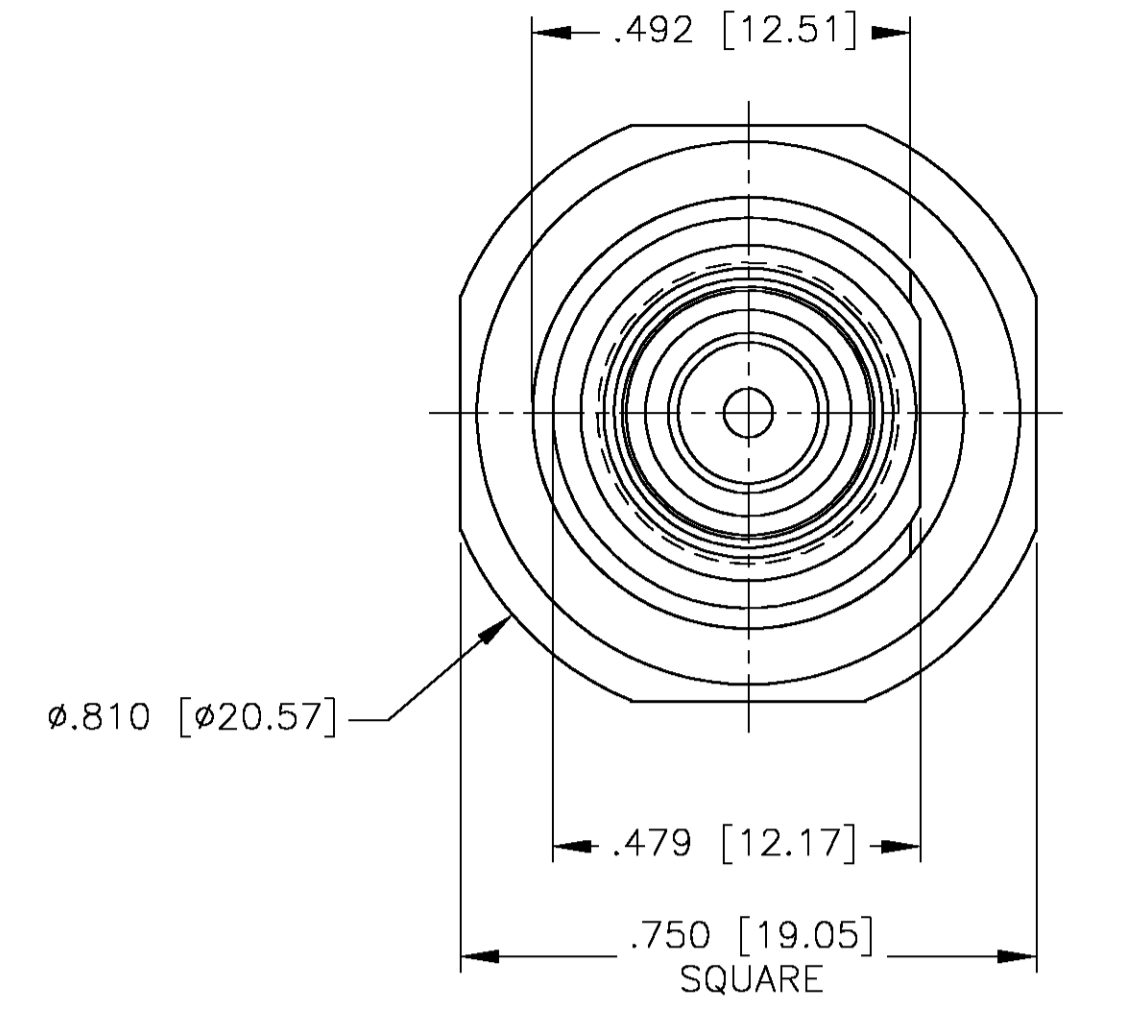


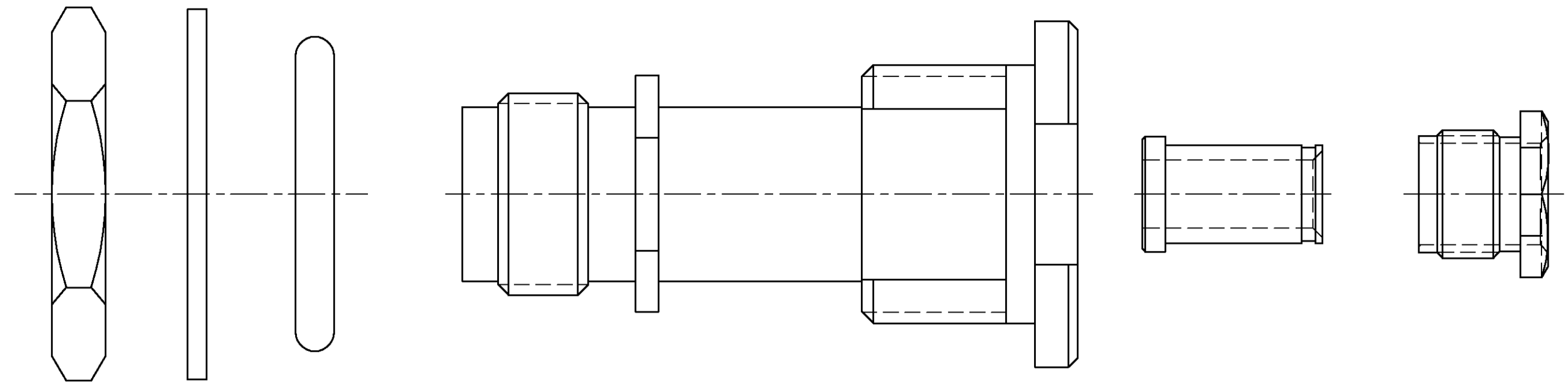
COMPONENT	MATERIAL	FINISH
HOUSING CLAMP NUT	STAINLESS STEEL PER ASTM-A-484 OR ASTM-A-582 TYPE 303	PASSIVATED PER ASTM-A-380
DIELECTRIC	TFE FLUOROCARBON PER ASTM-D-1457	-
CENTER CONTACT	BERYLLIUM COPPER PER ASTM-B-196 OR 197 ALLOY C17300, CONDITION H	GOLD PLATED PER ASTM-B-488
MOUNTING NUT LOCKWASHER	STAINLESS STEEL PER ASTM-A-484 OR ASTM-A-582 TYPE 303	PASSIVATED PER ASTM-A-380
SLEEVE	BRASS PER ASTM-B-16 HALF HARD	GOLD PLATED PER ASTM-B-488
GASKET	SILICONE RUBBER PER ZZ-R-785	-

CONNECTOR SPECS.	
DWV:	1.500 VRMS AT SEA LEVEL
VSWR:	1.25:1 AT 8-19 GHz
CENTER CONTACT RESISTANCE:	1.5 MILLIOHM MAX
RF HIGH POTENTIAL WITHSTANDING VOLTAGE:	1.000 VRMS AT 5-7.5 MHz
RF INSERTION LOSS: (dB MAX):	18 AT 2-3 GHz 06 $\sqrt{f(\text{GHz})}$ AT 3-6 GHz
RF LEAKAGE (dB MIN):	-60 AT 2-3 GHz
CABLE RETENTION FORCES:	40 LBS MIN
CENTER CONTACT RETENTION (AXIAL FORCE):	6 LBS MIN

LOC	DIST	REVISIONS				
DF	XO	REV	DESCRIPTION	DATE	DWN	APVD
		0	RELEASED	7-03	CT	RG

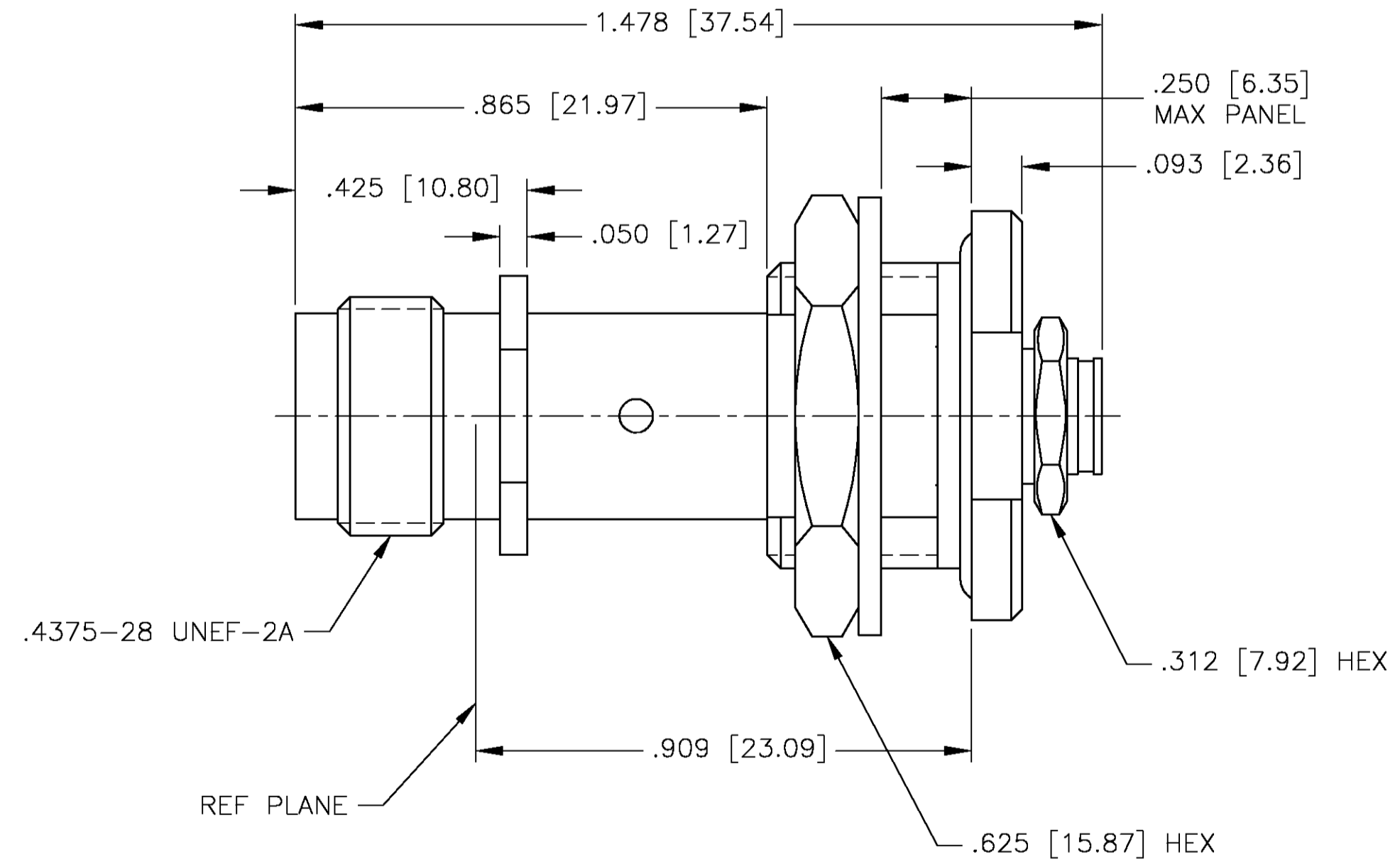
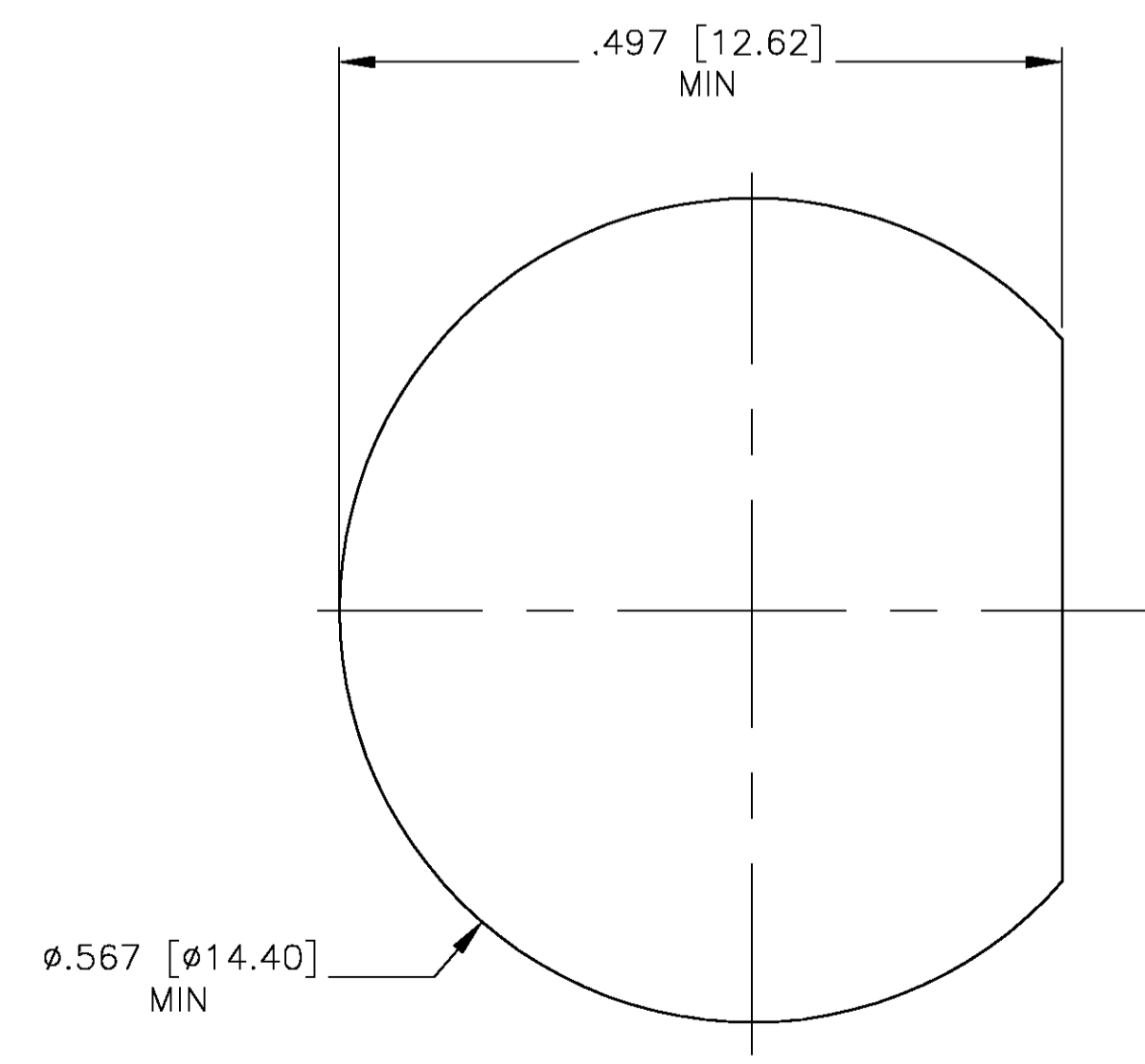


VIEW SHOWN WITHOUT MOUNTING NUT, WASHER & O-RING



AS RECIEVED BY CUSTOMER

RECOMMENED MOUNTING HOLE SCALE 8:1



ASSEMBLED VIEW

DESIGNED TO USE 141 SR	THIS DRAWING IS A CONTROLLED DOCUMENT.	DWN C.C.THOMAS 7-30-03	 Tyco Electronics Corporation Harrisburg, PA 17105
USE ASSEMBLY PROCEDURE 31-076	DIMENSIONS: INCHES	CHK R.GROSS 7-31-03	
CABLE ENTRY DIAMETER MIN	TOLERANCES UNLESS OTHERWISE SPECIFIED:	APVD R.GROSS 7-31-03	NAME OST HIGH FREQ. FEEDTHRU CABLE JACK, WITH SOLDER CLAMP ATTACHMENT,RF
SLEEVE: .145 [3.68]	0 PLC ± - 1 PLC ± - 2 PLC ± - 3 PLC ± .005 4 PLC ± ± -	PRODUCT SPEC	APPLICATION SPEC
CONTACT: .036 [0.91]	ANGLES ± ± -	WEIGHT	RESTRICTED TO
CLAMP NUT: .220 [5.49]	MATERIAL	FINISH	SIZE CAGE CODE DRAWING NO A1 00779 C=1663373
			CUSTOMER DRAWING SCALE 4:1 SHEET 1 OF 1 REV 0