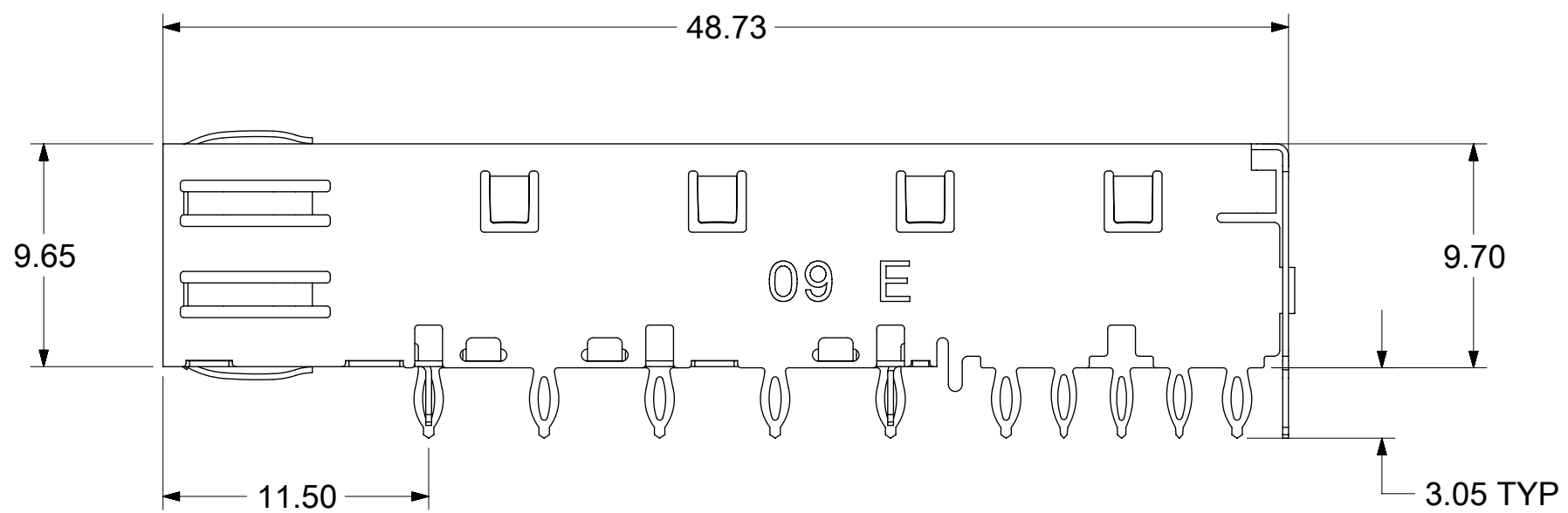
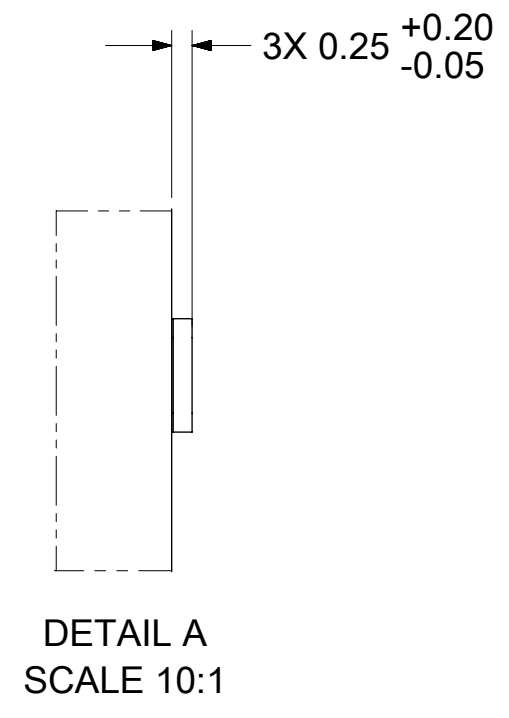
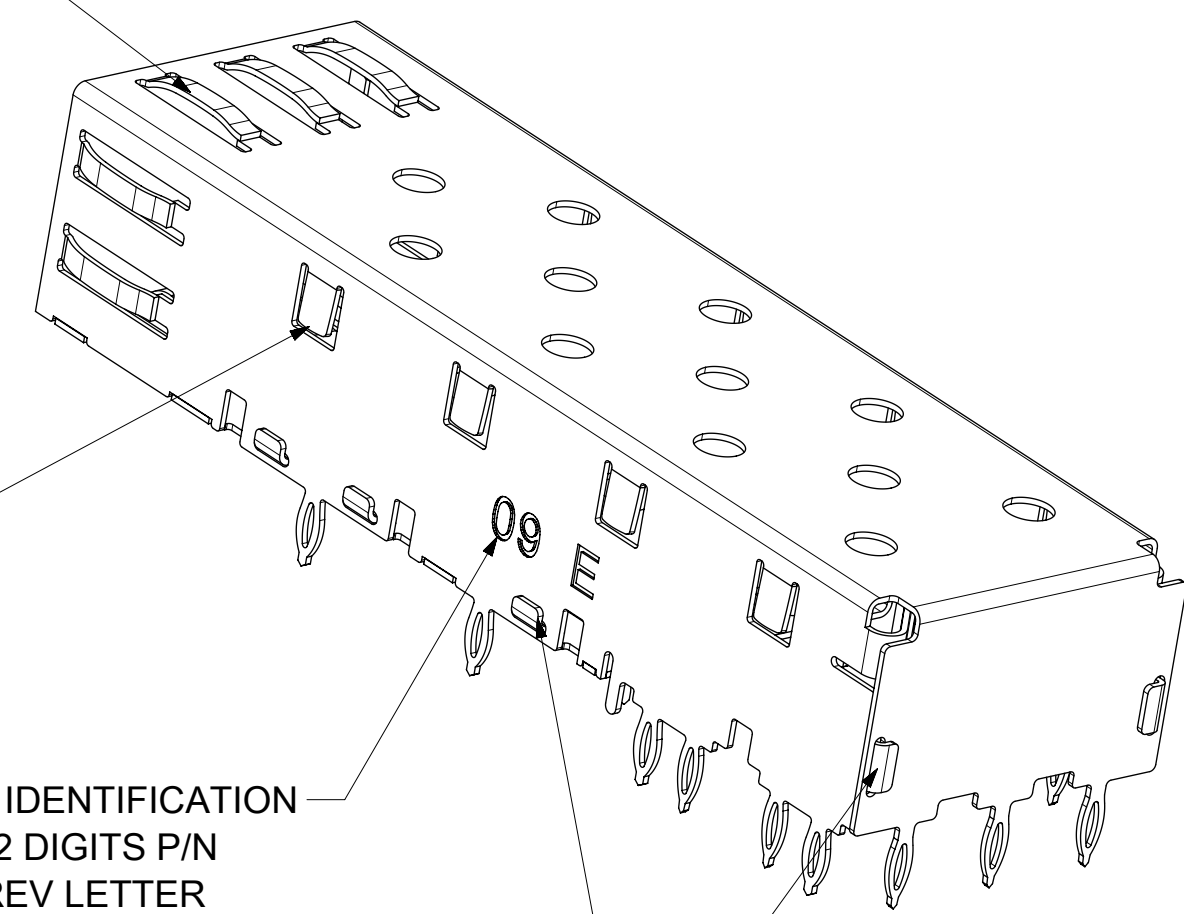


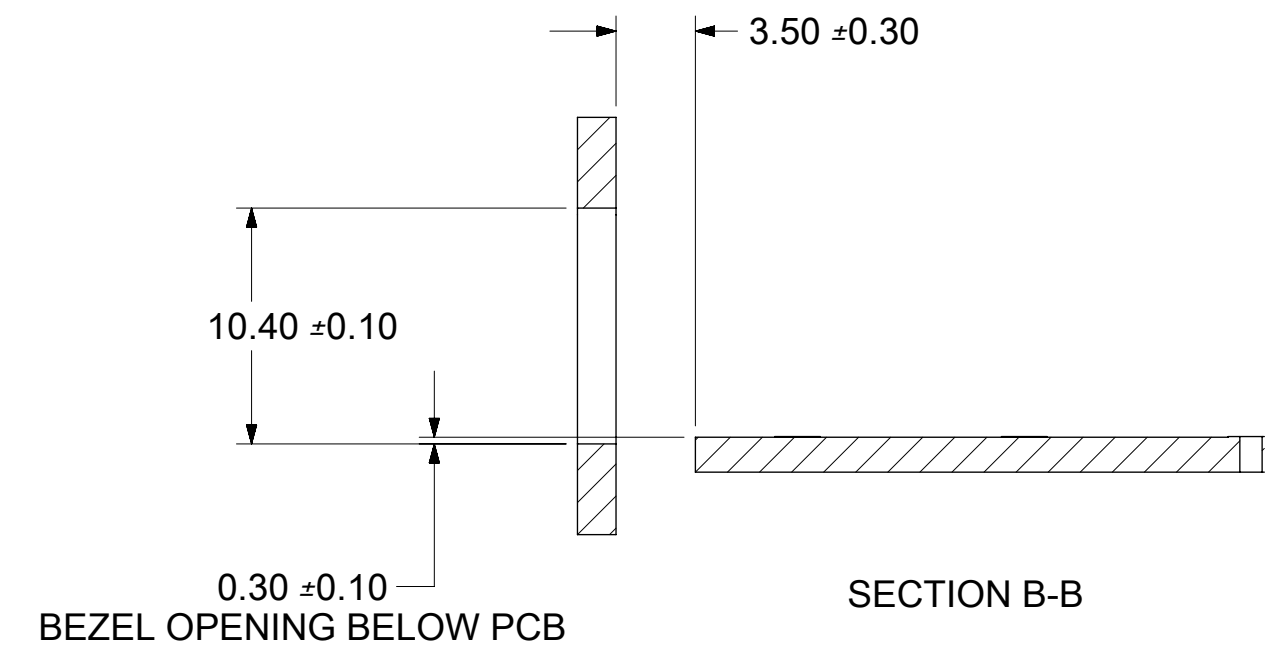
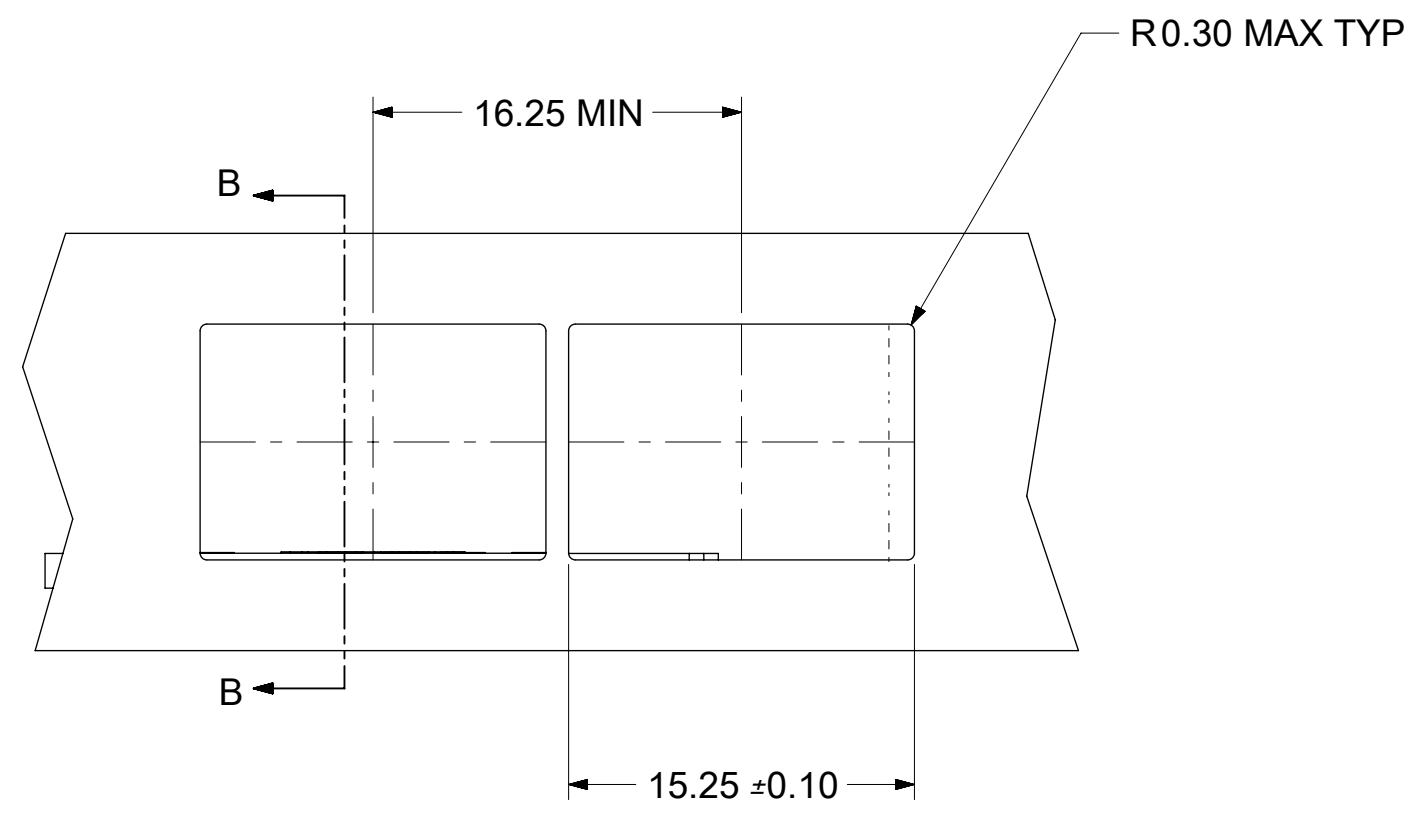
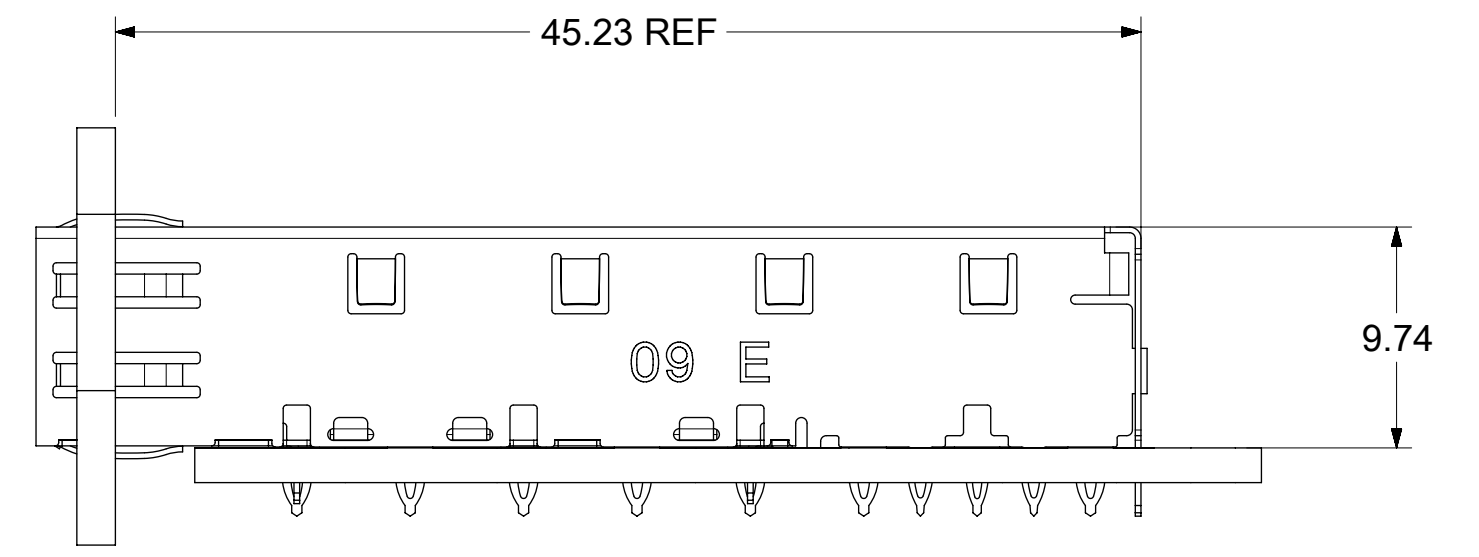
SPRING FINGER GASKET WITH TWO POINTS OF CONTACT. COMPLIES WITH (SFP) MSA BOARD AND BEZEL LOCATIONS.



NOTES:

- PRESS FIT LEGS, 0.120 INCHES LONG 1.57 MINIMUM PCB THICKNESS.
- THIS CAGE IS FOR SINGLE SIDED USE ONLY.
- CAN BE USED WITH THE FOLLOWING LIGHT PIPE PART NUMBERS:
747260001 - LIGHT PIPE FROM BACK TO TOP REFER TO DOCUMENT SD-747260001
747260002 - LIGHT PIPE FROM SIDE TO TOP REFER TO DOCUMENT SD-747260002
- MATERIAL: COPPER ALLOY
PLATING: PRE-PLATED WITH NICKEL
- NO RoHS EXEMPTIONS

THIS DRAWING CONTAINS INFORMATION THAT IS PROPRIETARY TO MOLEX ELECTRONIC TECHNOLOGIES, LLC AND SHOULD NOT BE USED WITHOUT WRITTEN PERMISSION												
SEE REVISION TABLE	EC NO: 116814	2017/04/06	GENERAL TOLERANCES (UNLESS SPECIFIED)		DIMENSION UNITS	SCALE						
	DRWN: PGSHETTY	2017/05/11	ANGULAR TOL ± 1.0 °		MM	3.5:1						
	CHKD: DSUN15	2017/05/11	4 PLACES ±	DRWN BY	PGSHETTY	DATE	2017/04/06					
	REV: APPR: RCHEN08	2017/05/15	3 PLACES ±	CHKD BY	DSUN15	DATE	2017/05/11					
			2 PLACES ± 0.13	APPR BY	RCHEN08	DATE	2017/05/15					
		1 PLACE ± 0.25	DRAFT WHERE APPLICABLE MUST REMAIN WITHIN DIMENSIONS		DRAWING SIZE	THIRD ANGLE PROJECTION	SERIES	MATERIAL NUMBER	CUSTOMER	PRODUCT CUSTOMER DRAWING		
D	C	0 PLACES ±	C	C	C	C	74737	747370009		DOC TYPE	DOC PART	SHEET NUMBER
							747370009		PSD	ASY	1 OF 4	



THIS DRAWING CONTAINS INFORMATION THAT IS PROPRIETARY TO MOLEX ELECTRONIC TECHNOLOGIES, LLC AND SHOULD NOT BE USED WITHOUT WRITTEN PERMISSION

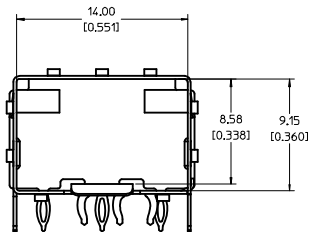
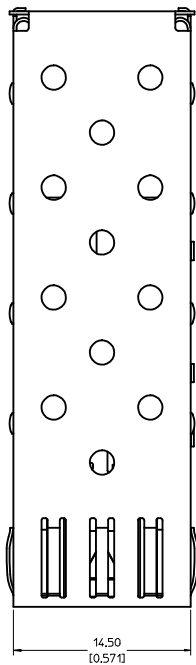
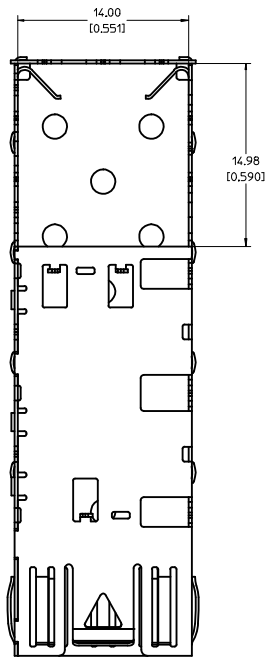
SEE REVISION TABLE EC NO: 116814 DRWN: PGSHETTY CHKD: DSUN15 REV / APPR: RCHEN08	GENERAL TOLERANCES (UNLESS SPECIFIED)		DIMENSION UNITS	SCALE	
	ANGULAR TOL ± 1.0 °		MM	3:1	
	4 PLACES ±	DRWN BY	DATE		
	3 PLACES ±	PGSHETTY	2017/04/06		
	2 PLACES ± 0.13	CHKD BY	DATE		
1 PLACE ± 0.25	DSUN15	2017/05/11		PRODUCT CUSTOMER DRAWING SERIES: 74737 MATERIAL NUMBER: 747370009 CUSTOMER:	
0 PLACES ±	RCHEN08	2017/05/15			
DRAFT WHERE APPLICABLE MUST REMAIN WITHIN DIMENSIONS		DRAWING SIZE	THIRD ANGLE PROJECTION		DOCUMENT NUMBER
		C			747370009
					DOC TYPE: PSD DOC PART: ASY SHEET NUMBER: 3 OF 4

REV	DATE	DESCRIPTION
A	2006/11/30	INITIAL RELEASE
B	2007/01/23	[1] CHANGED MODULE EJECT FEATURE TOL FROM +/- 1DEG TO +/-5DEG; [2] CHANGED EJECT ARM ANGLE TOL FROM +/-1DEG TO 50DEG MIN; [3] CHANGED EMI SPRING FINGER OVERLAP FROM 0.21MM TO 0.01MM MIN; [4] ADDED DIM TO LEGS: OVERALL LENGTH, LENGTH FROM TIP TO SLOT, AND SLOT LENGTH.; [5] DELETED COMMENTS SECTION FROM REV CHART.; [6] ADDED "REF" TO DIM K2 ON SHEET 2.
C	2007/04/25	[1] ADDED REV SHEET; [2] UPDATED REV NOTES A-B; [3] UPDATD DRAWING TO REFLECT CHG'S MADE TO EM-74737-009-ASSY REV C; [4] ON SHT1 ROTATED BTM VIEW 180 DEGREES.
D	2017/04/05	REMASTERED FROM SD-74737-009 REV_C TO 747370009 PSD ASY REV_D IN NX SHEET 2 : F1 : ADDED TYP TO THE DIM 2.00 SHEET 3 : E7 : ADDED DIM R0.3 MAX TYP

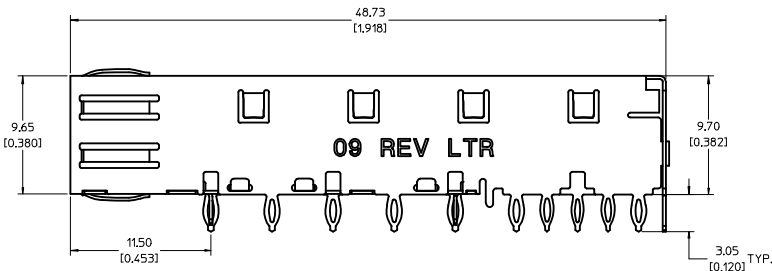
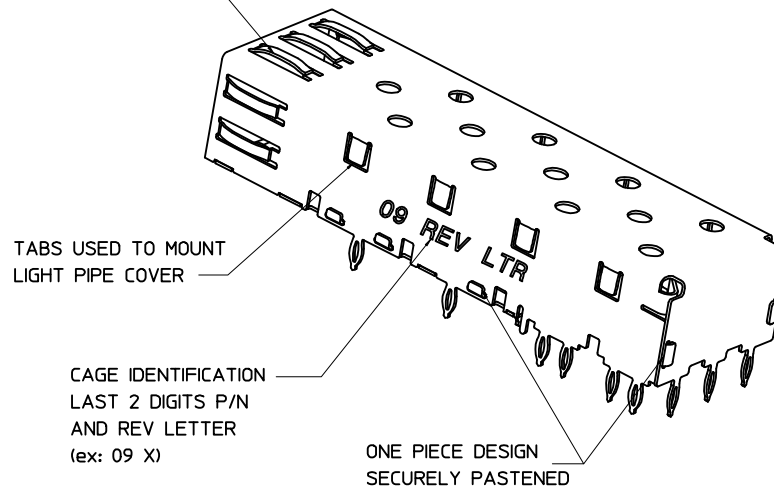
THIS DRAWING CONTAINS INFORMATION THAT IS PROPRIETARY TO MOLEX ELECTRONIC TECHNOLOGIES, LLC AND SHOULD NOT BE USED WITHOUT WRITTEN PERMISSION

SEE REVISION TABLE	EC NO: 116814	2017/04/06	GENERAL TOLERANCES (UNLESS SPECIFIED)	DIMENSION UNITS	SCALE	molex SFP ONE PIECE CAGE PRESS-FIT (0.120 LEGS)	
	DRWN: PGSHETTY	2017/05/11		MM	1:1		
	CHKD: DSUN15	2017/05/15		ANGULAR TOL ± 1.0 °	DRWN BY		DATE
	REV / APPR: RCHEN08			4 PLACES ±	PGSHETTY		2017/04/06
				3 PLACES ±	CHKD BY		DATE
				2 PLACES ± 0.13	DSUN15		2017/05/11
				1 PLACE ± 0.25	APPR BY		DATE
				0 PLACES ±	RCHEN08		2017/05/15
				DRAFT WHERE APPLICABLE MUST REMAIN WITHIN DIMENSIONS	DRAWING SIZE		THIRD ANGLE PROJECTION
					C		
RELEASE STATUS		P1	RELEASE DATE	15.05.2017	06:09:50		

SERIES	MATERIAL NUMBER	CUSTOMER
74737	747370009	
DOCUMENT NUMBER	DOC TYPE	DOC PART
747370009	PSD	ASY
SHEET NUMBER	4 OF 4	



SPRING FINGER GASKET WITH TWO POINTS OF CONTACT. COMPLIES WITH (SFP) MSA BOARD AND BEZEL LOCATIONS.



NOTES:

- PRESS FIT LEGS, 0.120 INCHES LONG. 1.57 [0.062] MINIMUM PCB THICKNESS.
- THIS CAGE IS FOR SINGLE SIDED USE ONLY.
- CAN BE USED WITH THE FOLLOWING LIGHT PIPE PART NUMBERS:

747260001 - LIGHT PIPE FROM BACK TO TOP
(REFER TO DOCUMENT SD-74726-001)

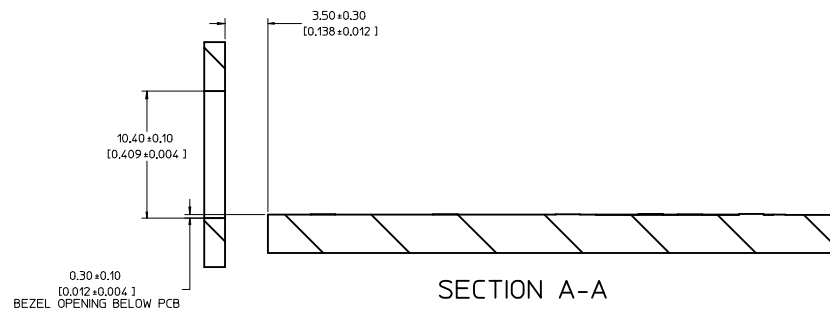
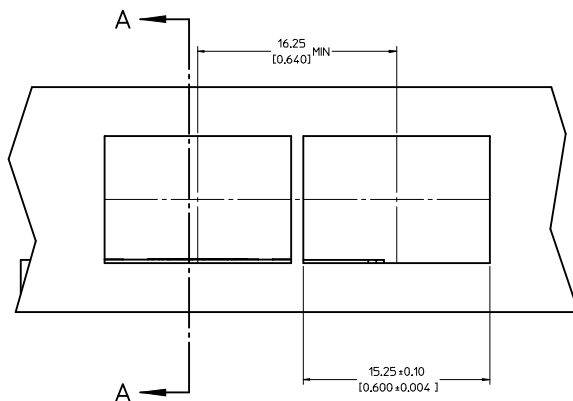
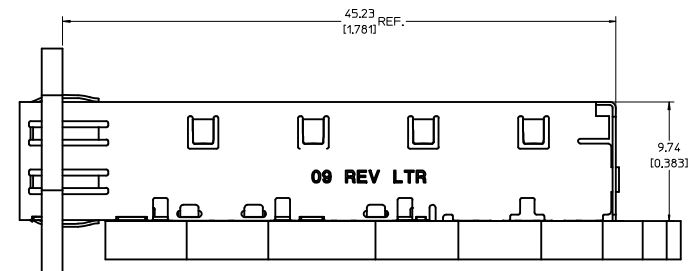
747260002 - LIGHT PIPE FROM SIDE TO TOP
(REFER TO DOCUMENT SD-74726-002)

4. MATERIAL: COPPER ALLOY
PLATING: PRE-PLATED WITH NICKEL

5. THIS PART MEETS THE RESTRICTION OF HAZARDOUS SUBSTANCES IN ELECTRICAL AND ELECTRONIC EQUIPMENT (ROHS) DIRECTIVE (2002/95/EC).

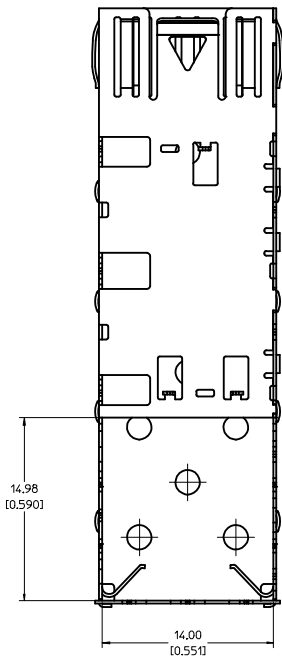
UPDATED 3D MODELS EC NO: USY2008-018623 DRAWN BY: CCOX CHKD: CCOX APPR: RMAHMOOD 2007/10/05 2007/10/21 2007/10/23	QUALITY SYMBOLS	GENERAL TOLERANCES (UNLESS SPECIFIED)	DIMENSION STYLE	SCALE	DESIGN UNITS	THIRD ANGLE PROJECTION																	
	$\nabla=0$ $\nabla=0$	<table border="1"> <tr> <th></th> <th>mm</th> <th>INCH</th> </tr> <tr> <td>4 PLACES</td> <td>±---</td> <td>±---</td> </tr> <tr> <td>3 PLACES</td> <td>±---</td> <td>±.005</td> </tr> <tr> <td>2 PLACES</td> <td>±0.13</td> <td>±.01</td> </tr> <tr> <td>1 PLACE</td> <td>±0.25</td> <td>±---</td> </tr> </table>		mm	INCH	4 PLACES	±---	±---	3 PLACES	±---	±.005	2 PLACES	±0.13	±.01	1 PLACE	±0.25	±---	MM/IN	5:1	METRIC			
		mm	INCH																				
	4 PLACES	±---	±---																				
3 PLACES	±---	±.005																					
2 PLACES	±0.13	±.01																					
1 PLACE	±0.25	±---																					
<table border="1"> <tr> <td>DRAWN BY</td> <td>DATE</td> <td>TITLE</td> </tr> <tr> <td>CCOX</td> <td>2006/11/22</td> <td>SFP ONE PIECE CAGE PRESS-FIT (0.120 LEGS)</td> </tr> <tr> <td>CHECKED BY</td> <td>DATE</td> <td></td> </tr> <tr> <td>RMAHMOOD</td> <td>2006/11/22</td> <td></td> </tr> <tr> <td>APPROVED BY</td> <td>DATE</td> <td></td> </tr> </table>	DRAWN BY	DATE	TITLE	CCOX	2006/11/22	SFP ONE PIECE CAGE PRESS-FIT (0.120 LEGS)	CHECKED BY	DATE		RMAHMOOD	2006/11/22		APPROVED BY	DATE		<table border="1"> <tr> <td>MATERIAL NO.</td> <td>DOCUMENT NO.</td> </tr> <tr> <td>747370009</td> <td>SD-74737-009</td> </tr> </table>	MATERIAL NO.	DOCUMENT NO.	747370009	SD-74737-009	<table border="1"> <tr> <td>SHEET NO.</td> </tr> <tr> <td>1 OF 4</td> </tr> </table>	SHEET NO.	1 OF 4
DRAWN BY	DATE	TITLE																					
CCOX	2006/11/22	SFP ONE PIECE CAGE PRESS-FIT (0.120 LEGS)																					
CHECKED BY	DATE																						
RMAHMOOD	2006/11/22																						
APPROVED BY	DATE																						
MATERIAL NO.	DOCUMENT NO.																						
747370009	SD-74737-009																						
SHEET NO.																							
1 OF 4																							
DRAFT WHERE APPLICABLE MUST REMAIN WITHIN DIMENSIONS																							
THIS DRAWING CONTAINS INFORMATION THAT IS PROPRIETARY TO MOLEX INCORPORATED AND SHOULD NOT BE USED WITHOUT WRITTEN PERMISSION																							

20 19 18 17 16 15 14 13 12 11 10 9 8 7 6 5 4 3 2 1

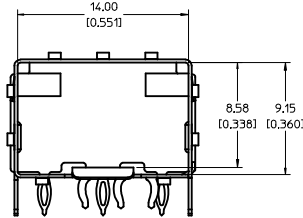
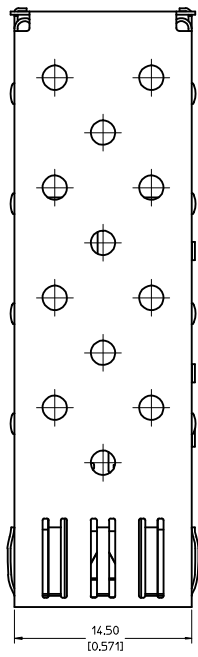


UPDATED 3D MODELS EC NO: USY2008-01883 DRAWN BY: CCOX 2007/10/05 CHYK: 2007/10/21 APPR: RMAHMOOD 2007/10/23	QUALITY SYMBOLS	GENERAL TOLERANCES (UNLESS SPECIFIED)		DIMENSION STYLE	SCALE	DESIGN UNITS	THIRD ANGLE PROJECTION	
	▽=0 ▽=0	mm	INCH	MM/IN	5:1	METRIC		
		4 PLACES ± --- ± ---	3 PLACES ± --- ± .005	2 PLACES ± 0.13 ± .01	1 PLACE ± 0.25 ± ---	DRAWN BY: CCOX DATE: 2006/11/22 CHECKED BY: RMAHMOOD DATE: 2006/11/22 APPROVED BY: DATE:		TITLE
		ANGULAR ± 1°		MATERIAL NO. 747370009 DOCUMENT NO. SD-74737-009		MOLEX INCORPORATED SHEET NO. 3 OF 4		
	DRAFT WHERE APPLICABLE MUST REMAIN WITHIN DIMENSIONS		THIS DRAWING CONTAINS INFORMATION THAT IS PROPRIETARY TO MOLEX INCORPORATED AND SHOULD NOT BE USED WITHOUT WRITTEN PERMISSION					

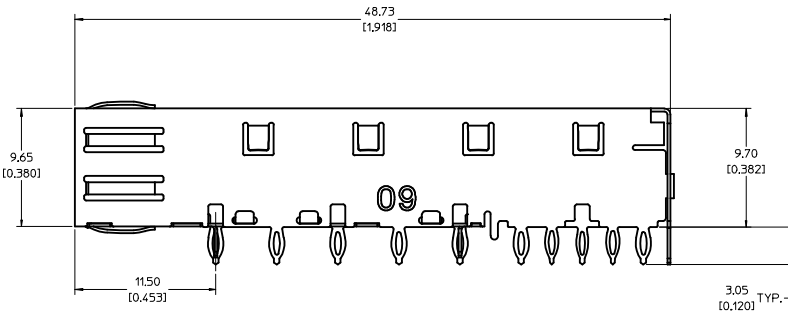
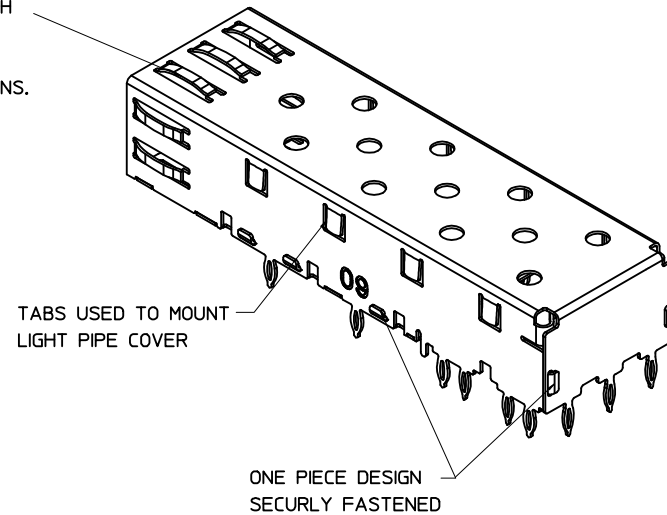
19 18 17 16 15 14 13 12 11 10 9 8 7 6 5 4 3 2 1



BOTTOM VIEW



SPRING FINGER GASKET WITH TWO POINTS OF CONTACT. COMPLIES WITH (SFP) MSA BOARD AND BEZEL LOCATIONS.



NOTES:

1. ALL PART TO BE 100 PERCENT INSPECTED.
2. PRESS FIT LEGS, 0.120 INCHES LONG. 1.57 [0.062] MINIMUM PCB THICKNESS.
3. THIS CAGE IS FOR SINGLE SIDED USE ONLY.
4. CAN BE USED WITH THE FOLLOWING LIGHT PIPE PART NUMBERS:

747260001 - LIGHT PIPE FROM BACK TO TOP
(REFER TO DOCUMENT SD-74726-001)

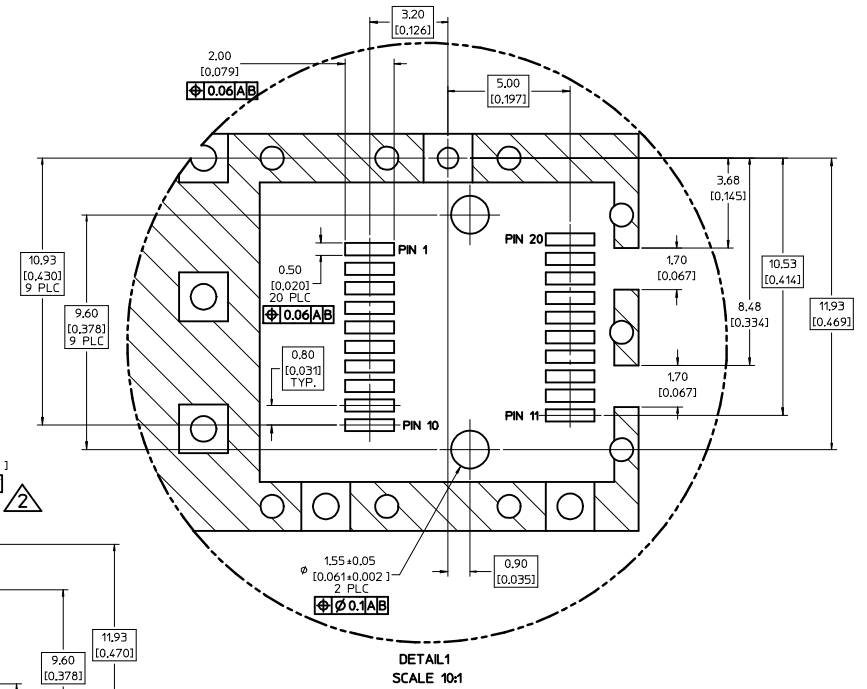
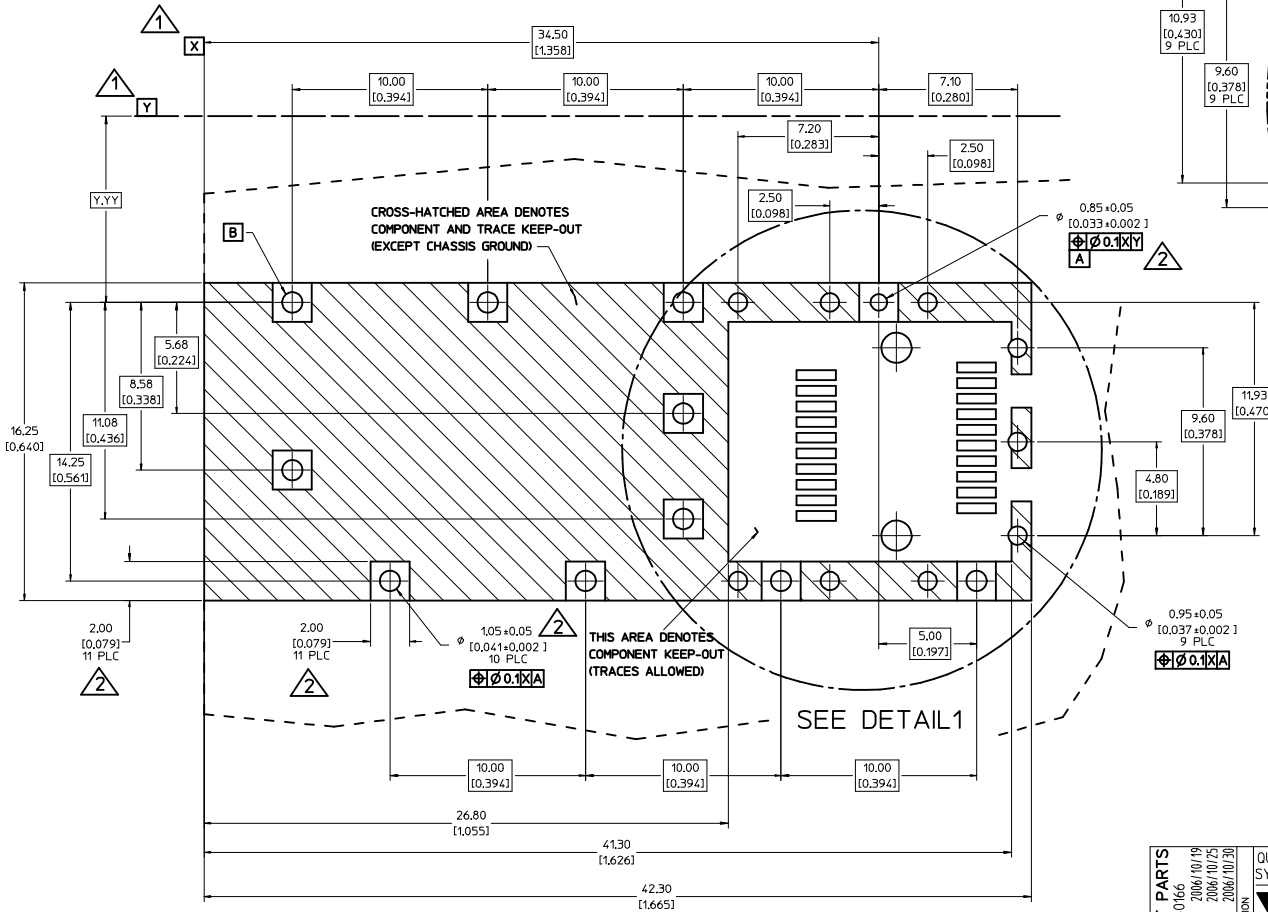
747260002 - LIGHT PIPE FROM SIDE TO TOP
(REFER TO DOCUMENT SD-74726-002)

5. MATERIAL: COPPER ALLOY
PLATING: PRE-PLATED WITH NICKEL

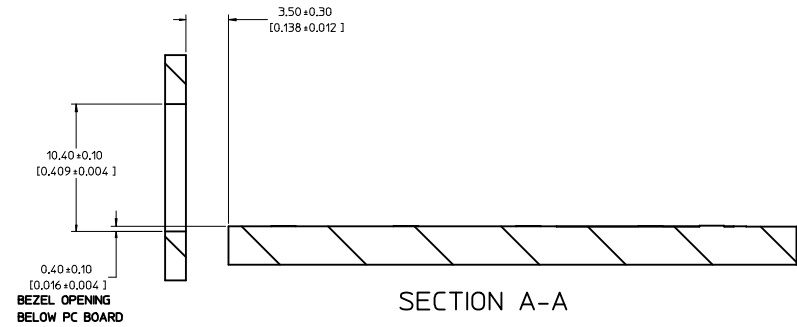
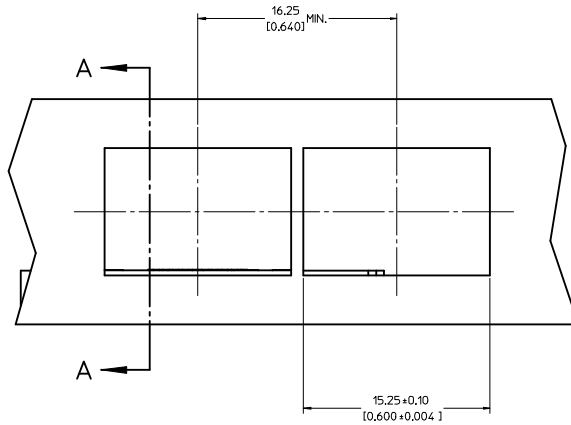
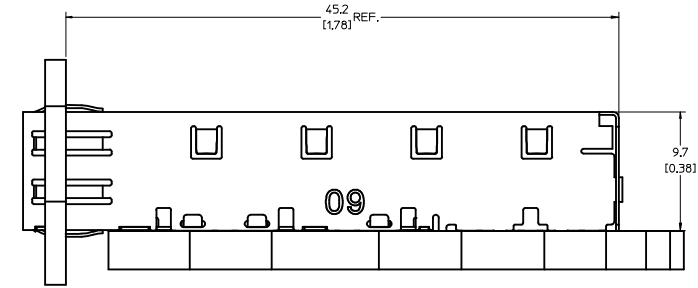
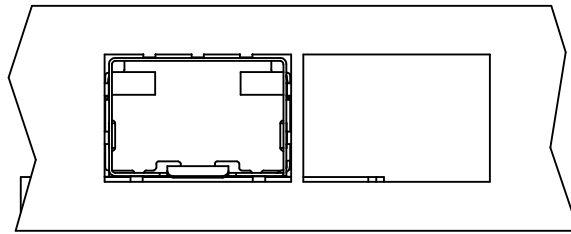
6. THIS PART MEETS THE RESTRICTION OF HAZARDOUS SUBSTANCES IN ELECTRICAL AND ELECTRONIC EQUIPMENT (ROHS) DIRECTIVE (2002/95/EC).

100% INSPECT PARTS EC NO: USY2007-0166 DRAWN BY: CCOX CHKD: CCOX APPR: RMAHMOOD DATE: 2006/10/19 DATE: 2006/10/25 DATE: 2006/10/30	QUALITY SYMBOLS ▽=0 ▽=0	GENERAL TOLERANCES (UNLESS SPECIFIED) <table border="1"> <tr> <th></th> <th>mm</th> <th>INCH</th> </tr> <tr> <td>4 PLACES</td> <td>±.005</td> <td>±.0005</td> </tr> <tr> <td>3 PLACES</td> <td>±.010</td> <td>±.0010</td> </tr> <tr> <td>2 PLACES</td> <td>±.013</td> <td>±.0013</td> </tr> <tr> <td>1 PLACE</td> <td>±.025</td> <td>±.0025</td> </tr> </table> ANGULAR ± 1°		mm	INCH	4 PLACES	±.005	±.0005	3 PLACES	±.010	±.0010	2 PLACES	±.013	±.0013	1 PLACE	±.025	±.0025	DIMENSION STYLE MM/IN	SCALE 5:1	DESIGN UNITS METRIC	THIRD ANGLE PROJECTION
		mm	INCH																		
	4 PLACES	±.005	±.0005																		
	3 PLACES	±.010	±.0010																		
2 PLACES	±.013	±.0013																			
1 PLACE	±.025	±.0025																			
DRAFT WHERE APPLICABLE MUST REMAIN WITHIN DIMENSIONS	DRAWN BY: CCOX DATE: 2006/10/19	CHECKED BY: RMAHMOOD DATE: 2006/10/19	APPROVED BY:	MATERIAL NO. 747370009	DOCUMENT NO. SD-74737-020	TITLE SFP ONE PIECE CAGE PRESS-FIT (0.120 LEGS) 100% INSPECTION REQUIRED															
				MOLEX INCORPORATED																	
						SHEET NO. 1 OF 3															

- DATUM AND BASIC DIMENSIONS ESTABLISHED BY CUSTOMER.
- PADS AND VIAS ARE CHASSIS GROUND.
- HOLE LAYOUT SHOWN IS FOR SINGLE SIDED MOUNTING ONLY.
- CONNECTOR PAD LAYOUT PER SFP MSA, WILL ACCOMMODATE MOLEX CONNECTOR SERIES 74441 OR EQUIVALENT.



100% INSPECT PARTS IEC NO: USY2007-0166 DRAWN: CCOX 2006/10/19 CHYK: 2006/10/25 APPR: RMAHMOOD 2006/10/20	QUALITY SYMBOLS	GENERAL TOLERANCES (UNLESS SPECIFIED)	DIMENSION STYLE	SCALE	DESIGN UNITS	THIRD ANGLE PROJECTION	
	$\nabla=0$ $\nabla=0$	mm INCH 4 PLACES ± --- ± --- 3 PLACES ± --- ± .005 2 PLACES ± 0.13 ± .01 1 PLACE ± 0.25 ± --- ANGULAR ± 1°	MM/IN	8:1	METRIC		
	DESCRIPTION	DRAFT WHERE APPLICABLE MUST REMAIN WITHIN DIMENSIONS	DRAWN BY CCOX	DATE 2006/10/19	CHECKED BY RMAHMOOD	DATE 2006/10/19	APPROVED BY
			MATERIAL NO. 747370009	DOCUMENT NO. SD-74737-020	SFP ONE PIECE CAGE PRESS-FIT (0.120 LEGS) 100% INSPECTION REQUIRED		MOLEX INCORPORATED
						SHEET NO. 2 OF 3	



100% INSPECT PARTS IEC NO: USY2007-0166 DRAWN: CCOX 2006/10/19 CHYK: 2006/10/25 APPROV: RMAHMOOD 2006/10/20	QUALITY SYMBOLS ▽=0 ▽=0	GENERAL TOLERANCES (UNLESS SPECIFIED) <table border="1"> <tr> <th></th> <th>mm</th> <th>INCH</th> </tr> <tr> <td>4 PLACES</td> <td>±---</td> <td>±---</td> </tr> <tr> <td>3 PLACES</td> <td>±---</td> <td>±.005</td> </tr> <tr> <td>2 PLACES</td> <td>±0.13</td> <td>±.01</td> </tr> <tr> <td>1 PLACE</td> <td>±0.25</td> <td>±---</td> </tr> </table>		mm	INCH	4 PLACES	±---	±---	3 PLACES	±---	±.005	2 PLACES	±0.13	±.01	1 PLACE	±0.25	±---	DIMENSION STYLE MM/IN	SCALE 5:1	DESIGN UNITS METRIC	THIRD ANGLE PROJECTION
		mm	INCH																		
	4 PLACES	±---	±---																		
	3 PLACES	±---	±.005																		
2 PLACES	±0.13	±.01																			
1 PLACE	±0.25	±---																			
MATERIAL NO. 747370009	DOCUMENT NO. SD-74737-020	TITLE SFP ONE PIECE CAGE PRESS-FIT (0.120 LEGS) 100% INSPECTION REQUIRED	MOLEX INCORPORATED																		
SIZE D	THIS DRAWING CONTAINS INFORMATION THAT IS PROPRIETARY TO MOLEX INCORPORATED AND SHOULD NOT BE USED WITHOUT WRITTEN PERMISSION					SHEET NO. 3 OF 3															
DRAFT WHERE APPLICABLE MUST REMAIN WITHIN DIMENSIONS																					