

CTSPMA4020F Series

From .47µH to 10µH



SPECIFICATIONS

Parts are available in ±20% inductance tolerance only

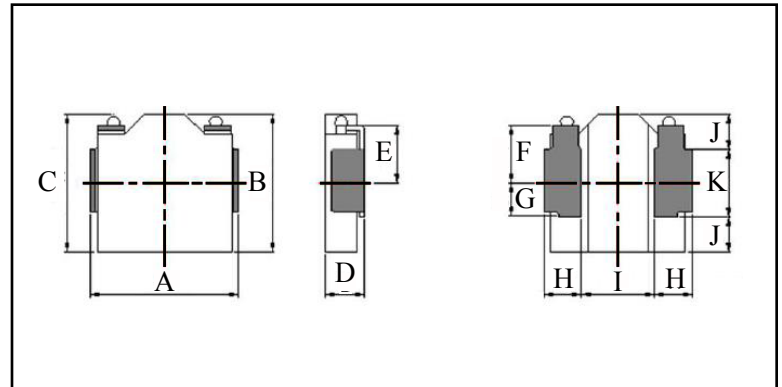
Part Number	Inductance (µH)	L Test Condition	DCR Max. (mΩ)	Isat Max. (A)	Irms Max. (A)
CTSPMA4020F-R47M	0.47	100KHz, 1V	8.9	16.0	9.4
CTSPMA4020F-R68M	0.68	100KHz, 1V	13.2	9.4	8.3
CTSPMA4020F-1R0M	1.00	100KHz, 1V	18.5	9.5	6.5
CTSPMA4020F-1R5M	1.50	100KHz, 1V	24.5	7.1	5.4
CTSPMA4020F-2R2M	2.20	100KHz, 1V	35.5	5.5	4.3
CTSPMA4020F-3R3M	3.30	100KHz, 1V	52.0	4.5	3.4
CTSPMA4020F-4R7M	4.70	100KHz, 1V	91.0	4.0	2.7
CTSPMA4020F-6R8M	6.80	100KHz, 1V	117.0	3.3	2.3
CTSPMA4020F-100M	10	100KHz, 1V	235.0	2.4	1.5

PHYSICAL DIMENSIONS

Size	A	B	C Max.	D Max.	E	F
mm	4.4±0.2	4.1±0.2	4.4	2.0	1.60	1.60
inches	0.17±0.008	0.16±0.008	0.17	0.079	0.063	0.063
Size	G	H	I	J	K	
mm	1.0	1.10±0.1	2.2	1.05±0.1	2.0	
inches	0.039	0.043±0.004	0.087	0.041±0.004	0.079	

CHARACTERISTICS

- Description:** SMD (shielded) Power Inductors
- Applications:** Smart phones, Notebook PC's, Tablets, HDD's, Servers, VRM's, Compact power supply modules, etc.
- Saturation Rated Current (Isat):** The DC current when the when the inductance becomes 30% lower than its initial value. (Ta=25°C)
- Temperature Rise Current (Irms):** The actual current when temperature of coil becomes ΔT40°C. (Ta=25°C)
- Operating Temperature Range:** -55°C to 155°C
- Markings:** Inductance Code
- Miscellaneous:** RoHS compliant
- Samples available. See website for ordering information.**



PAD LAYOUT

