

4

3

2

1


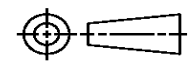
THIS DRAWING IS UNPUBLISHED. RELEASED FOR PUBLICATION  
 © COPYRIGHT ALL RIGHTS RESERVED.

LOC	DIST	REVISIONS			
P	LTR	DESCRIPTION	DATE	DWN	APVD
	A1	ECR-16-011296	03OCT2016	GK	SD

# REPLACED BY OCEAN STYLE APPLICATOR PART NUMBER 2150695-2

FOR REPLACEMENT PARTS FOR APPLICATOR 1339577 REFER TO ADDITIONAL PAGE(S). SPARE PARTS KIT (IF LISTED) WILL REMAIN AVAILABLE.

THE REPLACEMENT OCEAN STYLE APPLICATOR HAS THE SAME TERMINATOR/PRESS INTERFACE AS APPLICATOR 1339577

THIS DRAWING IS A CONTROLLED DOCUMENT.		DWN	GOPALAKRISHNA HV		 TE Connectivity
DIMENSIONS:		CHK	GOPALAKRISHNA HV		
		TOLERANCES UNLESS OTHERWISE SPECIFIED:		NAME	
0 PLC ± 1 PLC ± 2 PLC ± 3 PLC ± 4 PLC ± ANGLES ±		APVD		END FEED HD-I APPLICATOR	
MATERIAL		FINISH		PRODUCT SPEC	
				APPLICATION SPEC	
				SIZE	RESTRICTED TO
				A3	
				CAGE CODE	DRAWING NO
					©- 1339577
				WEIGHT	
				CUSTOMER DRAWING	SCALE
					SHEET 1 OF 2
					REV A1

DRAWING MADE IN THIRD ANGLE PROJECTION

1339577 1339577

/home/eb003420/ednmod

PART NUMBER	REV	FIRST USED	TERMINATOR	FEED TYPE	DESCRIPTION
1339577-1	A	-	BENCH & LEADMAKER	MECH POST FEED	HD-I APPLICATOR
7-1339577-1	A	-	BENCH & LEADMAKER	MECH POST FEED	-1 AND SPARE PARTS
7-1339577-7	A	-	-	-	SPARE PARTS KIT

**CRIMP DATA** AMP TERMINAL AMP CRIMP SPECS

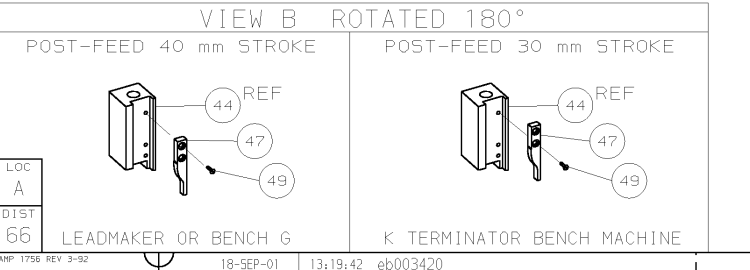
TERMINAL NAME: .250 LIF POS-LOK REC. MK11			
CRIMP	SIZE	TYPE	RANGE
WIRE	2.79 [.110 IN]	F	1.50-2.50mm <sup>2</sup>
INSUL	3.56 [.140 IN]	F	2.10-3.10 [.083-.122 IN]
WIRE STRIP LENGTH 4.60-5.40 [.181-.213 IN]		APPL INSTRUCTION 408-8323	
TERMINAL APPL SPEC	114-19023	FEED	23.90 [.941 IN]

**TERMINALS APPLIED**

216330	-	-	-	-	-
-	-	-	-	-	-
-	-	-	-	-	-
-	-	-	-	-	-
-	-	-	-	-	-
-	-	-	-	-	-
-	-	-	-	-	-
-	-	-	-	-	-
-	-	-	-	-	-
-	-	-	-	-	-

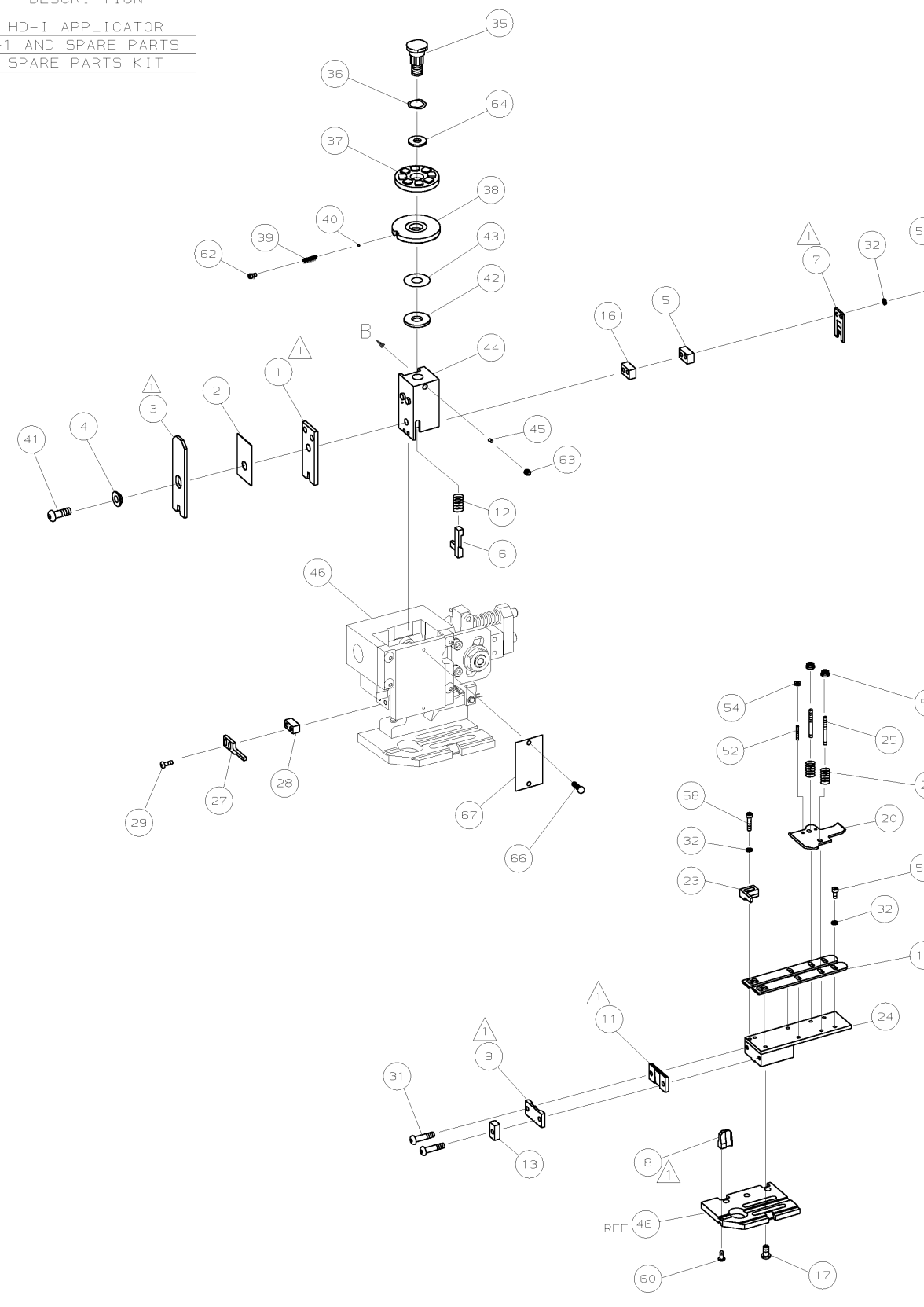
WIRE SIZE mm <sup>2</sup> AWG	CRIMP HEIGHT	PIN PN AND LENGTH [IN]
2.50mm <sup>2</sup>	2.04 ±0.05 [.080 ±.002 IN]	6-354778-7 [.2830]
2.00mm <sup>2</sup>	1.90 ±0.05 [.075 ±.002 IN]	7-354778-7 [.2880]
1.50mm <sup>2</sup>	1.76 ±0.05 [.069 ±.002 IN]	8-354778-9 [.2940]
-	-	-
-	-	-
-	-	-
-	-	-
-	-	-
-	-	-
-	-	-
-	-	-
-	-	-
-	-	-
-	-	-
-	-	-
-	-	-
-	-	-
-	-	-

- 1. RECOMMENDED SPARE PARTS.
- 2. GREASE RAM, CAM, CAM FOLLOWER AND FEED ROD LIGHTLY.
- 3. LUBRICATE DAILY PER THE APPLICATOR INSTRUCTION SHEET SUPPLIED WITH THE APPLICATOR.



LOC 66 LEADMAKER OR BENCH G DIST 66 K TERMINATOR BENCH MACHINE

AMP 1756 REV 3-92 18-SEP-01 13:19:42 eb003420



QTY	REV	PART NO	DESCRIPTION	ITEM NO	
-	1	1	1339577	PRINT, APPLICATOR LOG SHEET	73
-	1	1	1338705-2	DOCUMENTATION PACKAGE	72
-	-	-	-	-	71
-	-	-	-	-	70
-	-	-	-	-	69
-	-	-	-	-	68
-	1	1	461264-1	PLATE, IDENTIFICATION	67
-	2	2	21017-2	SCR,DRIVE (#2X.19) ID PLATE	66
-	-	-	-	-	65
-	1	1	986950-1	WASHER, FLAT PRECISION	64
-	1	1	3-18031-0	SCR,SKT SET (M6X6) RAM	63
-	1	1	18023-9	SCR,SKT CAP (M4X6) CP DSC	62
-	-	-	-	-	61
-	1	1	18024-7	SCR,BHC (M4X10) ANVIL	60
-	-	-	-	-	59
-	2	2	1-18023-3	SCR,SHC (M4X16) HOLD DOWN	58
-	5	5	1-18023-0	SCR,SHC (M4X8) STRIP GUIDE	57
-	2	2	1-18023-3	SCR,SHC (M4X16) SLUG BLADE	56
-	-	-	-	-	55
-	2	2	18029-1	NUT,HEX (M3) DRAG	54
-	2	2	986965-1	NUT,HEX SL (M4) DRAG STUD	53
-	2	2	2-18032-2	SCR,SKT SET (M3X10) DRAG	52
-	-	-	-	-	51
-	-	-	-	-	50
-	1	1	18024-3	SCR,BHC (M3X10) CAM	49
-	-	-	-	-	48
-	1	1	1338676-1	CAM, POST-FEED 30 & 40 mm ST	47
-	1	1	1338662-1	APPLICATOR, BASIC (SUBASSY)	46
-	1	1	690191-1	PLUG, NYLON	45
-	1	1	1320998-1	RAM	44
-	1	1	690125-1	WASHER, LAMINATED	43
-	1	1	690124-1	WASHER, RAM	42
-	1	1	2-18024-6	SCREW,BHC (M8X25) CRIMPER	41
-	1	1	23241-1	BALL, STEEL	40
-	1	1	2-22278-7	SPRING, COMPRESSION	39
-	1	1	1320922-1	DISC, INSULATION	38
-	1	1	354777-1	WIRE DISC, PLASTIC	37
-	1	1	22480-5	WASHER, SPRING	36
-	1	1	690212-1	POST, RAM	35
-	-	-	-	-	34
-	-	-	-	-	33
-	9	9	18025-2	WASHER, LOCK (M4) SHEAR BL	32
-	2	2	4-18024-7	SCR,BHC (M4X25) SHEAR PL	31
-	-	-	-	-	30
-	2	2	18024-8	SCR,BHC (M4X12) STRIPPER	29
-	1	1	3-690451-2	SPACER, STRIPPER	28
-	1	1	240639-1	STRIPPER	27
-	-	-	-	-	26
-	2	2	1320906-1	DRAG, STUD	25
-	1	1	1320995-1	STRIP GUIDE	24
-	1	1	240825-1	PLATE, STRIP HOLD DOWN	23
-	2	2	4-22281-1	SPRING, DRAG	22
-	-	-	-	-	21
-	1	1	1338665-1	DRAG, STOCK	20
-	-	-	-	-	19
-	2	2	1338663-6	GUIDE, LOWER STRIP	18
-	4	4	1-18024-8	SCR,BHC (M6X12) STRIP GD PL	17
-	1	1	1338708-1	SPACER, SLUG BLADE	16
-	-	-	-	-	15
-	-	-	-	-	14
-	1	1	1-690481-0	SPACER, HOLD DOWN	13
-	1	1	23846-1	SPRING, HOLD DOWN	12
-	1	1	240833-1	PLATE, REAR SHEAR	11
-	-	-	-	-	10
-	1	1	690482-3	PLATE, FRONT SHEAR	9
-	1	2	1-1333219-6	ANVIL	8
-	1	1	690474-3	BLADE, SLUG	7
-	1	1	1-455892-4	HOLD DOWN, TERMINAL	6
-	1	1	2-240641-7	SPACER, SLUG BLADE	5
-	1	1	238009-1	SPACER, BLOCK CRIMPER	4
-	1	2	1-456134-4	CRIMPER, INSULATION	3
-	1	1	455888-8	SPACER, CRIMPER	2
-	1	2	2-456408-0	CRIMPER, WIRE	1

QTY REQD PER ASSY		REVISION OF EACH ASSY NO (WHEN BLANK, USE DWG REVISION)	
PARTS LIST		MATERIAL	
DR	M. CLIFFORD	APP	OBAUG01
CHK	-	REL	18-09-01
NAME		MACHINE REF	
END FEED HD-I APPLICATOR		HD-I APPL	
SCALE		SHEET	
D		1 of 1	
DWG NO		REV	
1339577		A	

00779 CUSTOMER AND ASSEMBLY DRAWING RESTRICTED TO

THIS DRAWING IS A CONTROLLED DOCUMENT.  
 THIS DRAWING IS UNPUBLISHED.  
 RELEASED FOR PUBLICATION BY AMP INCORPORATED. ALL RIGHTS RESERVED. COPYRIGHT 2001. AMP 1756 REV 3-92 18-SEP-01 13:19:42 eb003420