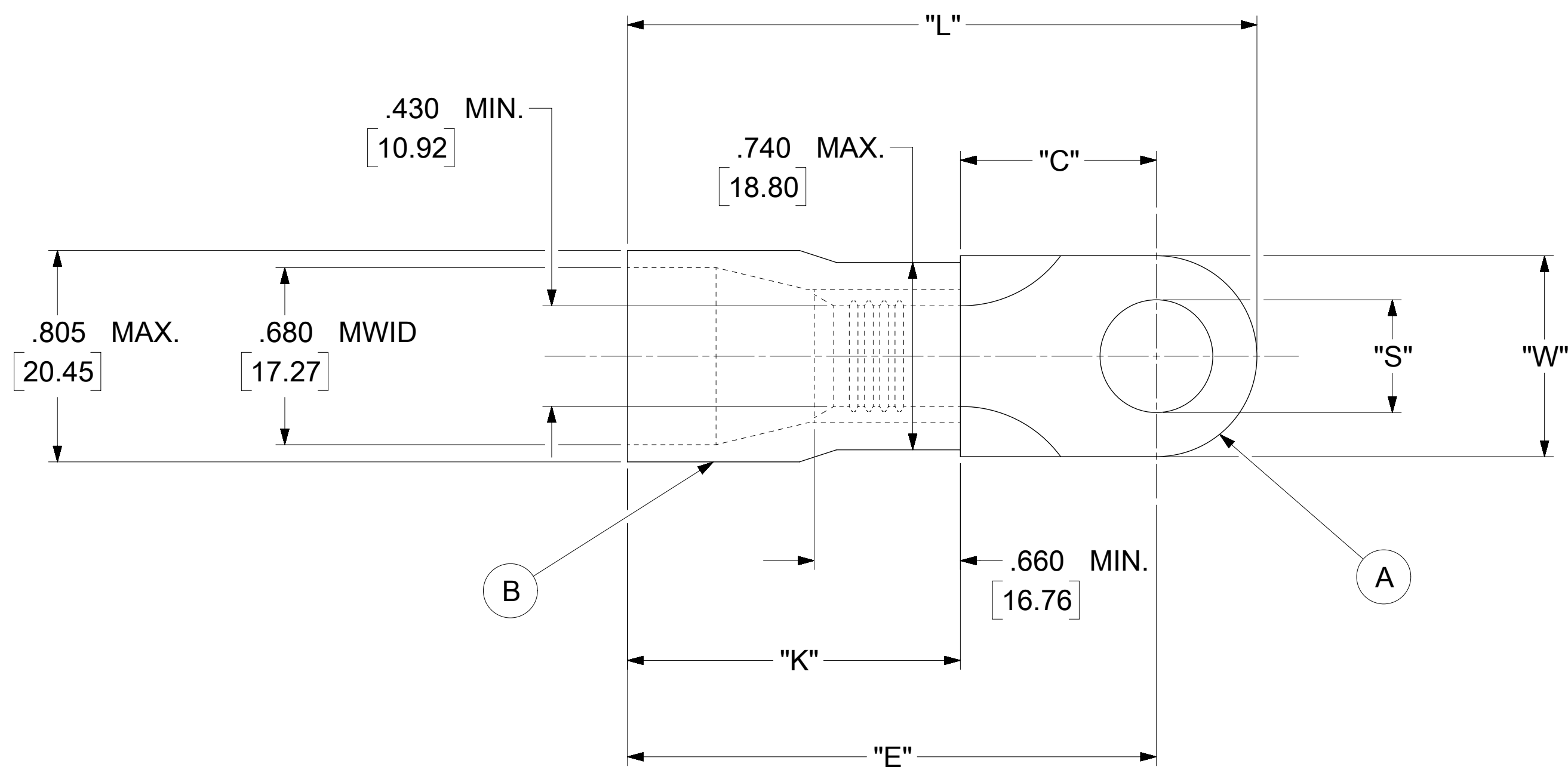


LOOSE PIECE		SPECIFICATIONS						
MATERIAL NUMBER	ENGINEERING NUMBER	STUD SIZE	"S" ±.005 [0.13]	"W"	"C" MIN.	"E" MAX.	"K" MAX.	"L" MAX.
190710302	H-680-76X	76	.453 [11.51]	.882±.012 [22.40±0.30]	.740 [18.80]	2.235 [56.77]	1.355 [34.42]	2.620 [66.55]
190710303	H-681-14X	14	.265 [6.73]	.820±.013 [20.83±0.33]	.740 [18.80]	2.235 [56.77]	1.455 [36.96]	2.620 [66.55]
190710305	H-681-38X	38	.390 [9.91]					
190710306	H-681-56X	56	.328 [8.33]					



NOTES:

- MATERIAL:
  - (A). TERMINAL: COPPER (STOCK TKN .075[1.90])  
PLATING: ELECTRO-TIN (.0003 MIN.)
  - (B). INSULATION: MOLDED PVC (BLUE)
- MWID: MAXIMUM WIRE INSULATION DIAMETER
- WIRE SIZE: 1/0 AWG  
52.95 MM<sup>2</sup>
- "UL" LISTING #E32244  
"CSA" LISTING #18689
- ALL DIMENSIONS IN INCHES/[MM].
- PARTS ARE ROHS COMPLIANT.
- DIMS. SHOWN ARE FOR REFERENCE ONLY.

SYMBOLS	THIS DRAWING CONTAINS INFORMATION THAT IS PROPRIETARY TO MOLEX ELECTRONIC TECHNOLOGIES, LLC AND SHOULD NOT BE USED WITHOUT WRITTEN PERMISSION										
	DIMENSION UNITS		SCALE		CURRENT REV DESC: MIGRATION TO ECTR/NX						
	INCH/MM		NTS		EC NO: 620820 DRWN: ABENJAMINLW 2019/07/10 CHK'D: GROJAS01 2019/07/17 APPR: JMACNEIL 2019/08/06 INITIAL REVISION: DRWN: JTK 1970/01/21 APPR: JMACNEIL 2019/08/06						
GENERAL TOLERANCES (UNLESS SPECIFIED)				DOCUMENT NUMBER		DOC TYPE		DOC PART		REVISION	
				190710302		PSD		000		A	
DRAFT WHERE APPLICABLE MUST REMAIN WITHIN DIMENSIONS		THIRD ANGLE PROJECTION		DRAWING		SERIES		MATERIAL NUMBER		CUSTOMER	
				D-SIZE		19071		SEE TABLE		GENERAL MARKET	
										SHEET NUMBER	
										1 OF 1	