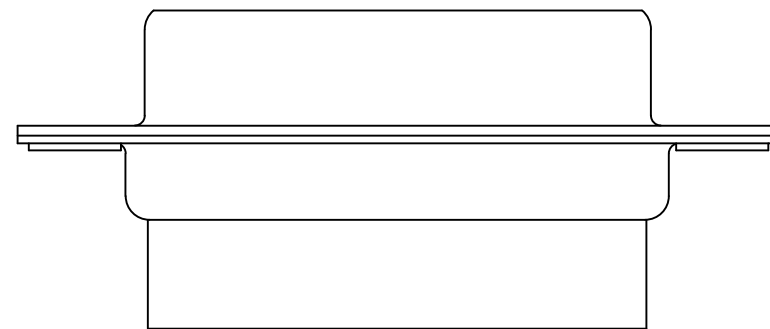
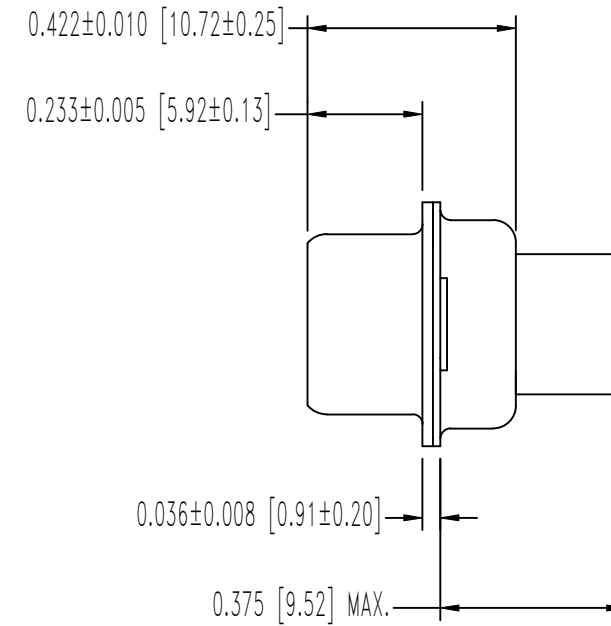
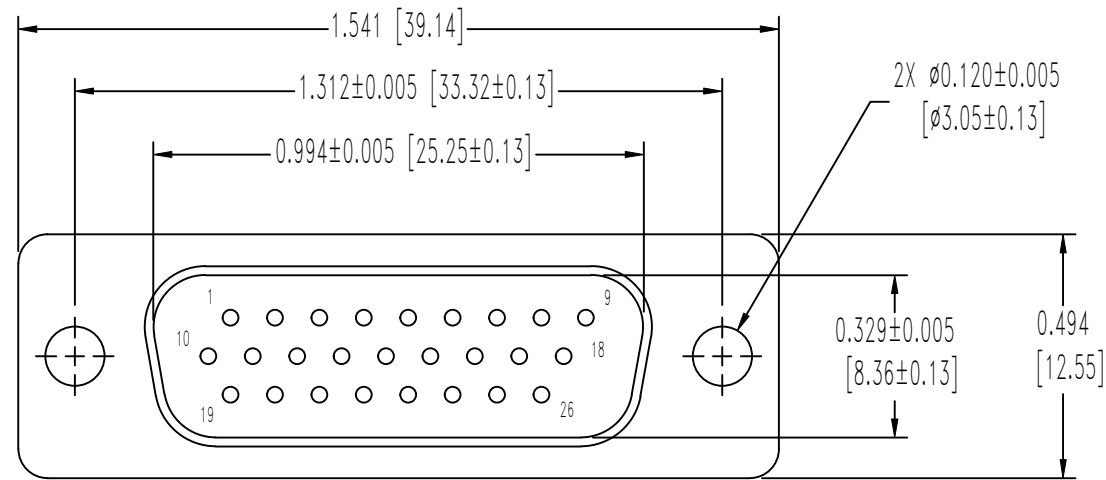


THIS DRAWING CONTAINS INFORMATION PROPRIETARY TO POSITRONIC AND ITS SUBSIDIARIES. POSITRONIC BELIEVES THE DATA ON THIS DRAWING TO BE RELIABLE. SINCE THE TECHNICAL INFORMATION IS GIVEN FREE OF CHARGE, THE USER EMPLOYS SUCH INFORMATION AT HIS OWN DISCRETION AND RISK. POSITRONIC ASSUMES NO RESPONSIBILITY FOR RESULTS OBTAINED OR DAMAGES INCURRED FROM USE OF SUCH INFORMATION IN WHOLE OR IN PART.

DATE	REV	REVISION RECORD	APP	DR	CK
02-10-15	NC	ECO 45794	COLE	CV	COLE



NOTES:

- MATERIALS AND FINISHES:  
INSULATOR: GLASS FILLED POLYESTER PER ASTM-D5927; UL 94V-0, ASTM E-595, NASA-RP-1124, COLOR: BLUE.  
SHELLS: BRASS, 0.000050 [1.27μ] GOLD OVER COPPER PLATE.
- DETAILED PRODUCT, MECHANICAL, AND ELECTRICAL INFORMATION IS AVAILABLE IN THE LATEST SPACE-D PRODUCT PUBLICATION. VISIT [CONNECTPOSITRONIC.COM/PRODUCTS/62/HIGHPERFORMANCED-SUBMINIATURE](http://CONNECTPOSITRONIC.COM/PRODUCTS/62/HIGHPERFORMANCED-SUBMINIATURE) OR [CONNECTPOSITRONIC.COM](http://CONNECTPOSITRONIC.COM).
- CONNECTORS ARE COMPLIANT TO THE CURRENT ROHS DIRECTIVE.
- DIMENSIONS ARE IN INCHES [MILLIMETERS].

	<b>POSITRONIC INDUSTRIES INC.</b> www.connectpositronic.com		FSCM 28198
	SCALE N.T.S.	DRAWN BY C. Vasquez	
DECIMAL TOL. ± 0.015 [0.38]	TITLE SDD SERIES		
SDD26M0000G/AA			
ANGULAR TOL. ± 5°	DATE 02-10-15	DRAWING NUMBER SK17018	REV. NC