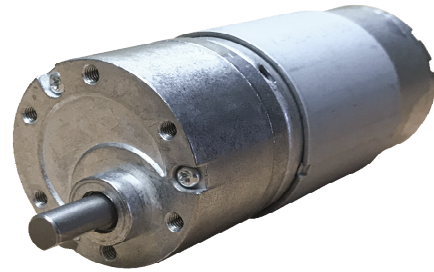




Our Spur Gear Motors are an inline solution providing ample torque output at various speeds. They are best for intermittent duty operation. With endless performance combinations, we have a fully tailored gear motor solution for you.

Contact Us for alternative solutions!



Specifications			
<b>Gearhead Type:</b>	Spur - Offset Shaft	<b>No-Load Speed:</b>	85 rpm (+/- 10%)
<b>Motor Type:</b>	Carbon - Brushed	<b>No-Load Current:</b>	< 0.35 A
<b>Rated Voltage:</b>	12V DC	<b>Stall Torque:</b>	108 kg.cm
<b>Rated Speed:</b>	76 rpm	<b>Stall Current:</b>	11.8 A
<b>Rated Torque:</b>	11 kg.cm	<b>Max. Power:</b>	23 W
<b>Rated Current:</b>	1.5 A	<b>Termination Style:</b>	Terminals

